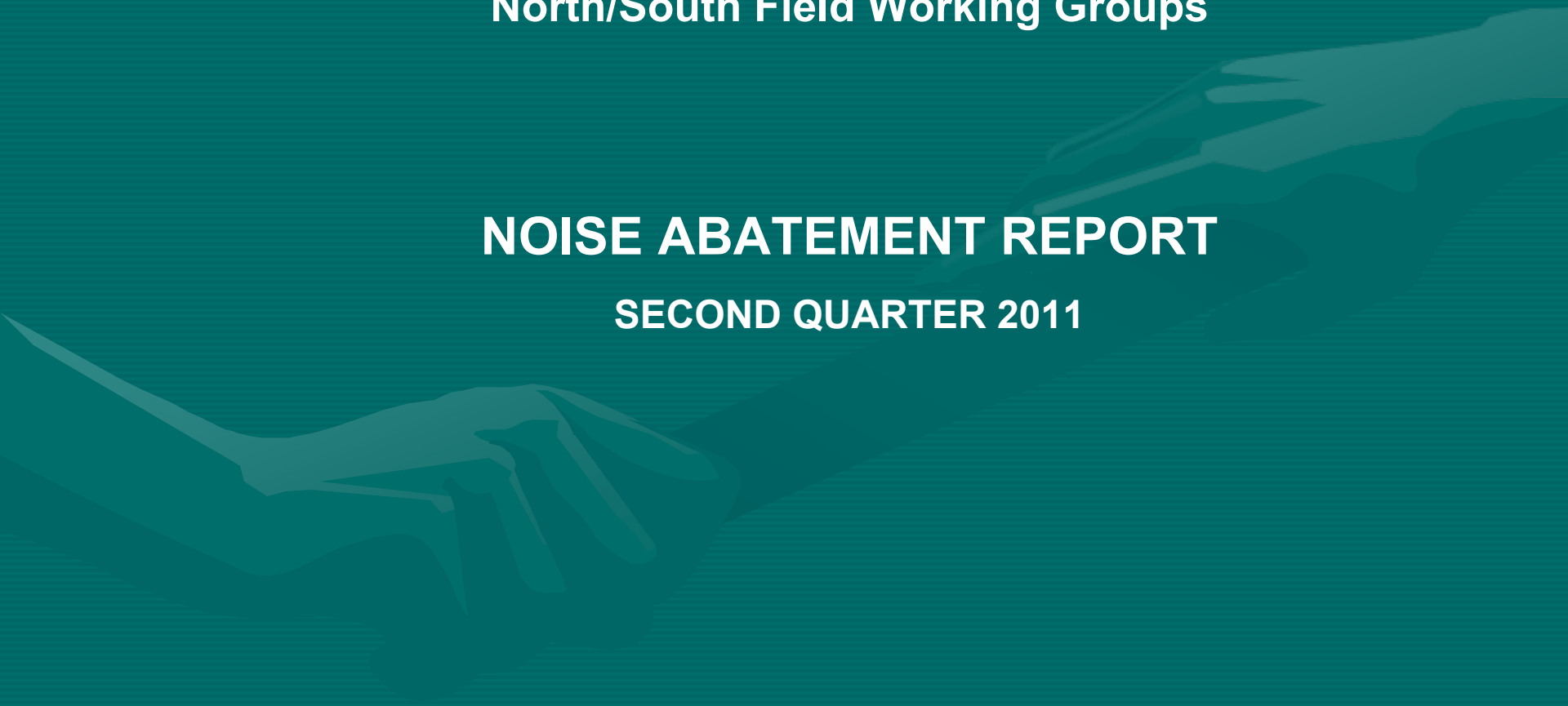


NOISE FORUM SUMMARY

North/South Field Working Groups

NOISE ABATEMENT REPORT

SECOND QUARTER 2011



Operation Details
Beacon Code: 3271
AC Type: GLF3
Operation Type: Departure
Runway: 27R
Target Details
Date/Time: 4/2/2009 09:58:59

Runway 27L/R Jet Departure NAP

2011Q2
96% Compliance
(2,070 departures)

2010Q2
97% Compliance
(2,019 departures)

© 2004 GDT, Inc. and its licensors, Rel. 07/2004
© 2007 AirPhoto USA, Rel. nov 2005

Heading: 325
Elevation: 15

Arrivals
Departures
Overflights



Operation Details
Beacon Code: 1002
AC Type: BE40
Operation Type: Arrival
Runway: 09R
Target Details
Date/Time: 4/7/2009 12:09:00

Runway 09L/R Jet Landing NAP

2011Q2
69% Compliance
(81 landings)

2010Q2
75% Compliance
(186 landings)

© 2004 GDT, Inc. and its licensors, Rel. 07/2004
© 2007 AirPhoto USA, Rel. nov 2005

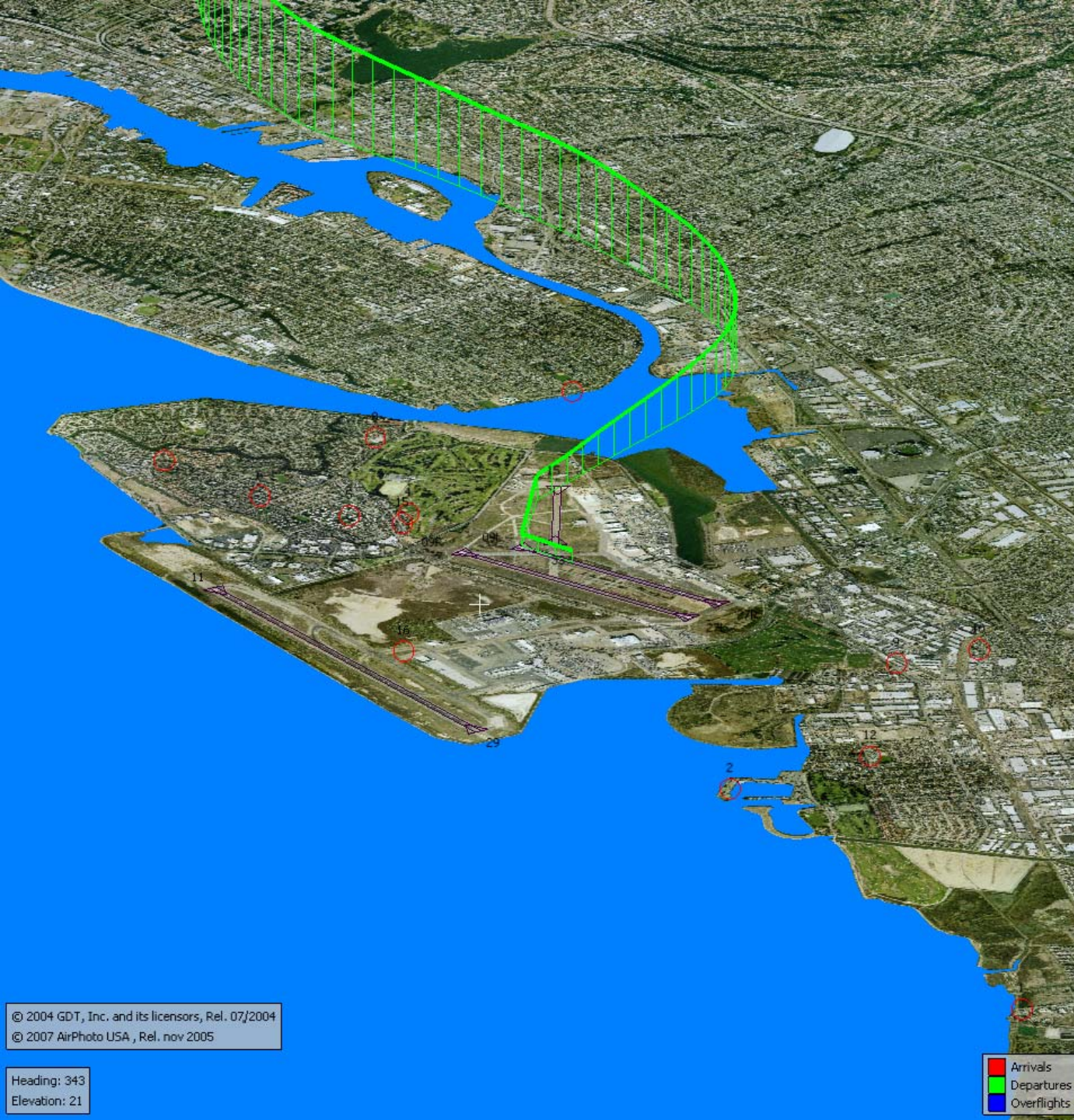
Heading: 325
Elevation: 15

Arrivals
Departures
Overflights

VFR Aircraft Departure NAP

2011Q2
98% Compliance
(1,278 departures)

2010Q2
98% Compliance
(2,132 departures)



© 2004 GDT, Inc. and its licensors, Rel. 07/2004
© 2007 AirPhoto USA, Rel. nov 2005

Heading: 343
Elevation: 21

Arrivals
Departures
Overflights

North Field Quiet Hours NAP

2011Q2
96% Compliance
(536 departures)

2010Q2
98% Compliance
(788 departures)

© 2004 GDT, Inc. and its licensors, Rel. 07/2004
© 2007 AirPhoto USA, Rel. nov 2005

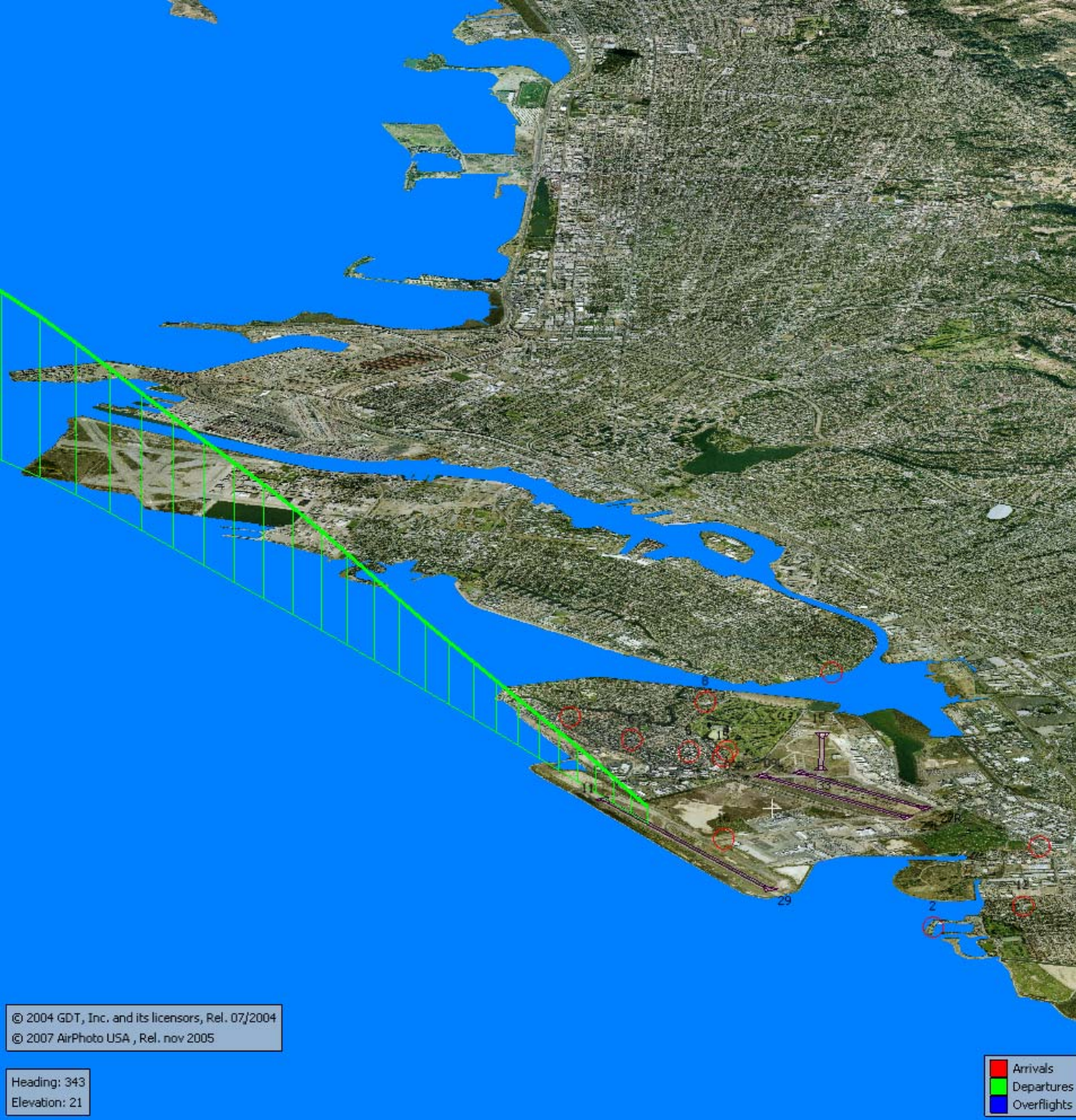
Heading: 343
Elevation: 21



Runway 29 Bay Farm Right Turn NAP

2011Q2
100% Compliance
(14,781 departures)

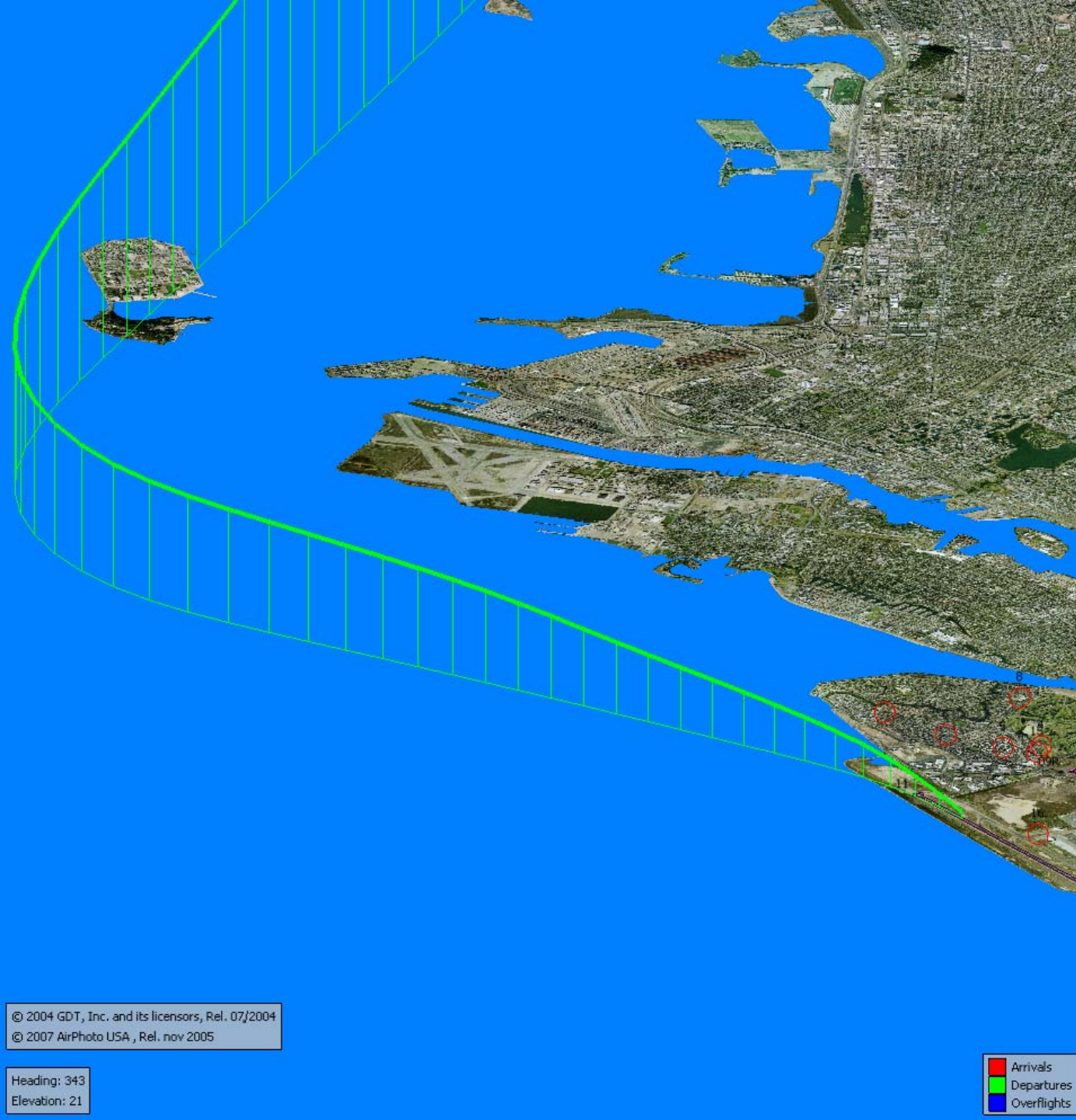
2010Q2
100% Compliance
(13,467 departures)



Silent7 Night Departure NAP

2011Q2
99% Compliance
(2,922 departures)

2010Q2
98% Compliance
(2,113 departures)



© 2004 GDT, Inc. and its licensors, Rel. 07/2004
© 2007 AirPhoto USA, Rel. nov 2005

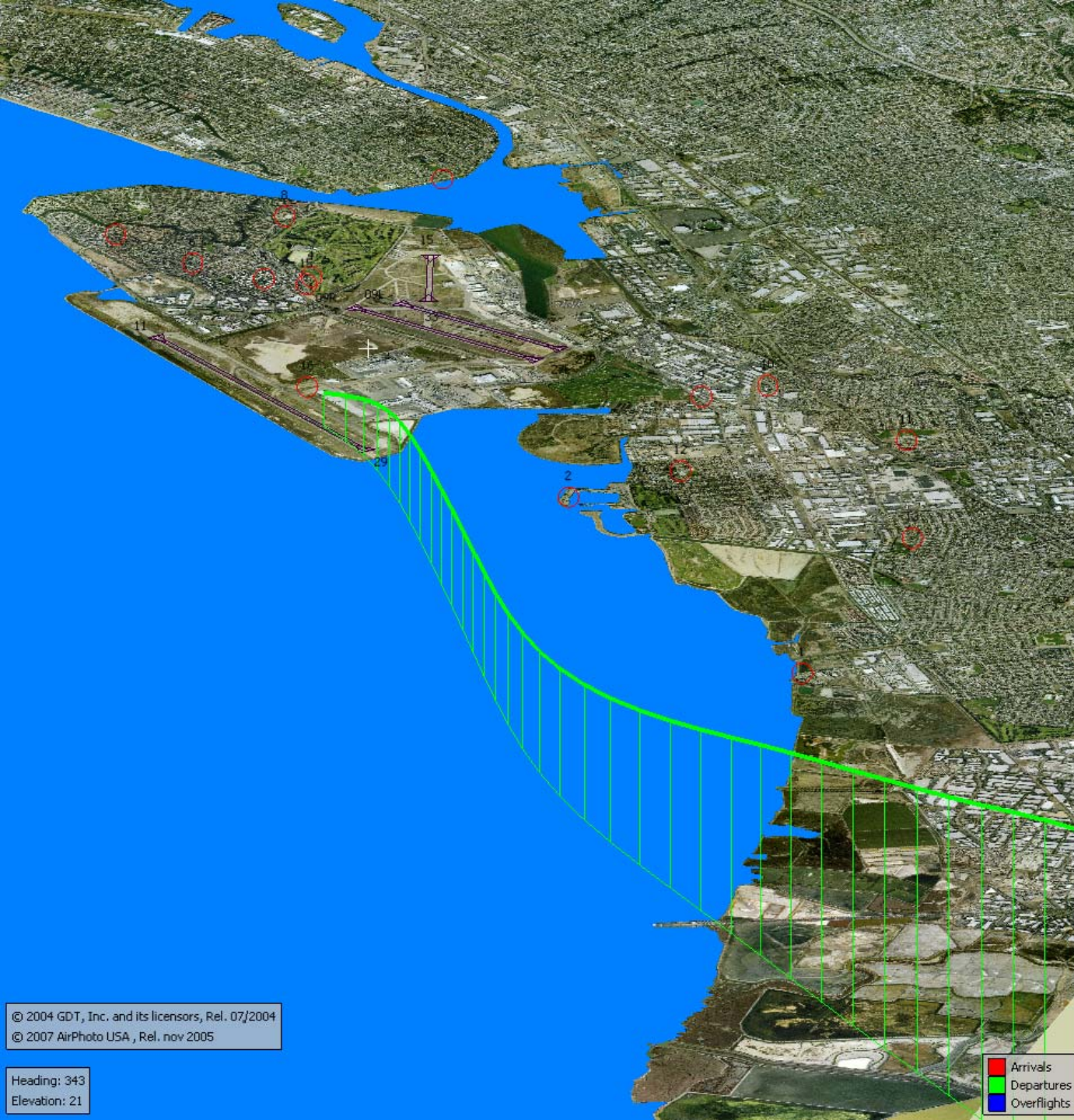
Heading: 343
Elevation: 21

Arrivals
Departures
Overflights

Runway 11 Night Departure NAP

2011Q2
92% Compliance
(48 departures)

2010Q2
100% Compliance
(53 departures)



© 2004 GDT, Inc. and its licensors, Rel. 07/2004
© 2007 AirPhoto USA, Rel. nov 2005

Heading: 343
Elevation: 21

Arrivals
Departures
Overflights

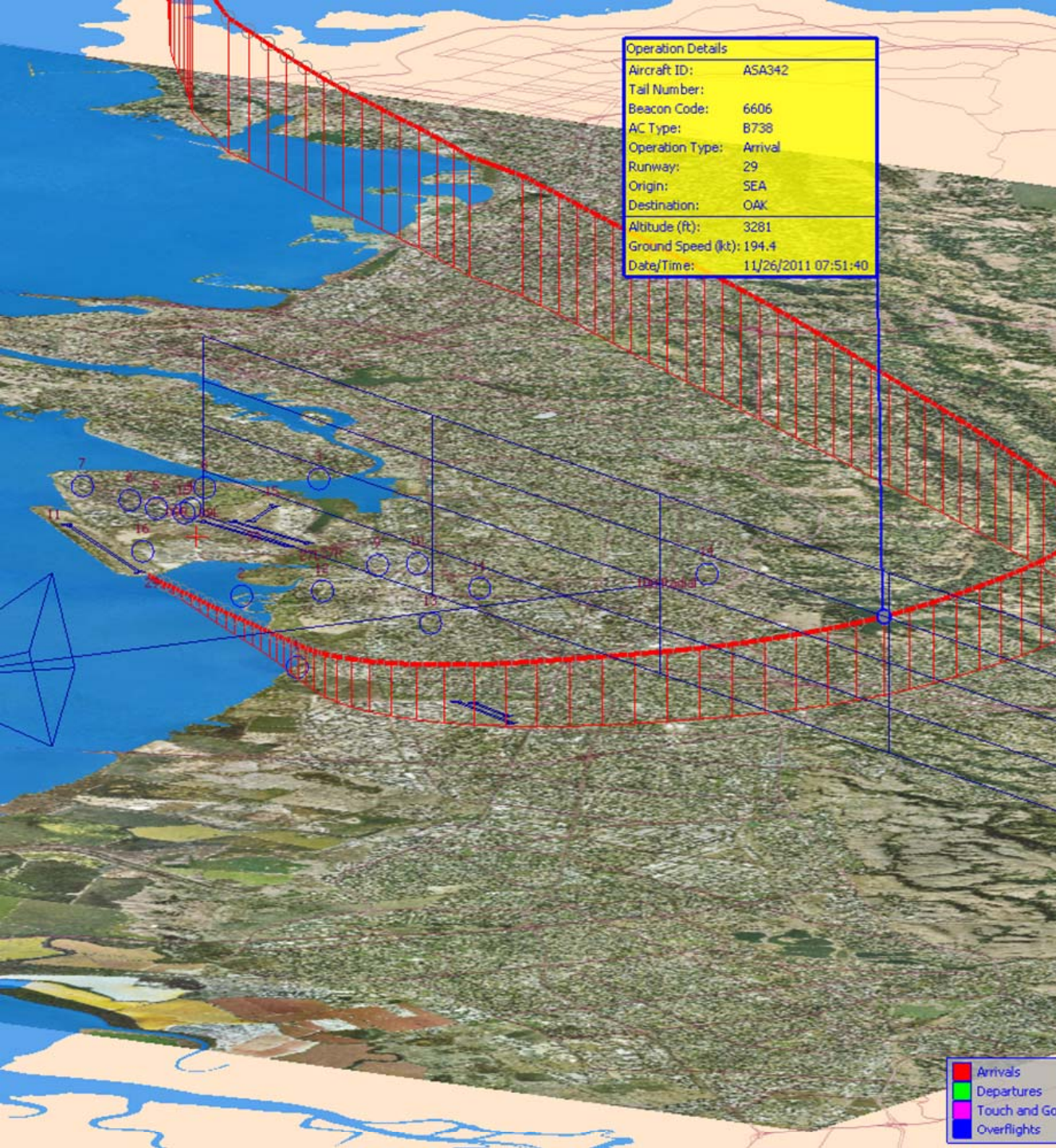
Operation Details	
Aircraft ID:	SWA771
Tail Number:	
Beacon Code:	1156
AC Type:	B737
Operation Type:	Departure
Runway:	29
Origin:	OAK
Destination:	BOI
Altitude (ft):	4833
Ground Speed (kt):	231.3
Date/Time:	11/28/2011 10:37:46

Runway 29 East Turn NAP

2011Q2
98% Compliance
(4,112 departures)

2010Q2
97% Compliance
(4,200 departures)

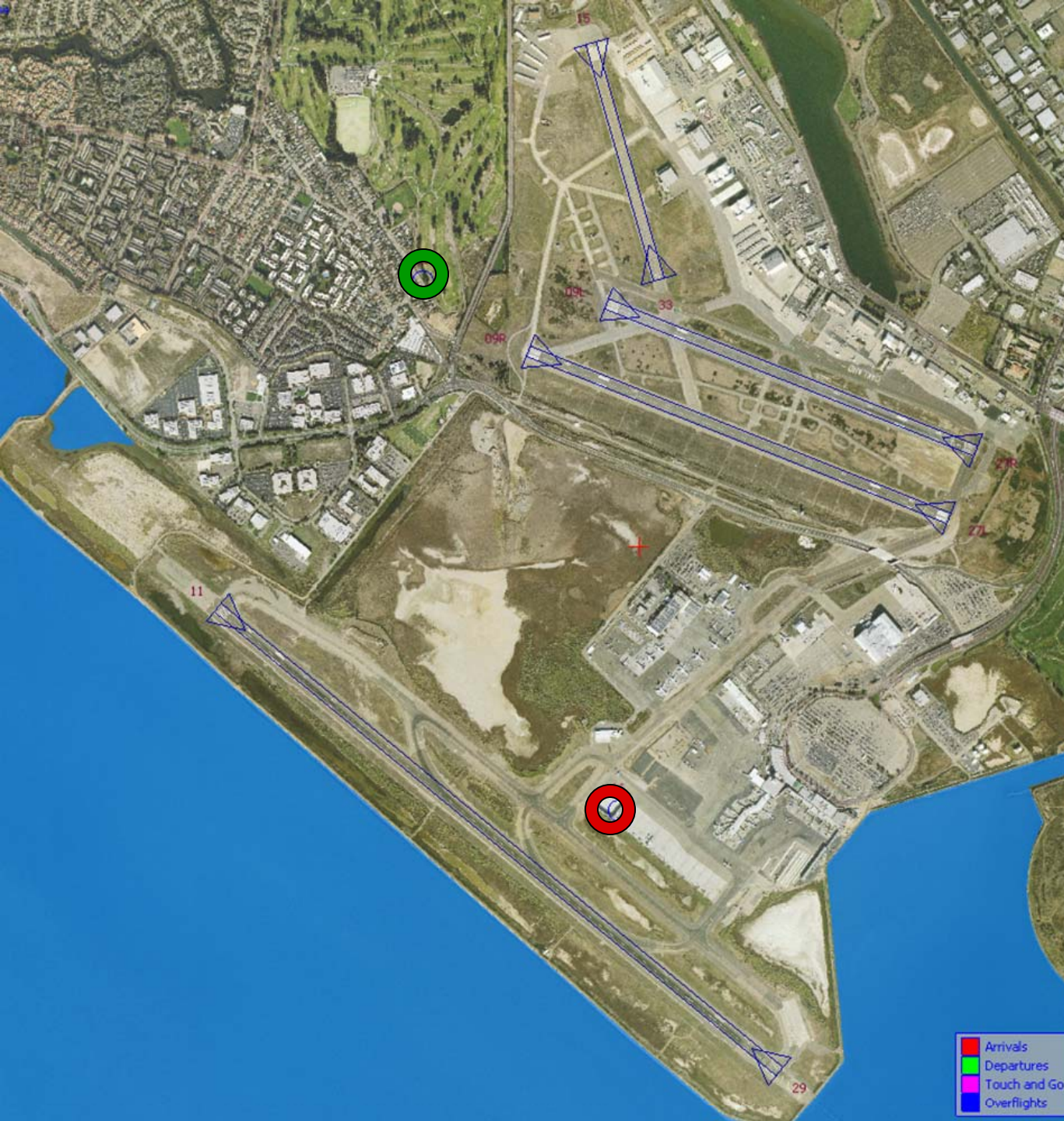




**100 Degree Radial
At 3,000 ft. NAP**

**2011Q2
87% Compliance
(2,431 landings)**

**2010Q2
91% Compliance
(2,890 landings)**



Engine Run-up NAP

2011Q2
100% Compliance
(24 engine runups)

2010Q2
100% Compliance
(77 engine runups)

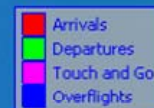


Table 1. North Field Night Aircraft Departure SEL Noise Measurements
Total Aircraft Departures = 536

Second Quarter 2011 (10:00 p.m. to 6:00 a.m.)

NMT Number	Aircraft Noise Events Below SEL 80 dBA	Aircraft Noise Events SEL 80 - 84.9 dBA			Aircraft Noise Events SEL 85 - 89.9 dBA			Aircraft Noise Events SEL ≥ 90 dBA			Total Aircraft Noise Events
		Amount	Nightly Average	As Percentage of Departures	Amount	Nightly Average	As Percentage of Departures	Amount	Nightly Average	As Percentage of Departures	
1	7	0	0.0	0.0%	0	0.0	0.0%	0	0.0	0.0%	7
2	119	10	0.1	1.8%	0	0.0	0.0%	1	0.0	0.2%	130
3	1	0	0.0	0.0%	0	0.0	0.0%	0	0.0	0.0%	1
4	139	67	0.7	11.8%	33	0.4	5.8%	13	0.1	2.3%	252
5	80	17	0.2	3.0%	3	0.0	0.5%	8	0.1	1.4%	108
6	53	8	0.1	1.4%	3	0.0	0.5%	7	0.1	1.2%	71
7	11	7	0.1	1.2%	6	0.1	1.1%	0	0.0	0.0%	24
8	36	36	0.4	6.3%	7	0.1	1.2%	0	0.0	0.0%	79
9	66	19	0.2	3.4%	11	0.1	1.9%	8	0.1	1.4%	104
10	28	11	0.1	1.9%	6	0.1	1.1%	1	0.0	0.2%	46
11	9	8	0.1	1.4%	3	0.0	0.5%	1	0.0	0.2%	21
12	74	9	0.1	1.6%	2	0.0	0.4%	1	0.0	0.2%	86
13	2	3	0.0	0.5%	0	0.0	0.0%	0	0.0	0.0%	5
14	39	1	0.0	0.2%	0	0.0	0.0%	0	0.0	0.0%	40
All NMTs	664	196	2	35%	74	1	13%	40	0	7%	974

Table 2. Aircraft SEL Noise Measurements in Alameda - Total Aircraft Departures = 326

Second Quarter 2011 (10:00 p.m. to 6:00 a.m.)											
NMT Number	Aircraft Noise Events Below SEL 80 dBA	Aircraft Noise Events SEL 80 - 84.9 dBA			Aircraft Noise Events SEL 85 - 89.9 dBA			Aircraft Noise Events SEL ≥ 90 dBA			Total Aircraft Noise Events
		Amount	Nightly Average	As Percentage of Departures	Amount	Nightly Average	As Percentage of Departures	Amount	Nightly Average	As Percentage of Departures	
3	1	0	0.0	0.0%	0	0.0	0.0%	0	0.0	0.0%	1
4	139	67	0.7	28.0%	33	0.4	13.8%	13	0.1	5.4%	252
5	80	17	0.2	7.1%	3	0.0	1.3%	8	0.1	3.3%	108
6	53	8	0.1	3.3%	3	0.0	1.3%	7	0.1	2.9%	71
7	11	7	0.1	2.9%	6	0.1	2.5%	0	0.0	0.0%	24
8	36	36	0.4	15.1%	7	0.1	2.9%	0	0.0	0.0%	79
Total	320	135	1.5		52	0.6		28	0.3		535

Table 3. Aircraft SEL Noise Measurements in San Leandro - Total Aircraft Departures = 210

Second Quarter 2011 (10:00 p.m. to 6:00 a.m.)											
NMT Number	Aircraft Noise Events Below SEL 80 dBA	Aircraft Noise Events SEL 80 - 84.9 dBA			Aircraft Noise Events SEL 85 - 89.9 dBA			Aircraft Noise Events SEL ≥ 90 dBA			Total Aircraft Noise Events
		Amount	Nightly Average	As Percentage of Departures	Amount	Nightly Average	As Percentage of Departures	Amount	Nightly Average	As Percentage of Departures	
2	119	10	0.1	3.0%	0	0.0	0.0%	1	0.0	0.3%	130
9	66	19	0.2	5.8%	11	0.1	3.4%	8	0.1	2.4%	104
10	28	11	0.1	3.4%	6	0.1	1.8%	1	0.0	0.3%	46
11	9	8	0.1	2.4%	3	0.0	0.9%	1	0.0	0.3%	21
12	74	9	0.1	2.7%	2	0.0	0.6%	1	0.0	0.3%	86
13	2	3	0.0	0.9%	0	0.0	0.0%	0	0.0	0.0%	5
14	39	1	0.0	0.3%	0	0.0	0.0%	0	0.0	0.0%	40
Total	337	61	0.7		22	0.2		12	0.1		432