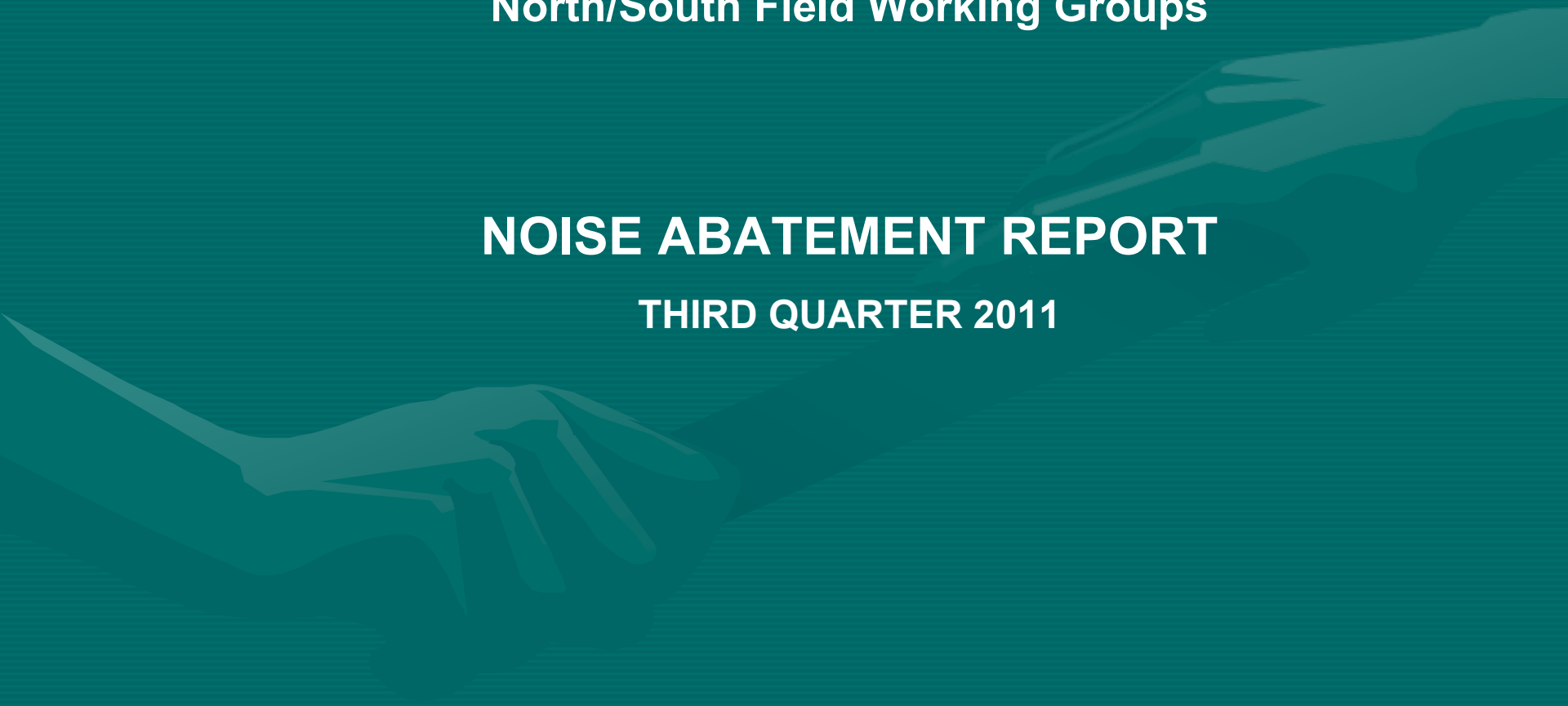


NOISE FORUM SUMMARY

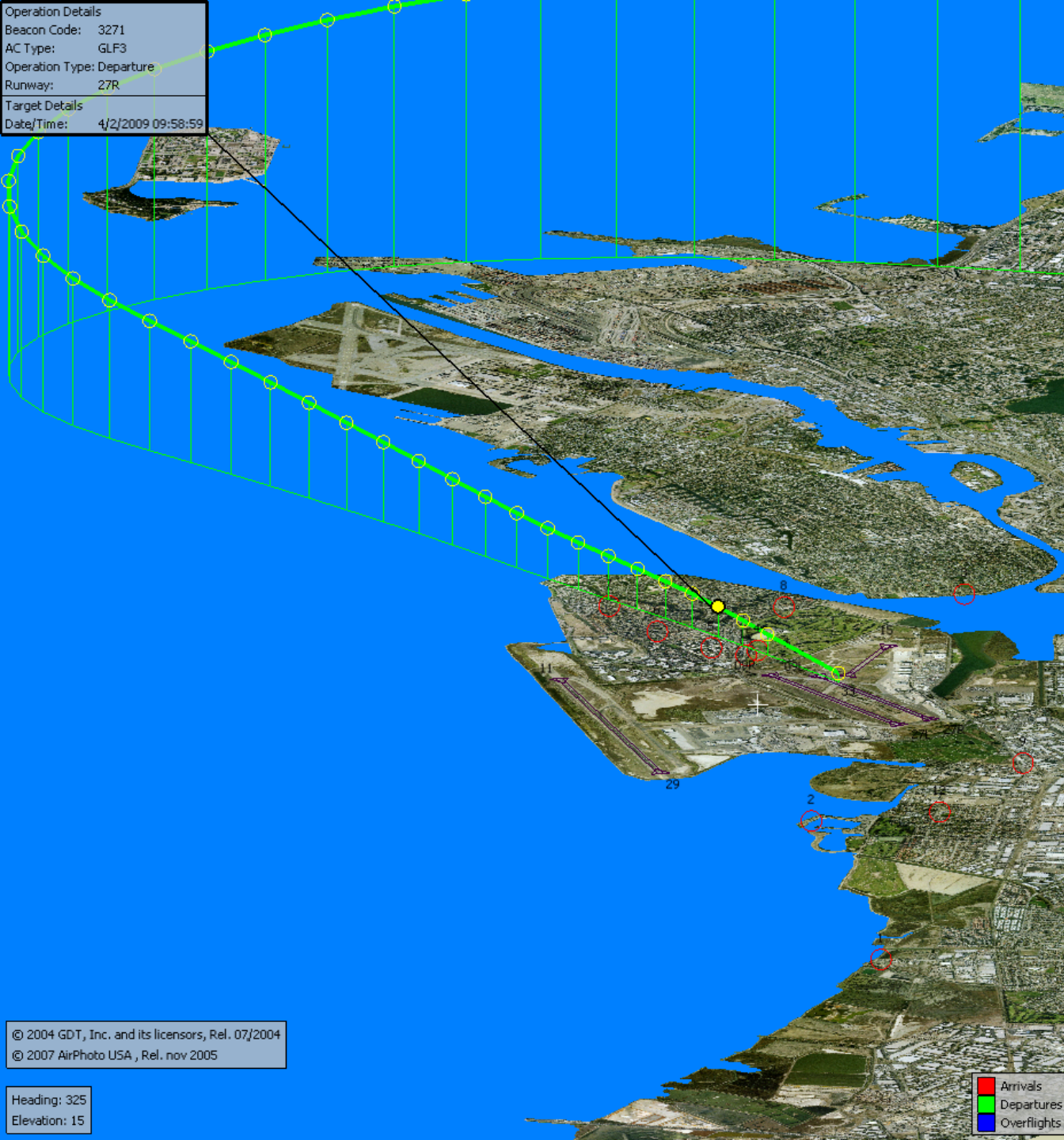
North/South Field Working Groups

NOISE ABATEMENT REPORT

THIRD QUARTER 2011



Operation Details
Beacon Code: 3271
AC Type: GLF3
Operation Type: Departure
Runway: 27R
Target Details
Date/Time: 4/2/2009 09:58:59



Runway 27L/R Jet Departure NAP

2011Q3
93% Compliance
(2,041 departures)

2010Q3
96% Compliance
(1,826 departures)

© 2004 GDT, Inc. and its licensors, Rel. 07/2004
© 2007 AirPhoto USA, Rel. nov 2005

Heading: 325
Elevation: 15

Arrivals
Departures
Overflights

Operation Details
Beacon Code: 1002
AC Type: BE40
Operation Type: Arrival
Runway: 09R
Target Details
Date/Time: 4/7/2009 12:09:00

Runway 09L/R Jet Landing NAP

2011Q3
100% Compliance
(1 landing)

2010Q3
N/A% Compliance
(0 landings)

© 2004 GDT, Inc. and its licensors, Rel. 07/2004
© 2007 AirPhoto USA, Rel. nov 2005

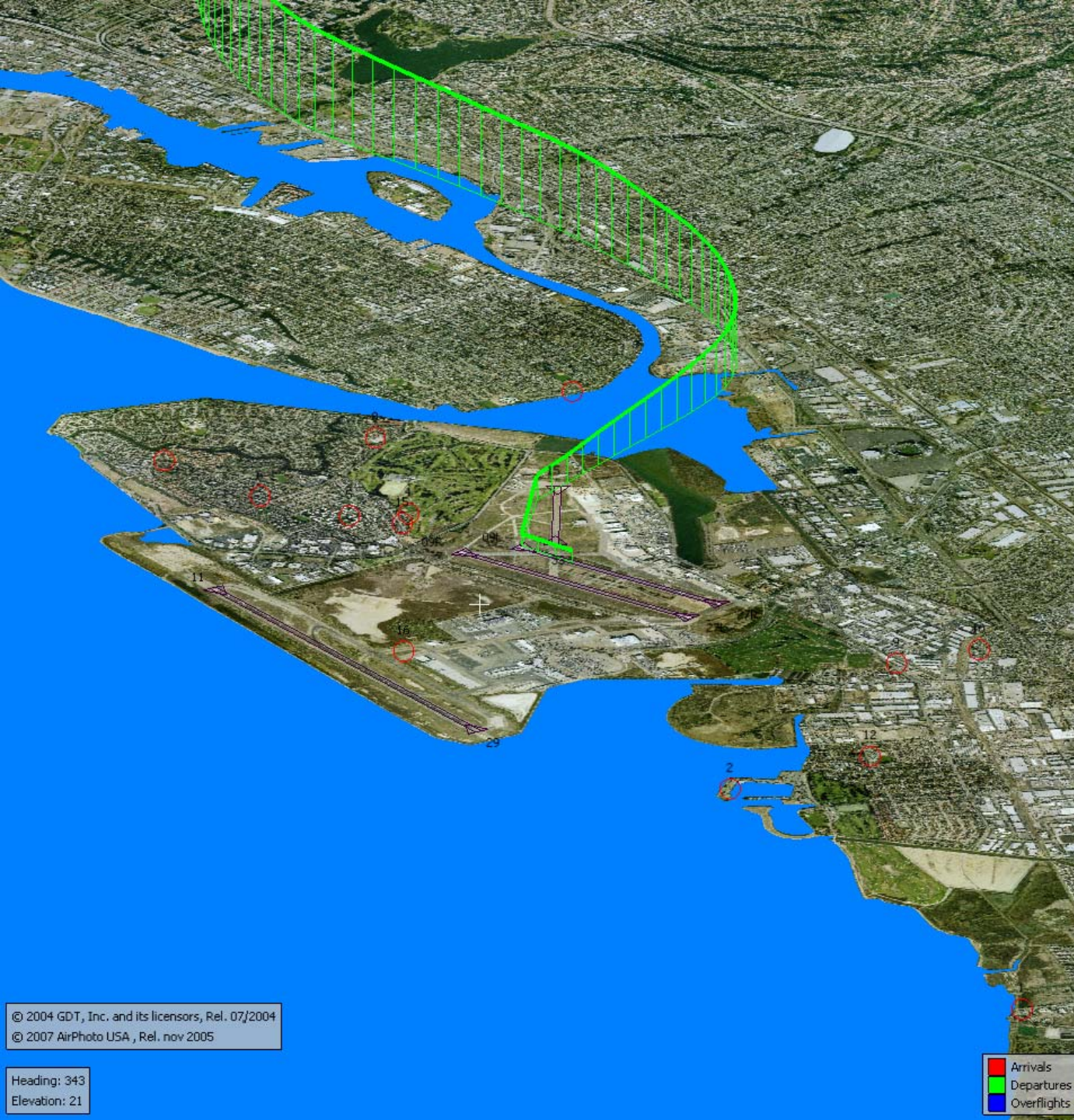
Heading: 325
Elevation: 15

Arrivals
Departures
Overflights

VFR Aircraft Departure NAP

2011Q3
98% Compliance
(1,156 departures)

2010Q3
99% Compliance
(1,832 departures)



© 2004 GDT, Inc. and its licensors, Rel. 07/2004
© 2007 AirPhoto USA, Rel. nov 2005

Heading: 343
Elevation: 21

Arrivals
Departures
Overflights

North Field Quiet Hours NAP

2011Q3
93% Compliance
(499 departures)

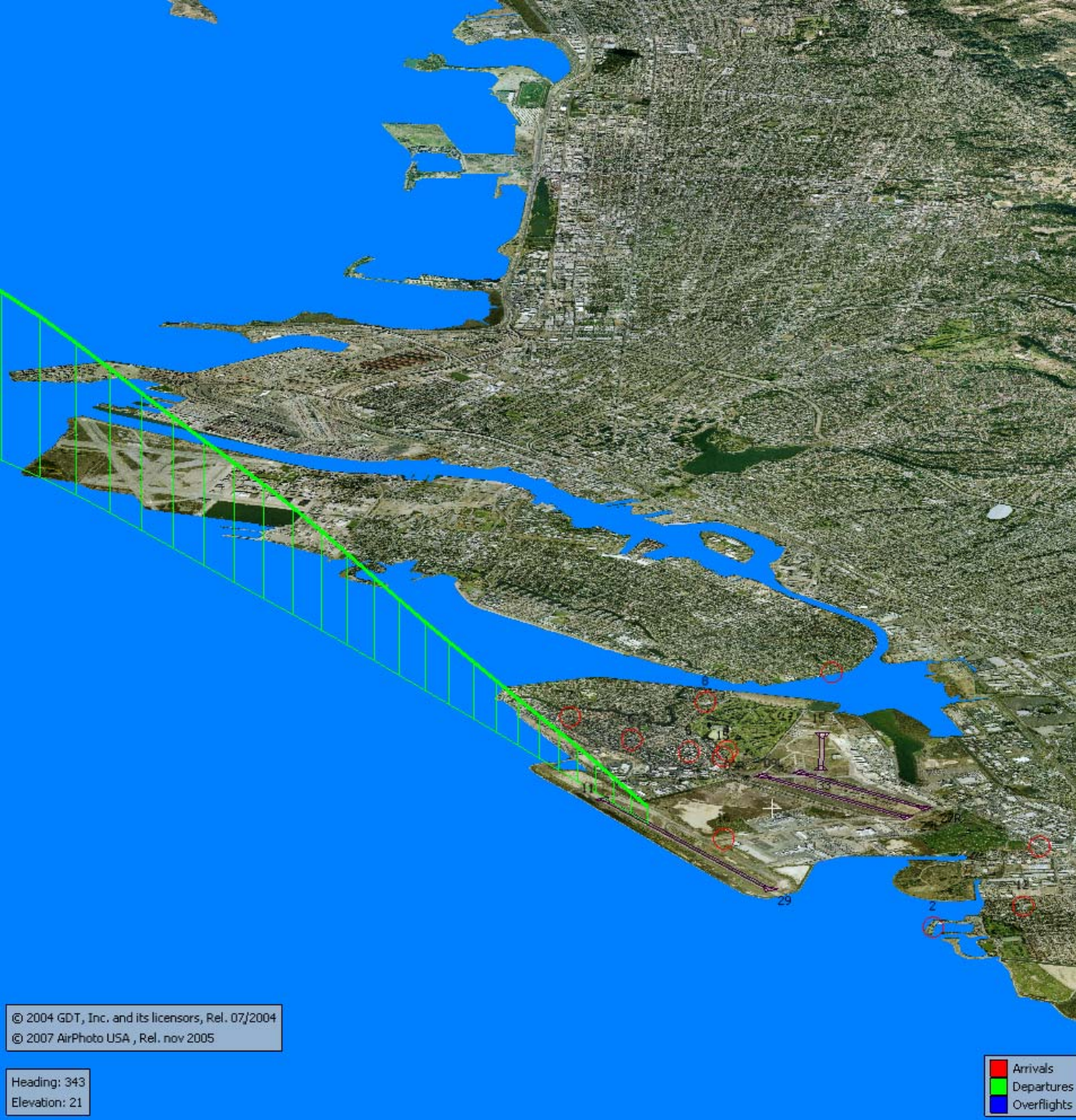
2010Q3
98% Compliance
(670 departures)



Runway 29 Bay Farm Right Turn NAP

2011Q3
100% Compliance
(15,750 departures)

2010Q3
100% Compliance
(16,172 departures)



Silent7 Night Departure NAP

2011Q3
99% Compliance
(3,042 departures)

2010Q3
99% Compliance
(2,584 departures)



© 2004 GDT, Inc. and its licensors, Rel. 07/2004
© 2007 AirPhoto USA, Rel. nov 2005

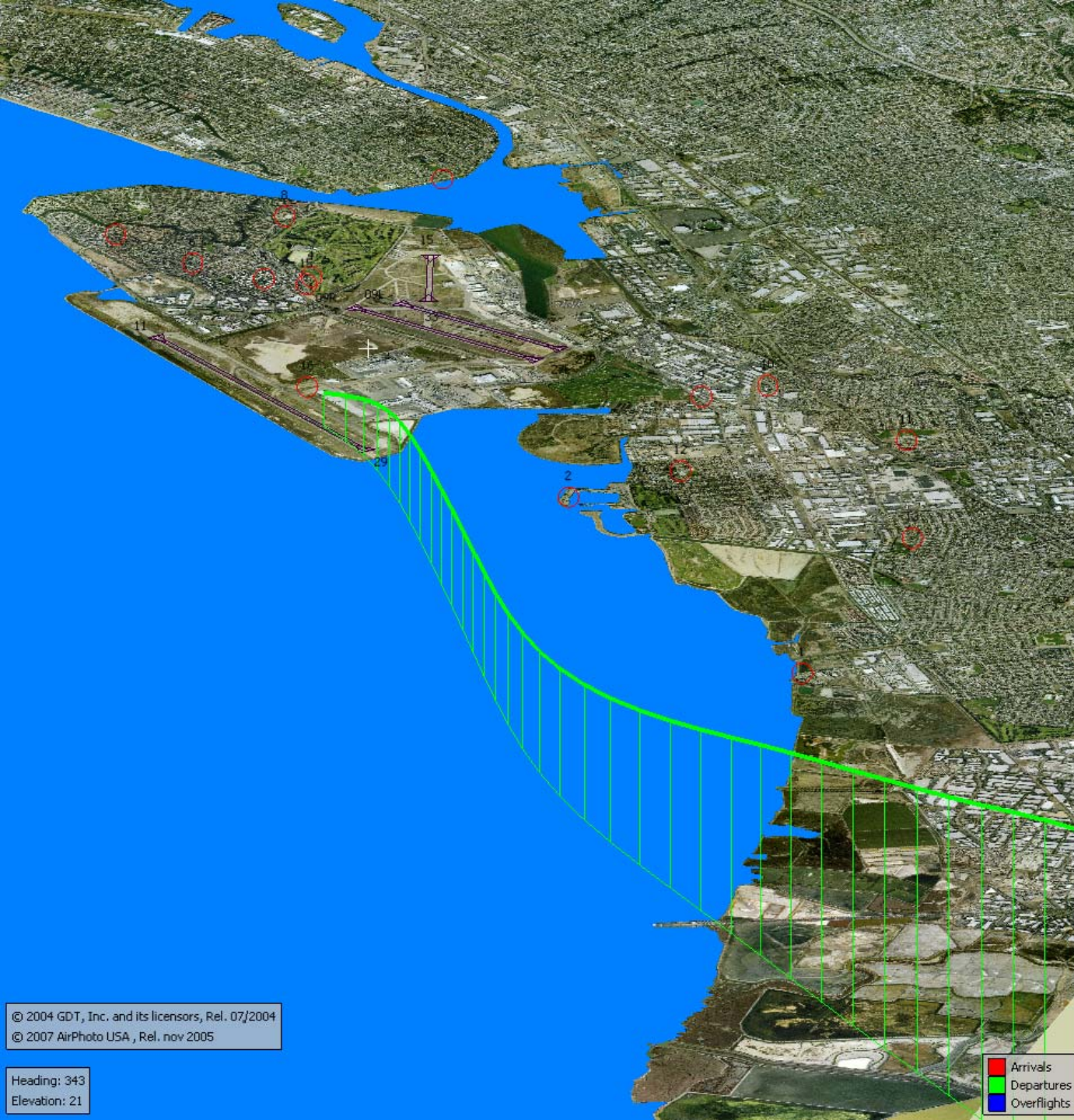
Heading: 343
Elevation: 21

Arrivals
Departures
Overflights

Runway 11 Night Departure NAP

2011Q3
100% Compliance
(3 departures)

2010Q3
N/A% Compliance
(0 departures)



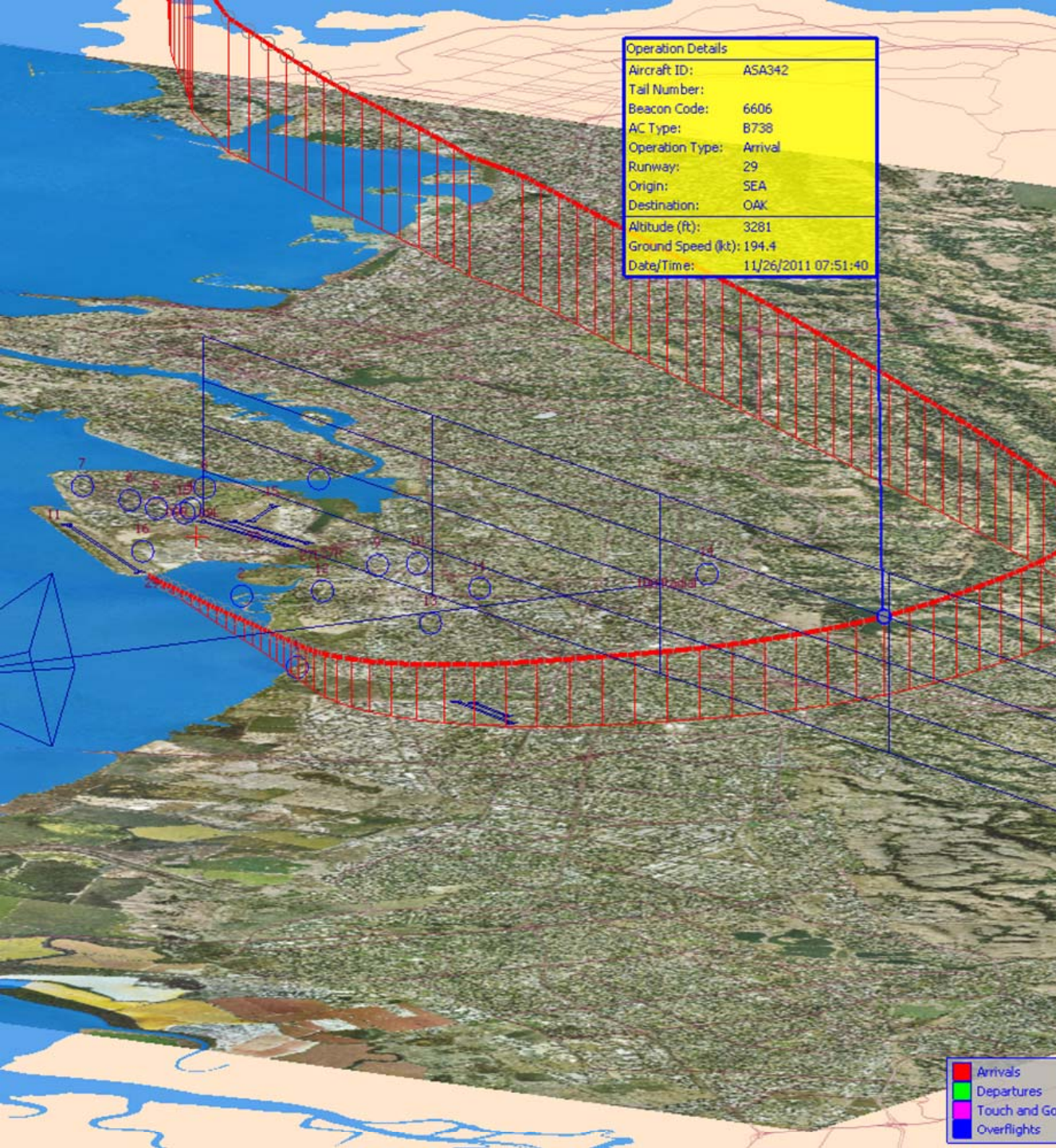
Operation Details	
Aircraft ID:	SWA771
Tail Number:	
Beacon Code:	1156
AC Type:	B737
Operation Type:	Departure
Runway:	29
Origin:	OAK
Destination:	BOI
Altitude (ft):	4833
Ground Speed (kt):	231.3
Date/Time:	11/28/2011 10:37:46

Runway 29 East Turn NAP

2011Q3
97% Compliance
(4,373 departures)

2010Q3
96% Compliance
(4,627 departures)

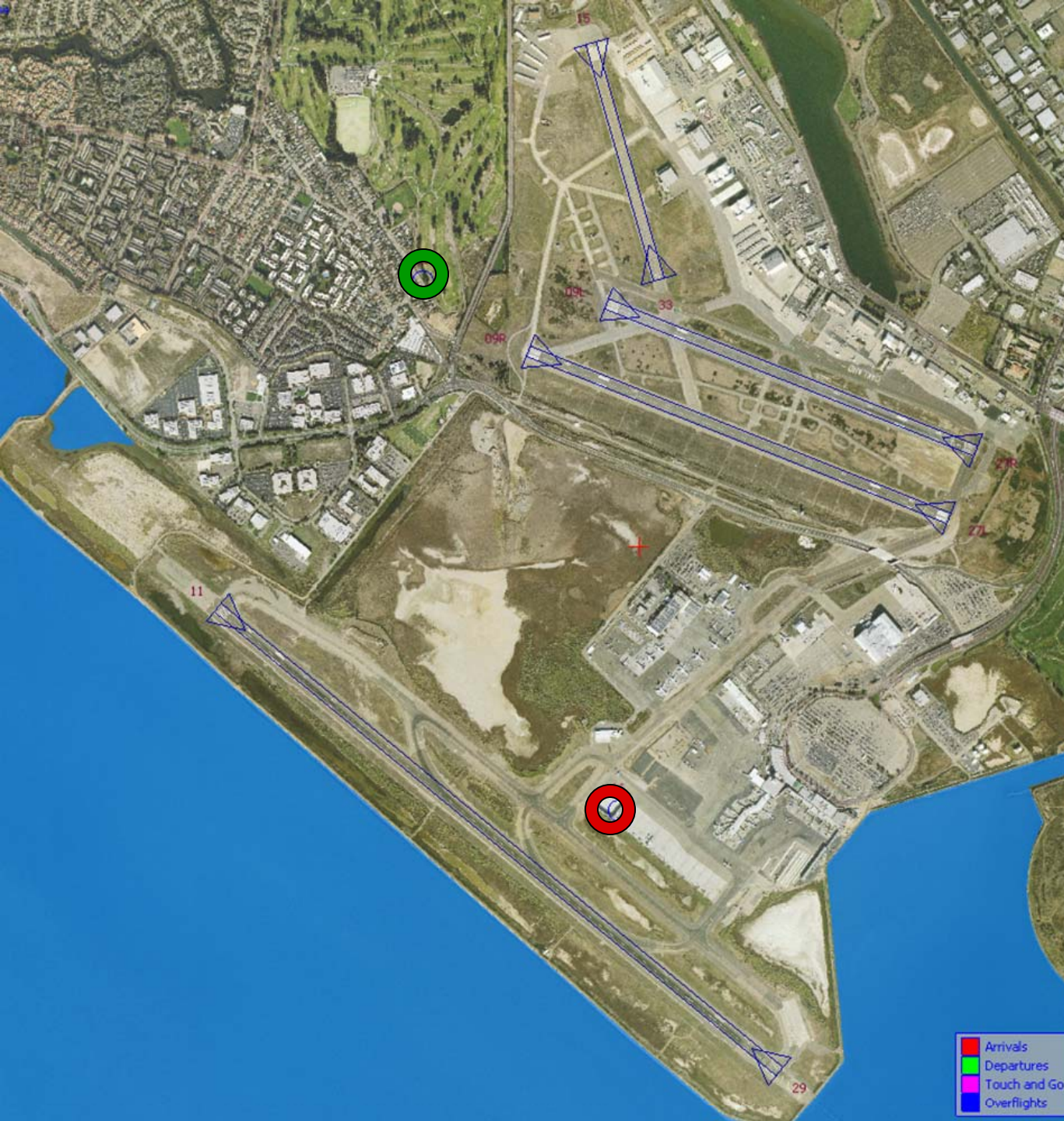




**100 Degree Radial
At 3,000 ft. NAP**

**2011Q3
93% Compliance
(2,844 landings)**

**2010Q3
88% Compliance
(2,947 landings)**



Engine Run-up NAP

2011Q3
100% Compliance
(22 engine runups)

2010Q3
100% Compliance
(93 engine runups)

Table 1. North Field Night Aircraft Departure SEL Noise Measurements
Total Aircraft Departures = 499

Third Quarter 2011 (10:00 p.m. to 6:00 a.m.)

NMT Number	Aircraft Noise Events Below SEL 80 dBA	Aircraft Noise Events SEL 80 - 84.9 dBA			Aircraft Noise Events SEL 85 - 89.9 dBA			Aircraft Noise Events SEL ≥ 90 dBA			Total Aircraft Noise Events
		Amount	Nightly Average	As Percentage of Departures	Amount	Nightly Average	As Percentage of Departures	Amount	Nightly Average	As Percentage of Departures	
1	1	0	0.0	0.0%	1	0.0	0.2%	0	0.0	0.0%	2
2	61	2	0.0	0.4%	0	0.0	0.0%	0	0.0	0.0%	63
3	24	4	0.0	0.7%	1	0.0	0.2%	0	0.0	0.0%	29
4	63	44	0.5	7.8%	12	0.1	2.1%	10	0.1	1.8%	129
5	63	10	0.1	1.8%	3	0.0	0.5%	12	0.1	2.1%	88
6	15	5	0.1	0.9%	1	0.0	0.2%	9	0.1	1.6%	30
7	3	5	0.1	0.9%	7	0.1	1.2%	0	0.0	0.0%	15
8	78	21	0.2	3.7%	3	0.0	0.5%	1	0.0	0.2%	103
9	35	9	0.1	1.6%	3	0.0	0.5%	0	0.0	0.0%	47
10	19	3	0.0	0.5%	1	0.0	0.2%	0	0.0	0.0%	23
11	6	1	0.0	0.2%	0	0.0	0.0%	0	0.0	0.0%	7
12	53	2	0.0	0.4%	1	0.0	0.2%	0	0.0	0.0%	56
13	2	0	0.0	0.0%	0	0.0	0.0%	0	0.0	0.0%	2
14	11	0	0.0	0.0%	0	0.0	0.0%	0	0.0	0.0%	11
All NMTs	434	106	1		33	0		32	0		605

Table 2. Aircraft SEL Noise Measurements in Alameda - Total Aircraft Departures = 296

Third Quarter 2011 (10:00 p.m. to 6:00 a.m.)											
NMT Number	Aircraft Noise Events Below SEL 80 dBA	Aircraft Noise Events SEL 80 - 84.9 dBA			Aircraft Noise Events SEL 85 - 89.9 dBA			Aircraft Noise Events SEL ≥ 90 dBA			Total Aircraft Noise Events
		Amount	Nightly Average	As Percentage of Departures	Amount	Nightly Average	As Percentage of Departures	Amount	Nightly Average	As Percentage of Departures	
3	24	4	0.0	1.7%	1	0.0	0.4%	0	0.0	0.0%	29
4	63	44	0.5	18.4%	12	0.1	5.0%	10	0.1	4.2%	129
5	63	10	0.1	4.2%	3	0.0	1.3%	12	0.1	5.0%	88
6	15	5	0.1	2.1%	1	0.0	0.4%	9	0.1	3.8%	30
7	3	5	0.1	2.1%	7	0.1	2.9%	0	0.0	0.0%	15
8	78	21	0.2	8.8%	3	0.0	1.3%	1	0.0	0.4%	103
Total	246	89	1.0		27	0.3		32	0.4		394

Table 3. Aircraft SEL Noise Measurements in San Leandro - Total Aircraft Departures = 203

Third Quarter 2011 (10:00 p.m. to 6:00 a.m.)											
NMT Number	Aircraft Noise Events Below SEL 80 dBA	Aircraft Noise Events SEL 80 - 84.9 dBA			Aircraft Noise Events SEL 85 - 89.9 dBA			Aircraft Noise Events SEL ≥ 90 dBA			Total Aircraft Noise Events
		Amount	Nightly Average	As Percentage of Departures	Amount	Nightly Average	As Percentage of Departures	Amount	Nightly Average	As Percentage of Departures	
2	61	2	0.0	0.6%	0	0.0	0.0%	0	0.0	0.0%	63
9	35	9	0.1	2.7%	3	0.0	0.9%	0	0.0	0.0%	47
10	19	3	0.0	0.9%	1	0.0	0.3%	0	0.0	0.0%	23
11	6	1	0.0	0.3%	0	0.0	0.0%	0	0.0	0.0%	7
12	53	2	0.0	0.6%	1	0.0	0.3%	0	0.0	0.0%	56
13	2	0	0.0	0.0%	0	0.0	0.0%	0	0.0	0.0%	2
14	11	0	0.0	0.0%	0	0.0	0.0%	0	0.0	0.0%	11
Total	187	17	0.2		5	0.1		0	0.0		209