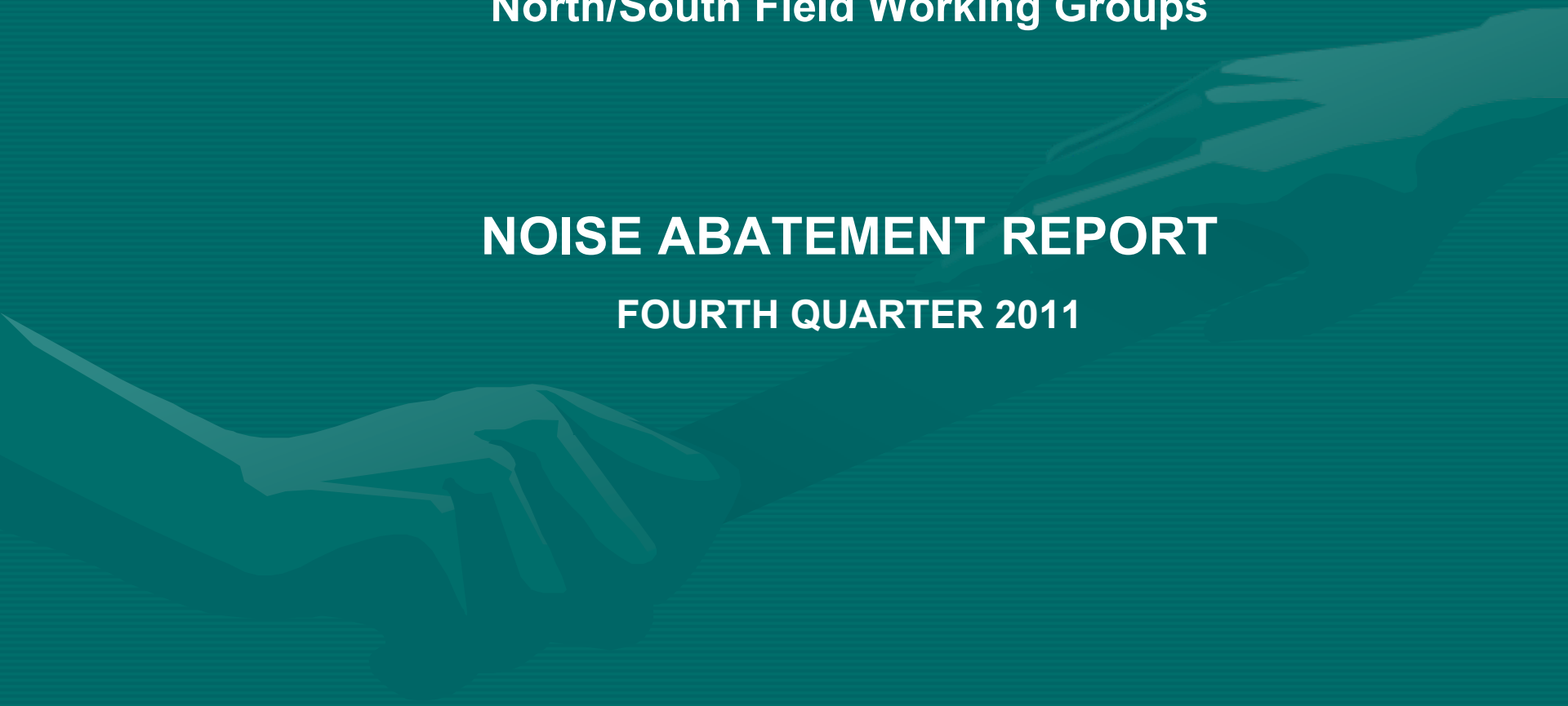


# **NOISE FORUM SUMMARY**

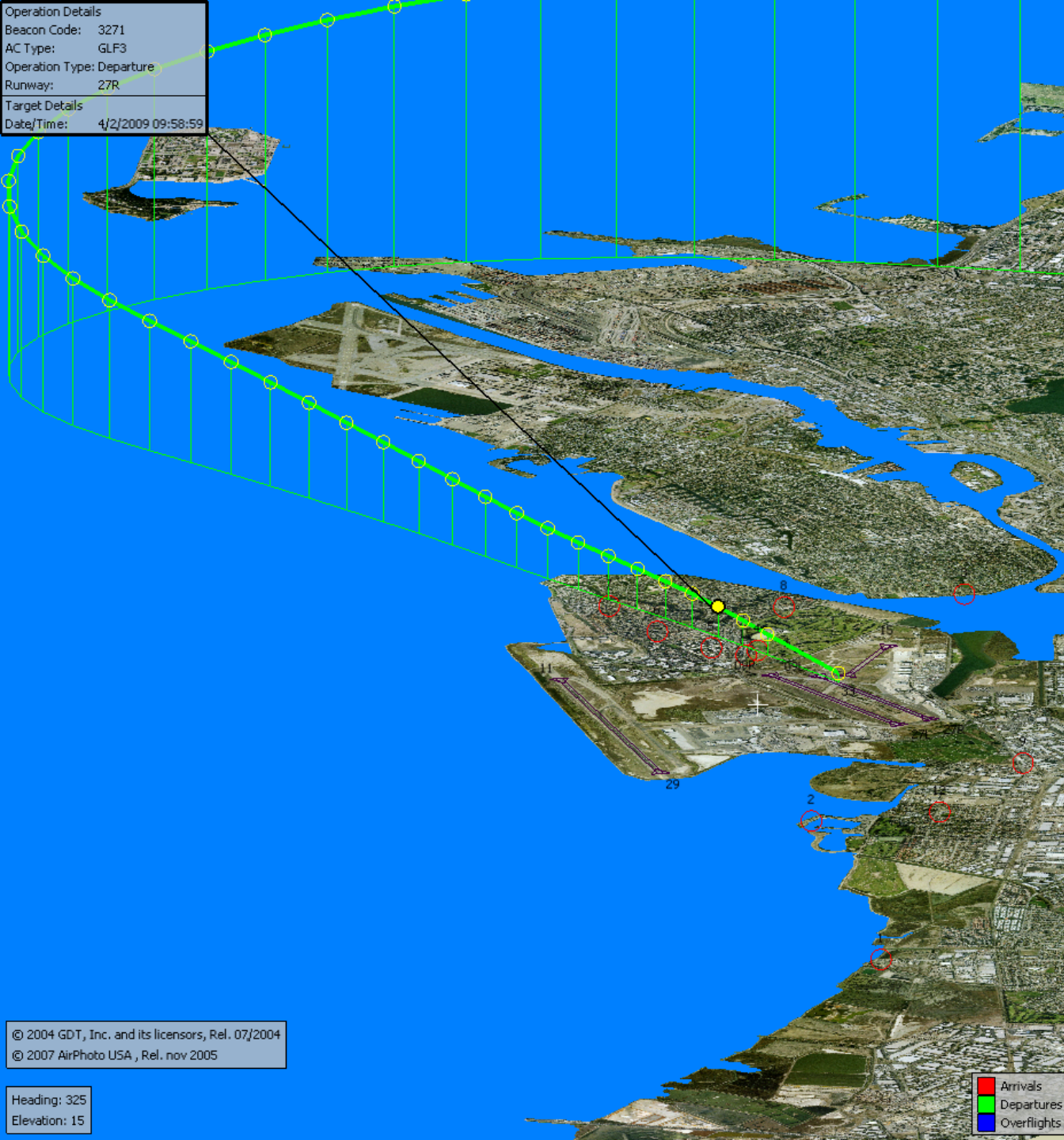
**North/South Field Working Groups**

**NOISE ABATEMENT REPORT**

**FOURTH QUARTER 2011**



Operation Details  
Beacon Code: 3271  
AC Type: GLF3  
Operation Type: Departure  
Runway: 27R  
Target Details  
Date/Time: 4/2/2009 09:58:59



## Runway 27L/R Jet Departure NAP

**2011Q4**  
**96% Compliance**  
**(2,093 departures)**

**2010Q4**  
**97% Compliance**  
**(2,028 departures)**

© 2004 GDT, Inc. and its licensors, Rel. 07/2004  
© 2007 AirPhoto USA, Rel. nov 2005

Heading: 325  
Elevation: 15

Arrivals  
Departures  
Overflights

Operation Details  
Beacon Code: 1002  
AC Type: BE40  
Operation Type: Arrival  
Runway: 09R

Target Details  
Date/Time: 4/7/2009 12:09:00

Heading: 325  
Elevation: 15

Legend:  
Arrivals (Red)  
Departures (Green)  
Overflights (Blue)

## Runway 09L/R Jet Landing NAP

**2011Q4**  
**89% Compliance**  
**(96 landings)**

**2010Q4**  
**72% Compliance**  
**(278 landings)**

© 2004 GDT, Inc. and its licensors, Rel. 07/2004  
© 2007 AirPhoto USA , Rel. nov 2005

Heading: 325  
Elevation: 15

■ Arrivals  
■ Departures  
■ Overflights



## VFR Aircraft Departure NAP

**2011Q4**  
**95% Compliance**  
**(920 departures)**

**2010Q4**  
**98% Compliance**  
**(1,333 departures)**



© 2004 GDT, Inc. and its licensors, Rel. 07/2004  
© 2007 AirPhoto USA, Rel. nov 2005

Heading: 343  
Elevation: 21

Arrivals  
Departures  
Overflights



## North Field Quiet Hours NAP

**2011Q4**  
**85% Compliance**  
**(393 departures)**

**2010Q4**  
**95% Compliance**  
**(578 departures)**

© 2004 GDT, Inc. and its licensors, Rel. 07/2004  
© 2007 AirPhoto USA, Rel. nov 2005

Heading: 343  
Elevation: 21

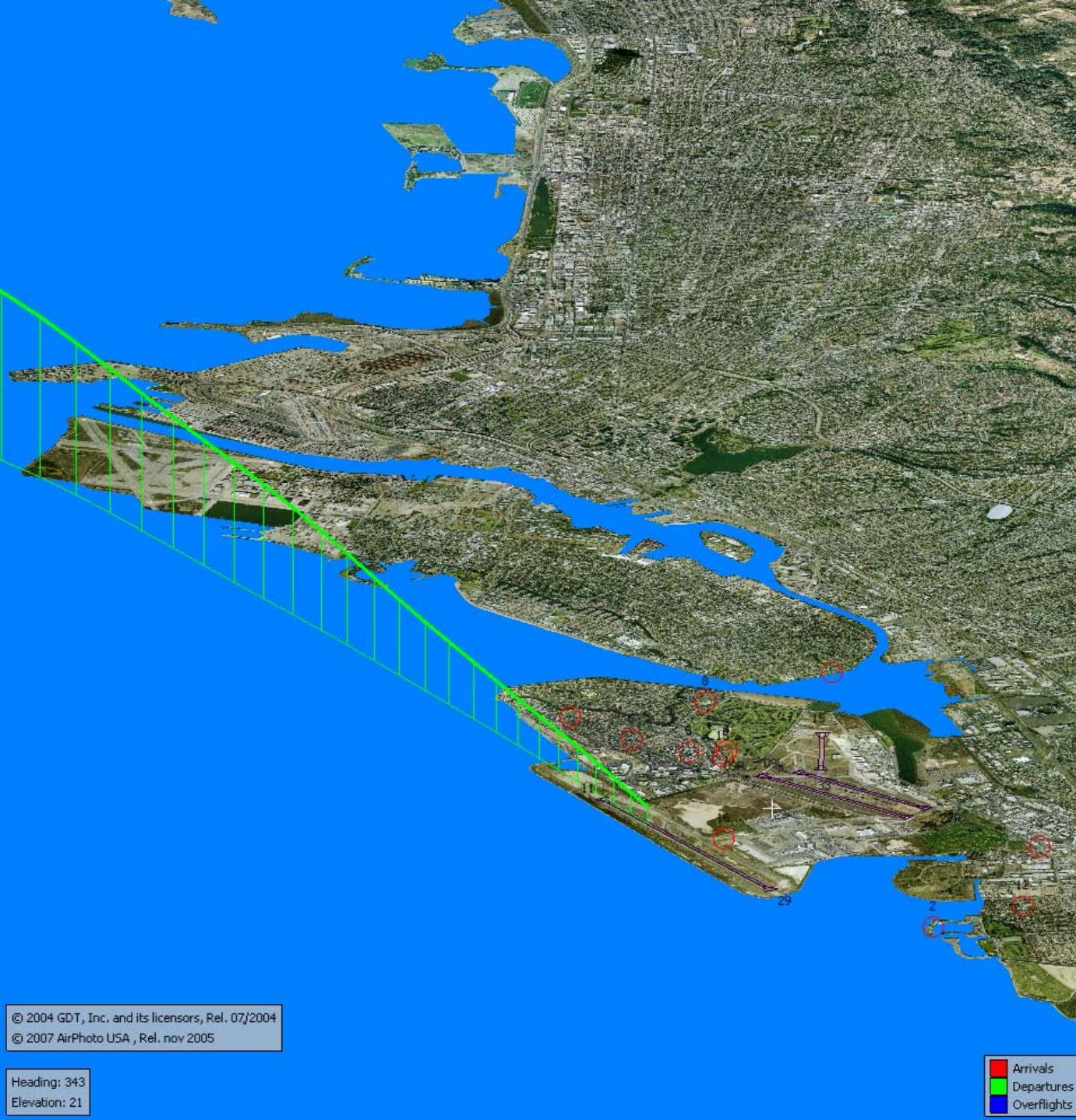




## Runway 29 Bay Farm Right Turn NAP

**2011Q4**  
**100% Compliance**  
**(15,494 departures)**

**2010Q4**  
**100% Compliance**  
**(13,633 departures)**

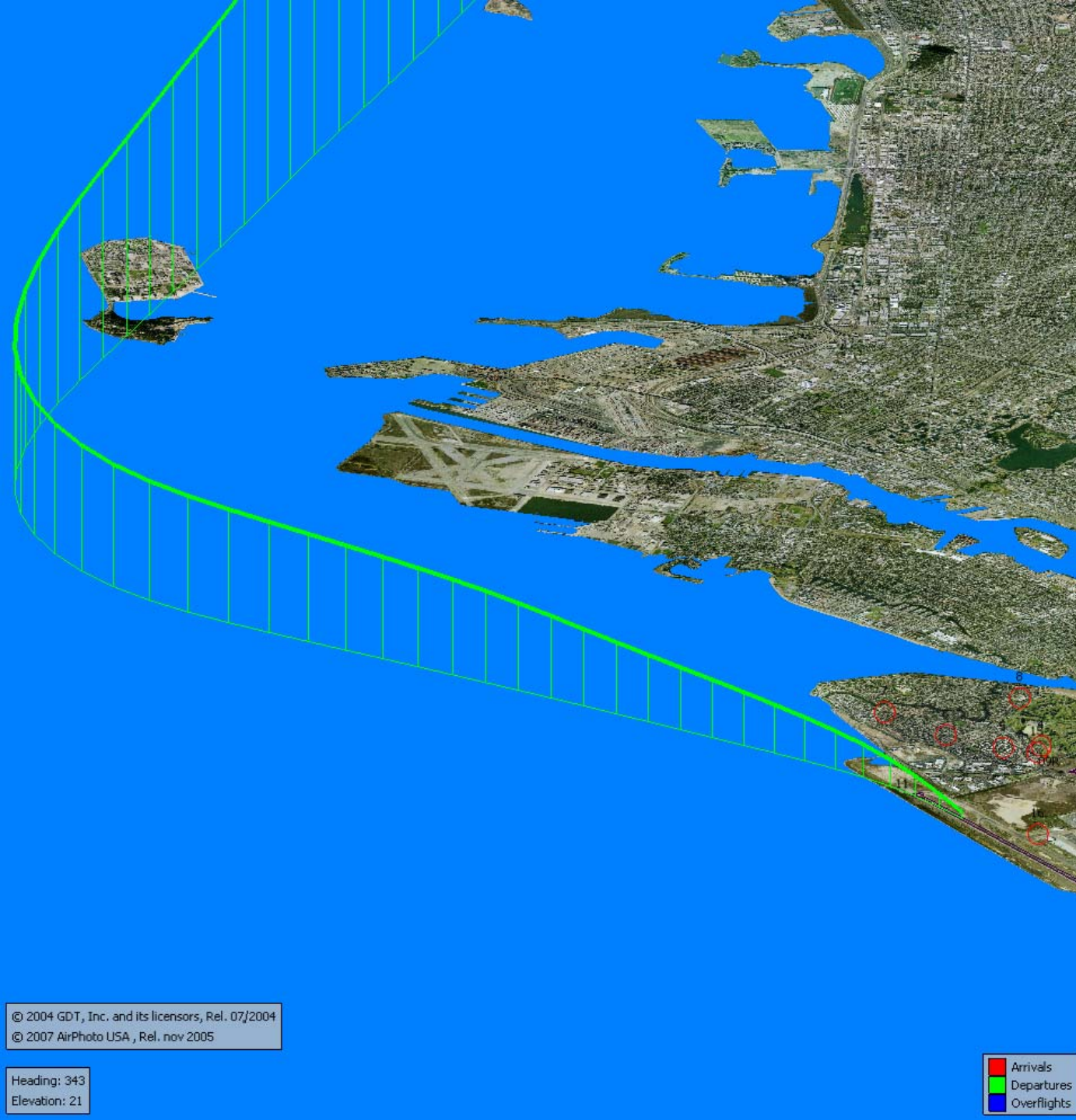




## Silent7 Night Departure NAP

**2011Q4**  
**93% Compliance**  
**(2,956 departures)**

**2010Q4**  
**99% Compliance**  
**(2,248 departures)**



© 2004 GDT, Inc. and its licensors, Rel. 07/2004  
© 2007 AirPhoto USA, Rel. nov 2005

Heading: 343  
Elevation: 21

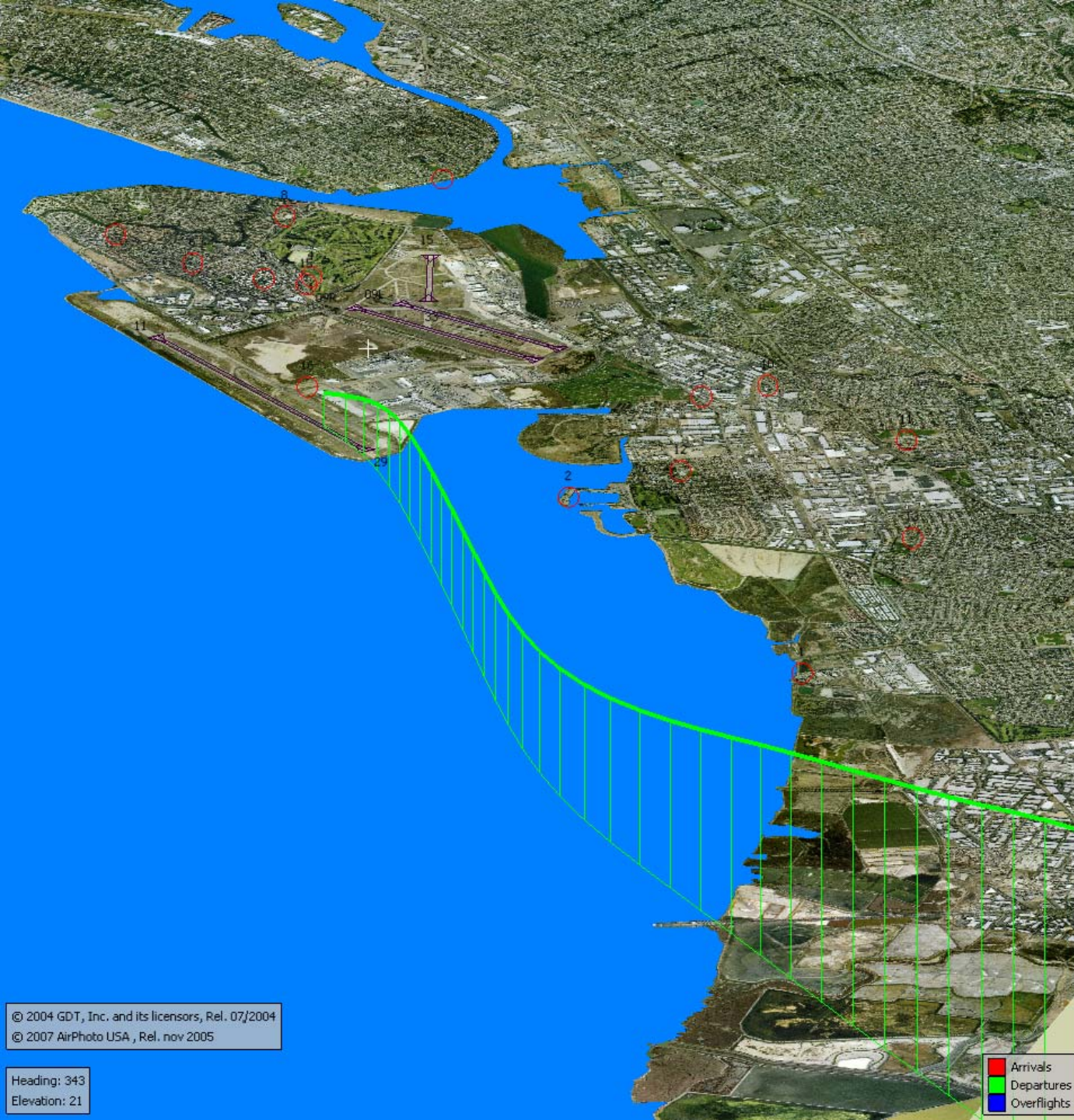
Arrivals  
Departures  
Overflights



## Runway 11 Night Departure NAP

**2011Q4**  
**96% Compliance**  
**(79 departures)**

**2010Q4**  
**96% Compliance**  
**(171 departures)**



© 2004 GDT, Inc. and its licensors, Rel. 07/2004  
© 2007 AirPhoto USA, Rel. nov 2005

Heading: 343  
Elevation: 21

Arrivals  
Departures  
Overflights



Operation Details	
Aircraft ID:	SWA771
Tail Number:	
Beacon Code:	1156
AC Type:	B737
Operation Type:	Departure
Runway:	29
Origin:	OAK
Destination:	BOI
Altitude (ft):	4833
Ground Speed (kt):	231.3
Date/Time:	11/28/2011 10:37:46

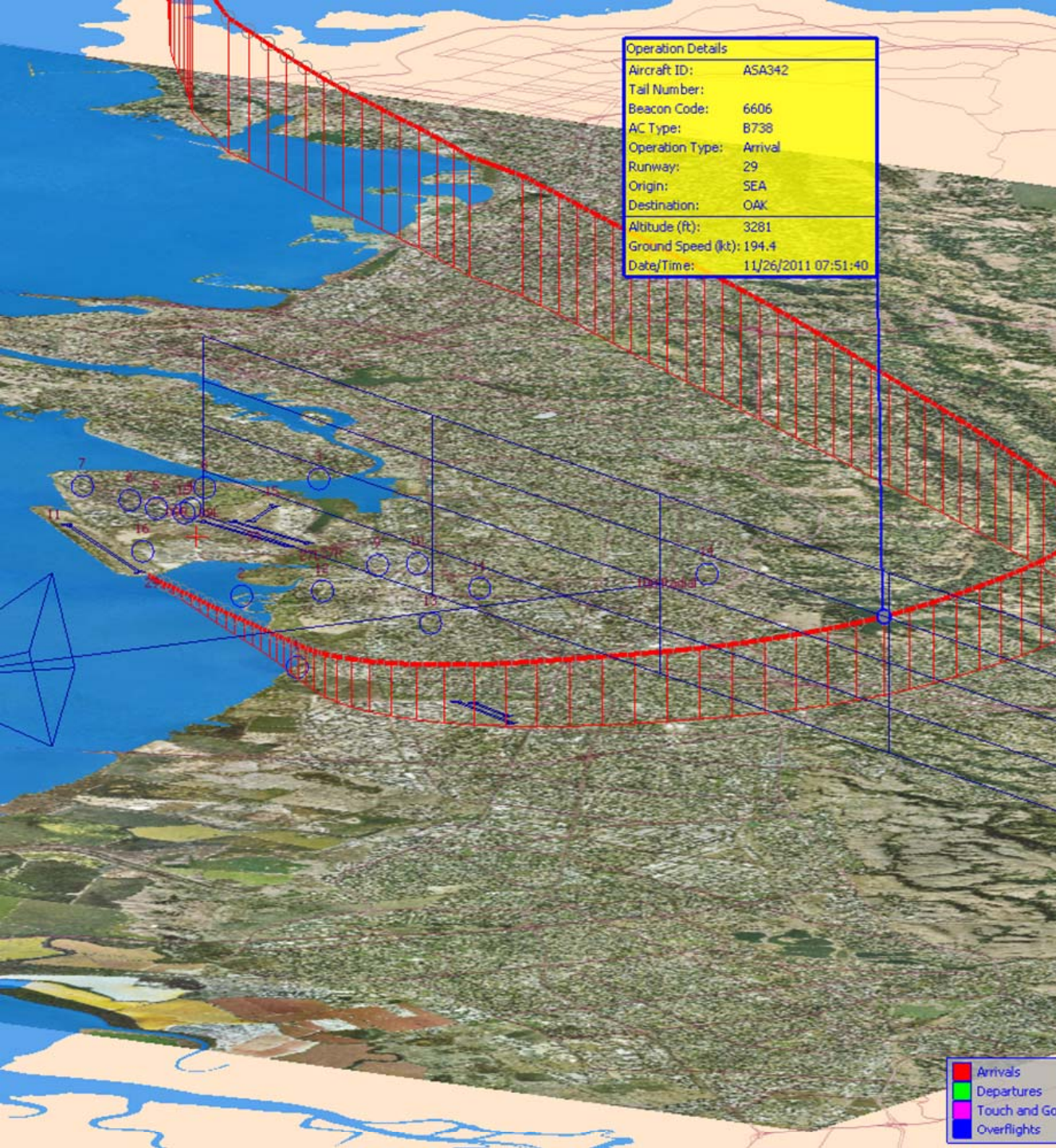
## Runway 29 East Turn NAP

**2011Q4**  
**99% Compliance**  
**(4,054 departures)**

**2010Q4**  
**96% Compliance**  
**(3,886 departures)**





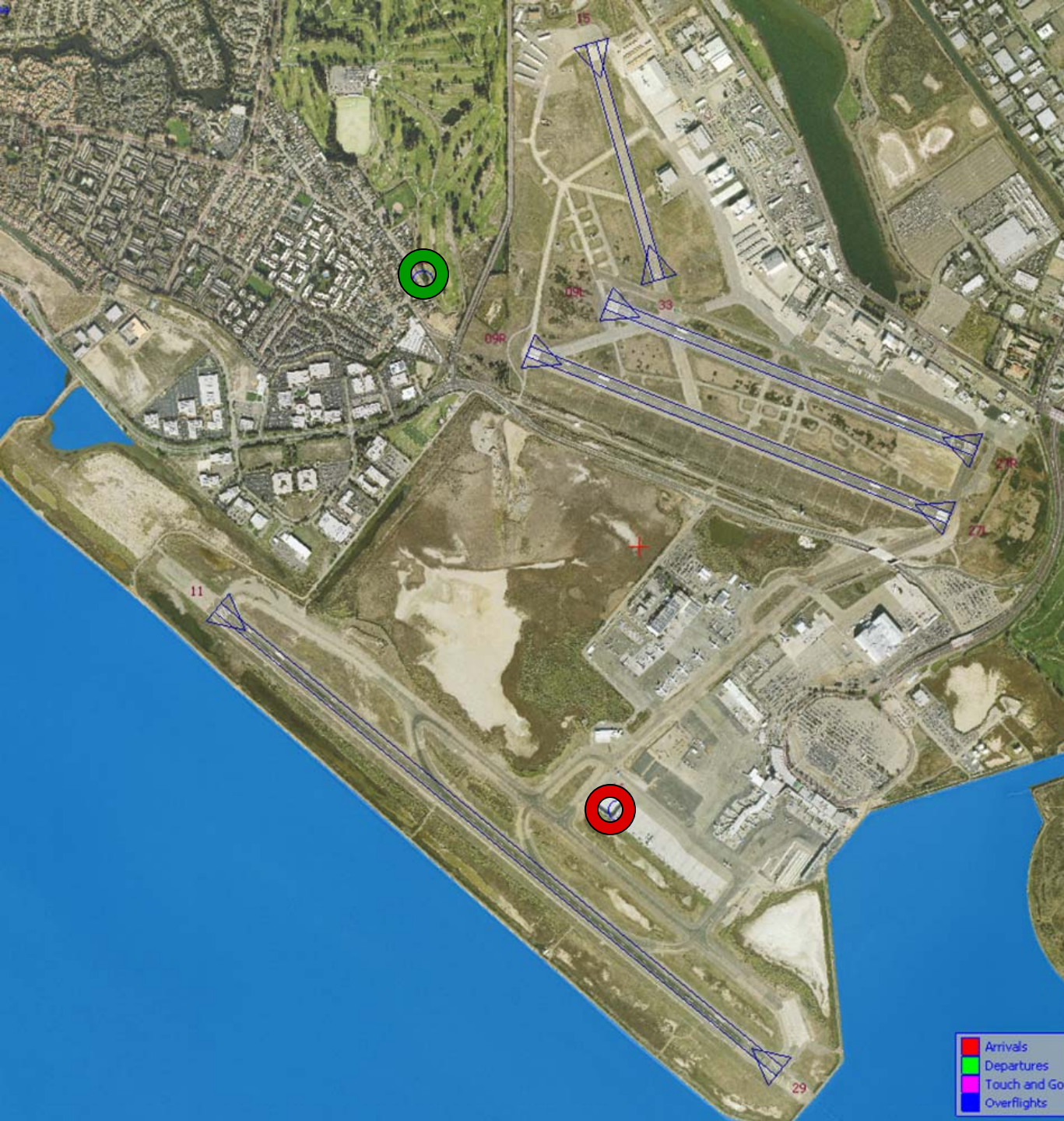


**100 Degree Radial  
At 3,000 ft. NAP**

**2011Q4  
93% Compliance  
(2,525 landings)**

**2010Q4  
87% Compliance  
(2,431 landings)**



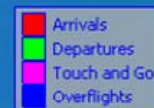


## Engine Run-up NAP

**2011Q4**  
**100% Compliance**  
**(16 engine run-ups)\***

**2010Q4**  
**100% Compliance**  
**(58 engine run-ups)**

**\*Only above idle-power run-ups  
recorded.**



**Table 1. North Field Night Aircraft Departure SEL Noise Measurements**  
**Total Aircraft Departures = 393**

**Fourth Quarter 2011 (10:00 p.m. to 6:00 a.m.)**

NMT Number	Aircraft Noise Events Below SEL 80 dBA	Aircraft Noise Events SEL 80 - 84.9 dBA			Aircraft Noise Events SEL 85 - 89.9 dBA			Aircraft Noise Events SEL ≥ 90 dBA			Total Aircraft Noise Events
		Amount	Nightly Average	As Percentage of Departures	Amount	Nightly Average	As Percentage of Departures	Amount	Nightly Average	As Percentage of Departures	
1	5	0	0.0	0.0%	2	0.0	0.4%	0	0.0	0.0%	7
2	128	10	0.1	1.8%	4	0.0	0.7%	0	0.0	0.0%	142
3	31	6	0.1	1.1%	0	0.0	0.0%	0	0.0	0.0%	37
4	114	31	0.3	5.5%	23	0.3	4.1%	12	0.1	2.1%	180
5	61	12	0.1	2.1%	1	0.0	0.2%	10	0.1	1.8%	84
6	16	4	0.0	0.7%	4	0.0	0.7%	7	0.1	1.2%	31
7	16	4	0.0	0.7%	7	0.1	1.2%	0	0.0	0.0%	27
8	27	14	0.2	2.5%	5	0.1	0.9%	0	0.0	0.0%	46
9	50	21	0.2	3.7%	8	0.1	1.4%	3	0.0	0.5%	82
10	109	41	0.5	7.2%	3	0.0	0.5%	0	0.0	0.0%	153
11	6	5	0.1	0.9%	0	0.0	0.0%	0	0.0	0.0%	11
12	115	13	0.1	2.3%	4	0.0	0.7%	3	0.0	0.5%	135
13	6	2	0.0	0.4%	1	0.0	0.2%	0	0.0	0.0%	9
14	24	0	0.0	0.0%	0	0.0	0.0%	0	0.0	0.0%	24
<b>All NMTs</b>	708	163	2	0	62	1	0	35	0	0	968



**Table 2. Aircraft SEL Noise Measurements in Alameda - Total Aircraft Departures = 165**

Fourth Quarter 2011 (10:00 p.m. to 6:00 a.m.)											
NMT Number	Aircraft Noise Events Below SEL 80 dBA	Aircraft Noise Events SEL 80 - 84.9 dBA			Aircraft Noise Events SEL 85 - 89.9 dBA			Aircraft Noise Events SEL ≥ 90 dBA			Total Aircraft Noise Events
		Amount	Nightly Average	As Percentage of Departures	Amount	Nightly Average	As Percentage of Departures	Amount	Nightly Average	As Percentage of Departures	
3	31	6	0.1	2.5%	0	0.0	0.0%	0	0.0	0.0%	37
4	114	31	0.3	13.0%	23	0.3	9.6%	12	0.1	5.0%	180
5	61	12	0.1	5.0%	1	0.0	0.4%	10	0.1	4.2%	84
6	16	4	0.0	1.7%	4	0.0	1.7%	7	0.1	2.9%	31
7	16	4	0.0	1.7%	7	0.1	2.9%	0	0.0	0.0%	27
8	27	14	0.2	5.9%	5	0.1	2.1%	0	0.0	0.0%	46
<b>Total</b>	<b>265</b>	<b>71</b>	<b>0.8</b>		<b>40</b>	<b>0.4</b>		<b>29</b>	<b>0.3</b>		<b>405</b>

**Table 3. Aircraft SEL Noise Measurements in San Leandro - Total Aircraft Departures = 228**

Fourth Quarter 2011 (10:00 p.m. to 6:00 a.m.)											
NMT Number	Aircraft Noise Events Below SEL 80 dBA	Aircraft Noise Events SEL 80 - 84.9 dBA			Aircraft Noise Events SEL 85 - 89.9 dBA			Aircraft Noise Events SEL ≥ 90 dBA			Total Aircraft Noise Events
		Amount	Nightly Average	As Percentage of Departures	Amount	Nightly Average	As Percentage of Departures	Amount	Nightly Average	As Percentage of Departures	
2	128	10	0.1	3.0%	4	0.0	1.2%	0	0.0	0.0%	142
9	50	21	0.2	6.4%	8	0.1	2.4%	3	0.0	0.9%	82
10	109	41	0.5	12.5%	3	0.0	0.9%	0	0.0	0.0%	153
11	6	5	0.1	1.5%	0	0.0	0.0%	0	0.0	0.0%	11
12	115	13	0.1	4.0%	4	0.0	1.2%	3	0.0	0.9%	135
13	6	2	0.0	0.6%	1	0.0	0.3%	0	0.0	0.0%	9
14	24	0	0.0	0.0%	0	0.0	0.0%	0	0.0	0.0%	24
<b>Total</b>	<b>438</b>	<b>92</b>	<b>1.0</b>		<b>20</b>	<b>0.2</b>		<b>6</b>	<b>0.1</b>		<b>556</b>