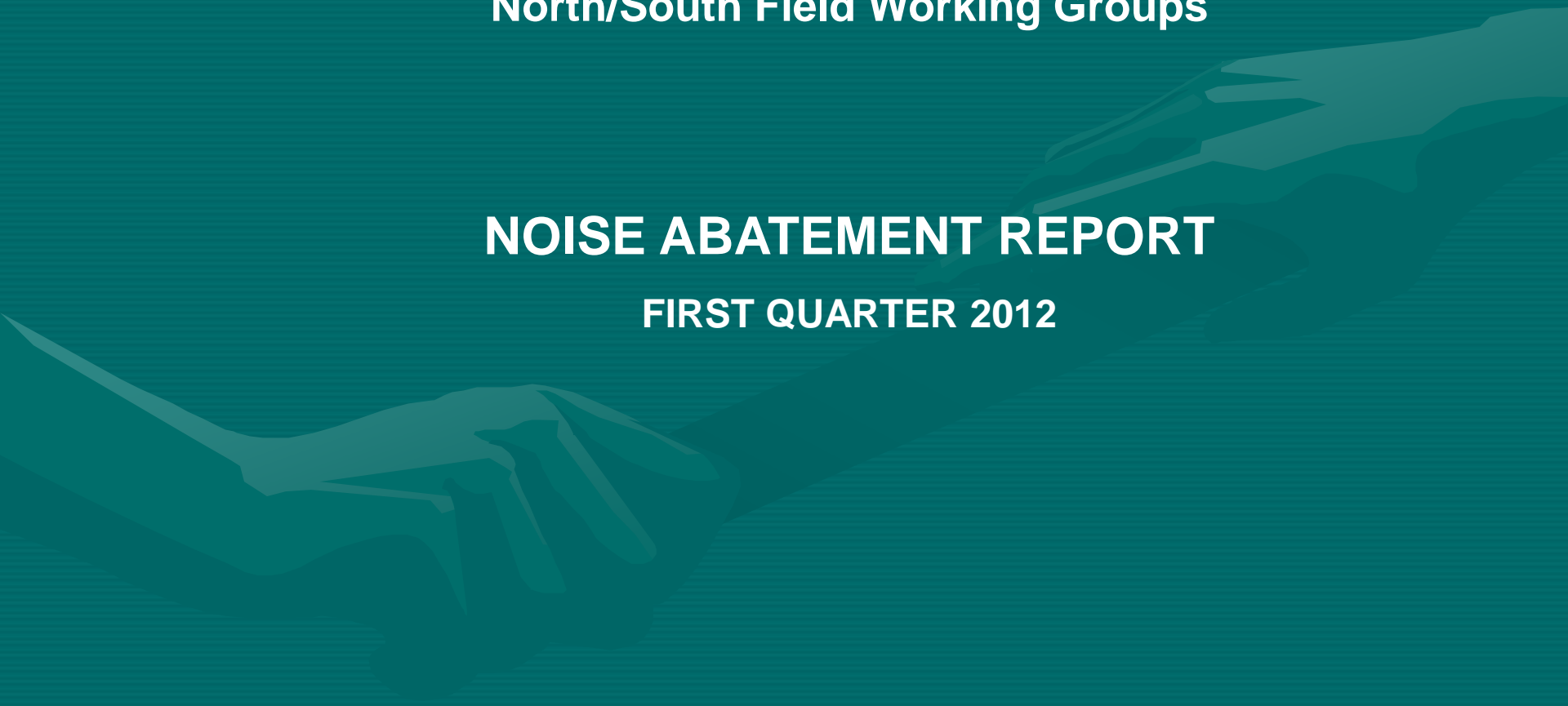


NOISE FORUM SUMMARY

North/South Field Working Groups

NOISE ABATEMENT REPORT

FIRST QUARTER 2012



**Compliance Monitoring Quarterly Summary Comparison
First Quarter 2012**

	2011Q1		2012Q1	
	Compl.	N/C	Compl.	N/C
Runway 27R/L Jet Departure Compliance	96%	4%	97%	3%
Total Airport-wide Corporate Jet Departures	2,113	88	2,299	74
Runway 09R/L Jet Landing Compliance	69%	31%	87%	13%
Total Southeast Plan Corporate Jet Landings	453	141	288	38
North Field VFR Departure Compliance	98%	2%	98%	2%
Total Runways 27R/L & 33 Departures	1,028	19	820	16
North Field Quiet Hours Compliance	95%	5%	84%	16%
Total North Field Quiet Hours Departures	567	28	407	64
Runway 29 BFI Right Turn Departure Compliance	100%	0%	100%	0%
Total Runway 29 Turbojet Departures	12,148	11	13,762	3
Silent7 Night Departure Compliance	99%	1%	99%	1%
Total Runway 29 Night Turbojet Departures	1,959	15	2,519	31
Runway 11 Night Departure Compliance	94%	6%	97%	3%
Total Runway 11 Night Turbojet Departures	239	14	145	4
Runway 29 East Turn Departure Compliance	98%	2%	98%	2%
Total Runway 29 East Turn Departures	3,322	64	3,454	73
100 Degree Radial Turbojet Landing Compliance	92%	8%	92%	8%
Total 100 Degree Radial Turbojet Landings	2,171	177	2,220	188
Engine Runup Program Compliance	100%	0%	100%	0%
Total Evening and Nighttime Engine Runups	11	0	13	0

Operation Details
Beacon Code: 3271
AC Type: GLF3
Operation Type: Departure
Runway: 27R
Target Details
Date/Time: 4/2/2009 09:58:59

Runway 27L/R Jet Departure NAP

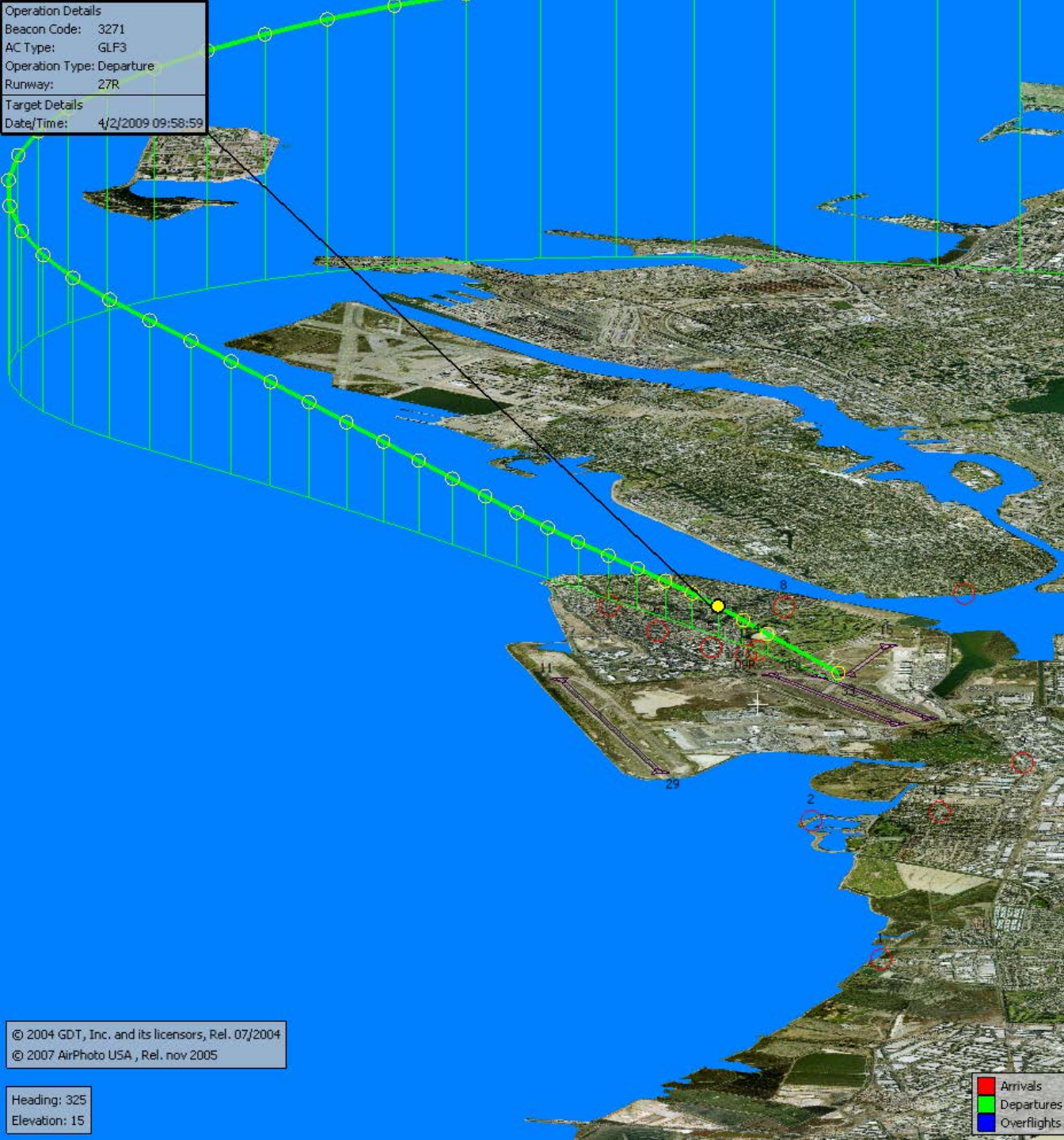
2012Q1
97% Compliance
(2,373 departures)

2011Q1
96% Compliance
(2,201 departures)

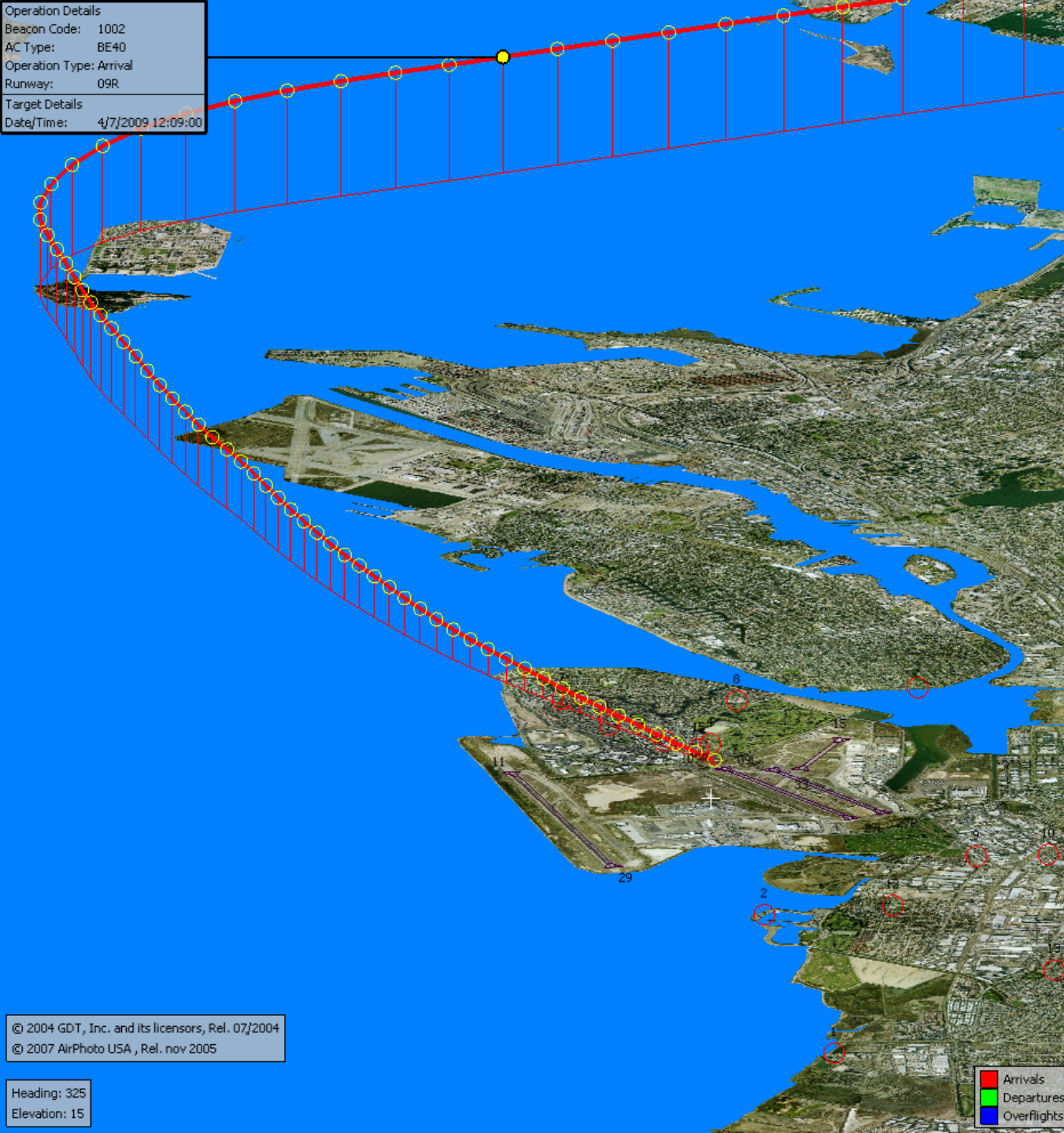
© 2004 GDT, Inc. and its licensors, Rel. 07/2004
© 2007 AirPhoto USA, Rel. nov 2005

Heading: 325
Elevation: 15

Arrivals
Departures
Overflights



Operation Details
Beacon Code: 1002
AC Type: BE40
Operation Type: Arrival
Runway: 09R
Target Details
Date/Time: 4/7/2009 12:09:00



**Runway 09L/R Jet
Landing NAP**

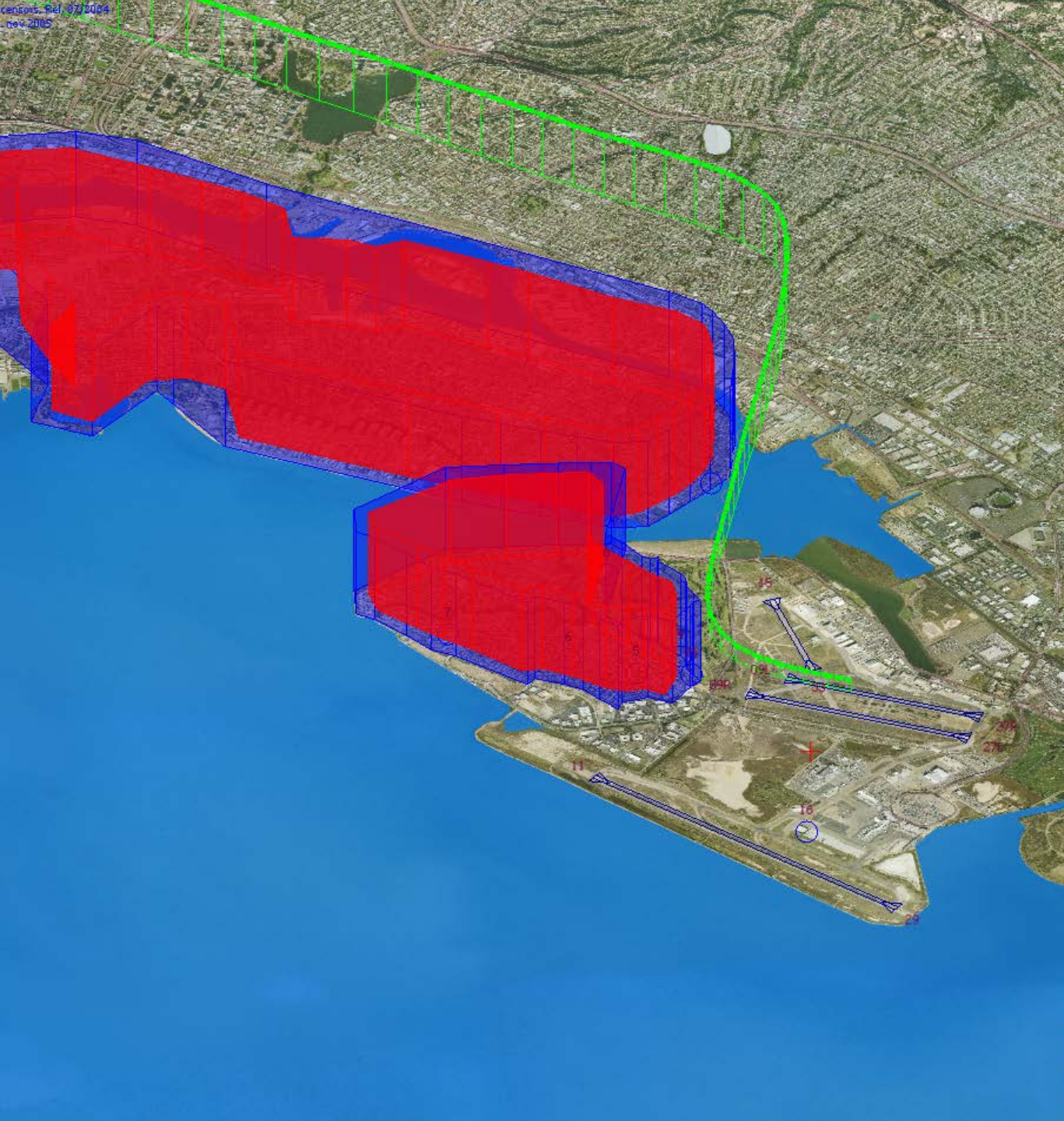
**2012Q1
87% Compliance
(288 landings)**

**2011Q1
69% Compliance
(453 landings)**

© 2004 GDT, Inc. and its licensors, Rel. 07/2004
© 2007 AirPhoto USA, Rel. nov 2005

Heading: 325
Elevation: 15

Arrivals
Departures
Overflights



VFR Aircraft Departure NAP

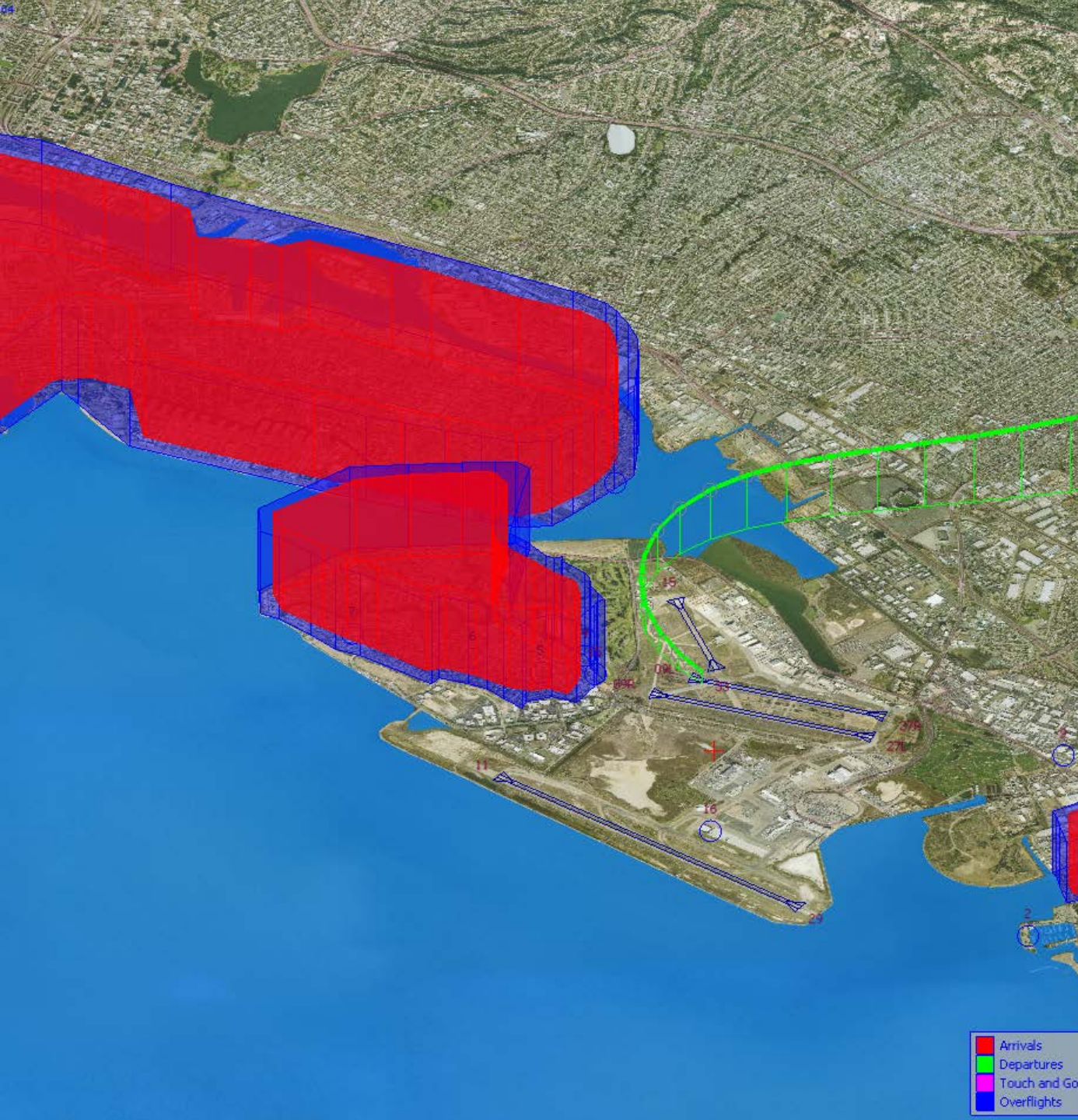
2012Q1
98% Compliance
(820 departures)

2011Q1
98% Compliance
(1,028 departures)

North Field Quiet Hours NAP

2012Q1
84% Compliance
(407 departures)

2011Q1
95% Compliance
(567 departures)



RWY 29 Bay Farm Right Turn NAP

2012Q1
100% Compliance
(13,762 departures)

2011Q1
100% Compliance
(12,148 departures)

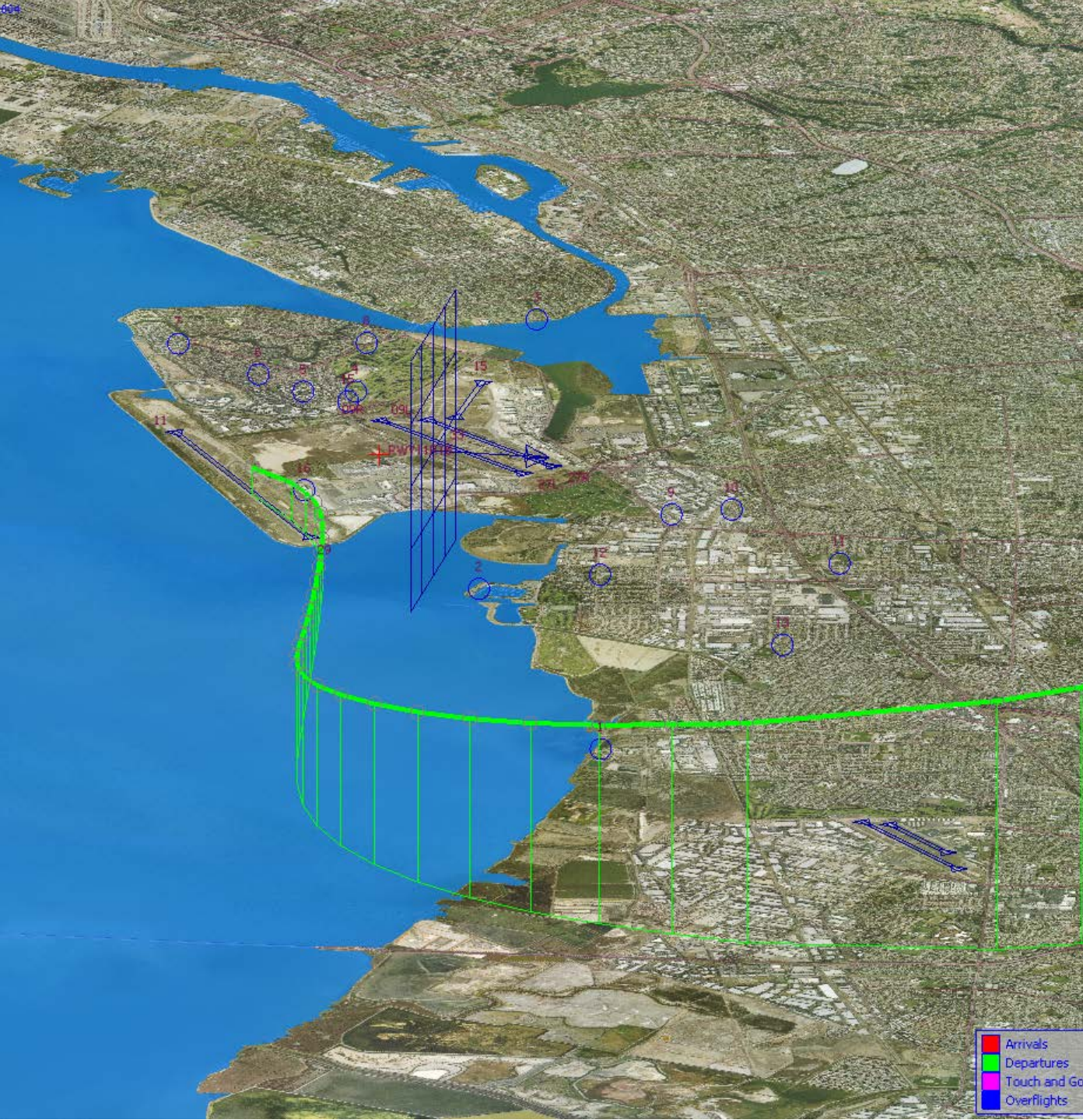
2012Q1
99% Compliance
(2,519 departures)

2011Q1
99% Compliance
(1,959 departures)

Runway 11 Night Departure NAP

2012Q1
97% Compliance
(145 departures)

2011Q1
94% Compliance
(239 departures)



Operation Details	
Aircraft ID:	SWA771
Tail Number:	
Beacon Code:	1156
AC Type:	B737
Operation Type:	Departure
Runway:	29
Origin:	OAK
Destination:	BOI
Altitude (ft):	4833
Ground Speed (kt):	231.3
Date/Time:	11/28/2011 10:37:46

Runway 29 East Turn NAP

2012Q1
98% Compliance
(3,454 departures)

2011Q1
98% Compliance
(3,322 departures)

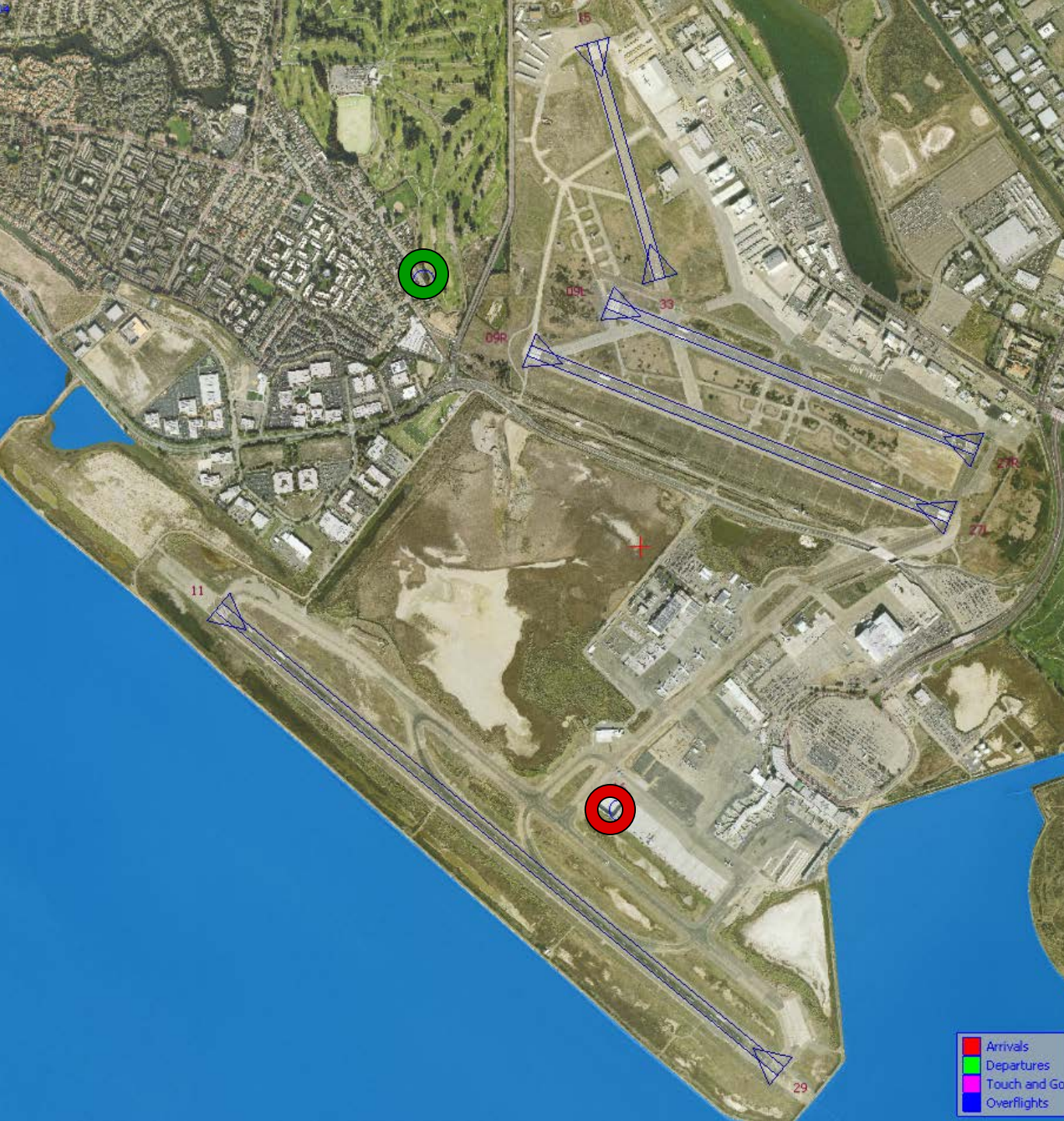


Operation Details	
Aircraft ID:	SWA273
Tail Number:	
Beacon Code:	6675
AC Type:	B737
Operation Type:	Arrival
Runway:	29
Origin:	GEG
Destination:	OAK
Altitude (ft):	3251
Ground Speed (kt):	159.4
Date/Time:	4/18/2012 19:58:23

**100 Degree Radial
At 3,000 ft. NAP**

**2012Q1
92% Compliance
(2,220 landings)**

**2011Q1
92% Compliance
(2,171 landings)**



Engine Run-up NAP

2012Q1
100% Compliance
(13 engine run-ups)*

2011Q1
100% Compliance
(11 engine run-ups)

***Only above idle-power run-ups recorded.**



Table 1. North Field Night Aircraft Departure SEL Noise Measurements
Total Aircraft Departures = 407

First Quarter 2012 (10:00 p.m. to 6:00 a.m.)

NMT Number	Aircraft Noise Events Below SEL 80 dBA	Aircraft Noise Events SEL 80 - 84.9 dBA			Aircraft Noise Events SEL 85 - 89.9 dBA			Aircraft Noise Events SEL ≥ 90 dBA			Total Aircraft Noise Events
		Amount	Nightly Average	As Percentage of Departures	Amount	Nightly Average	As Percentage of Departures	Amount	Nightly Average	As Percentage of Departures	
1	9	5	0.1	0.9%	5	0.1	0.9%	0	0.0	0.0%	19
2	124	18	0.2	3.2%	2	0.0	0.4%	0	0.0	0.0%	144
3	50	5	0.1	0.9%	0	0.0	0.0%	1	0.0	0.2%	56
4	124	39	0.4	6.9%	17	0.2	3.0%	12	0.1	2.1%	192
5	66	14	0.2	2.5%	3	0.0	0.5%	1	0.0	0.2%	84
6	21	6	0.1	1.1%	1	0.0	0.2%	1	0.0	0.2%	29
7	13	2	0.0	0.4%	2	0.0	0.4%	0	0.0	0.0%	17
8	37	16	0.2	2.8%	12	0.1	2.1%	0	0.0	0.0%	65
9	60	30	0.3	5.3%	19	0.2	3.4%	3	0.0	0.5%	112
10	124	56	0.6	9.9%	8	0.1	1.4%	0	0.0	0.0%	188
11	7	5	0.1	0.9%	1	0.0	0.2%	0	0.0	0.0%	13
12	127	18	0.2	3.2%	7	0.1	1.2%	0	0.0	0.0%	152
13	10	0	0.0	0.0%	0	0.0	0.0%	0	0.0	0.0%	10
14	7	1	0.0	0.2%	0	0.0	0.0%	0	0.0	0.0%	8
All NMTs	779	215	2	0	77	1	0	18	0	0	1089

Table 2. Aircraft SEL Noise Measurements in Alameda - Total Aircraft Departures = 168

First Quarter 2012 (10:00 p.m. to 6:00 a.m.)											
NMT Number	Aircraft Noise Events Below SEL 80 dBA	Aircraft Noise Events SEL 80 - 84.9 dBA			Aircraft Noise Events SEL 85 - 89.9 dBA			Aircraft Noise Events SEL ≥ 90 dBA			Total Aircraft Noise Events
		Amount	Nightly Average	As Percentage of Departures	Amount	Nightly Average	As Percentage of Departures	Amount	Nightly Average	As Percentage of Departures	
3	50	5	0.1	2.1%	0	0.0	0.0%	1	0.0	0.4%	56
4	124	39	0.4	16.3%	17	0.2	7.1%	12	0.1	5.0%	192
5	66	14	0.2	5.9%	3	0.0	1.3%	1	0.0	0.4%	84
6	21	6	0.1	2.5%	1	0.0	0.4%	1	0.0	0.4%	29
7	13	2	0.0	0.8%	2	0.0	0.8%	0	0.0	0.0%	17
8	37	16	0.2	6.7%	12	0.1	5.0%	0	0.0	0.0%	65
Total	311	82	0.9		35	0.4		15	0.2		443

Table 3. Aircraft SEL Noise Measurements in San Leandro - Total Aircraft Departures = 239

First Quarter 2012 (10:00 p.m. to 6:00 a.m.)											
NMT Number	Aircraft Noise Events Below SEL 80 dBA	Aircraft Noise Events SEL 80 - 84.9 dBA			Aircraft Noise Events SEL 85 - 89.9 dBA			Aircraft Noise Events SEL ≥ 90 dBA			Total Aircraft Noise Events
		Amount	Nightly Average	As Percentage of Departures	Amount	Nightly Average	As Percentage of Departures	Amount	Nightly Average	As Percentage of Departures	
2	124	18	0.2	5.5%	2	0.0	0.6%	0	0.0	0.0%	144
9	60	30	0.3	9.1%	19	0.2	5.8%	3	0.0	0.9%	112
10	124	56	0.6	17.1%	8	0.1	2.4%	0	0.0	0.0%	188
11	7	5	0.1	1.5%	1	0.0	0.3%	0	0.0	0.0%	13
12	127	18	0.2	5.5%	7	0.1	2.1%	0	0.0	0.0%	152
13	10	0	0.0	0.0%	0	0.0	0.0%	0	0.0	0.0%	10
14	7	1	0.0	0.3%	0	0.0	0.0%	0	0.0	0.0%	8
Total	459	128	1.4		37	0.4		3	0.0		627

**Rolling Take-off Night Departure Procedure (1:00 to 5:00 AM)
First Quarter 2012, NMT 2**

	Aircraft Departures	Recorded Noise Events (a)	Lmax Average	SEL Average	Avg. Duration (seconds)
Baseline (November 2002) [A]					
B727	104	101	76	87	44
DC10/MD10	87	32	69	78	22
MD11	32	13	70	79	24
A306	67	21	67	77	25
First Quarter 2012 [B]					
	Total [X]	Est. Avg. Monthly [X/3]			
B727	-	-	-	na	na
DC10/MD10	135	45	88	67	77
MD11	193	64	137	68	78
A306	194	65	83	66	75
B757	54	18	16	66	75
Difference [A-B]					
B727		-104	na	na	na
DC10/MD10		-42	56	-2	-1
MD11		32	124	-2	-1
A306		-2	62	-1	-2

(a) For the current calendar quarter reported, ANOMS does not correlate all departures to their respective noise events; that is most, but not all, aircraft back-blast noise events are effectively correlated as the program software algorithms may misidentify an aircraft noise event.

Source: ANOMS (Airport Noise and Operations Monitoring System)

Rolling Take-off Night Departure Procedure (1:00 to 5:00 AM)
First Quarter 2011, RMT 2

	Aircraft Departures	Recorded Noise Events (a)	Lmax Average	SEL Average	Avg. Duration (seconds)
Baseline (November 2002) [A]					
B727	104	101	76	87	44
DC10/MD10	87	32	69	78	22
MD11	32	13	70	79	24
A306	67	21	67	77	25
1st Quarter January through March 2011) [B]					
	Total [X]	Est. Avg. Monthly [X/3]			
B727	1	0	1	74	85
DC10/MD10	117	39	66	68	78
MD11	183	61	121	69	79
A306	171	57	74	67	76
Difference [A-B]					
B727		-104	-100	-2	0
DC10/MD10		-48	34	-1	0
MD11		29	108	-1	-3
A306		-10	53	0	-6

