

# **NOISE FORUM SUMMARY**

**North/South Field Working Groups**

## **NOISE ABATEMENT REPORT**

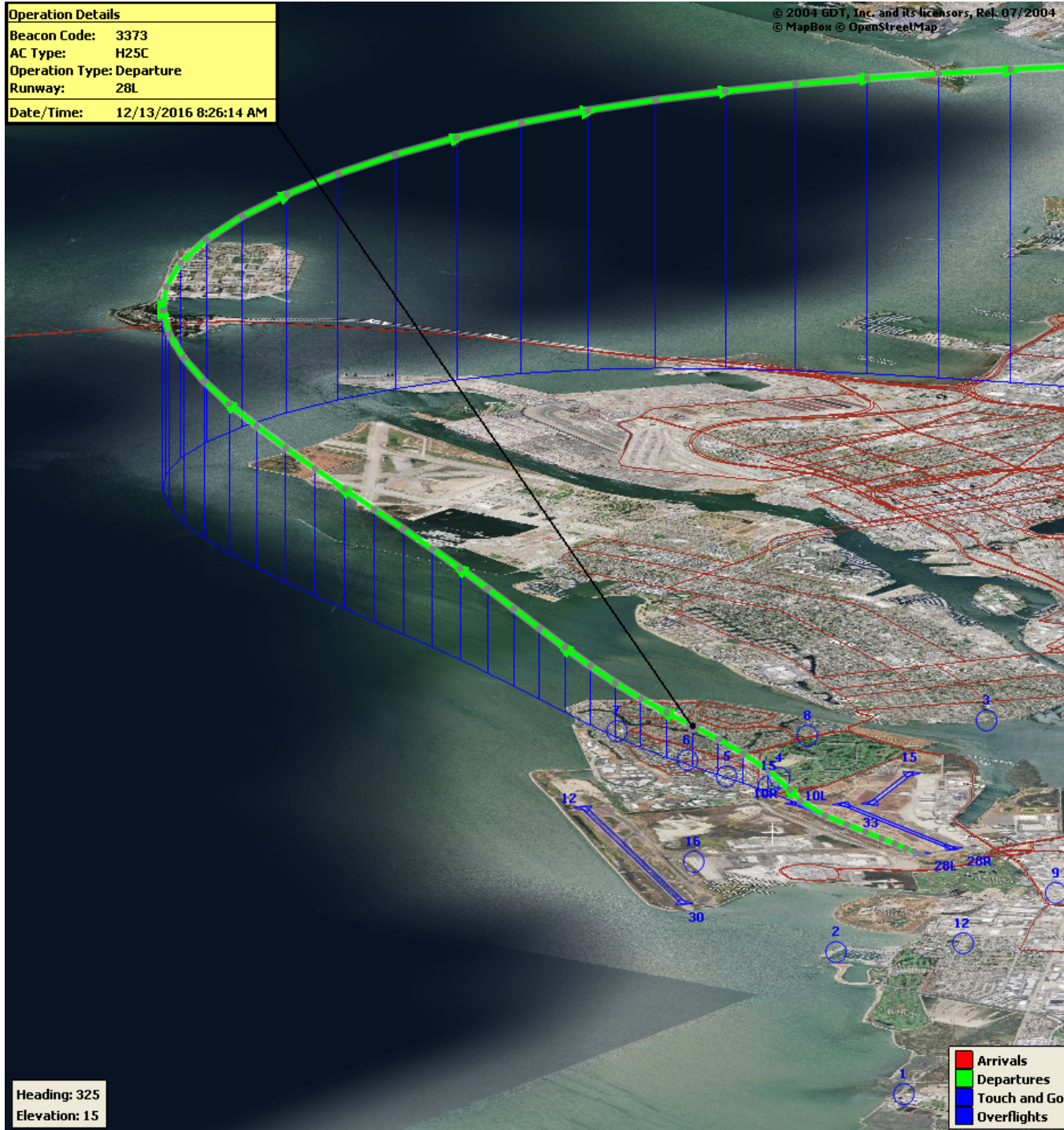
**FOURTH QUARTER 2017**

Compliance Monitoring Quarterly Summary Comparison Fourth Quarter 2017				
	2016Q4		2017Q4	
	Compl.	N/C	Compl.	N/C
Runway 28R/L Jet Departure Compliance	95%	5%	94%	6%
Total Airport-wide Corporate Jet Departures	2,747	158	2,856	178
Runway 10R/L Jet Landing Compliance	73%	27%	76%	24%
Total Southeast Plan Corporate Jet Landings	231	84	97	30
North Field VFR Departure Compliance	94%	6%	94%	6%
Total Runways 28R/L & 33 Departures	376	22	369	25
North Field Quiet Hours Compliance	69%	31%	82%	18%
Total North Field Quiet Hours Departures	130	59	265	60
Runway 30 BFI Right Turn Departure Compliance	100%	0%	100%	0%
Total Runway 30 Turbojet Departures	16,627	5	18,845	1
Night Time Departure Compliance	98%	2%	99%	1%
Total Runway 30 Night Turbojet Departures	3,089	49	3,638	50
Runway 12 Night Departure Compliance	88%	12%	86%	14%
Total Runway 12 Night Turbojet Departures	161	22	131	22
Runway 30 East Turn Departure Compliance	100%	0%	100%	0%
Total Runway 30 East Turn Departures	5,174	0	5,764	8
100 Degree Radial Turbojet Landing Compliance	92%	8%	99%	1%
Total 100 Degree Radial Turbojet Landings	2,154	186	3,028	46
Engine Runup Program Compliance	100%	0%	100%	0%
Total Evening and Nighttime Engine Runups	6	0	7	0
Note: N/C means non-compliant. Percentage values are rounded out.				

Link to full report: [http://flyquietoak.com/pages/reports/quarterly\\_noise\\_compliance.html](http://flyquietoak.com/pages/reports/quarterly_noise_compliance.html)

Operation Details	
Beacon Code:	3373
AC Type:	H25C
Operation Type:	Departure
Runway:	28L
Date/Time:	12/13/2016 8:26:14 AM

© 2004 GDT, Inc. and its licensors, Rel. 07/2004  
© MapBox © OpenStreetMap



Heading: 325  
Elevation: 15

- Arrivals
- Departures
- Touch and Go
- Overflights

## Runway 28R/L Jet Departure NAP

**2017Q4**  
**94% Compliance**  
**(3,034 total departures)**  
**(178 non-compliant)**

**2016Q4**  
**95% Compliance**  
**(2,905 total departures)**  
**(158 non-compliant)**



Operation Details  
Beacon Code: 4564  
AC Type: C550  
Operation Type: Arrival  
Runway: 10R  
Date/Time: 12/15/2016 8:15:42 PM

© 2004 GDI, Inc. and its licensors. Rel. 07/2004  
© MapBox © OpenStreetMap



## Runway 10R/L Jet Landing NAP

**2017Q4**

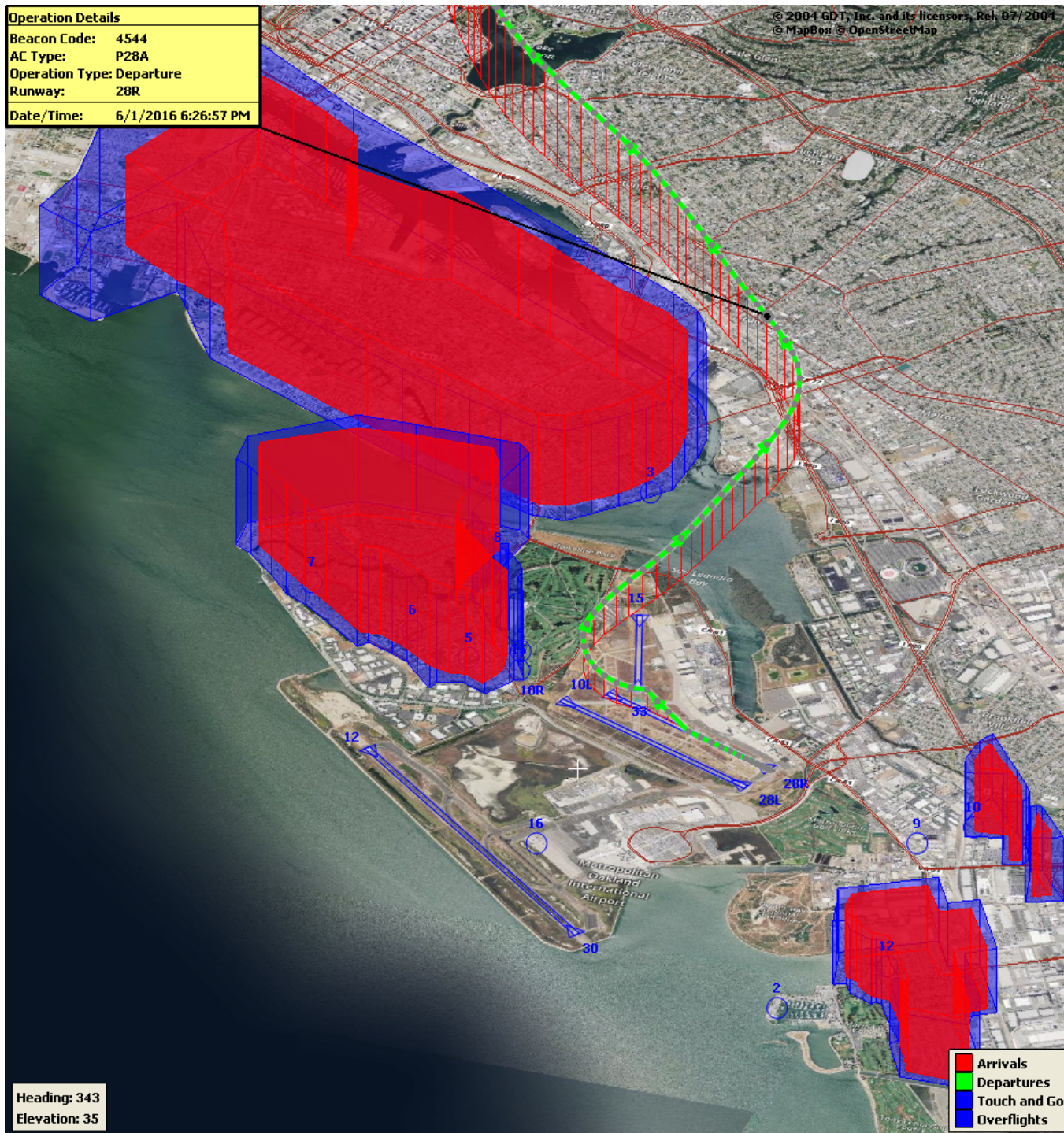
**76% Compliance**  
**(127 total landings)**  
**(30 non-compliant)**

**2016Q4**

**73% Compliance**  
**(315 total landings)**  
**(84 non-compliant)**



Operation Details  
Beacon Code: 4544  
AC Type: P28A  
Operation Type: Departure  
Runway: 28R  
Date/Time: 6/1/2016 6:26:57 PM



## VFR Aircraft Departure NAP

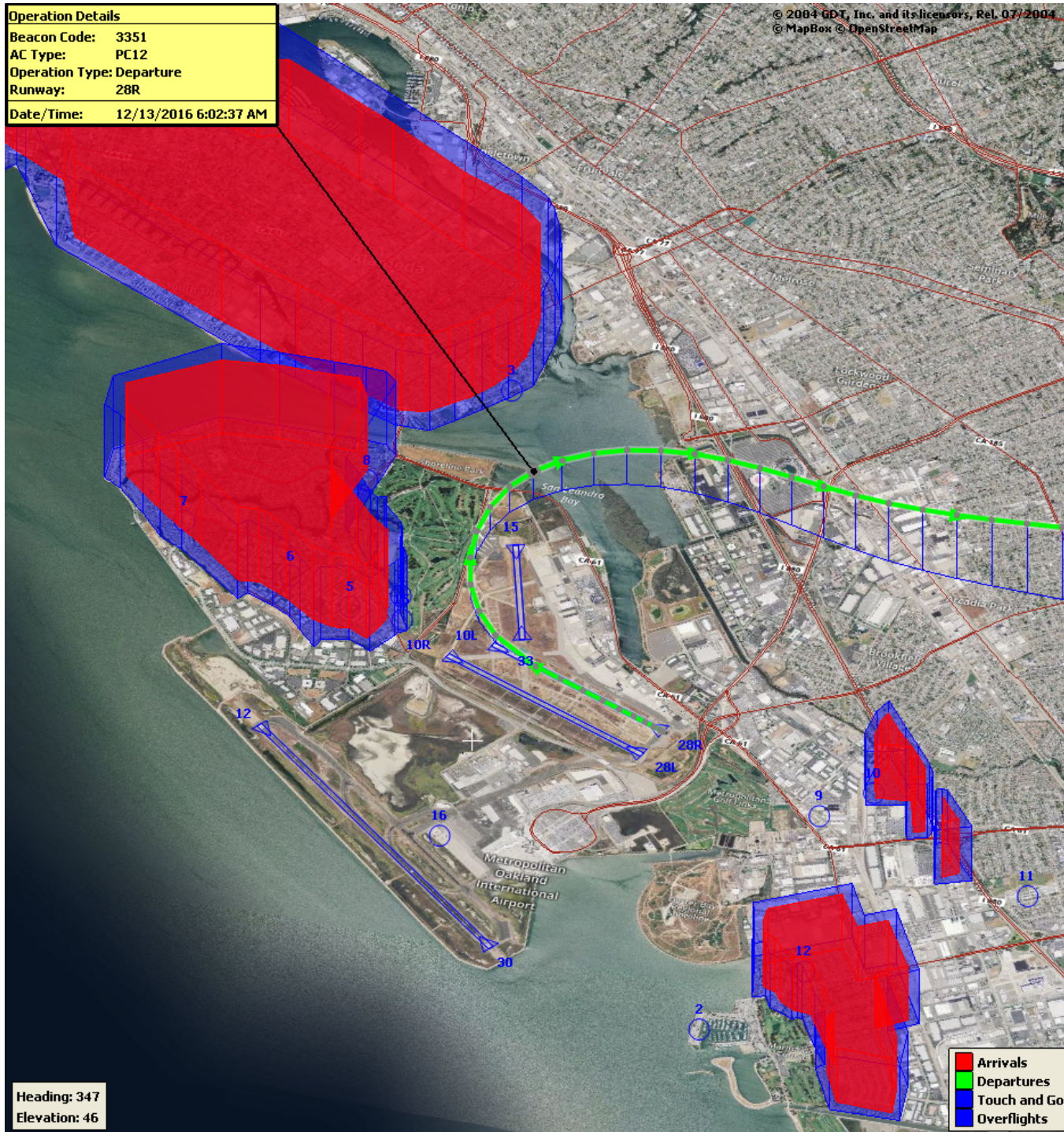
**2017Q4**  
**94% Compliance**  
**(394 total departures)**  
**(25 non-compliant)**

**2016Q4**  
**94% Compliance**  
**(398 total departures)**  
**(22 non-compliant)**



**Operation Details**  
 Beacon Code: 3351  
 AC Type: PC12  
 Operation Type: Departure  
 Runway: 28R  
 Date/Time: 12/13/2016 6:02:37 AM

© 2004 GDT, Inc. and its licensors, Rel. 07/2004  
 © MapBox © OpenStreetMap

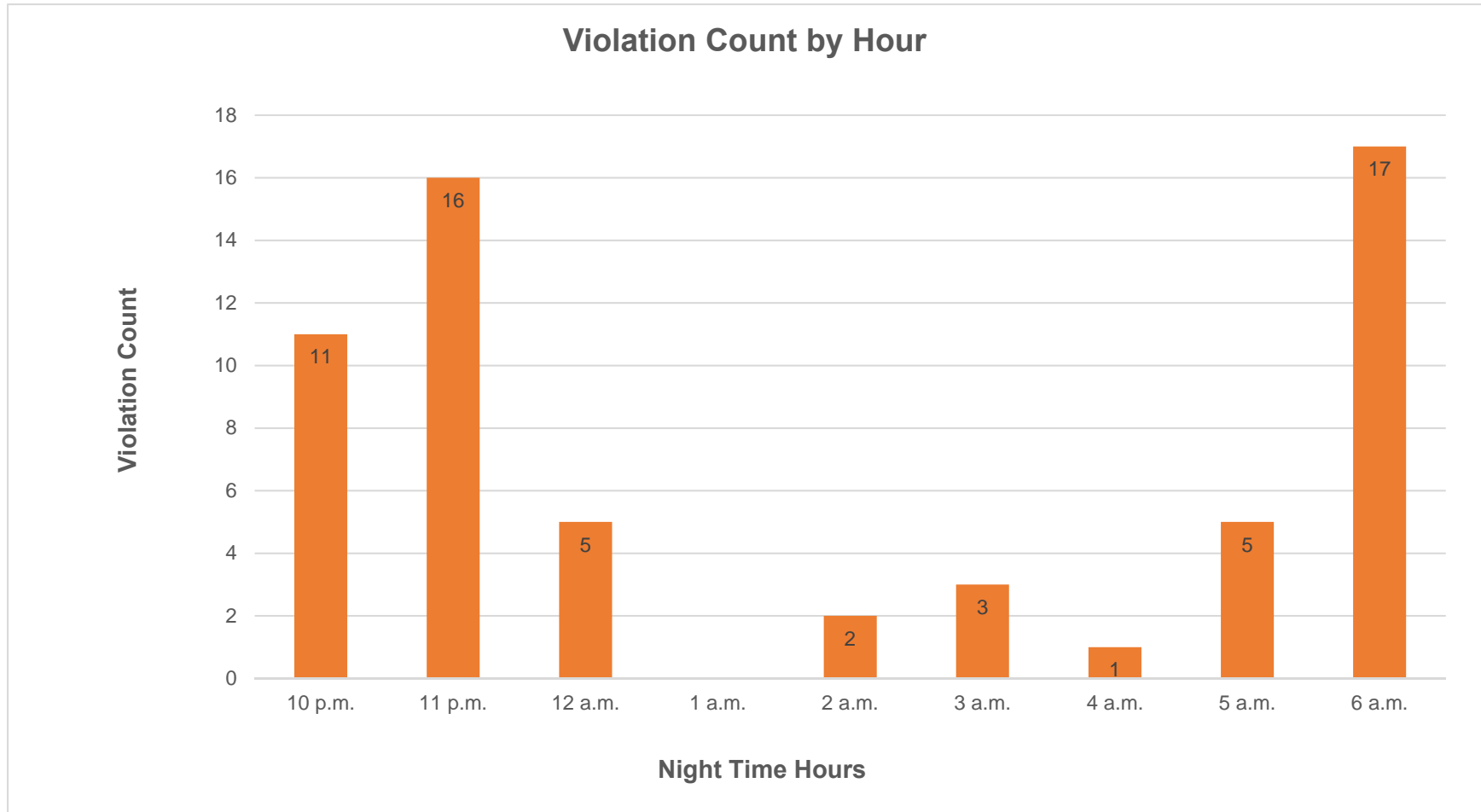


## North Field Quiet Hours NAP

**2017Q4**  
**82% Compliance**  
**(325 total departures)**  
**(60 non-compliant)**

**2016Q4**  
**69% Compliance**  
**(189 total departures)**  
**(59 non-compliant)**

# North Field Quiet Hours NAP Non-Compliant by Hour







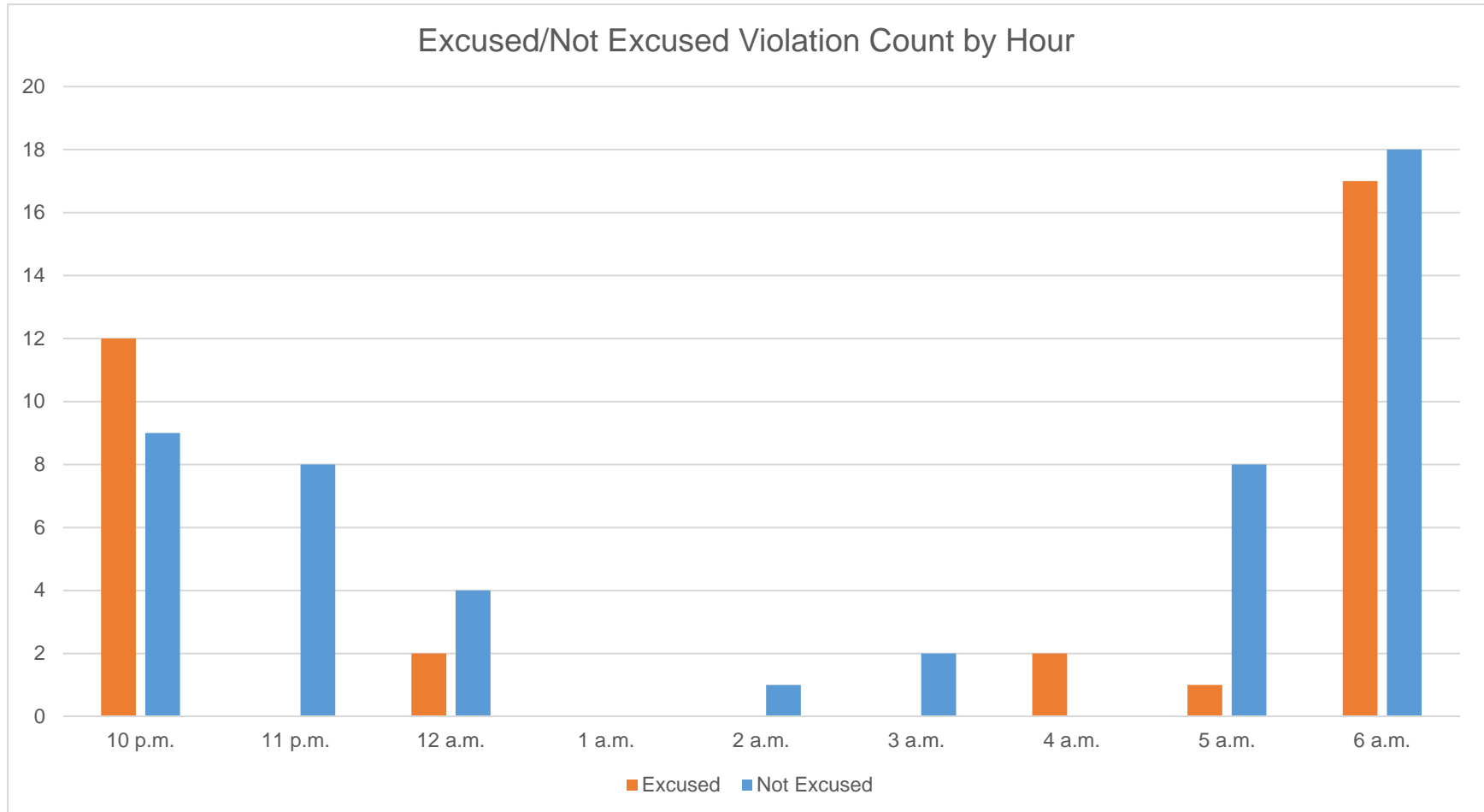
## Night Time Departure NAP

**2017Q4**  
**99% Compliance**  
**(3,688 total departures)**  
**(50 non-compliant)**

\*REBAS Gate non-compliant = 48

**2016Q4\***  
**98% Compliance**  
**(3,138 total departures)**  
**(49 non-compliant)**

# Night Time NAP Non-Compliant Count by Hour

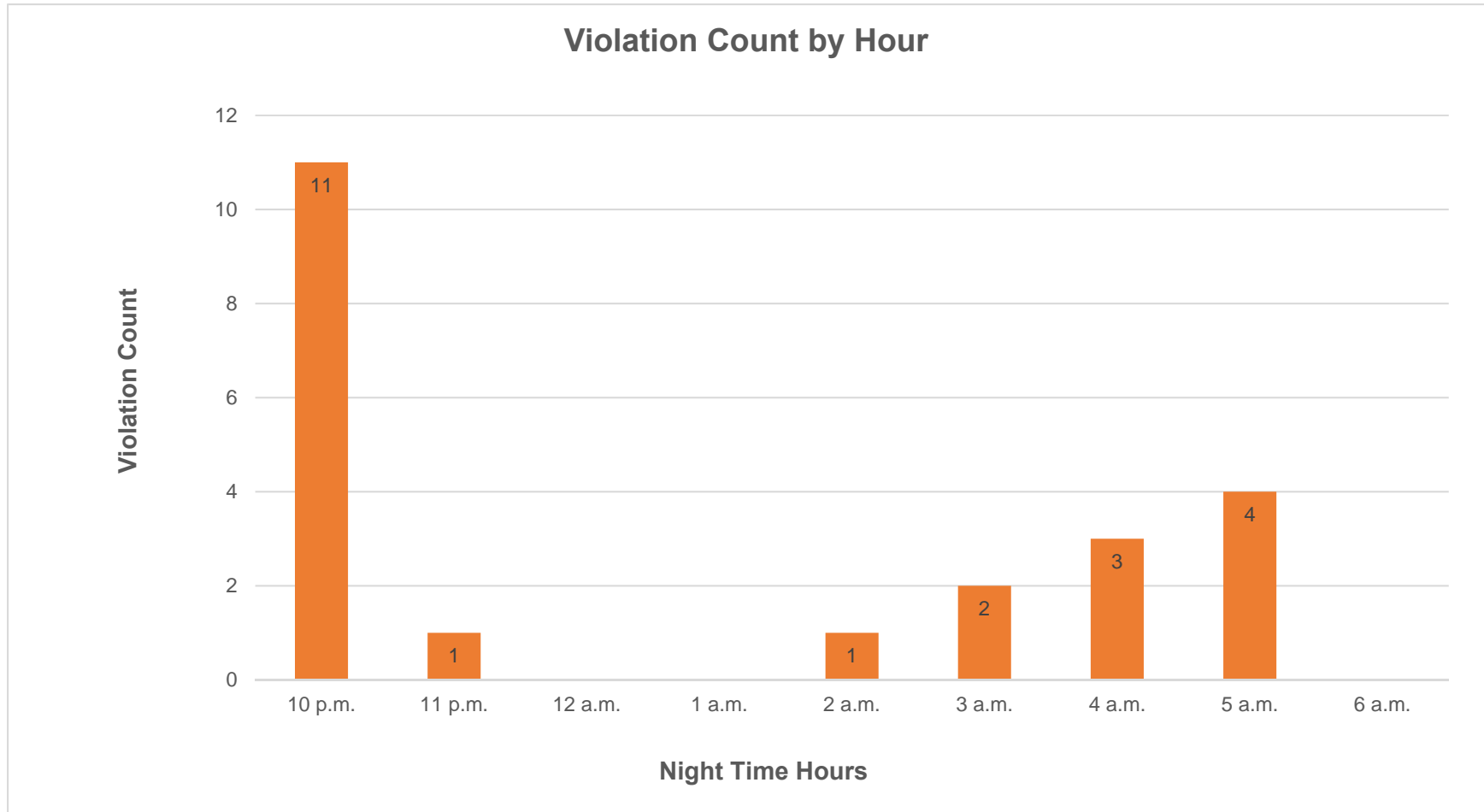








# Runway 12 Night Departure Non-Compliant Count by Hour





## Runway 30 Bay Farm Right Turn NAP

**2017Q4**  
**100% Compliance**  
**(18,846 total departures)**  
**(1 non-compliant)**

**2016Q4**  
**100% Compliance**  
**(16,632 total departures)**  
**(5 non-compliant)**



**Operation Details**  
 Beacon Code: 3257  
 AC Type: B737  
 Operation Type: Departure  
 Runway: 30  
 Date/Time: 12/15/2016 9:42:35 PM



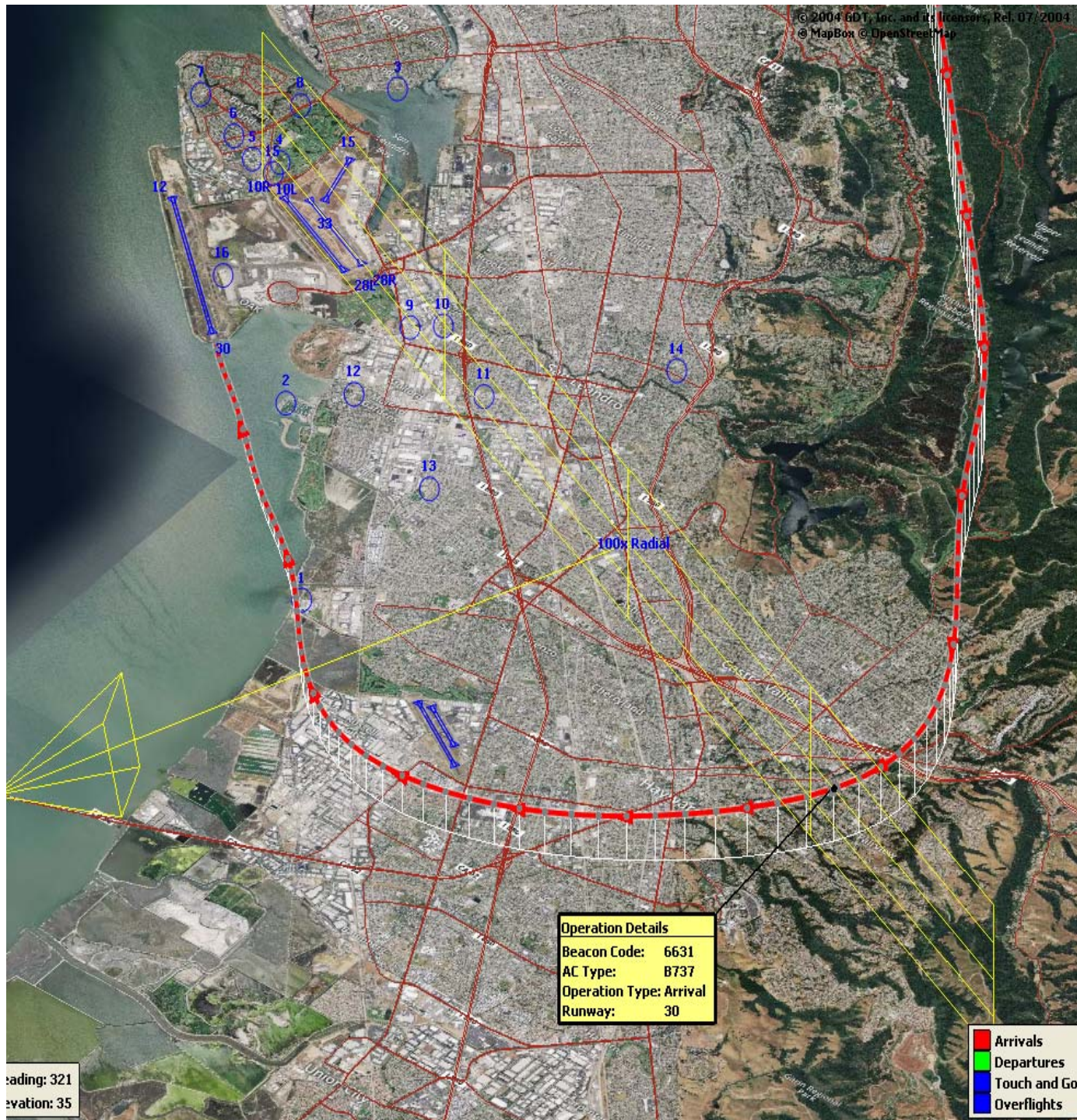
## Runway 30 East Turn NAP

**2017Q4**  
**100% Compliance**  
**(5,772 total departures)**  
**(8 non-compliant)**

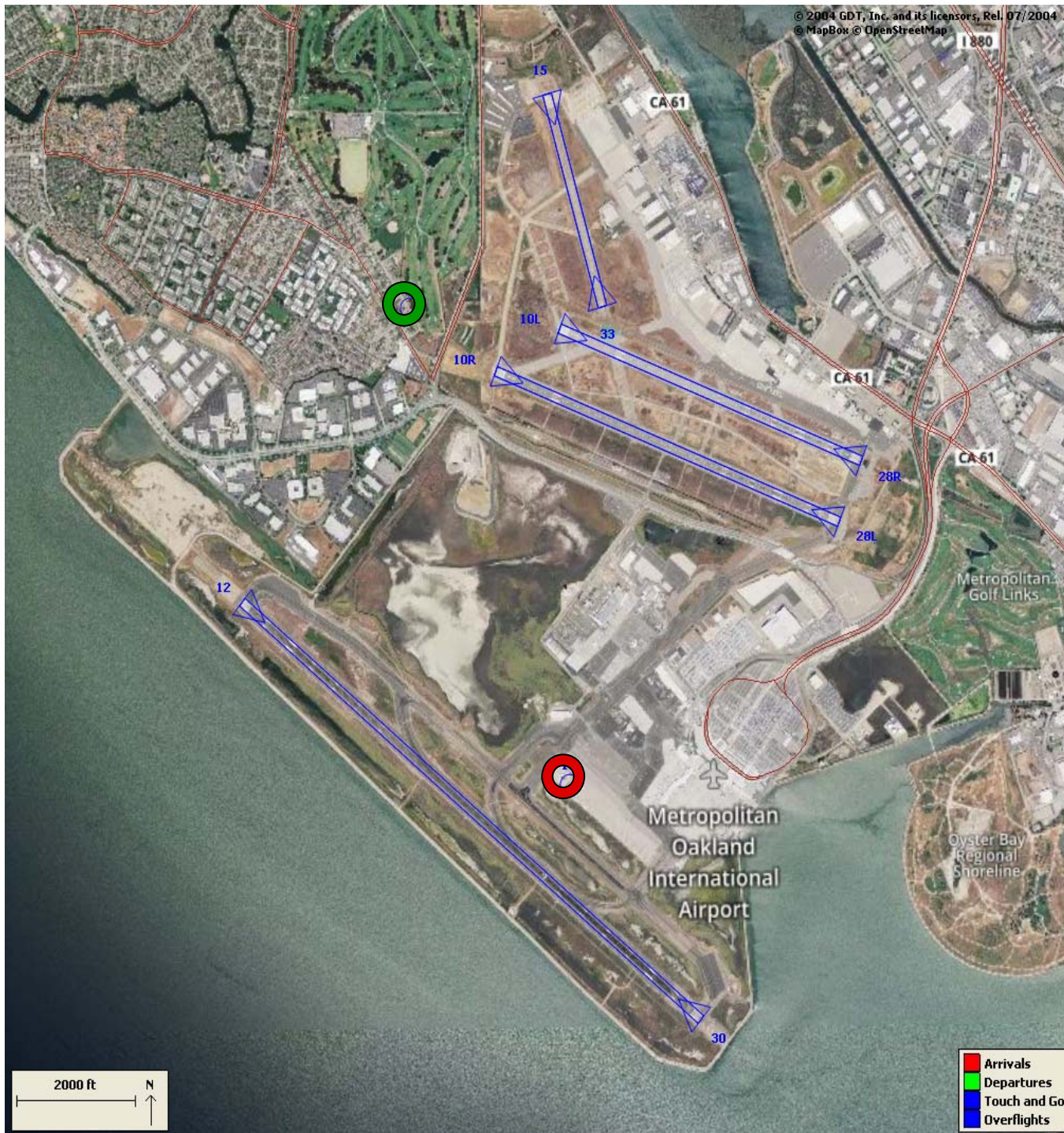
\* Excused Departures = 112

**2016Q4**  
**100% Compliance**  
**(5,174 total departures)**  
**(0 non-compliant)**









## Engine Run-up NAP

**2017Q4**

**100% Compliance  
(7 engine run-ups)\*  
(0 non-compliant)**

**2016Q4**

**100% Compliance  
(6 engine run-ups)  
(0 non-compliant)**

**\*Only above idle-power run-ups  
recorded.**

**Table 1. North Field Night Aircraft Departure SEL Noise Measurements**  
**Total Aircraft Departures = 172**

**Fourth Quarter 2017 (10:00 p.m. to 7:00 a.m.)**

NMT Number	Aircraft Noise Events Below SEL 80 dBA	Aircraft Noise Events SEL 80 - 84.9 dBA			Aircraft Noise Events SEL 85 - 89.9 dBA			Aircraft Noise Events SEL ≥ 90 dBA			Total Aircraft Noise Events
		Amount	Nightly Average	As Percentage of Departures	Amount	Nightly Average	As Percentage of Departures	Amount	Nightly Average	As Percentage of Departures	
1	1	6	0.1	1.1%	1	0.0	0.2%	0	0.0	0.0%	8
2	43	3	0.0	0.5%	2	0.0	0.4%	0	0.0	0.0%	48
3	44	2	0.0	0.4%	0	0.0	0.0%	0	0.0	0.0%	46
4	40	35	0.4	6.2%	29	0.3	5.1%	48	0.5	8.5%	152
5	36	25	0.3	4.4%	13	0.1	2.3%	54	0.6	9.5%	128
6	18	19	0.2	3.4%	41	0.5	7.2%	62	0.7	10.9%	140
7	19	17	0.2	3.0%	47	0.5	8.3%	2	0.0	0.4%	85
8	31	33	0.4	5.8%	3	0.0	0.5%	0	0.0	0.0%	67
9	8	4	0.0	0.7%	6	0.1	1.1%	0	0.0	0.0%	18
10	31	13	0.1	2.3%	1	0.0	0.2%	0	0.0	0.0%	45
11	1	1	0.0	0.2%	0	0.0	0.0%	0	0.0	0.0%	2
12	10	6	0.1	1.1%	3	0.0	0.5%	0	0.0	0.0%	19
13	2	2	0.0	0.4%	0	0.0	0.0%	0	0.0	0.0%	4
14	9	1	0.0	0.2%	0	0.0	0.0%	0	0.0	0.0%	10
<b>All NMTs</b>	293	167	2	0	146	2	0	166	2	0	772

\*SEL > 90 dBA increase due to commercial jet departures from the North Field during Monday Morning closure. Runway Overlay Project



**Table 2. Aircraft SEL Noise Measurements in Alameda - Total Aircraft Departures = 155**

Fourth Quarter 2017 (10:00 p.m. to 7:00 a.m.)											
NMT Number	Aircraft Noise Events Below SEL 80 dBA	Aircraft Noise Events SEL 80 - 84.9 dBA			Aircraft Noise Events SEL 85 - 89.9 dBA			Aircraft Noise Events SEL ≥ 90 dBA			Total Aircraft Noise Events
		Amount	Nightly Average	As Percentage of Departures	Amount	Nightly Average	As Percentage of Departures	Amount	Nightly Average	As Percentage of Departures	
3	44	2	0.0	0.8%	0	0.0	0.0%	0	0.0	0.0%	46
4	40	35	0.4	14.6%	29	0.3	12.1%	48	0.5	20.1%	152
5	36	25	0.3	10.5%	13	0.1	5.4%	54	0.6	22.6%	128
6	18	19	0.2	7.9%	41	0.5	17.2%	62	0.7	25.9%	140
7	19	17	0.2	7.1%	47	0.5	19.7%	2	0.0	0.8%	85
8	31	33	0.4	13.8%	3	0.0	1.3%	0	0.0	0.0%	67
<b>Total</b>	<b>188</b>	<b>131</b>	<b>1.5</b>		<b>133</b>	<b>1.5</b>		<b>166</b>	<b>1.8</b>		<b>618</b>

**Table 3. Aircraft SEL Noise Measurements in San Leandro - Total Aircraft Departures = 17**

Fourth Quarter 2017 (10:00 p.m. to 7:00 a.m.)											
NMT Number	Aircraft Noise Events Below SEL 80 dBA	Aircraft Noise Events SEL 80 - 84.9 dBA			Aircraft Noise Events SEL 85 - 89.9 dBA			Aircraft Noise Events SEL ≥ 90 dBA			Total Aircraft Noise Events
		Amount	Nightly Average	As Percentage of Departures	Amount	Nightly Average	As Percentage of Departures	Amount	Nightly Average	As Percentage of Departures	
2	43	3	0.0	0.9%	2	0.0	0.6%	0	0.0	0.0%	48
9	8	4	0.0	1.2%	6	0.1	1.8%	0	0.0	0.0%	18
10	31	13	0.1	4.0%	1	0.0	0.3%	0	0.0	0.0%	45
11	1	1	0.0	0.3%	0	0.0	0.0%	0	0.0	0.0%	2
12	10	6	0.1	1.8%	3	0.0	0.9%	0	0.0	0.0%	19
13	2	2	0.0	0.6%	0	0.0	0.0%	0	0.0	0.0%	4
14	9	1	0.0	0.3%	0	0.0	0.0%	0	0.0	0.0%	10
<b>Total</b>	<b>104</b>	<b>30</b>	<b>0.3</b>		<b>12</b>	<b>0.1</b>		<b>0</b>	<b>0.0</b>		<b>146</b>





## Rolling Take-off Night Departure Procedure (1:00 to 5:00 AM) Fourth Quarter 2016, NMT 2

	Aircraft Departures	Recorded Noise Events (a)	Lmax Average	SEL Average	Avg. Duration (seconds)
Baseline (November 2002) [A]					
DC10/MD10	87	32	69	78	22
MD11	32	13	70	79	24
A306	67	21	67	77	25
Fourth Quarter 2016 [B]					
	Total [X]	Est. Avg. Monthly [X/3]			
B763	56	19	22	65	14
DC10/MD10	75	25	37	66	18
MD11	216	72	145	67	20
A306	92	31	43	66	17
B757	177	59	69	66	16
B77L	67	22	30	65	13
Difference [A-B]					
DC10/MD10		-62	5	-3	-4
MD11		40	132	-3	-4
A306		-36	22	-1	-8

(a) For the current calendar quarter reported, ANOMS does not correlate all departures to their respective noise events; that is most, but not all, aircraft back-blast noise events are effectively correlated as the program software algorithms may misidentify an aircraft noise event.  
Source: ANOMS (Airport Noise and Operations Monitoring System)

**Oakland International Airport  
Noise Complaint Summary  
October 2017**

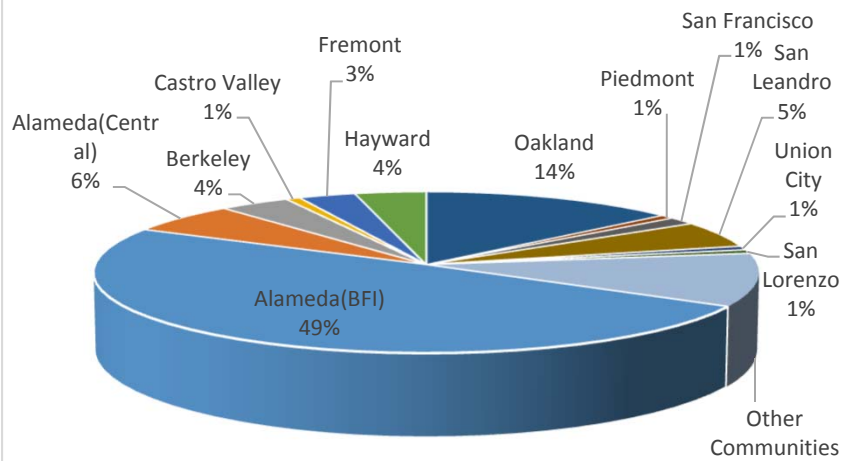
Community	Callers	Complaints
Alameda(BFI)	65	346
Alameda(Central)	8	188
Berkeley	5	5
Castro Valley	1	1
Fremont	4	11
Hayw ard	5	46
Oakland	18	1156
Piedmont	1	1
San Francisco	2	96
San Leandro	7	24
Union City	1	1
San Lorenzo	1	1
Other Communities	14	450
<b>Total</b>	<b>132</b>	<b>2326</b>
<b>Complaints by Time of Day</b>		
Day ( 0700 - 1900 )		995
Evening ( 1900 - 2200 )		247
Night ( 2200 - 0700 )		1084
<b>Complaints by Type of Operation</b>		
Arrivals		1289
Departures		1022
Over-flights		8
Touch & Go		7
Not Linked to an Operation		0
<b>Complaints by Type of Aircraft</b>		
Business Jet		191
Helicopter		19
Jet		1737
Military		10
Not Reported		0
Other		16
Propeller		162
Turbo-prop		191



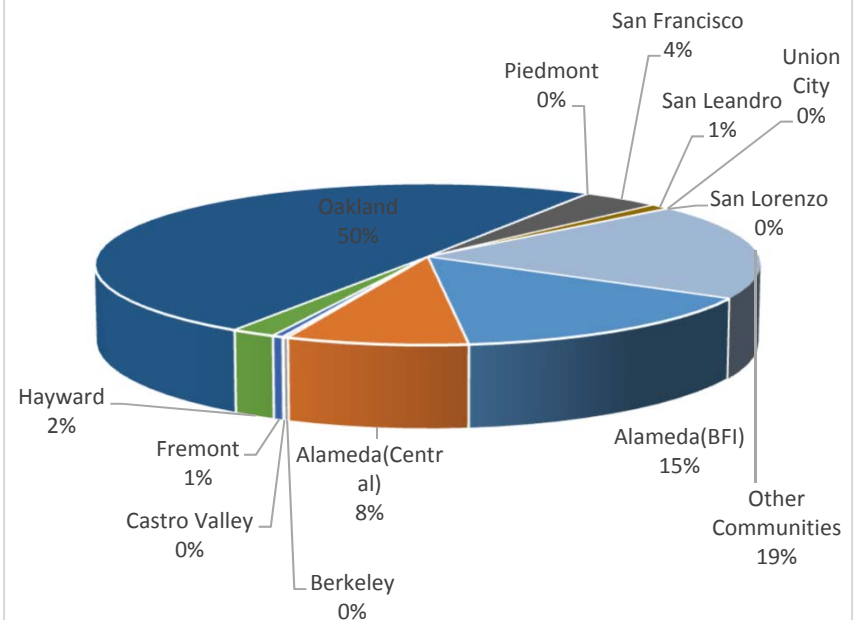
# Noise Complaint Charts

## October 2017

### Noise Complaints Summary by Number of Callers



### Noise Complaints Summary by Number of Complaints



**Oakland International Airport  
Noise Complaint Summary  
November 2017**

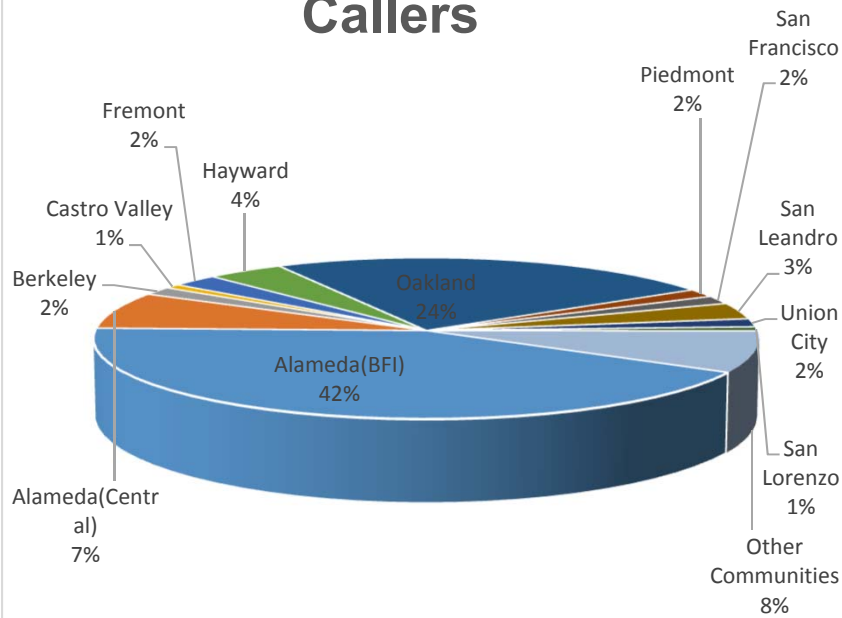
Community	Callers	Complaints
Alameda(BFI)	51	477
Alameda(Central)	9	109
Berkeley	2	3
Castro Valley	1	1
Fremont	3	9
Hayw ard	5	184
Oakland	29	1380
Piedmont	2	9
San Francisco	2	160
San Leandro	4	14
Union City	2	2
San Lorenzo	1	6
Other Communities	10	488
Total	121	2842
Complaints by Time of Day		
Day ( 0700 - 1900 )	1776	
Evening ( 1900 - 2200 )	380	
Night ( 2200 - 0700 )	686	
Complaints by Type of Operation		
Arrivals	691	
Departures	953	
Over-flights	1194	
Touch & Go	4	
Not Linked to an Operation	0	
Complaints by Type of Aircraft		
Business Jet	121	
Helicopter	25	
Jet	2338	
Military	0	
Not Reported	0	
Other	65	
Propeller	121	
Turbo-prop	172	



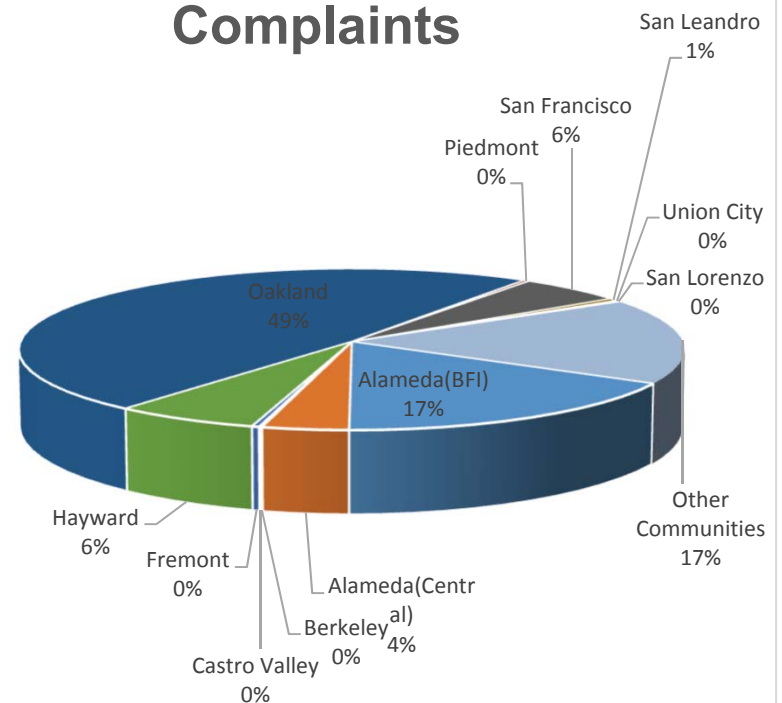
# Noise Complaint Charts

## November 2017

**Noise Complaints  
Summary by Number of  
Callers**



**Noise Complaints  
Summary by Number of  
Complaints**



**Oakland International Airport  
Noise Complaint Summary  
December 2017**

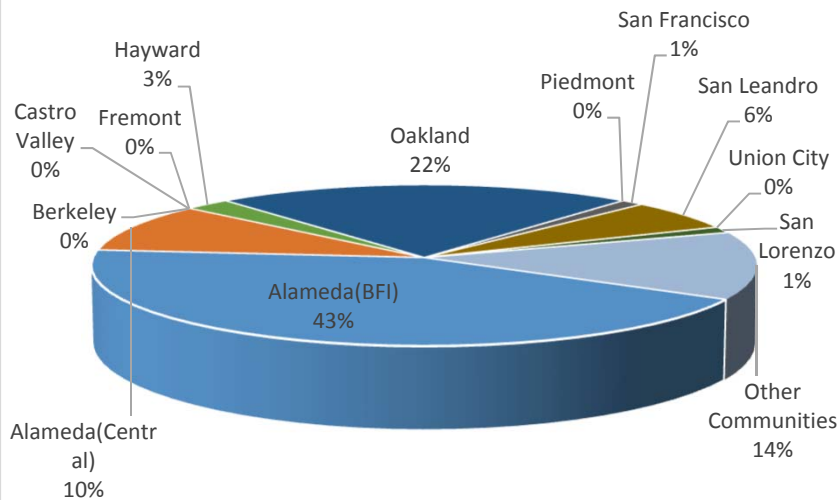
Community	Callers	Complaints
Alameda(BFI)	35	156
Alameda(Central)	8	87
Berkeley	0	0
Castro Valley	0	0
Fremont	0	0
Hayw ard	2	178
Oakland	18	1127
Piedmont	0	0
San Francisco	1	59
San Leandro	5	9
Union City	0	0
San Lorenzo	1	6
Other Communities	11	221
<b>Total</b>	<b>81</b>	<b>1843</b>
<b>Complaints by Time of Day</b>		
Day ( 0700 - 1900 )		788
Evening ( 1900 - 2200 )		450
Night ( 2200 - 0700 )		605
<b>Complaints by Type of Operation</b>		
Arrivals		1197
Departures		604
Over-flights		37
Touch & Go		5
Not Linked to an Operation		0
<b>Complaints by Type of Aircraft</b>		
Business Jet		89
Helicopter		5
Jet		1581
Military		1
Not Reported		0
Other		9
Propeller		81
Turbo-prop		77



# Noise Complaint Charts

## December 2017

**Noise Complaints  
Summary by Number of  
Callers**



**Noise Complaints  
Summary by Number of  
Complaints**

