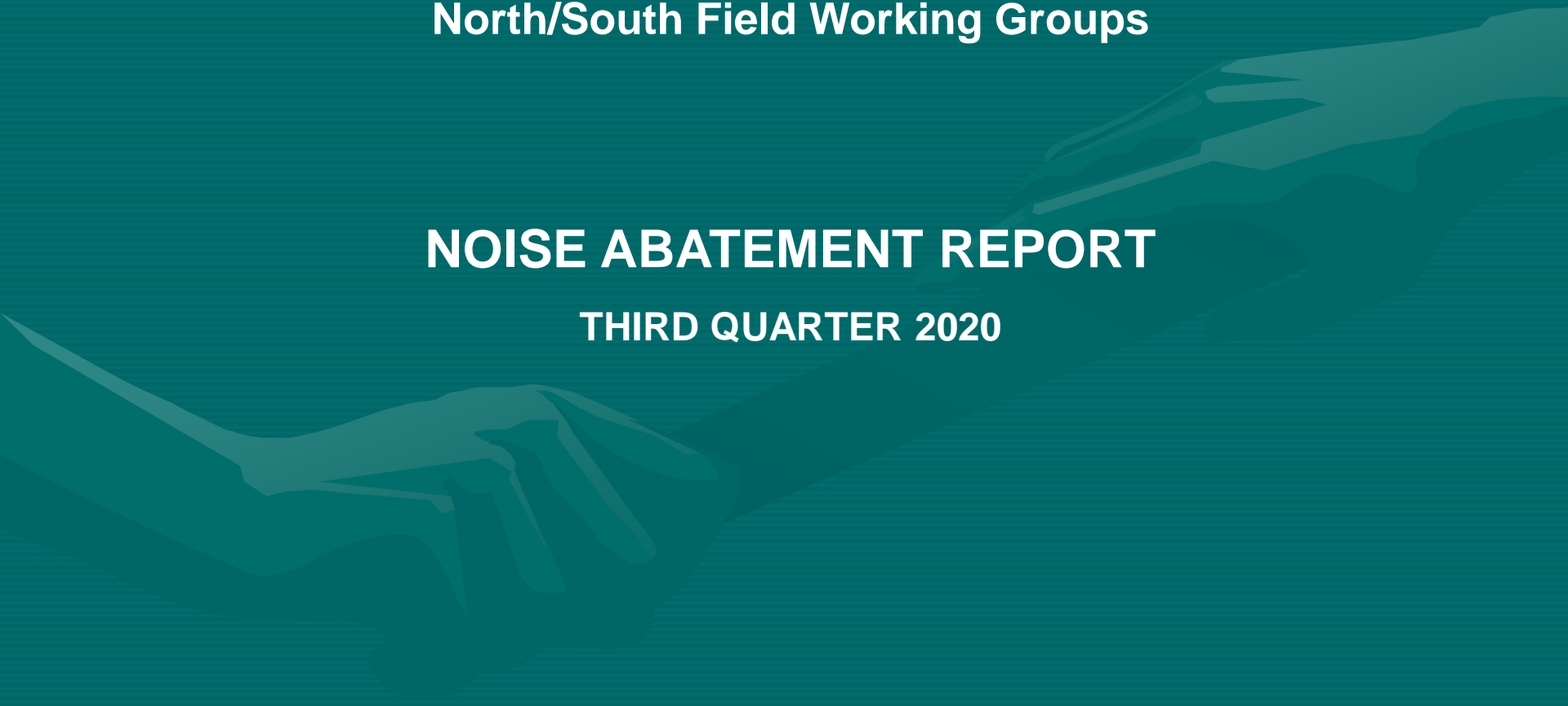


NOISE FORUM SUMMARY

North/South Field Working Groups

NOISE ABATEMENT REPORT

THIRD QUARTER 2020



Compliance Monitoring Quarterly Summary Comparison Third Quarter 2020				
	2019Q3		2020Q3	
	Compl.	N/C	Compl.	N/C
Runway 28R/L Jet Departure Compliance	95%	5%	96%	4%
Total Airport-wide Corporate Jet Departures	2,917	141	2,098	84
Runway 10R/L Jet Landing Compliance	0%	0%	0%	0%
Total Southeast Plan Corporate Jet Landings	0	0	0	0
North Field VFR Departure Compliance	96%	4%	93%	7%
Total Runways 28R/L & 33 Departures	325	14	236	19
North Field Quiet Hours Compliance	75%	25%	66%	33%
Total North Field Quiet Hours Departures	219	72	123	62
Runway 30 BFI Right Turn Departure Compliance	100%	0%	100%	0%
Total Runway 30 Turbojet Departures	21,252	5	11,698	7
Night Time Departure Compliance	93%	7%	99%	1%
Total Runway 30 Night Turbojet Departures	3,748	266	2,182	32
Runway 12 Night Departure Compliance	0%	0%	0%	0%
Total Runway 12 Night Turbojet Departures	0	0	0	0
Runway 30 East Turn Departure Compliance	100%	0%	100%	0%
Total Runway 30 East Turn Departures	5,981	13	4,220	17
100 Degree Radial Turbojet Landing Compliance	99%	1%	98%	2%
Total 100 Degree Radial Turbojet Landings	1,381	14	704	12
Engine Runup Program Compliance	100%	0%	100%	0%
Total Evening and Nighttime Engine Runups	11	0	16	0
Note: N/C means non-compliant. Percentage values are rounded out.				

Operation Details	
Beacon Code:	3373
AC Type:	H25C
Operation Type:	Departure
Runway:	28L
Date/Time:	12/13/2016 8:26:14 AM

© 2004 GDT, Inc. and its licensors, Rel. 07/2004
© MapBox © OpenStreetMap

Runway 28R/L Jet Departure NAP

2020Q3
96% Compliance
(2,182 total departures)
(84 non-compliant)

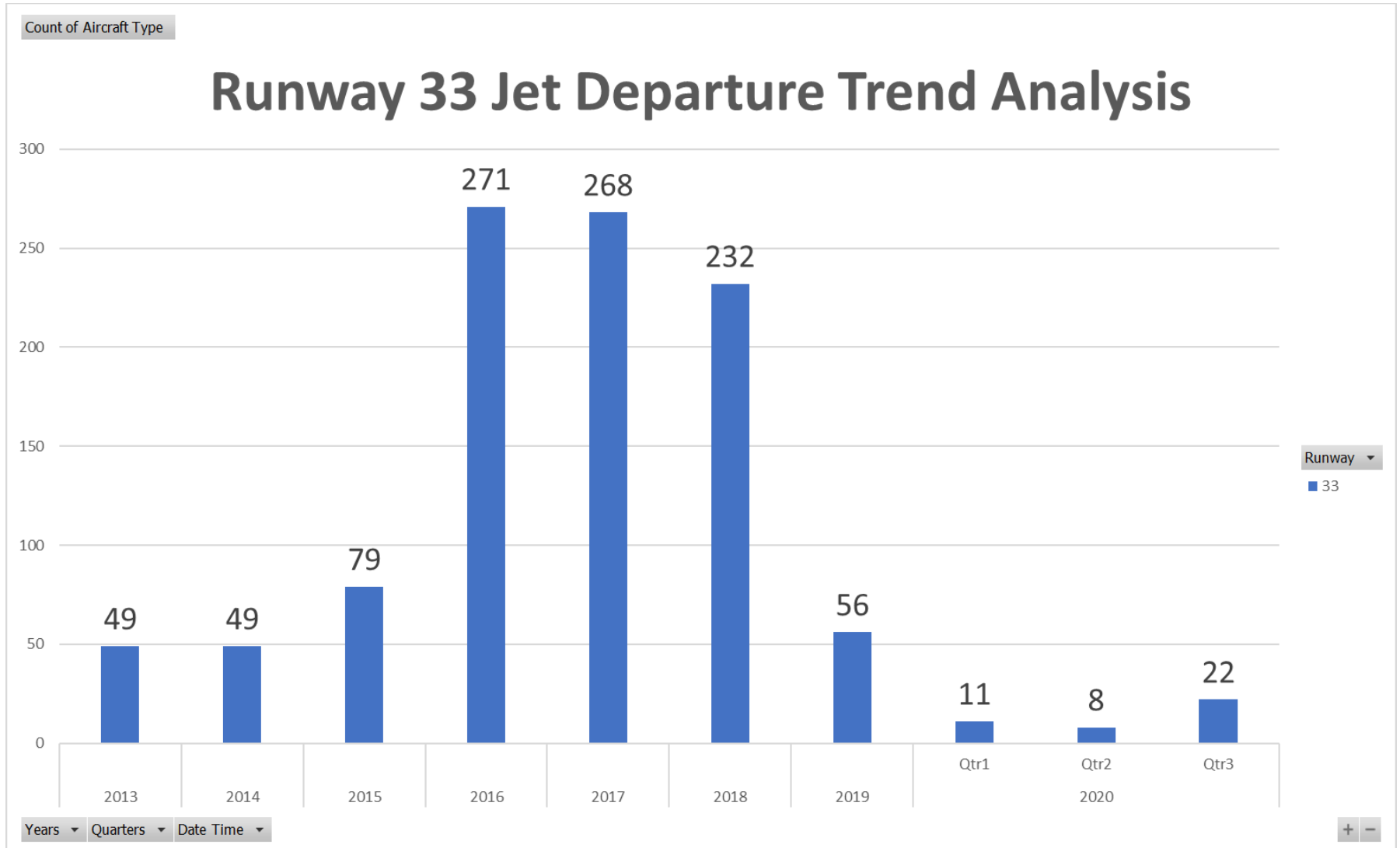
2019Q3
95% Compliance
(3,058 total departures)
(141 non-compliant)

Heading: 325
Elevation: 15

■ Arrivals
■ Departures
■ Touch and Go
■ Overflights

RUNWAY 33 JET DEPARTURES

Third Quarter 2020



Operation Details	
Beacon Code:	4564
AC Type:	C550
Operation Type:	Arrival
Runway:	10R
Date/Time:	12/15/2016 8:15:42 PM

© 2004 GDF, Inc. and its licensors, Rel. 07/2004
© MapBox © OpenStreetMap

Runway 10R/L Jet Landing NAP

2020Q3

N/A

**(0 total landings)
(0 non-compliant)**

2019Q3

N/A

**(0 total landings)
(0 non-compliant)**

Heading: 325
Elevation: 15

■ Arrivals
■ Departures
■ Touch and Go
■ Overflights

Operation Details	
Beacon Code:	4544
AC Type:	P28A
Operation Type:	Departure
Runway:	28R
Date/Time:	6/1/2016 6:27:01 PM



VFR Aircraft Departure NAP

2020Q3
93% Compliance
(255 total departures)
(19 non-compliant)

2019Q3
96% Compliance
(339 total departures)
(19 non-compliant)

Heading: 338
Elevation: 29

- Arrivals
- Departures
- Touch and Go
- Overflights

Operation Details
Beacon Code: 3351
AC Type: PC12
Operation Type: Departure
Runway: 28R
Date/Time: 12/13/2016 6:02:33 AM

© 2004 GDT, Inc. and its licensors, Rel. 07/2004
© MapBox © OpenStreetMap

North Field Quiet Hours NAP

2020Q3

66% Compliance
(185 total departures)
(62 non-compliant)

2019Q3

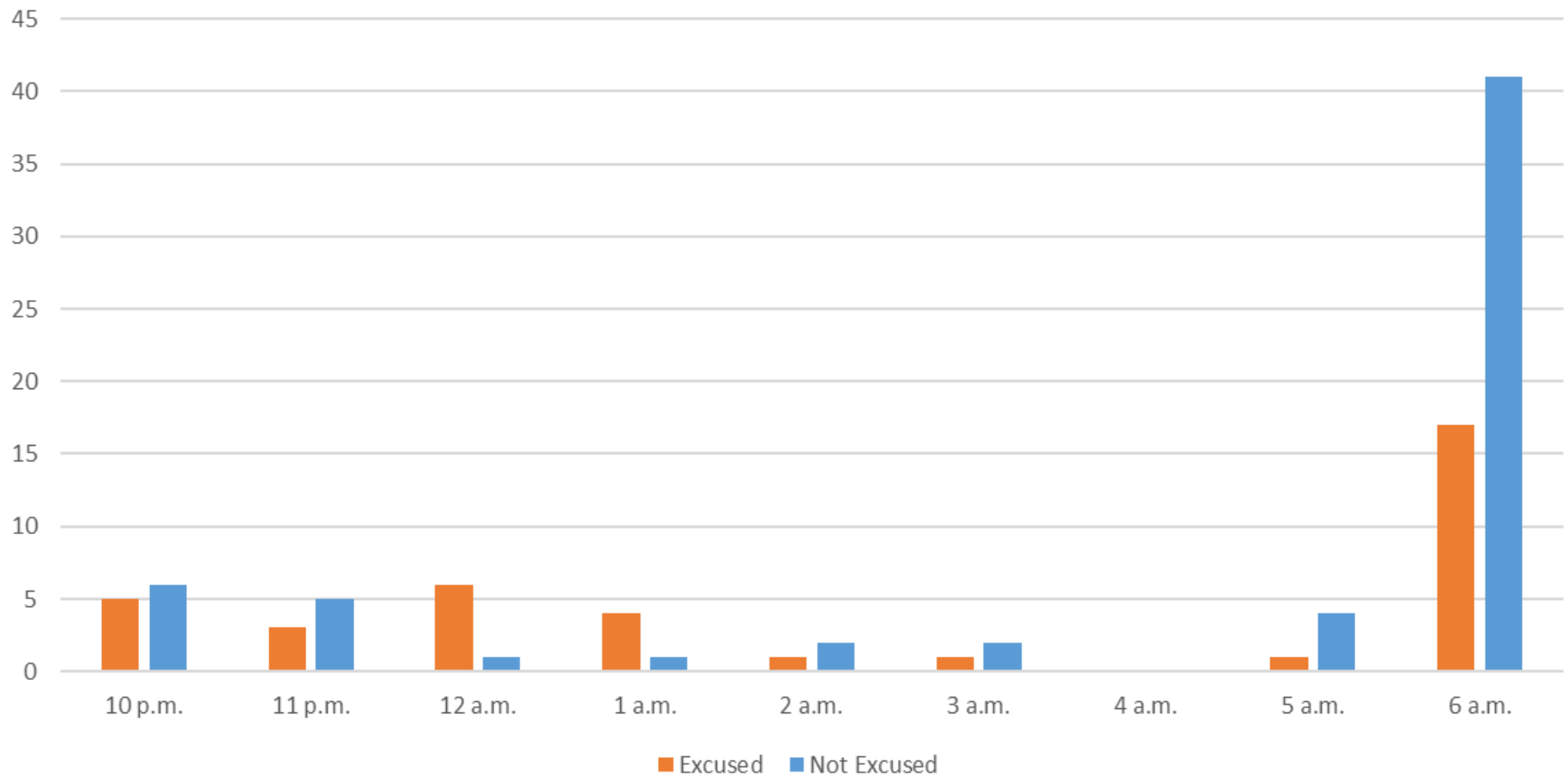
75% Compliance
(291 total departures)
(72 non-compliant)

Heading: 343
Elevation: 32

Arrivals
Departures
Touch and Go
Overflights

North Field Quiet Hours NAP Non-Compliant by Hour

Excused/Not Excused Violation Count by Hour



Operation Details
Beacon Code: 3641
AC Type: B737
Operation Type: Departure
Runway: 30
Date/Time: 8/22/2017 10:16:59 PM



Night Time Departure NAP

2020Q3

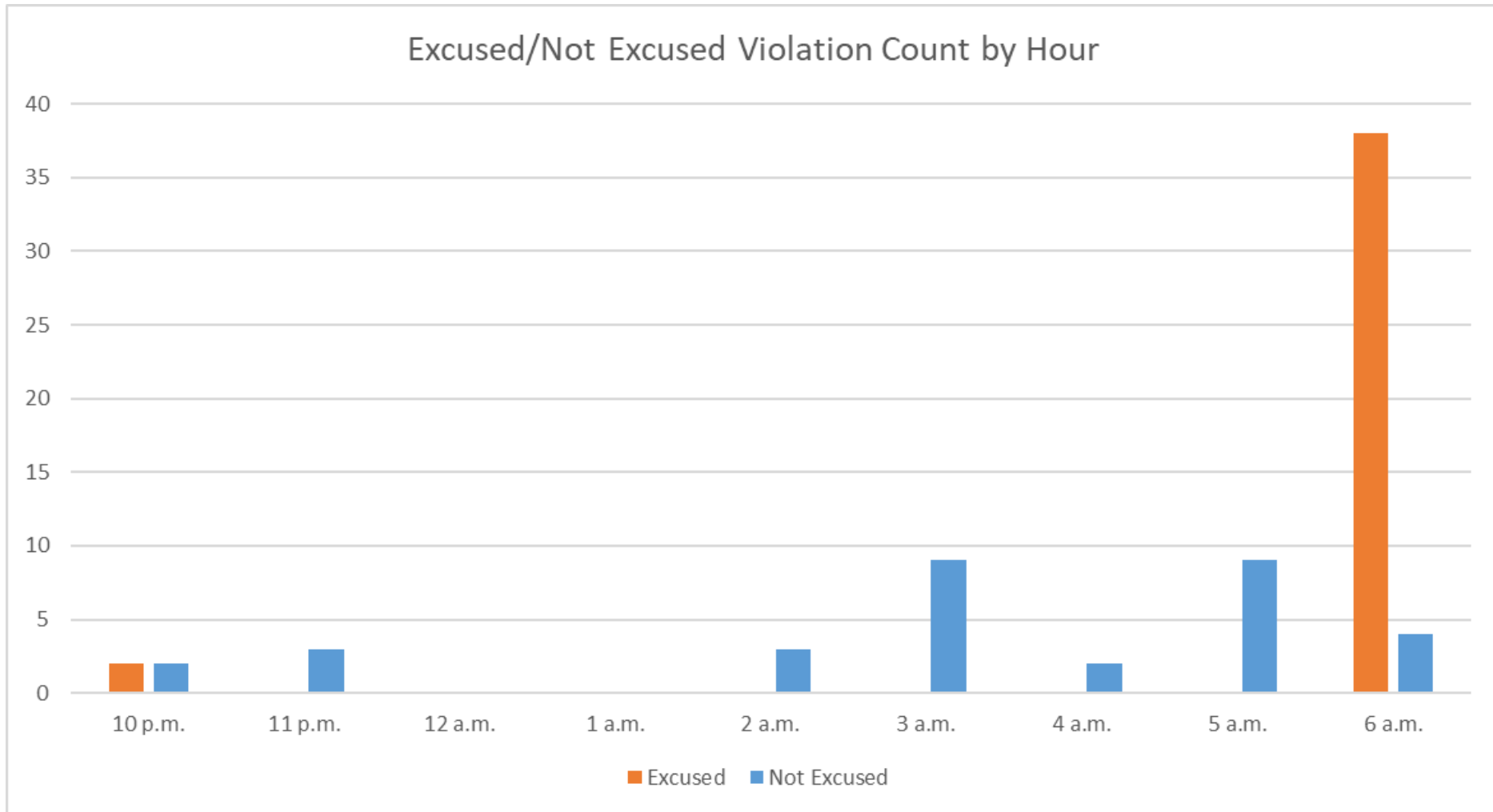
99% Compliance
(2,214 total departures)
(32 non-compliant)

*REBAS Gate non-compliant = 31

2019Q3

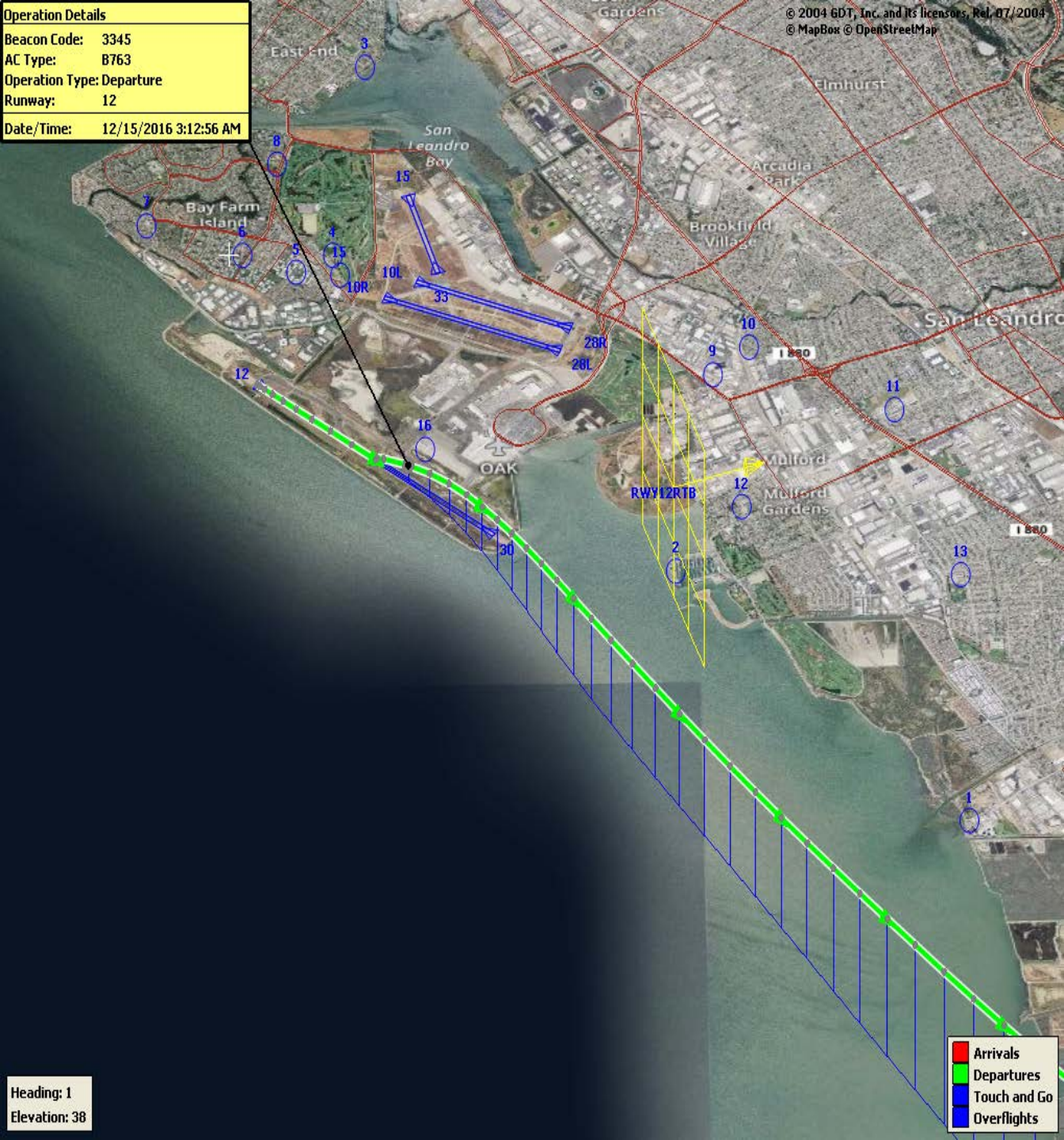
93% Compliance
(4,014 total departures)
(266 non-compliant)

Night Time NAP Non-Compliant Count by Hour



Operation Details
Beacon Code: 3345
AC Type: B763
Operation Type: Departure
Runway: 12
Date/Time: 12/15/2016 3:12:56 AM

Heading: 1
Elevation: 38



Runway 12 Night Departure NAP

2020Q3

N/A

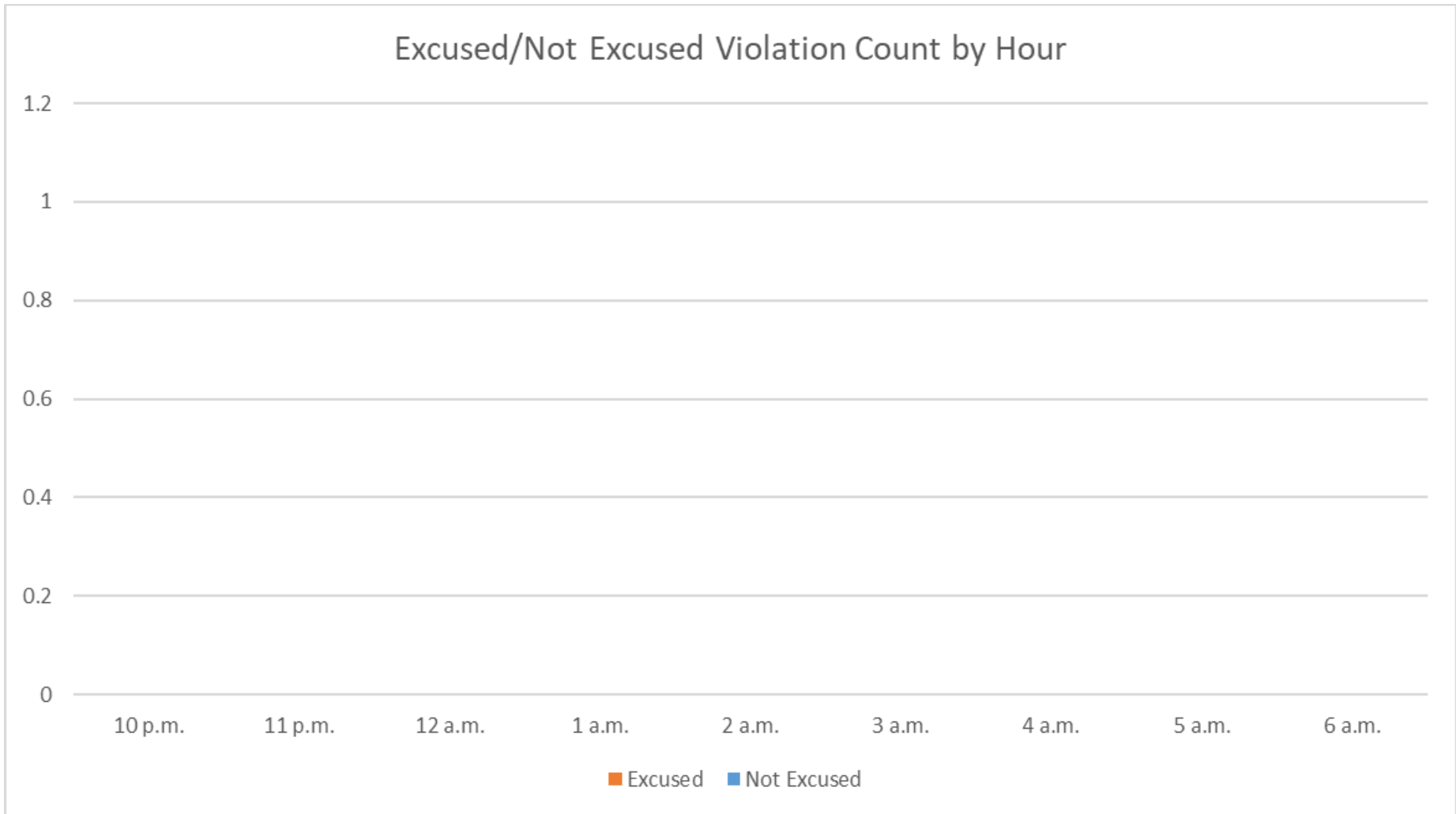
(0 total departures)
(0 non-compliant)

2019Q3

N/A

(0 total departures)
(0 non-compliant)

Runway 12 Night Departure Non-Compliant Count by Hour



Operation Details	
Beacon Code:	3374
AC Type:	B737
Operation Type:	Departure
Runway:	30
Date/Time:	1/7/2019 8:57:05 AM

© 2004 GDT, Inc. and its licensors, Rel. 07/2004
© MapBox © OpenStreetMap

Runway 30 Bay Farm Right Turn NAP

2020Q3
100% Compliance
(11,705 total departures)
(7 non-compliant)

2019Q3
100% Compliance
(21,257 total departures)
(5 non-compliant)

Heading: 299
Elevation: 36



Arrivals
Departures
Touch and Go
Overflights



Runway 30 East Turn NAP

2020Q3

**100% Compliance
(4,327 total departures)
(17 non-compliant)**

***Excused Departures = 29**

2019Q3

**100% Compliance
(5,994 total departures)
(13 non-compliant)**

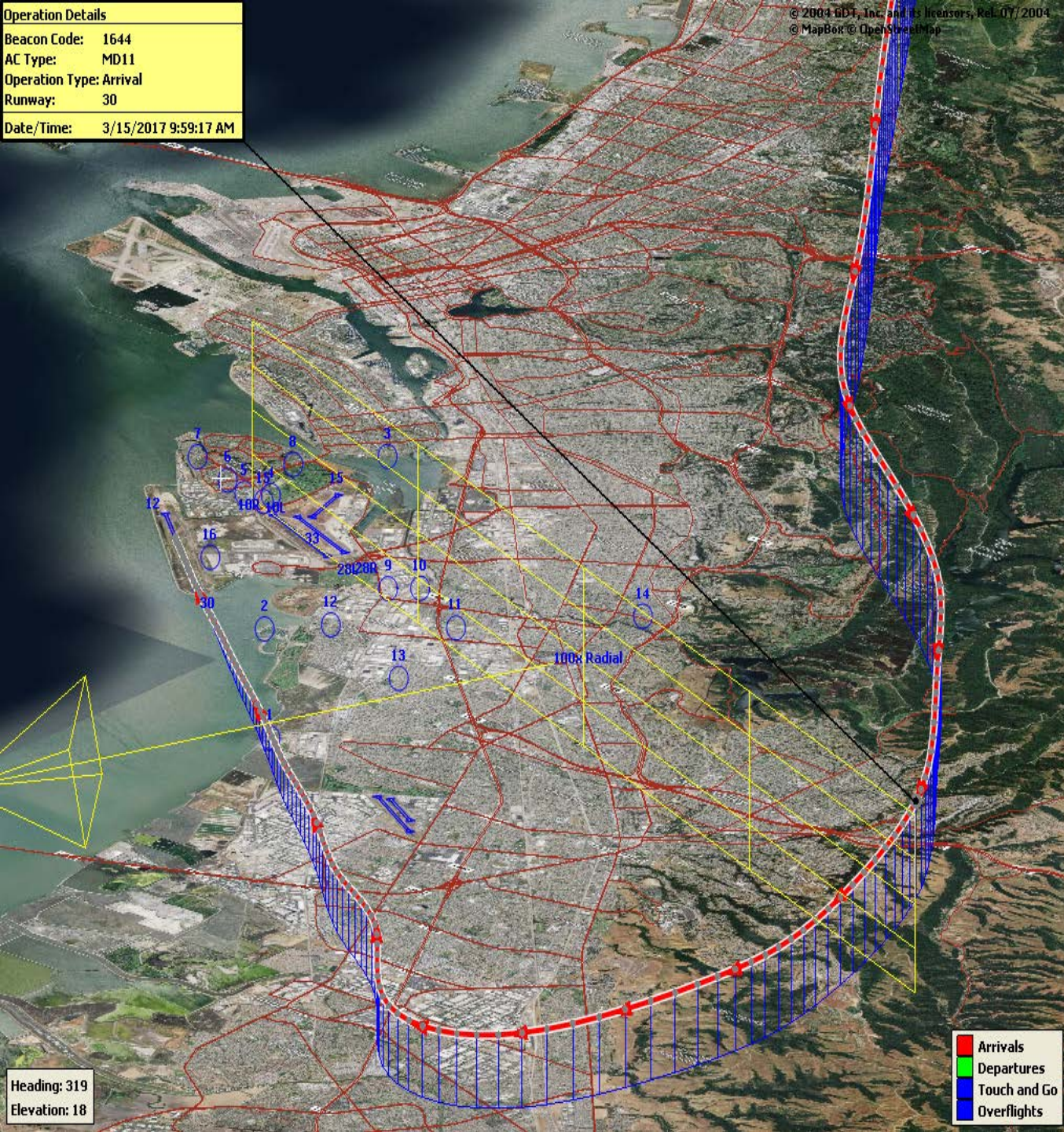
Operation Details
Beacon Code: 1644
AC Type: MD11
Operation Type: Arrival
Runway: 30
Date/Time: 3/15/2017 9:59:17 AM

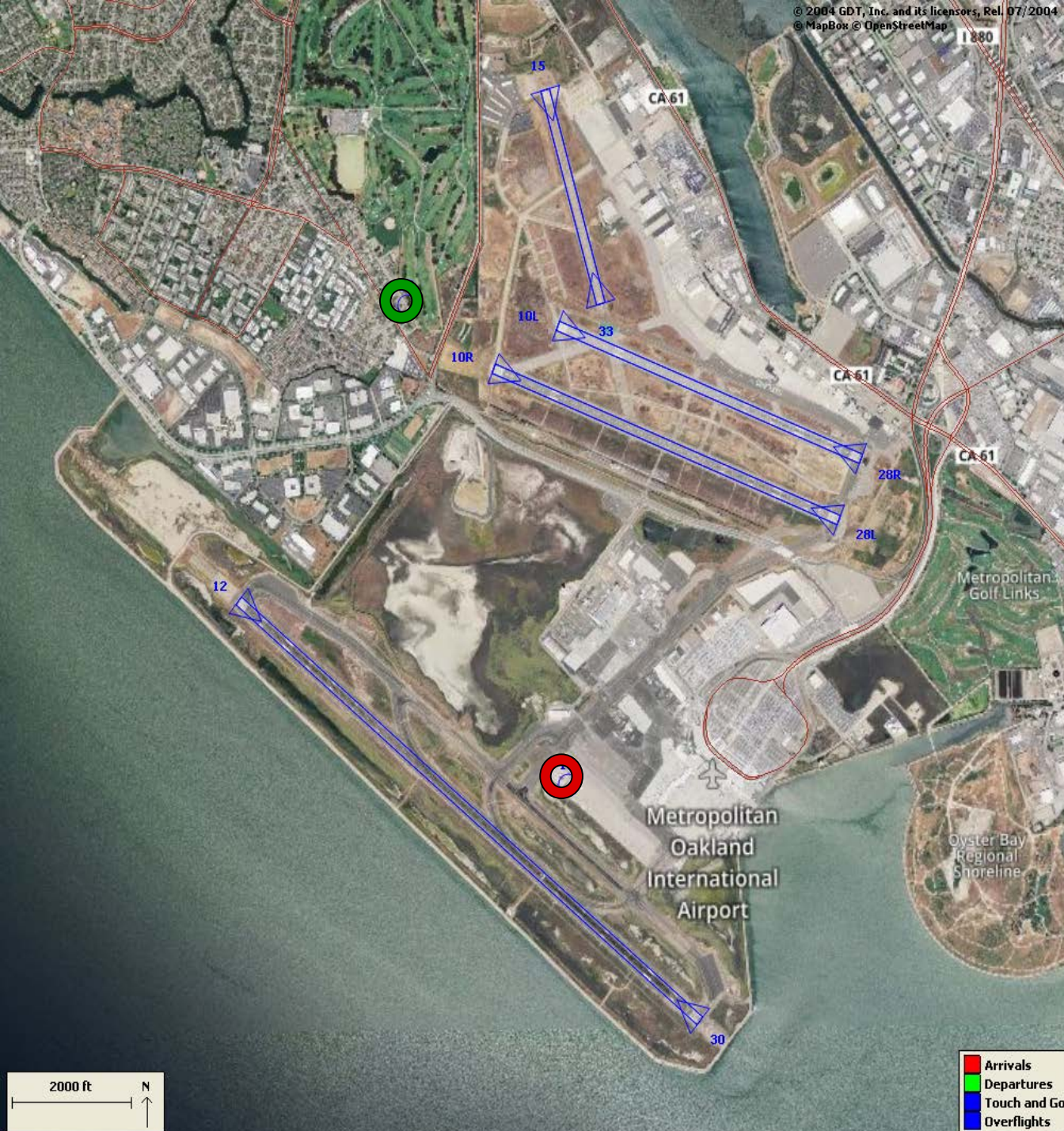
© 2004 GDI, Inc. and its licensors. Rel. 07/2004
© MapBox © OpenStreetMap

100 Degree Radial At 3,000 ft. NAP

2020Q3
98% Compliance
(716 total landings)
(12 non-compliant)

2019Q3
99% Compliance
(1,395 total landings)
(14 non-compliant)





Engine Run-up NAP

2020Q3

**100% Compliance
(16 engine run-ups)*
(0 non-compliant)**

2019Q3

**100% Compliance
(11 engine run-ups)
(0 non-compliant)**

***Only above idle-power run-ups
recorded.**

**Compliance Monitoring Quarterly Summary Comparison
Third Quarter 2020 - Quarter-to-Quarter**

	2020Q2		2020Q3	
	Compl.	N/C	Compl.	N/C
Runway 28R/L Jet Departure Compliance	96%	4%	96%	4%
Total Airport-wide Corporate Jet Departures	1,106	49	2,098	84
Runway 10R/L Jet Landing Compliance	85%	15%	N/A	N/A
Total Southeast Plan Corporate Jet Landings	11	2	0	0
North Field VFR Departure Compliance	87%	13%	93%	7%
Total Runways 28R/L & 33 Departures	124	18	236	19
North Field Quiet Hours Compliance	78%	22%	66%	33%
Total North Field Quiet Hours Departures	162	47	123	62
Runway 30 BFI Right Turn Departure Compliance	100%	0%	100%	0%
Total Runway 30 Turbojet Departures	7,676	3	11,698	7
Night Time Departure Compliance	99%	1%	99%	1%
Total Runway 30 Night Turbojet Departures	1,825	26	2,182	32
Runway 12 Night Departure Compliance	92%	8%	N/A	N/A
Total Runway 12 Night Turbojet Departures	48	4	0	0
Runway 30 East Turn Departure Compliance	100%	0%	100%	0%
Total Runway 30 East Turn Departures	2,712	3	4,220	17
100 Degree Radial Turbojet Landing Compliance	99%	1%	98%	2%
Total 100 Degree Radial Turbojet Landings	540	6	704	12
Engine Runup Program Compliance	100%	0%	100%	0%
Total Evening and Nighttime Engine Runups	11	0	16	0

Note: N/C means non-compliant. Percentage values are rounded out.

Table 1. North Field Night Aircraft Departure SEL Noise Measurements
Total Aircraft Departures = 185

Third Quarter 2020 (10:00 p.m. to 7:00 a.m.)

NMT Number	Aircraft Noise Events Below SEL 80 dBA	Aircraft Noise Events SEL 80 - 84.9 dBA			Aircraft Noise Events SEL 85 - 89.9 dBA			Aircraft Noise Events SEL ≥ 90 dBA			Total Aircraft Noise Events
		Amount	Nightly Average	As Percentage of Departures	Amount	Nightly Average	As Percentage of Departures	Amount	Nightly Average	As Percentage of Departures	
1	0	0	0.0	0.0%	0	0.0	0.0%	0	0.0	0.0%	0
2	6	3	0.0	0.5%	6	0.1	1.1%	1	0.0	0.2%	16
3	25	3	0.0	0.5%	0	0.0	0.0%	0	0.0	0.0%	28
4	53	88	1.0	15.5%	13	0.1	2.3%	1	0.0	0.2%	155
5	80	43	0.5	7.6%	12	0.1	2.1%	2	0.0	0.4%	137
6	32	8	0.1	1.4%	5	0.1	0.9%	0	0.0	0.0%	45
7	17	5	0.1	0.9%	0	0.0	0.0%	0	0.0	0.0%	22
8	33	14	0.2	2.5%	1	0.0	0.2%	1	0.0	0.2%	49
9	5	0	0.0	0.0%	0	0.0	0.0%	0	0.0	0.0%	5
10	3	1	0.0	0.2%	0	0.0	0.0%	0	0.0	0.0%	4
11	0	0	0.0	0.0%	0	0.0	0.0%	0	0.0	0.0%	0
12	0	0	0.0	0.0%	0	0.0	0.0%	0	0.0	0.0%	0
13	0	0	0.0	0.0%	0	0.0	0.0%	0	0.0	0.0%	0
14	0	0	0.0	0.0%	0	0.0	0.0%	0	0.0	0.0%	0
All NMTs	254	165	2	0	37	0	0	5	0	0	461

Table 2. Aircraft SEL Noise Measurements in Alameda - Total Aircraft Departures = 184

Third Quarter 2020 (10:00 p.m. to 7:00 a.m.)

NMT Number	Aircraft Noise Events Below SEL 80 dBA	Aircraft Noise Events SEL 80 - 84.9 dBA			Aircraft Noise Events SEL 85 - 89.9 dBA			Aircraft Noise Events SEL ≥ 90 dBA			Total Aircraft Noise Events
		Amount	Nightly Average	As Percentage of Departures	Amount	Nightly Average	As Percentage of Departures	Amount	Nightly Average	As Percentage of Departures	
3	25	3	0.0	1.3%	0	0.0	0.0%	0	0.0	0.0%	28
4	53	88	1.0	36.8%	13	0.1	5.4%	1	0.0	0.4%	155
5	80	43	0.5	18.0%	12	0.1	5.0%	2	0.0	0.8%	137
6	32	8	0.1	3.3%	5	0.1	2.1%	0	0.0	0.0%	45
7	17	5	0.1	2.1%	0	0.0	0.0%	0	0.0	0.0%	22
8	33	14	0.2	5.9%	1	0.0	0.4%	1	0.0	0.4%	49
Total	240	161	1.8		31	0.3		4	0.0		436

Table 3. Aircraft SEL Noise Measurements in San Leandro - Total Aircraft Departures = 1

Third Quarter 2020 (10:00 p.m. to 7:00 a.m.)

NMT Number	Aircraft Noise Events Below SEL 80 dBA	Aircraft Noise Events SEL 80 - 84.9 dBA			Aircraft Noise Events SEL 85 - 89.9 dBA			Aircraft Noise Events SEL ≥ 90 dBA			Total Aircraft Noise Events
		Amount	Nightly Average	As Percentage of Departures	Amount	Nightly Average	As Percentage of Departures	Amount	Nightly Average	As Percentage of Departures	
2	6	3	0.0	0.9%	6	0.1	1.8%	1	0.0	0.3%	16
9	5	0	0.0	0.0%	0	0.0	0.0%	0	0.0	0.0%	5
10	3	1	0.0	0.3%	0	0.0	0.0%	0	0.0	0.0%	4
11	0	0	0.0	0.0%	0	0.0	0.0%	0	0.0	0.0%	0
12	0	0	0.0	0.0%	0	0.0	0.0%	0	0.0	0.0%	0
13	0	0	0.0	0.0%	0	0.0	0.0%	0	0.0	0.0%	0
14	0	0	0.0	0.0%	0	0.0	0.0%	0	0.0	0.0%	0
Total	14	4	0.0		6	0.1		1	0.0		25

Rolling Take-off Night Departure Procedure (1:00 to 5:00 AM)
Third Quarter 2020, NMT 2

	Aircraft Departures	Recorded Noise Events (a)	Lmax Average	SEL Average	Avg. Duration (seconds)
Baseline (November 2002) [A]					
DC10/MD10	87	32	69	78	22
MD11	32	13	70	79	24
A306	67	21	67	77	25
Third Quarter 2020 [B]					
	Total [X]	Est. Avg. Monthly [X/3]			
B763	186	62	11	65	73
DC10/MD10	48	16	9	65	73
MD11	205	68	42	65	74
A306	100	33	3	70	79
B757	149	50	5	70	74
B77L	126	42	2	76	80
Difference [A-B]					
DC10/MD10		-71	-23	-4	-5
MD11		36	29	-5	-5
A306		-34	-18	3	2

(a) For the current calendar quarter reported, ANOMS does not correlate all departures to their respective noise events; that is most, but not all, aircraft back-blast noise events are effectively correlated as the program software algorithms may misidentify an aircraft noise event.

Source: ANOMS (Airport Noise and Operations Monitoring System)

Rolling Take-off Night Departure Procedure (1:00 to 5:00 AM)
Third Quarter 2019, NMT 2

	Aircraft Departures	Recorded Noise Events (a)	Lmax Average	SEL Average	Avg. Duration (seconds)
Baseline (November 2002) [A]					
DC10/MD10	87	32	69	78	22
MD11	32	13	70	79	24
A306	67	21	67	77	25
Third Quarter 2019 [B]					
	Total [X]	Est. Avg. Monthly [X/3]			
B763	122	41	6	64	72
DC10/MD10	53	18	6	66	75
MD11	259	86	58	66	74
A306	116	39	13	67	76
B757	173	58	12	67	74
B77L	88	29	5	66	74
Difference [A-B]					
DC10/MD10		-69	-26	-3	-3
MD11		54	45	-4	-5
A306		-28	-8	0	-1

(a) For the current calendar quarter reported, ANOMS does not correlate all departures to their respective noise events; that is most, but not all, aircraft back-blast noise events are effectively correlated as the program software algorithms may misidentify an aircraft noise event.

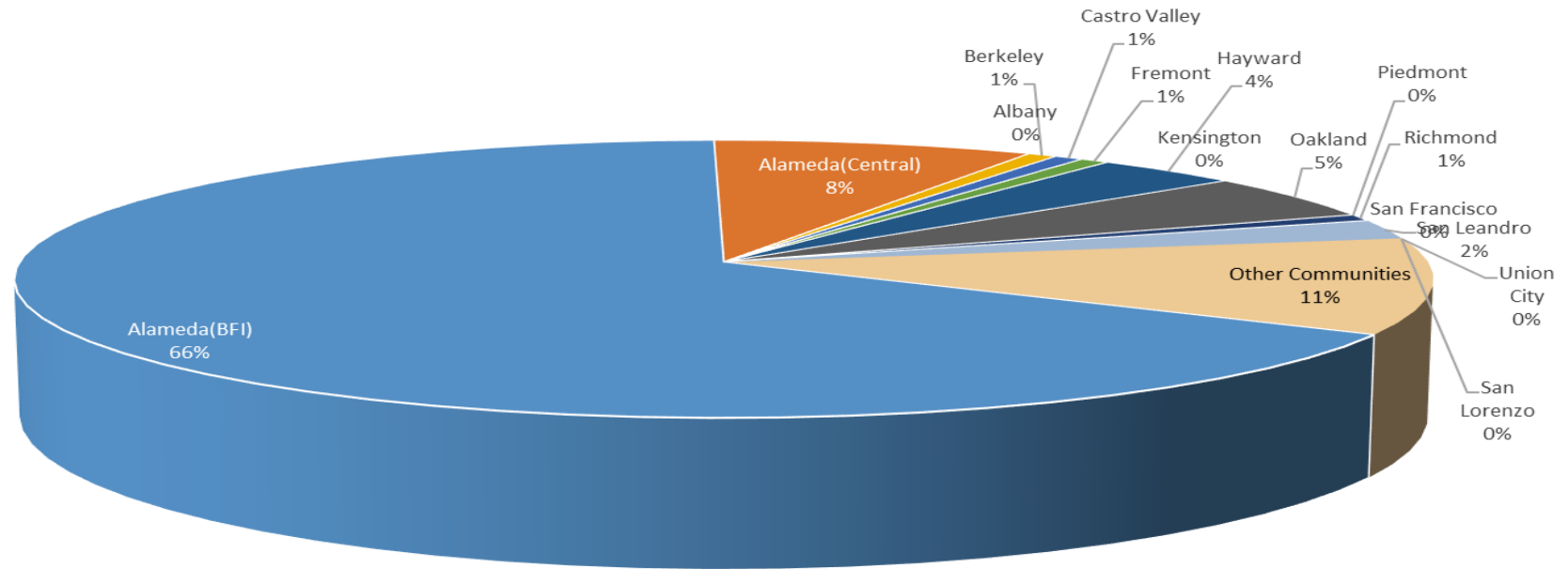
Source: ANOMS (Airport Noise and Operations Monitoring System)

Oakland International Airport Noise Complaint Summary July 2020		
Community	Callers	Complaints
Alameda(BFI)	89	2718
Alameda(Central)	11	97
Albany	0	0
Berkeley	1	3
Castro Valley	1	57
Fremont	1	1
Hayw ard	5	40
Kensington	0	0
Oakland	7	2595
Piedmont	0	0
Richmond	1	758
San Francisco	0	0
San Leandro	3	4
Union City	0	0
San Lorenzo	0	0
Other Communities	15	985
Total	134	7258
Complaints by Type		
Website	0	
E-mail	2840	
Phone	0	
View point App	4418	
Complaints by Time of Day		
Day (0700 - 1900)	3840	
Evening (1900 - 2200)	1432	
Night (2200 - 0700)	1986	
Complaints by Type of Operation		
Arrivals	3126	
Departures	3604	
Over-flights	423	
Touch & Go	105	
Not Linked to an Operation	0	
Complaints by Type of Aircraft		
Business Jet	675	
Helicopter	36	
Jet	5272	
Military	0	
Not Reported (not linked to an aircraft)	0	
Other (Type information not available)	411	
Propeller	720	
Turbo-prop	144	

Number of Callers

July 2020

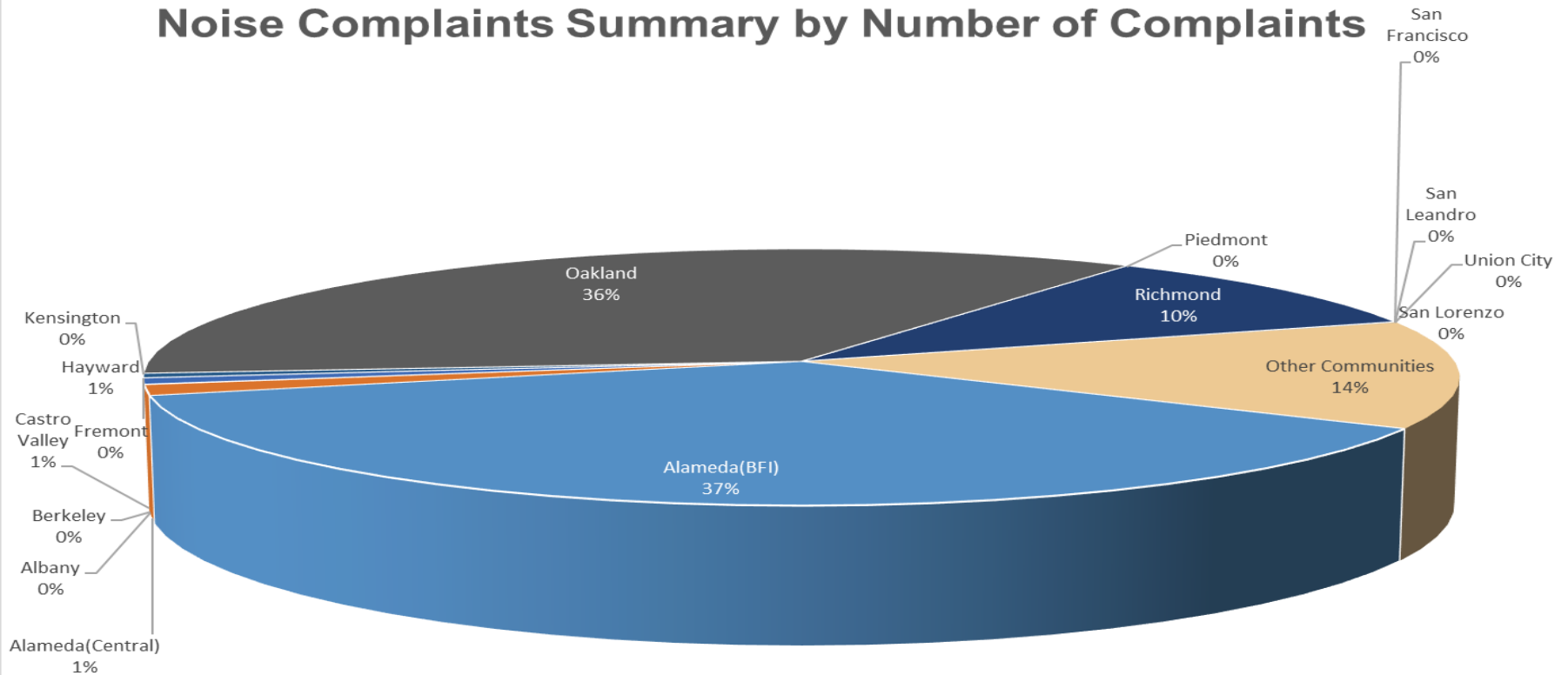
Noise Complaints Summary by Number of Callers



Number of Complaints

July 2020

Noise Complaints Summary by Number of Complaints

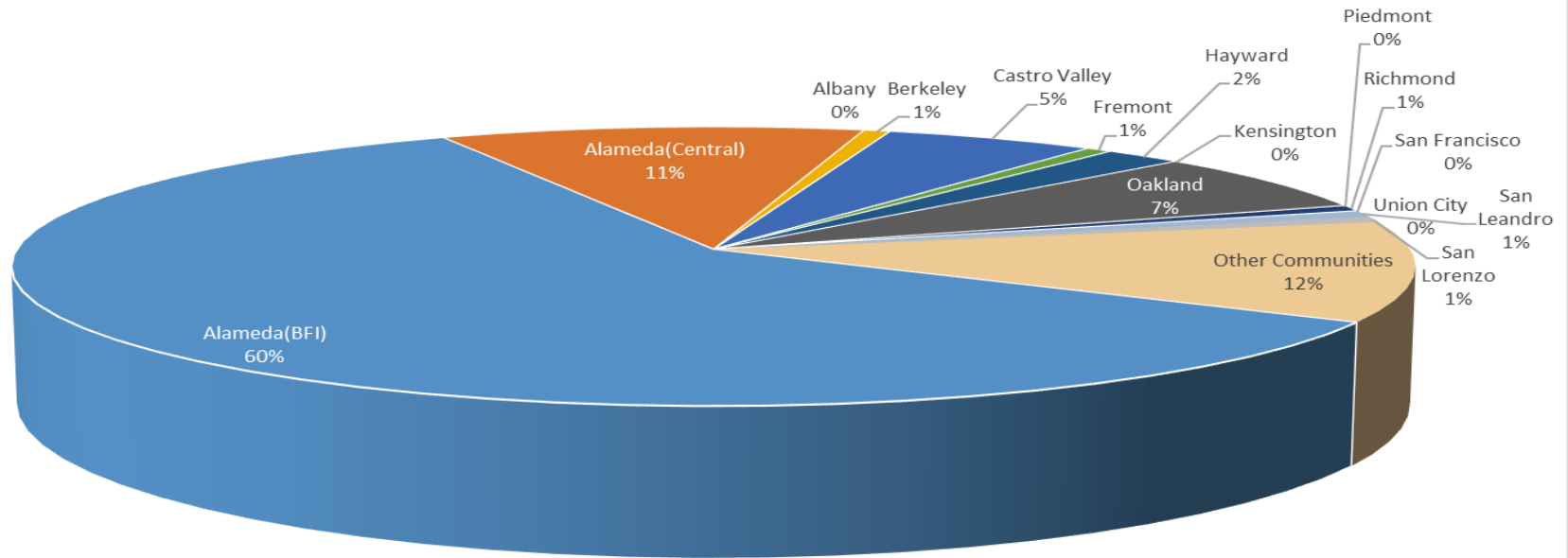


Oakland International Airport Noise Complaint Summary August 2020		
Community	Callers	Complaints
Alameda(BFI)	87	2954
Alameda(Central)	16	361
Albany	0	0
Berkeley	1	29
Castro Valley	8	114
Fremont	1	1
Hayw ard	3	33
Kensington	0	0
Oakland	10	3192
Piedmont	0	0
Richmond	1	517
San Francisco	0	0
San Leandro	1	1
Union City	0	0
San Lorenzo	1	30
Other Communities	17	713
Total	146	7945
Complaints by Type		
Website	0	
E-mail	3583	
Phone	0	
View point App	4362	
Complaints by Time of Day		
Day (0700 - 1900)	3872	
Evening (1900 - 2200)	2293	
Night (2200 - 0700)	1780	
Complaints by Type of Operation		
Arrivals	3596	
Departures	3962	
Over-flights	269	
Touch & Go	118	
Not Linked to an Operation	0	
Complaints by Type of Aircraft		
Business Jet	875	
Helicopter	64	
Jet	6007	
Military	0	
Not Reported (not linked to an aircraft)	0	
Other (Type information not available)	137	
Propeller	582	
Turbo-prop	280	

Number of Callers

August 2020

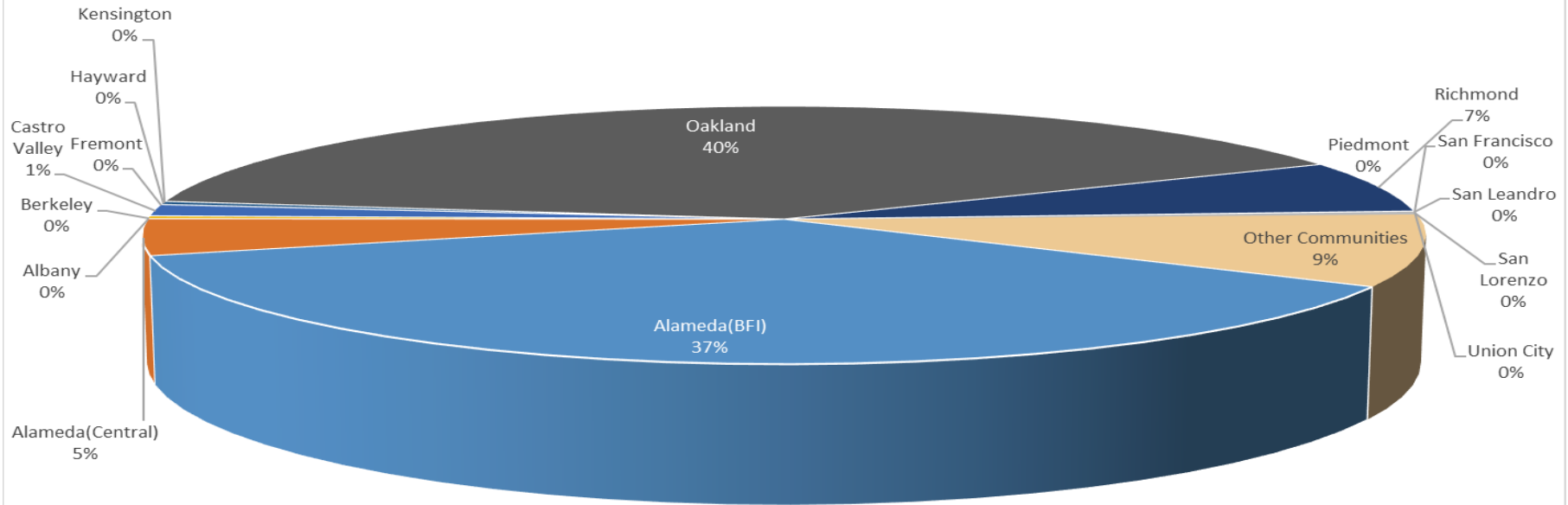
Noise Complaints Summary by Number of Callers



Number of Complaints

August 2020

Noise Complaints Summary by Number of Complaints

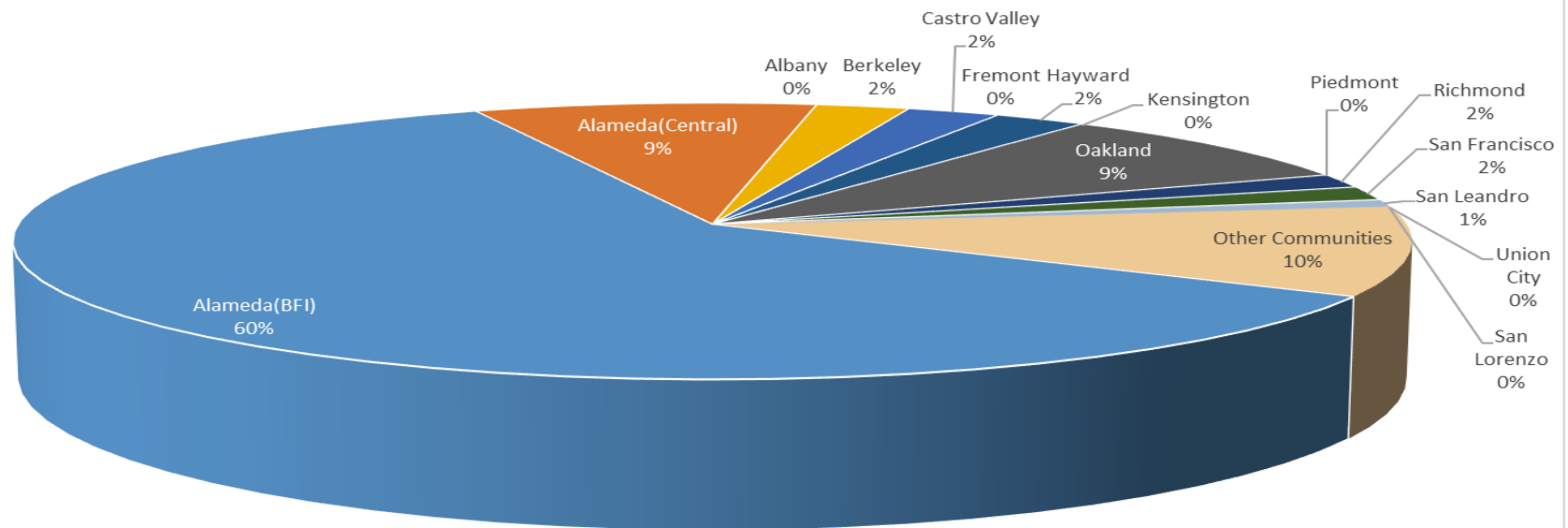


Oakland International Airport Noise Complaint Summary September 2020		
Community	Callers	Complaints
Alameda(BFI)	75	1894
Alameda(Central)	11	152
Albany	0	0
Berkeley	3	3
Castro Valley	3	104
Fremont	0	0
Hayw ard	3	4
Kensington	0	0
Oakland	11	2547
Piedmont	0	0
Richmond	2	588
San Francisco	2	2
San Leandro	1	2
Union City	0	0
San Lorenzo	0	0
Other Communities	13	663
Total	124	5959
Complaints by Type		
Website	0	
E-mail	2692	
Phone	0	
View point App	3267	
Complaints by Time of Day		
Day (0700 - 1900)	2797	
Evening (1900 - 2200)	1015	
Night (2200 - 0700)	2147	
Complaints by Type of Operation		
Arrivals	2650	
Departures	2884	
Over-flights	306	
Touch & Go	119	
Not Linked to an Operation	0	
Complaints by Type of Aircraft		
Business Jet	641	
Helicopter	35	
Jet	4352	
Military	0	
Not Reported (not linked to an aircraft)	0	
Other (Type information not available)	179	
Propeller	588	
Turbo-prop	164	

Number of Callers

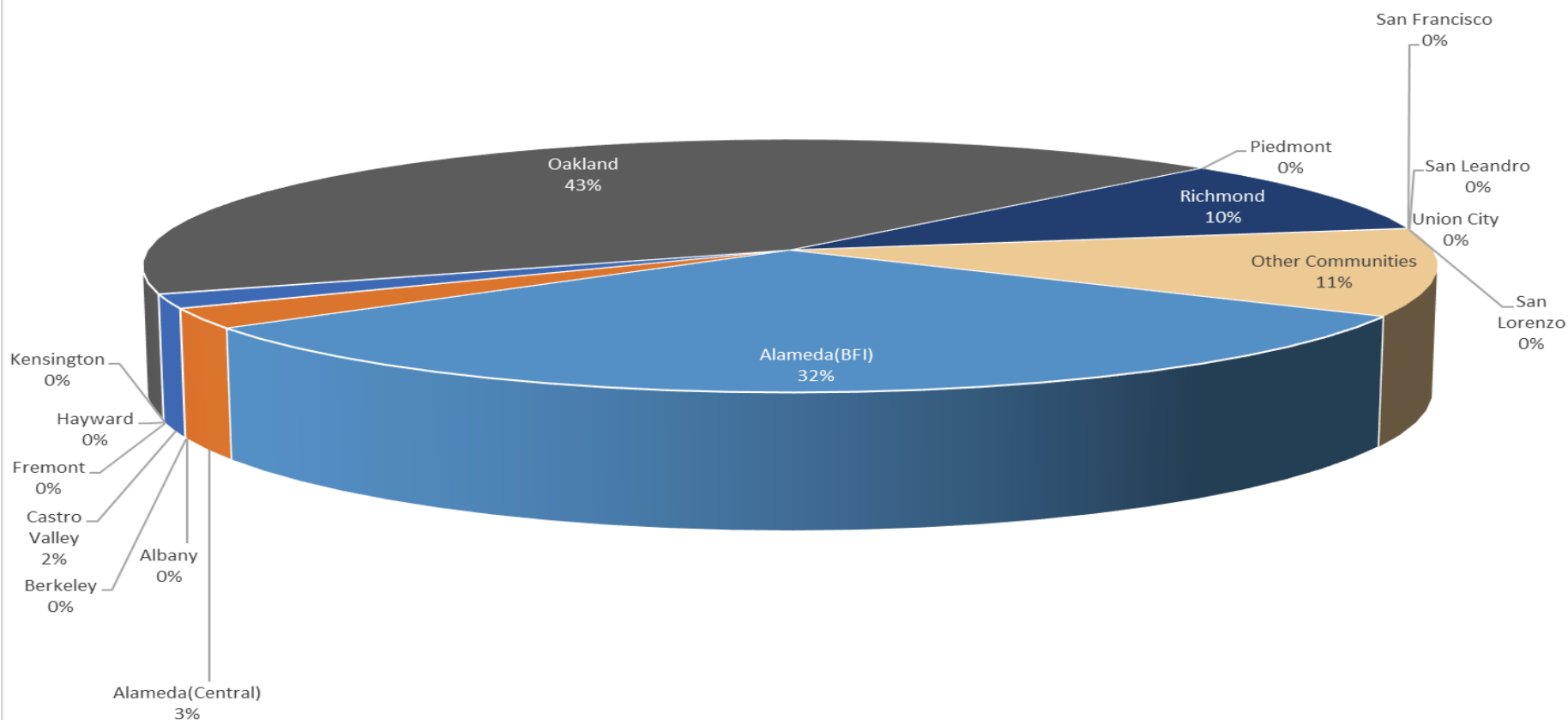
September 2020

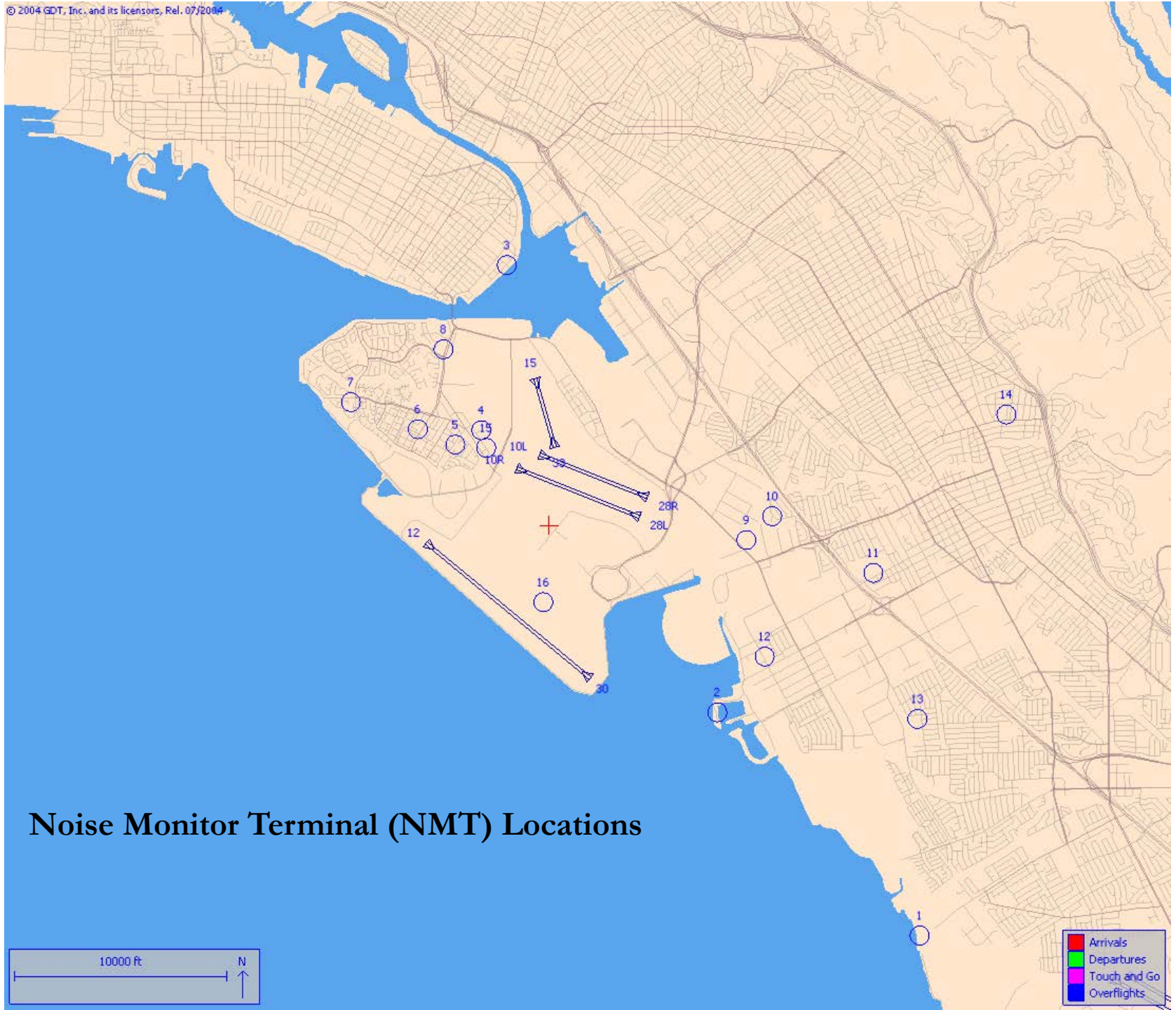
Noise Complaints Summary by Number of Callers



Number of Complaints September 2020

Noise Complaints Summary by Number of Complaints





Noise Monitor Terminal (NMT) Locations