

NOISE FORUM SUMMARY

North/South Field Working Groups



NOISE ABATEMENT REPORT

SECOND QUARTER 2024

Disclaimer

The Port of Oakland's Airport Noise and Operations Monitoring System (ANOMS) is the source of the data used in this report. Although ANOMS is a very sophisticated computer program that provides a state-of-the-art solution for collecting aircraft noise complaints. The number of aircraft noise complaints in the report are for informational purposes. Airport staff carefully reviews the data for accuracy and will make corrections whenever possible.

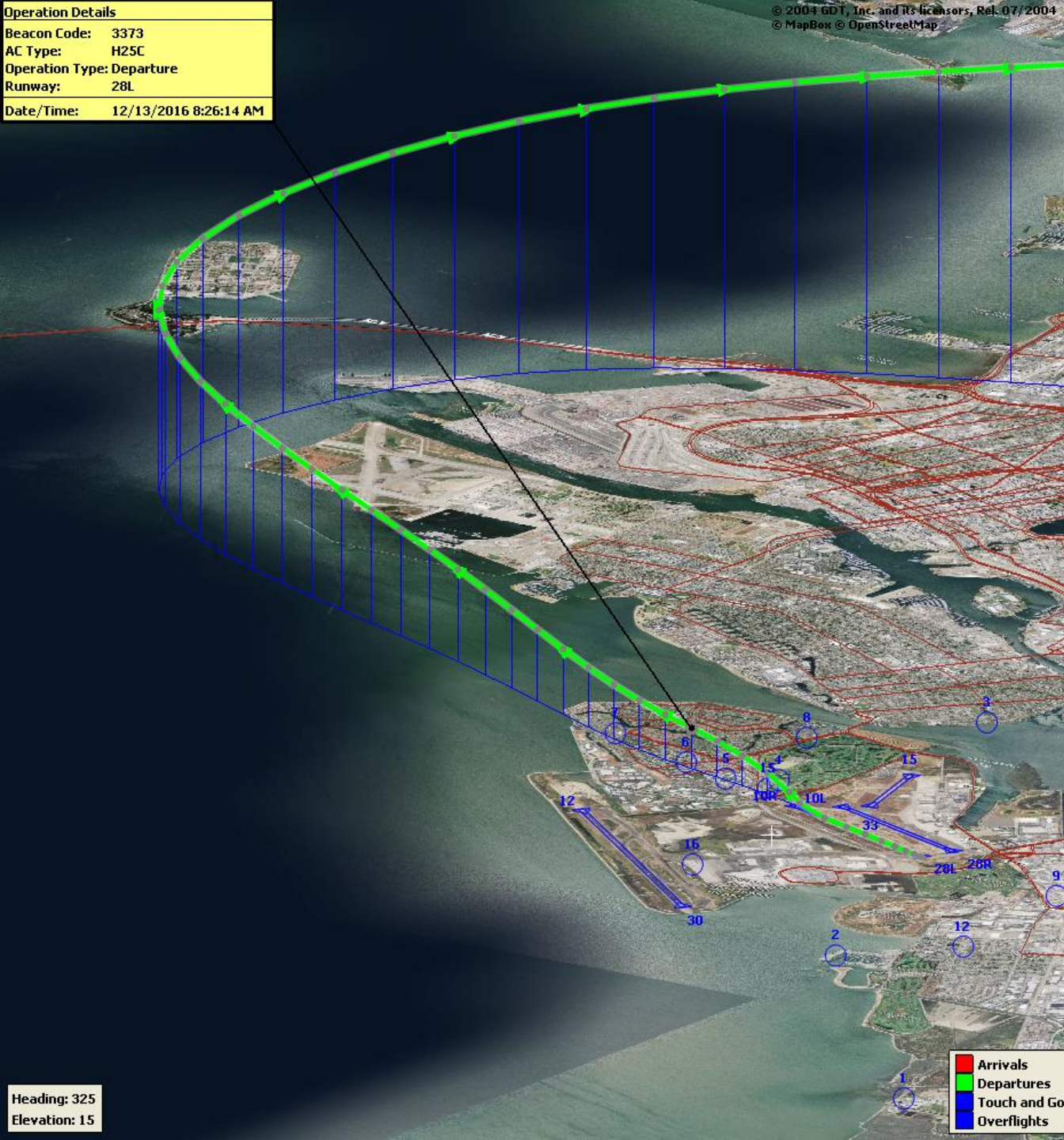
+
•
0

**Compliance Monitoring Quarterly Summary Comparison
Second Quarter 2024**

	2023Q2		2024Q2	
	Compl.	N/C	Compl.	N/C
Runway 28R/L Jet Departure Compliance	93%	7%	93%	7%
Total Airport-wide Corporate Jet Departures	2,061	159	2,474	180
Runway 10R/L Jet Landing Compliance	75%	25%	88%	12%
Total Southeast Plan Corporate Jet Landings	36	12	83	11
North Field VFR Departure Compliance	96%	4%	97%	3%
Total Runways 28R/L & 33 Departures	249	11	309	10
North Field Quiet Hours Compliance	86%	14%	90%	10%
Total North Field Quiet Hours Departures	168	28	233	27
Runway 30 BFI Right Turn Departure Compliance	100%	0%	100%	0%
Total Runway 30 Turbojet Departures	16,661	2	15,693	6
Night Time Departure Compliance	99%	1%	99%	1%
Total Runway 30 Night Turbojet Departures	3,571	46	3,266	35
Runway 12 Night Departure Compliance	96%	4%	98%	2%
Total Runway 12 Night Turbojet Departures	64	3	134	3
Runway 30 East Turn Departure Compliance	100%	0%	100%	0%
Total Runway 30 East Turn Departures	3,953	1	3,939	0
100 Degree Radial Turbojet Landing Compliance	98%	2%	99%	1%
Total 100 Degree Radial Turbojet Landings	749	13	835	5
Engine Runup Program Compliance	100%	0%	100%	0%
Total Evening and Nighttime Engine Runups	9	0	5	0
Note: N/C means non-compliant. Percentage values are rounded out.				

Operation Details	
Beacon Code:	3373
AC Type:	H25C
Operation Type:	Departure
Runway:	28L
Date/Time:	12/13/2016 8:26:14 AM

© 2004 GDT, Inc. and its licensors, Rel. 07/2004
 © MapBox © OpenStreetMap



Runway 28R/L Jet Departure NAP

2024Q2
93% Compliance
(2,654 total departures)
(180 non-compliant)

2023Q2
93% Compliance
(2,220 total departures)
(159 non-compliant)

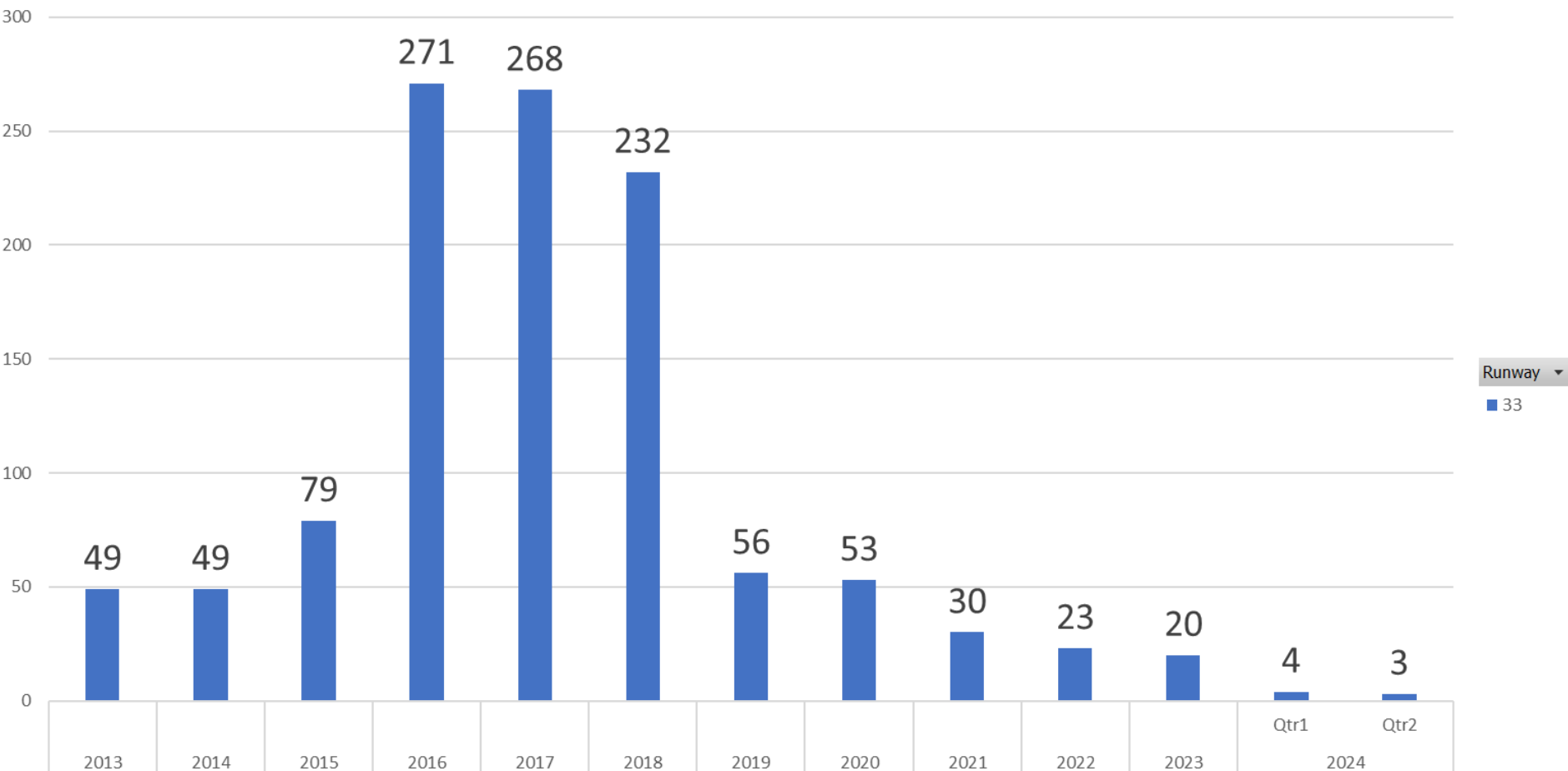
Heading: 325
 Elevation: 15

■	Arrivals
■	Departures
■	Touch and Go
■	Overflights

RUNWAY 33 JET DEPARTURES SECOND Quarter 2024

Count of Aircraft Type

Runway 33 Jet Departure Trend Analysis



Years ▾ Quarters ▾ Date Time ▾

+ -

Operation Details	
Beacon Code:	4564
AC Type:	C550
Operation Type:	Arrival
Runway:	10R
Date/Time:	12/15/2016 8:15:42 PM

© 2004 GDI, Inc. and its licensors, Rel. 07/2004
© MapBox © OpenStreetMap

Runway 10R/L Jet Landing NAP

2024Q2
88% Compliance
(94 total landings)
(11 non-compliant)

2023Q2
75% Compliance
(48 total landings)
(12 non-compliant)

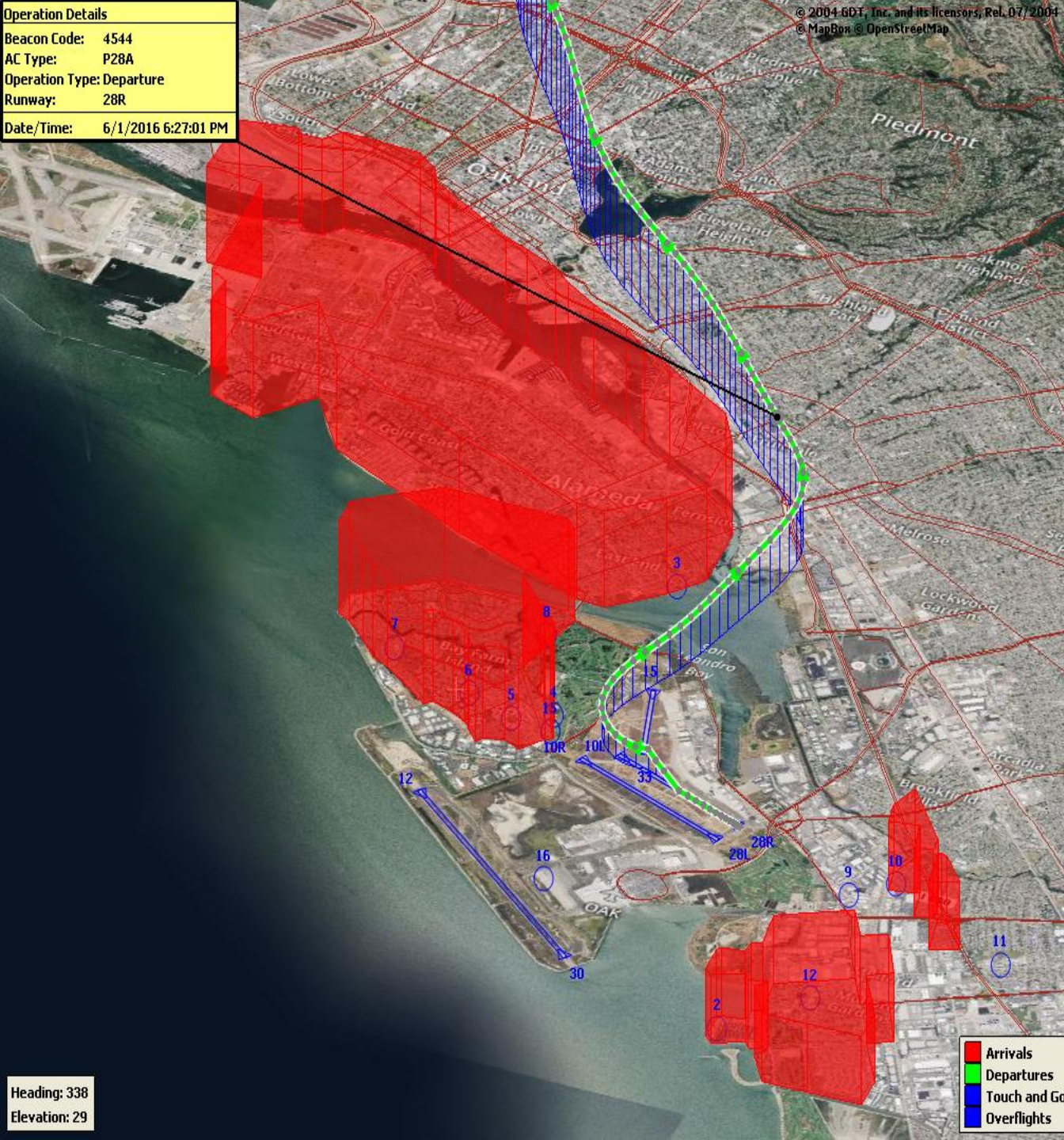
Heading: 325
Elevation: 15

Arrivals	Red
Departures	Green
Touch and Go	Blue
Overflights	Dark Blue



Operation Details	
Beacon Code:	4544
AC Type:	P28A
Operation Type:	Departure
Runway:	28R
Date/Time:	6/1/2016 6:27:01 PM

© 2004 GDT, Inc. and its licensors, Rel. 07/2004
 © MapBox © OpenStreetMap



VFR Aircraft Departure NAP

2024Q2
97% Compliance
(319 total departures)
(10 non-compliant)

2023Q2
96% Compliance
(260 total departures)
(11 non-compliant)

■	Arrivals
■	Departures
■	Touch and Go
■	Overflights

Heading: 338
 Elevation: 29

Operation Details
Beacon Code: 3351
AC Type: PC12
Operation Type: Departure
Runway: 28R
Date/Time: 12/13/2016 6:02:33 AM

© 2004 GDT, Inc. and its licensors, Rel. 07/2004
© MapBox © OpenStreetMap

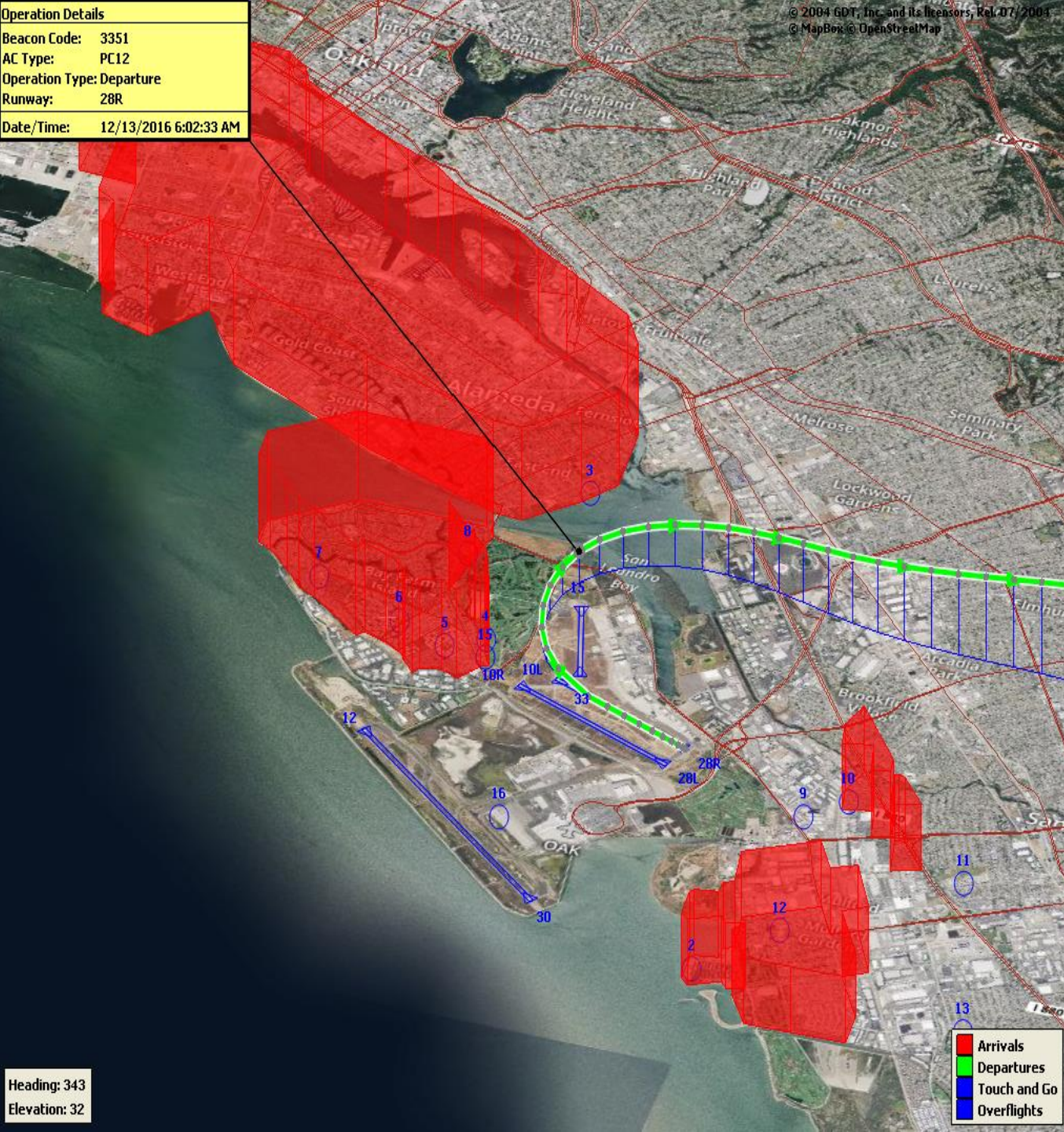
North Field Quiet Hours NAP

2024Q2
90% Compliance
(260 total departures)
(27 non-compliant)

2023Q2
86% Compliance
(196 total departures)
(28 non-compliant)

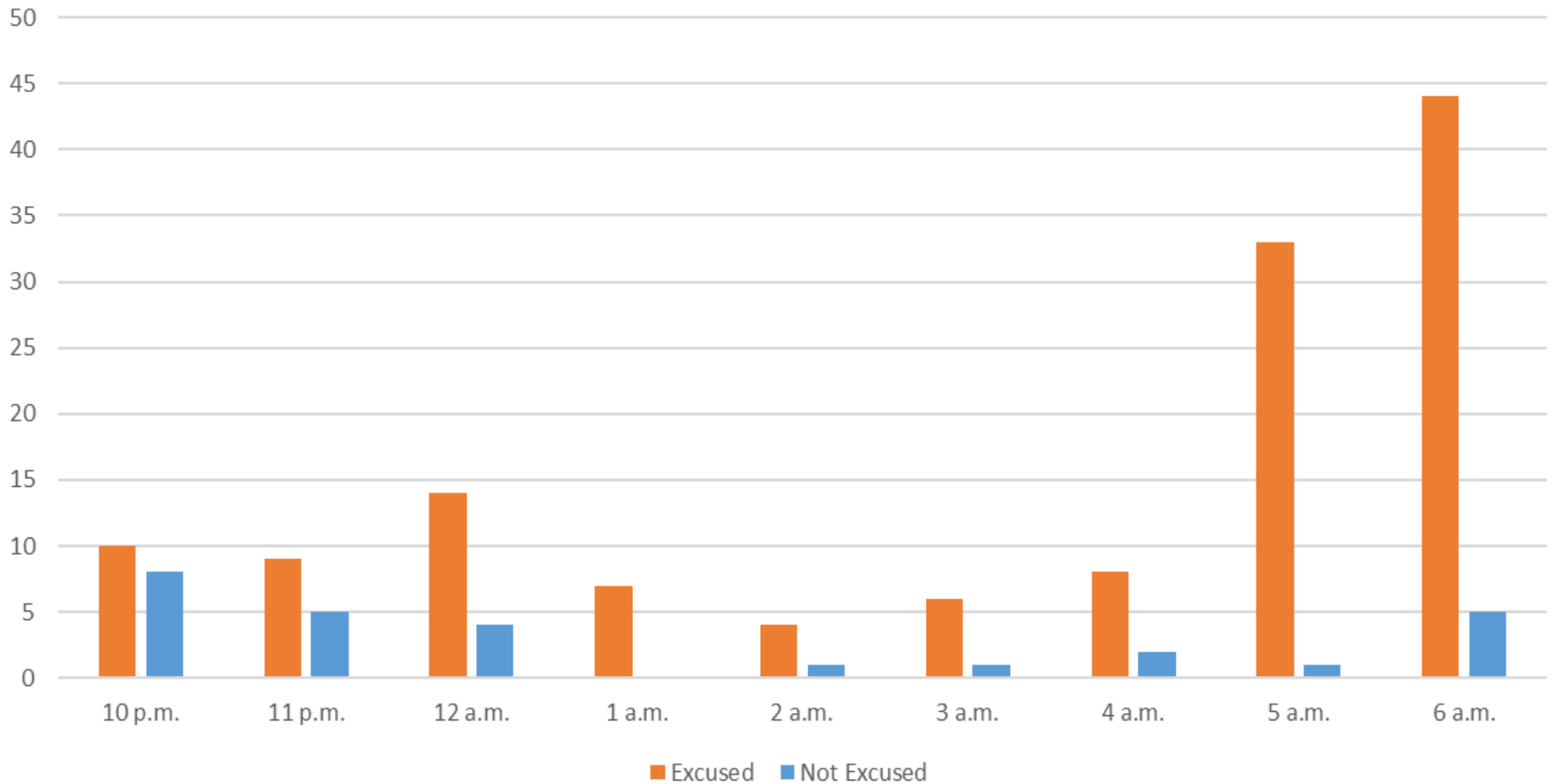
Heading: 343
Elevation: 32

- Arrivals
- Departures
- Touch and Go
- Overflights



Quarterly North Field Quiet Hours NAP Non-Compliant Per Quarter

Excused/Not Excused Violation Count Per Quarter



Operation Details
Beacon Code: 3641
AC Type: B737
Operation Type: Departure
Runway: 30
Date/Time: 8/22/2017 10:16:59 PM



Night Time Departure NAP

2024Q2
99% Compliance
(3,301 total departures)
(35 non-compliant)

*REBAS Gate non-compliant = 35

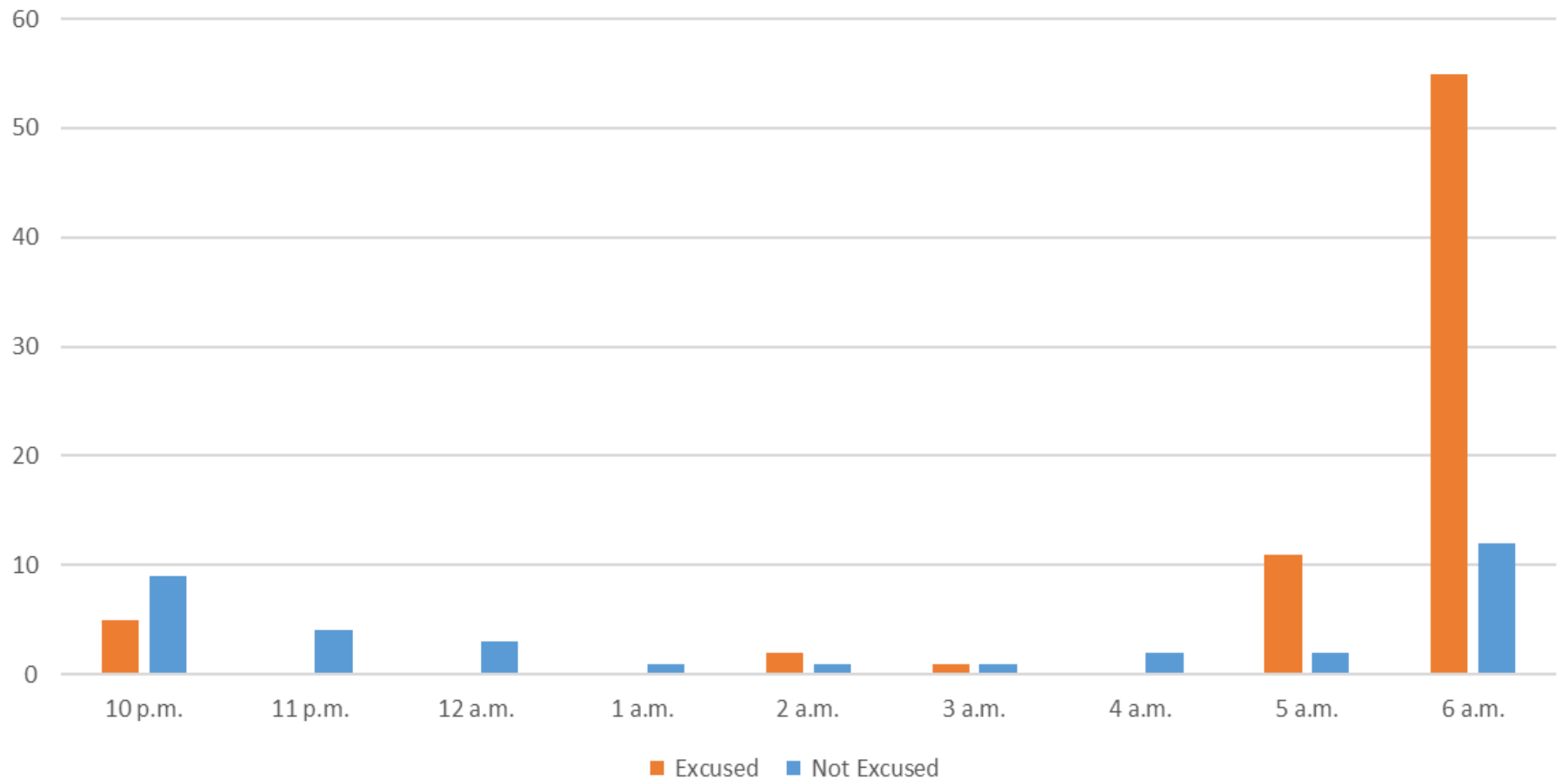
2023Q2
99% Compliance
(3,617 total departures)
(46 non-compliant)

Heading: 349
Elevation: 59

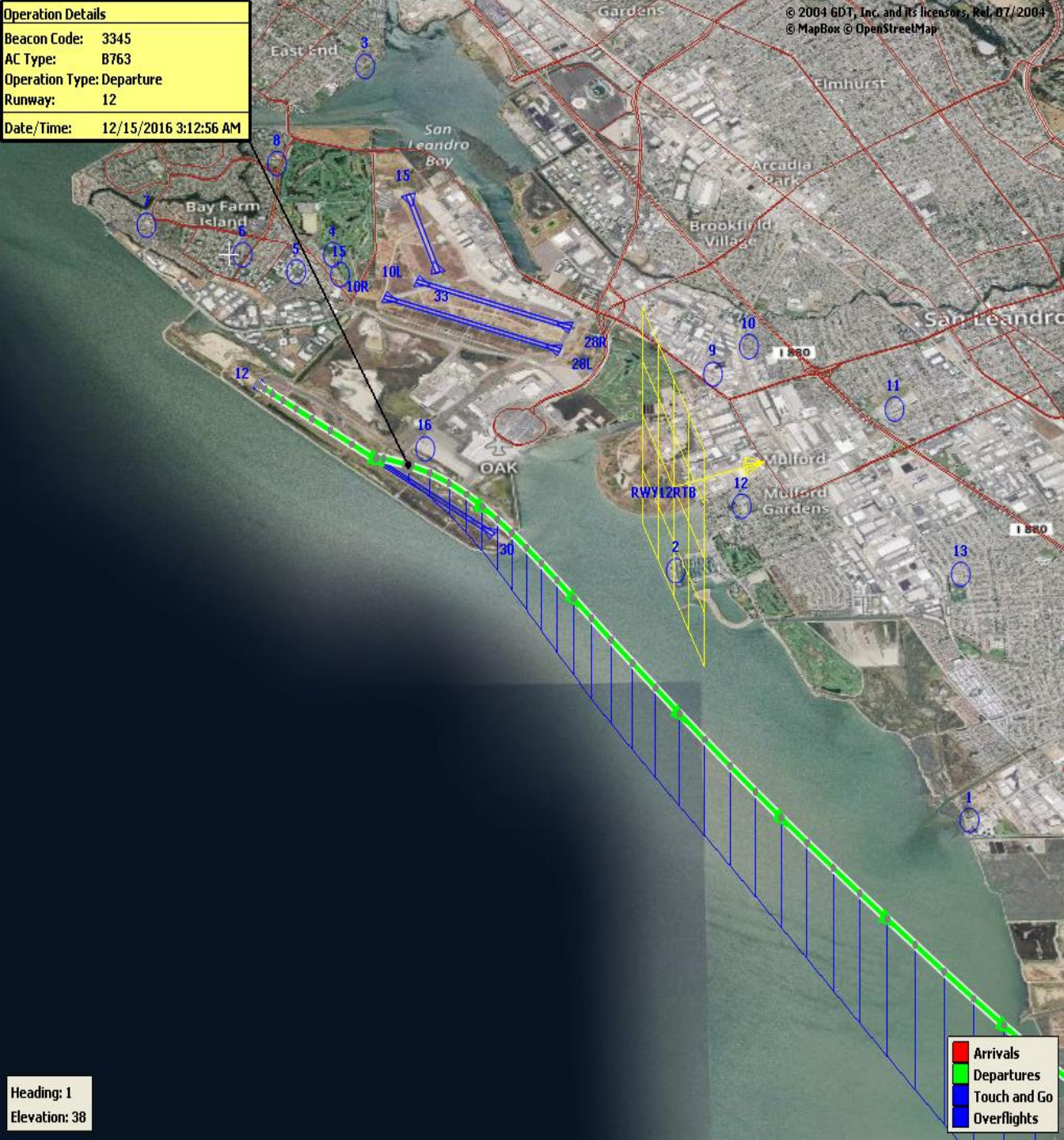
Arrivals
Departures
Touch and Go
Overflights

Quarterly Night Time NAP Non-Compliant Count Per Quarter

Excused/Not Excused Violation Count Per Quarter



Operation Details
Beacon Code: 3345
AC Type: B763
Operation Type: Departure
Runway: 12
Date/Time: 12/15/2016 3:12:56 AM



Runway 12 Night Departure NAP

2024Q2
98% Compliance
(137 total departures)
(3 non-compliant)

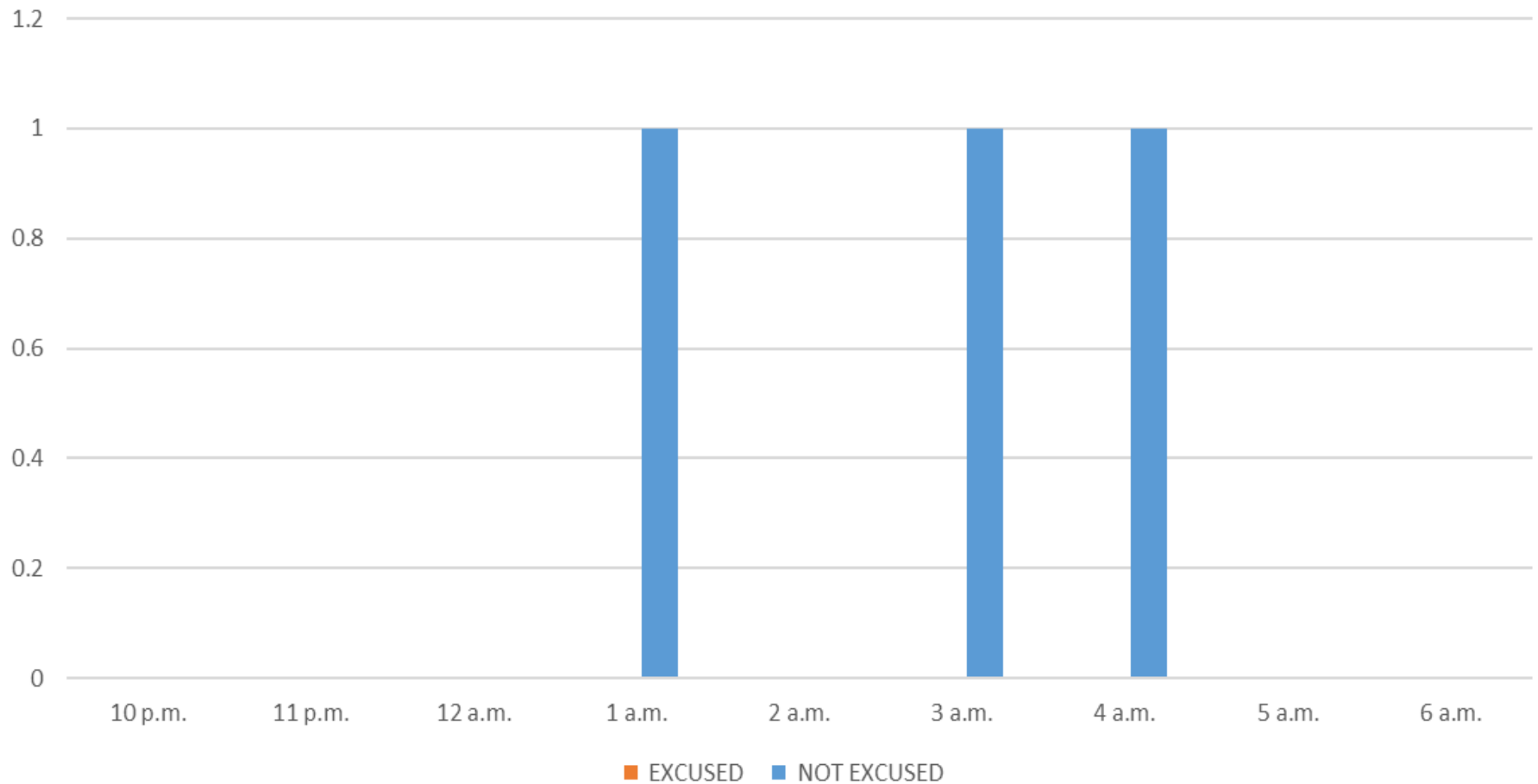
2023Q2
96% Compliance
(67 total departures)
(3 non-compliant)

Arrivals
Departures
Touch and Go
Overflights

Heading: 1
Elevation: 38

Quarterly Runway 12 Night Departure Non-Compliant Count Per Quarter

Excused/Not Excused Violation Count Per Quarter



Operation Details	
Beacon Code:	3374
AC Type:	B737
Operation Type:	Departure
Runway:	30
Date/Time:	1/7/2019 8:57:05 AM

© 2004 GDT, Inc. and its licensors, Rel. 07/2004
 © MapBox © OpenStreetMap

Runway 30 Bay Farm Right Turn NAP



2024Q2
100% Compliance
(15,699 total departures)
(6 non-compliant)

2023Q2
100% Compliance
(16,663 total departures)
(2 non-compliant)

Heading: 299
 Elevation: 36

- Arrivals
- Departures
- Touch and Go
- Overflights

Operation Details
Beacon Code: 3231
AC Type: B738
Operation Type: Departure
Runway: 30
Date/Time: 4/7/2024 8:05:16 PM



Runway 30 East Turn NAP

2024Q2
100% Compliance
(3,939 total departures)
(0 non-compliant)

*Excused Departures = 6

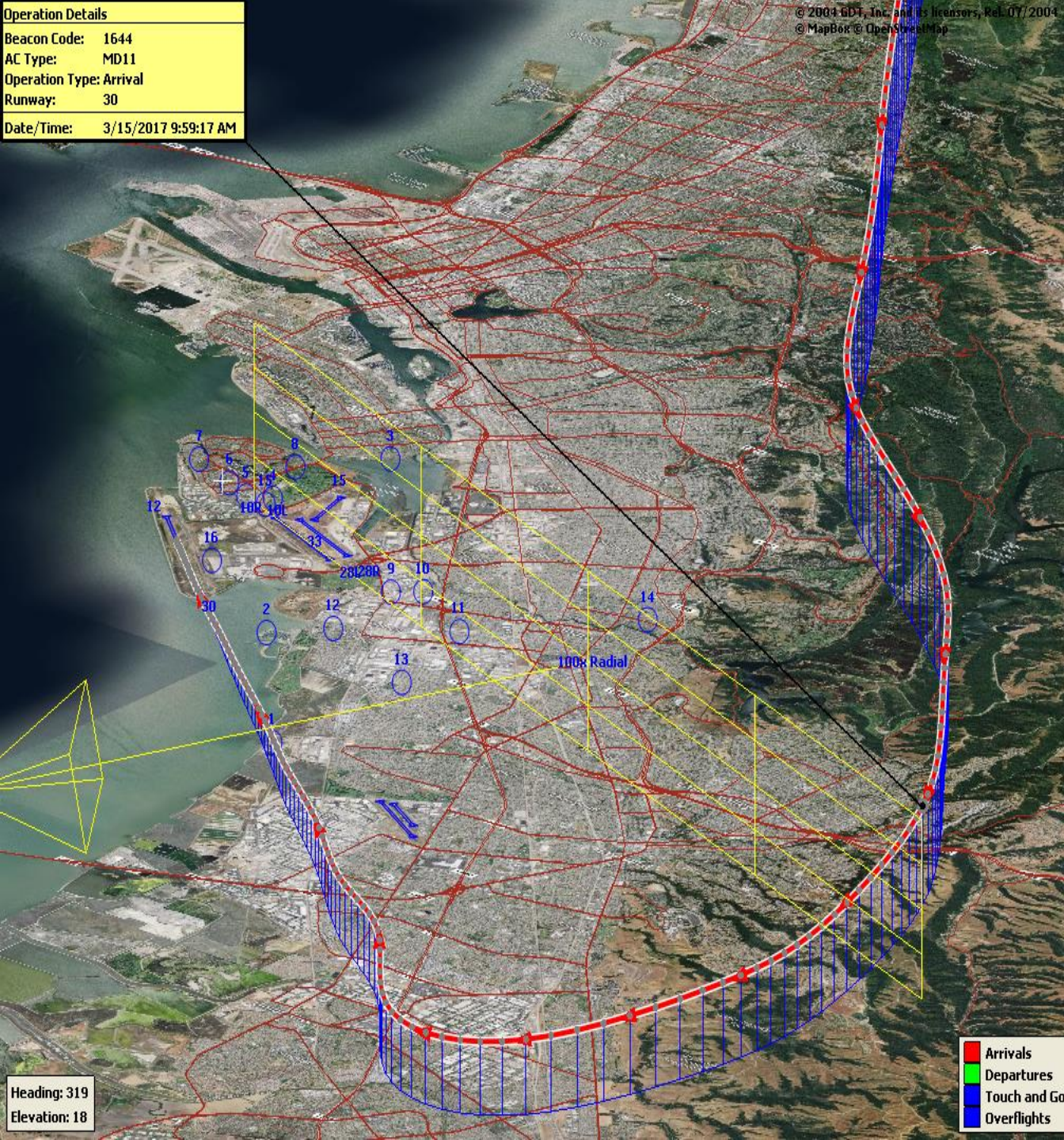
2023Q2
100% Compliance
(3,954 total departures)
(1 non-compliant)

Heading 310°
Elevation 24°

Operation Mode
Arrivals
Departures
Overflights
Ground Operation
Touch and Go

Operation Details
Beacon Code: 1644
AC Type: MD11
Operation Type: Arrival
Runway: 30
Date/Time: 3/15/2017 9:59:17 AM

© 2004 GDT, Inc. and its licensors, Rel. 07/2004
© MapBox © OpenStreetMap



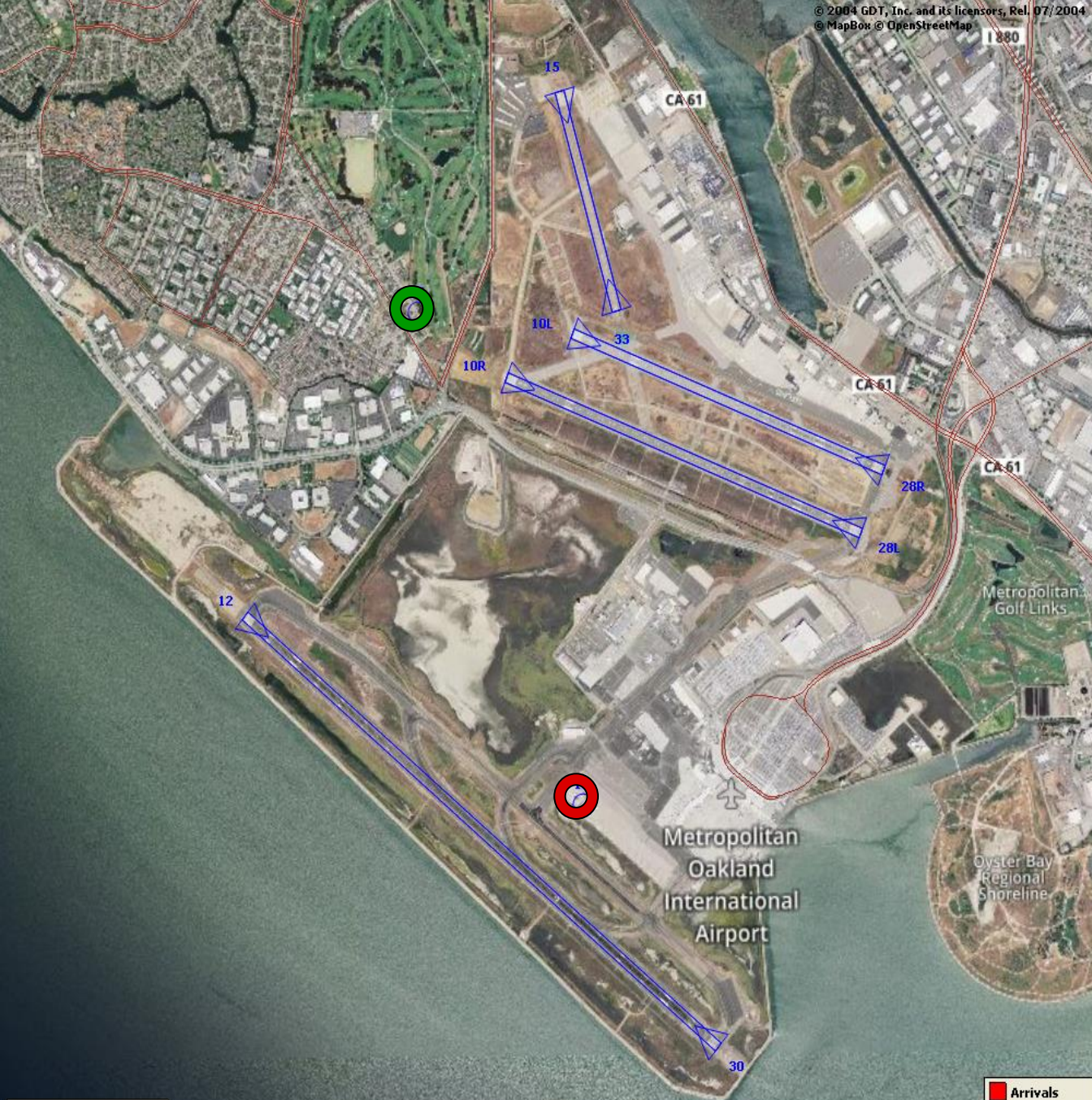
100 Degree Radial At 3,000 ft. NAP

2024Q2
99% Compliance
(840 total landings)
(5 non-compliant)

2023Q2
98% Compliance
(762 total landings)
(13 non-compliant)

■ Arrivals
■ Departures
■ Touch and Go
■ Overflights

Heading: 319
Elevation: 18



© 2004 GDT, Inc. and its licensors, Rel. 07/2004
 © MapBox © OpenStreetMap

Engine Run-up NAP

2024Q1
100% Compliance
(4 engine run-ups)*
(0 non-compliant)

2023Q1
100% Compliance
(8 engine run-ups)
(0 non-compliant)

***Only above idle-power run-ups recorded.**

	Arrivals
	Departures
	Touch and Go
	Overflights

**Compliance Monitoring Quarterly Summary Comparison
Second Quarter 2024 - Quarter-to-Quarter**

	2024Q1		2024Q2	
	Compl.	NC	Compl.	NC
Runway 28R/L Jet Departure Compliance	94%	7%	93%	7%
Total Airport-wide Corporate Jet Departures	2,547	156	2,474	180
Runway 10R/L Jet Landing Compliance	87%	13%	88%	12%
Total Southeast Plan Corporate Jet Landings	490	75	83	11
North Field VFR Departure Compliance	95%	5%	97%	3%
Total Runways 28R/L & 33 Departures	175	9	309	10
North Field Quiet Hours Compliance	83%	17%	90%	10%
Total North Field Quiet Hours Departures	174	35	233	27
Runway 30 BFI Right Turn Departure Compliance	100%	0%	100%	0%
Total Runway 30 Turbojet Departures	12,780	1	15,693	6
Night Time Departure Compliance	99%	1%	99%	1%
Total Runway 30 Night Turbojet Departures	2,507	22	3,266	35
Runway 12 Night Departure Compliance	100%	0%	98%	2%
Total Runway 12 Night Turbojet Departures	437	0	134	3
Runway 30 East Turn Departure Compliance	100%	0%	100%	0%
Total Runway 30 East Turn Departures	3,083	4	3,939	0
100 Degree Radial Turbojet Landing Compliance	99%	1%	99%	1%
Total 100 Degree Radial Turbojet Landings	610	4	835	5
Engine Runup Program Compliance	100%	0%	100%	0%
Total Evening and Nighttime Engine Runups	4	0	5	0

Note: NC means non-compliant. Percentage values are rounded out.

Table 1. North Field Night Aircraft Departure SEL Noise Measurements
Total Aircraft Departures = 260

Second Quarter 2024 (10:00 p.m. to 7:00 a.m.)

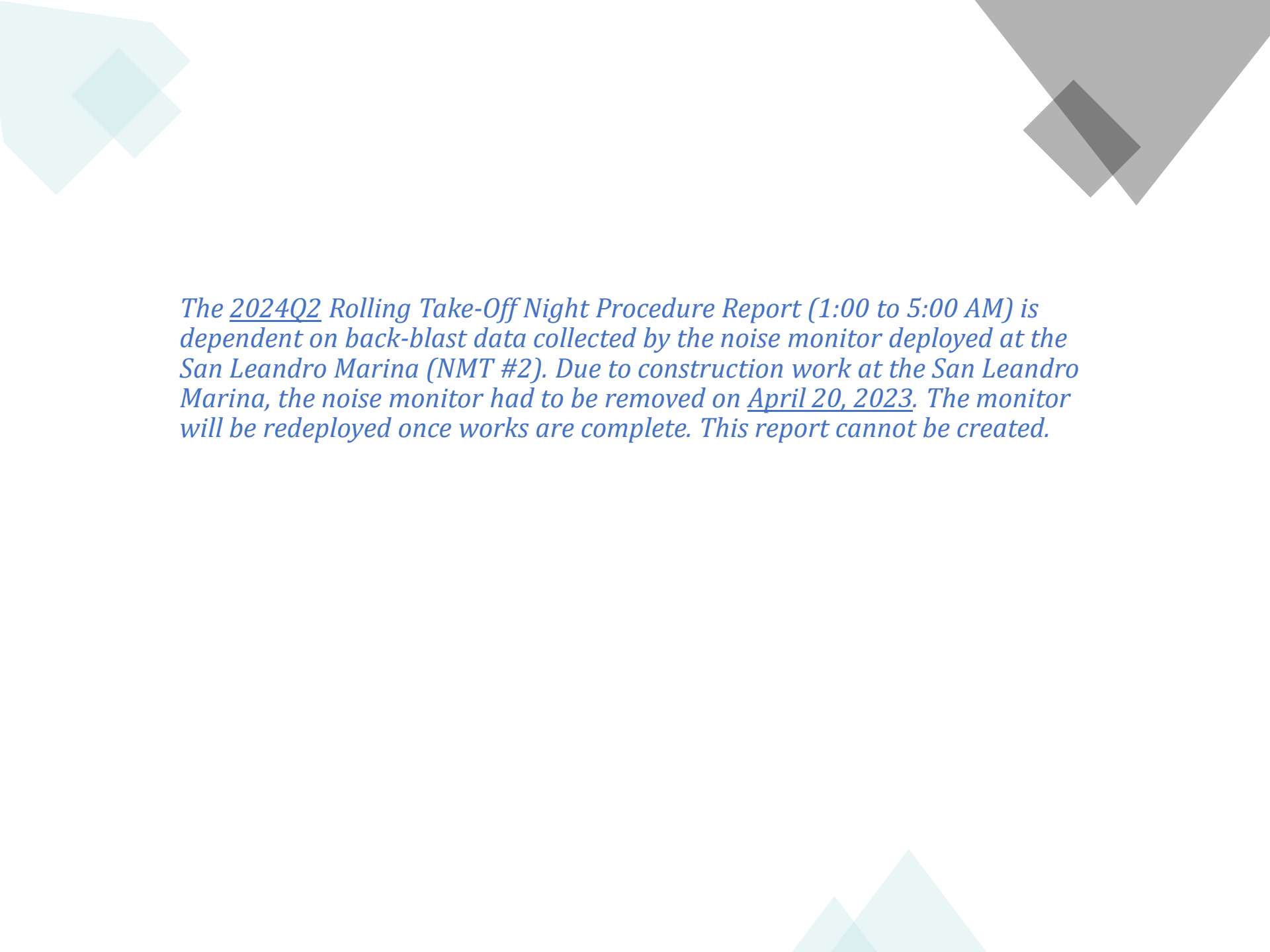
NMT Number	Aircraft Noise Events Below SEL 80 dBA	Aircraft Noise Events SEL 80 - 84.9 dBA			Aircraft Noise Events SEL 85 - 89.9 dBA			Aircraft Noise Events SEL ≥ 90 dBA			Total Aircraft Noise Events
		Amount	Nightly Average	As Percentage of Departures	Amount	Nightly Average	As Percentage of Departures	Amount	Nightly Average	As Percentage of Departures	
1	0	0	0.0	0.0%	0	0.0	0.0%	0	0.0	0.0%	0
2	0	0	0.0	0.0%	0	0.0	0.0%	0	0.0	0.0%	0
3	57	4	0.0	0.7%	1	0.0	0.2%	0	0.0	0.0%	62
4	69	60	0.7	10.6%	46	0.5	8.1%	64	0.7	11.3%	239
5	88	23	0.3	4.1%	23	0.3	4.1%	74	0.8	13.1%	208
6	68	19	0.2	3.4%	37	0.4	6.5%	50	0.6	8.8%	174
7	25	25	0.3	4.4%	51	0.6	9.0%	10	0.1	1.8%	111
8	65	34	0.4	6.0%	1	0.0	0.2%	0	0.0	0.0%	100
9	14	4	0.0	0.7%	1	0.0	0.2%	4	0.0	0.7%	23
10	64	9	0.1	1.6%	3	0.0	0.5%	2	0.0	0.4%	78
11	2	2	0.0	0.4%	3	0.0	0.5%	1	0.0	0.2%	8
12	7	2	0.0	0.4%	1	0.0	0.2%	0	0.0	0.0%	10
13	6	0	0.0	0.0%	1	0.0	0.2%	0	0.0	0.0%	7
14	34	0	0.0	0.0%	0	0.0	0.0%	0	0.0	0.0%	34
All NMTs	499	182	2	0	168	2	0	205	2	0	1054

Table 2. Aircraft SEL Noise Measurements in Alameda - Total Aircraft Departures = 247

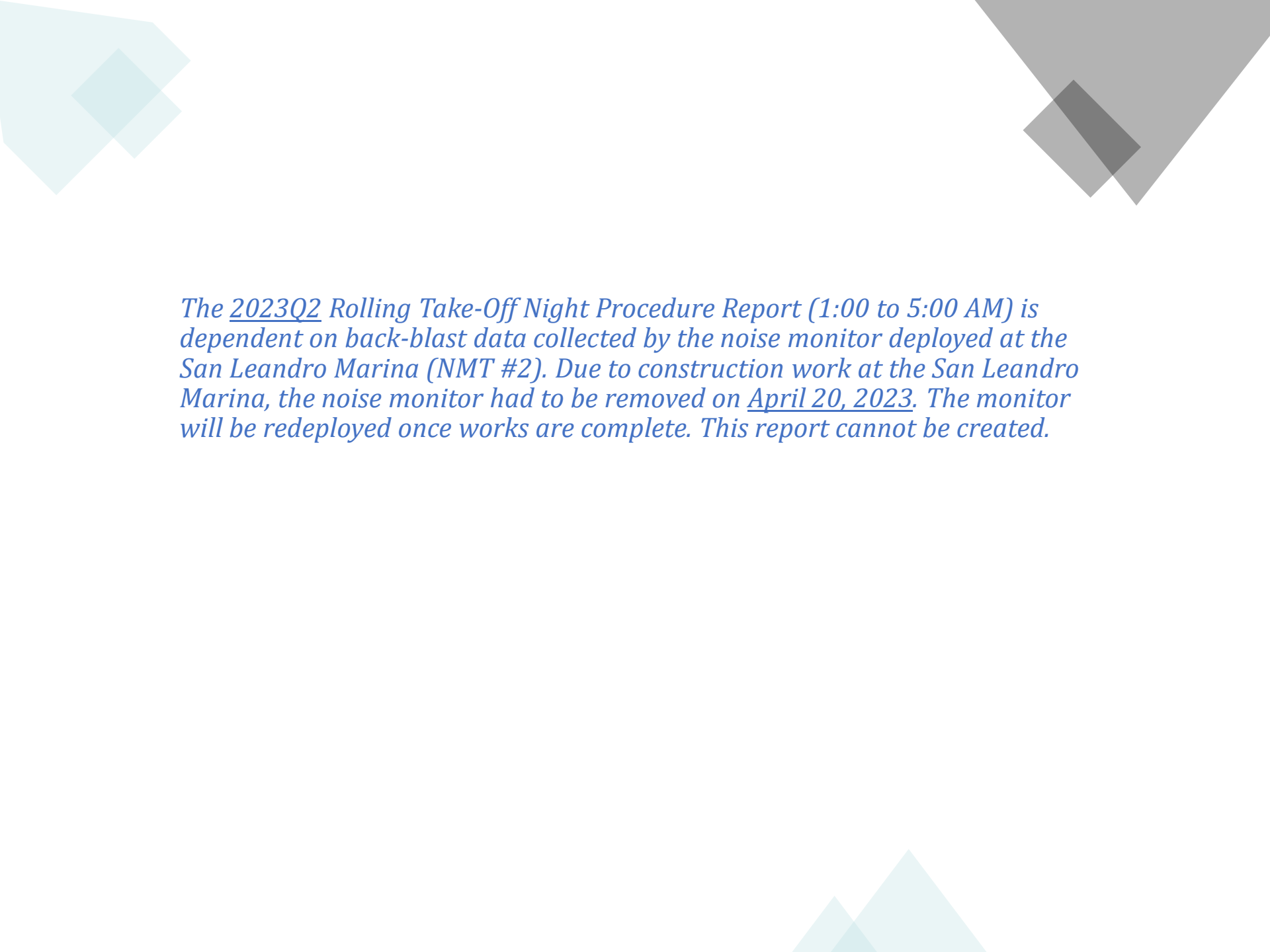
Second Quarter 2024 (10:00 p.m. to 7:00 a.m.)											
NMT Number	Aircraft Noise Events Below SEL 80 dBA	Aircraft Noise Events SEL 80 - 84.9 dBA			Aircraft Noise Events SEL 85 - 89.9 dBA			Aircraft Noise Events SEL ≥ 90 dBA			Total Aircraft Noise Events
		Amount	Nightly Average	As Percentage of Departures	Amount	Nightly Average	As Percentage of Departures	Amount	Nightly Average	As Percentage of Departures	
3	57	4	0.0	1.7%	1	0.0	0.4%	0	0.0	0.0%	62
4	69	60	0.7	25.1%	46	0.5	19.2%	64	0.7	26.8%	239
5	88	23	0.3	9.6%	23	0.3	9.6%	74	0.8	31.0%	208
6	68	19	0.2	7.9%	37	0.4	15.5%	50	0.6	20.9%	174
7	25	25	0.3	10.5%	51	0.6	21.3%	10	0.1	4.2%	111
8	65	34	0.4	14.2%	1	0.0	0.4%	0	0.0	0.0%	100
Total	372	165	1.8		159	1.8		198	2.2		894

Table 3. Aircraft SEL Noise Measurements in San Leandro - Total Aircraft Departures = 13

Second Quarter 2024 (10:00 p.m. to 7:00 a.m.)											
NMT Number	Aircraft Noise Events Below SEL 80 dBA	Aircraft Noise Events SEL 80 - 84.9 dBA			Aircraft Noise Events SEL 85 - 89.9 dBA			Aircraft Noise Events SEL ≥ 90 dBA			Total Aircraft Noise Events
		Amount	Nightly Average	As Percentage of Departures	Amount	Nightly Average	As Percentage of Departures	Amount	Nightly Average	As Percentage of Departures	
2	0	0	0.0	0.0%	0	0.0	0.0%	0	0.0	0.0%	0
9	14	4	0.0	1.2%	1	0.0	0.3%	4	0.0	1.2%	23
10	64	9	0.1	2.7%	3	0.0	0.9%	2	0.0	0.6%	78
11	2	2	0.0	0.6%	3	0.0	0.9%	1	0.0	0.3%	8
12	7	2	0.0	0.6%	1	0.0	0.3%	0	0.0	0.0%	10
13	6	0	0.0	0.0%	1	0.0	0.3%	0	0.0	0.0%	7
14	34	0	0.0	0.0%	0	0.0	0.0%	0	0.0	0.0%	34
Total	127	17	0.2		9	0.1		7	0.1		160



The 2024Q2 Rolling Take-Off Night Procedure Report (1:00 to 5:00 AM) is dependent on back-blast data collected by the noise monitor deployed at the San Leandro Marina (NMT #2). Due to construction work at the San Leandro Marina, the noise monitor had to be removed on April 20, 2023. The monitor will be redeployed once works are complete. This report cannot be created.



The 2023Q2 Rolling Take-Off Night Procedure Report (1:00 to 5:00 AM) is dependent on back-blast data collected by the noise monitor deployed at the San Leandro Marina (NMT #2). Due to construction work at the San Leandro Marina, the noise monitor had to be removed on April 20, 2023. The monitor will be redeployed once works are complete. This report cannot be created.

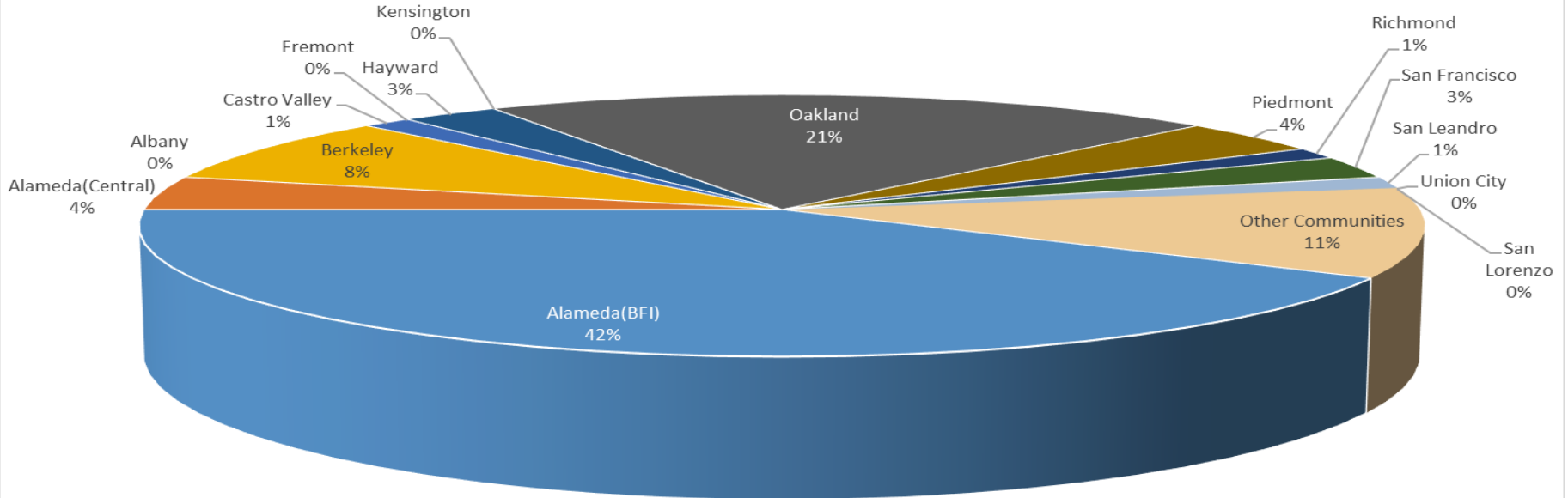
**San Francisco Bay Oakland International Airport
Noise Complaint Summary
April 2024**

Community	Callers	Complaints
Alameda(BFI)	30	986
Alameda(Central)	3	13
Albany	0	0
Berkeley	6	221
Castro Valley	1	18
Fremont	0	0
Hayward	2	16
Kensington	0	0
Oakland	15	1705
Piedmont	3	26
Richmond	1	78
San Francisco	2	2
San Leandro	1	45
Union City	0	0
San Lorenzo	0	0
Other Communities	8	39
Total	72	3149
Complaints by Type		
E-mail		1752
View point App		1397
Complaints by Time of Day		
Day (0700 - 1900)		598
Evening (1900 - 2200)		857
Night (2200 - 0700)		1694
Complaints by Type of Operation		
Arrivals		1660
Departures		1226
Over-flights		165
Touch & Go		98
Not Linked to an Operation		0
Complaints by Type of Aircraft		
Business Jet		273
Helicopter		52
Jet		2334
Military		0
Not Reported (not linked to an aircraft)		0
Other (Type information not available)		37
Propeller		352
Turbo-prop		101

Number of Callers

April 2024

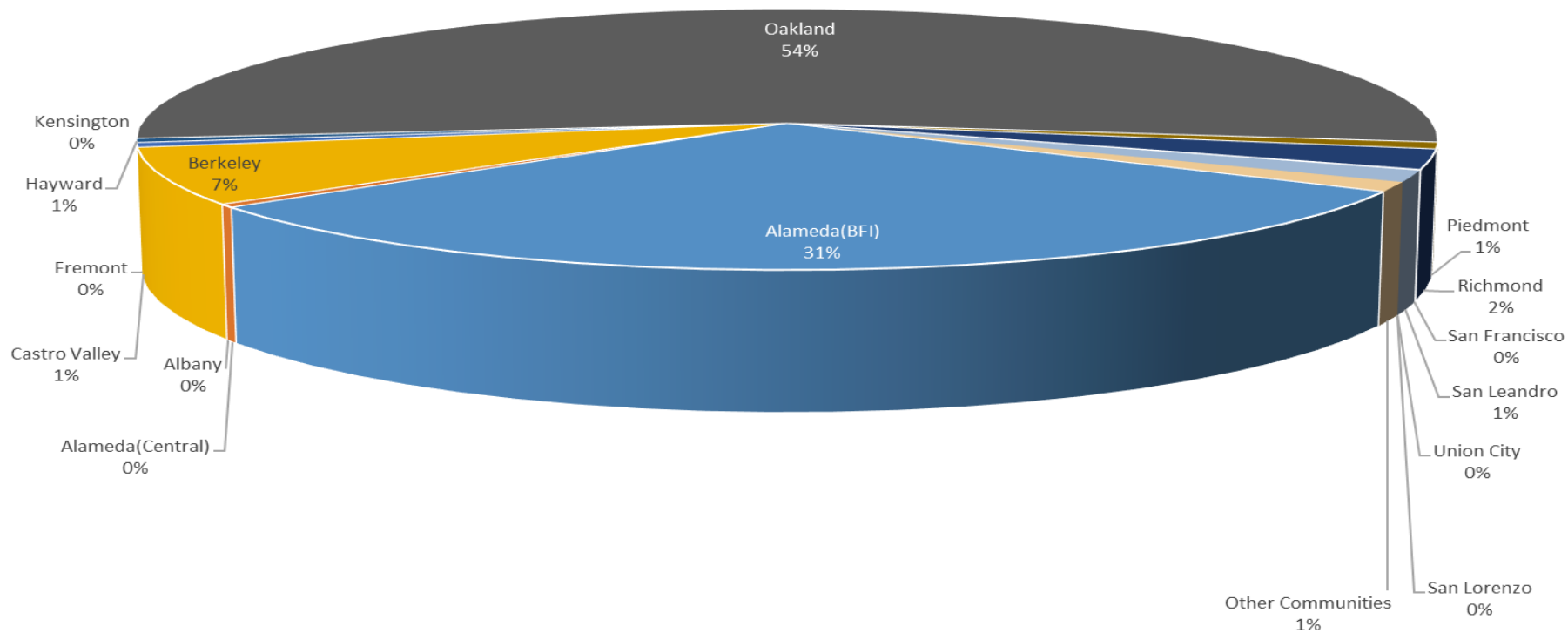
Noise Complaints Summary by Number of Callers



Number of Complaints

April 2024

Noise Complaints Summary by Number of Complaints



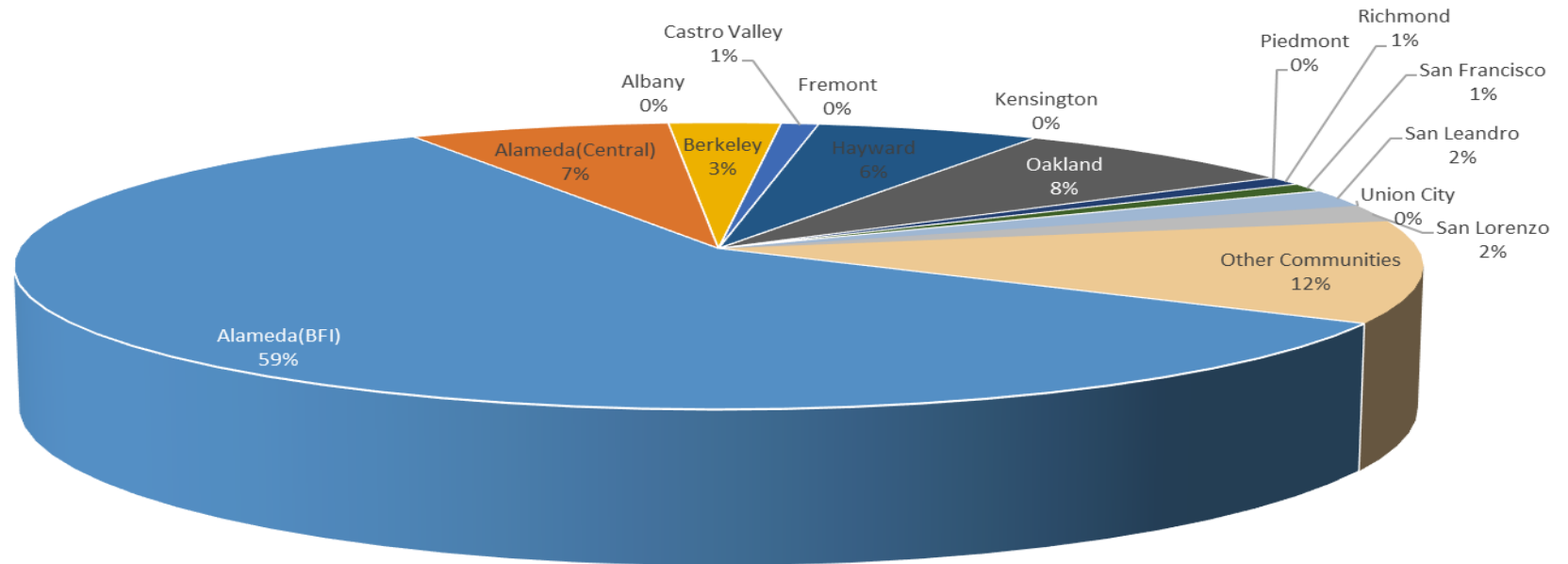
**San Francisco Bay Oakland International Airport
Noise Complaint Summary
May 2024**

Community	Callers	Complaints
Alameda(BFI)	61	1515
Alameda(Central)	7	71
Albany	0	0
Berkeley	3	207
Castro Valley	1	44
Fremont	0	0
Hayward	6	18
Kensington	0	0
Oakland	8	2504
Piedmont	0	0
Richmond	1	45
San Francisco	1	2
San Leandro	2	9
Union City	0	0
San Lorenzo	2	9
Other Communities	12	46
Total	104	4470
Complaints by Type		
E-mail		2557
View point App		1913
Complaints by Time of Day		
Day (0700 - 1900)		888
Evening (1900 - 2200)		702
Night (2200 - 0700)		2880
Complaints by Type of Operation		
Arrivals		2455
Departures		1895
Over-flights		51
Touch & Go		69
Not Linked to an Operation		0
Complaints by Type of Aircraft		
Business Jet		231
Helicopter		40
Jet		3875
Military		0
Not Reported (not linked to an aircraft)		0
Other (Type information not available)		14
Propeller		246
Turbo-prop		64

Number of Callers

May 2024

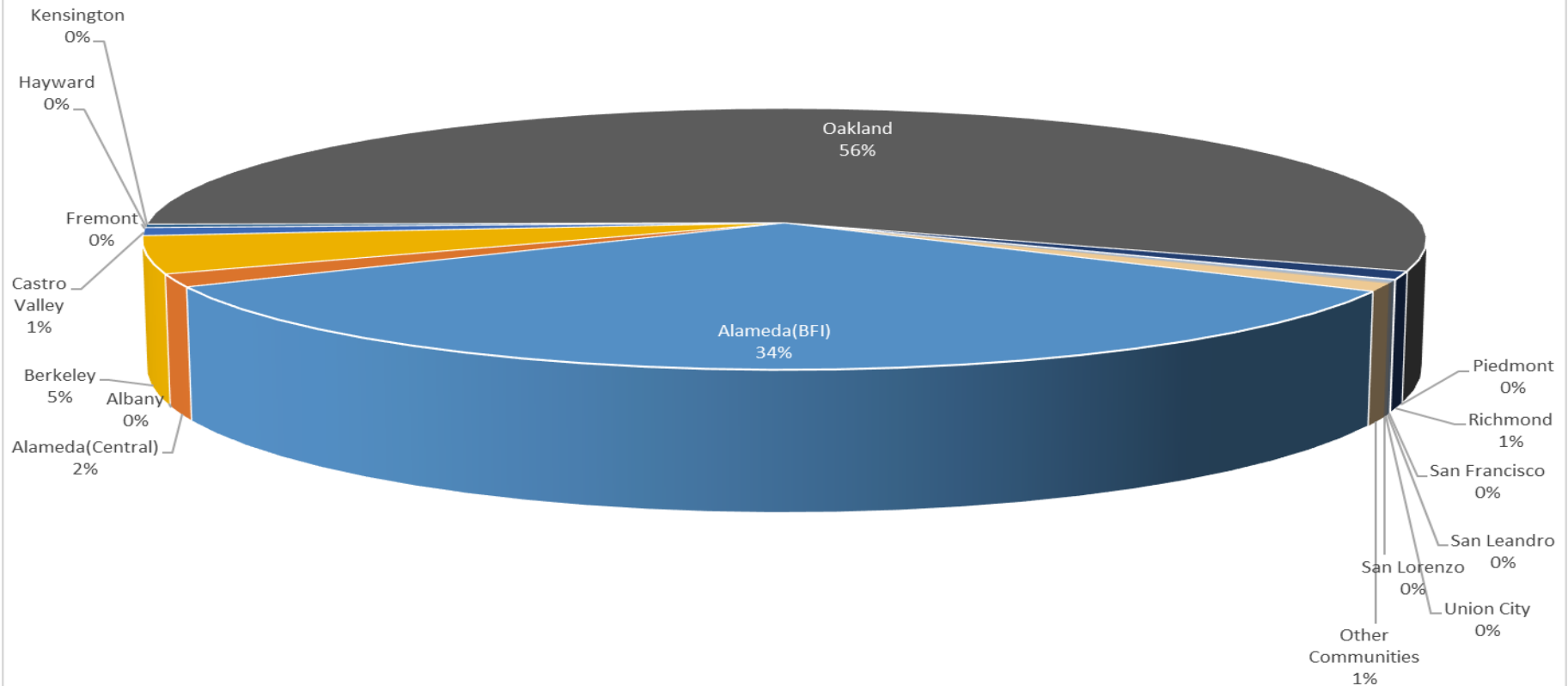
Noise Complaints Summary by Number of Callers



Number of Complaints

May 2024

Noise Complaints Summary by Number of Complaints



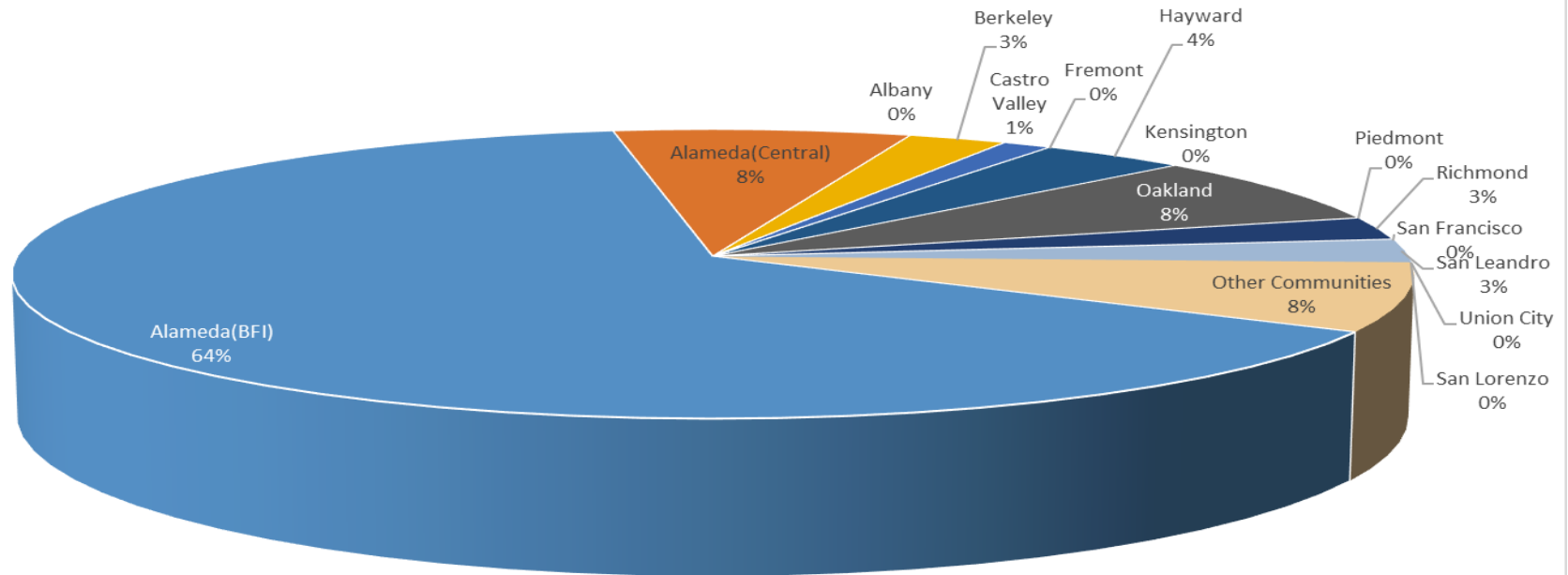
**San Francisco Bay Oakland International Airport
Noise Complaint Summary
June 2024**

Community	Callers	Complaints
Alameda(BFI)	50	1534
Alameda(Central)	6	165
Albany	0	0
Berkeley	2	161
Castro Valley	1	40
Fremont	0	0
Hayward	3	4
Kensington	0	0
Oakland	6	2073
Piedmont	0	0
Richmond	2	187
San Francisco	0	0
San Leandro	2	2
Union City	0	0
San Lorenzo	0	0
Other Communities	6	35
Total	78	4201
Complaints by Type		
E-mail		2261
View point App		1940
Complaints by Time of Day		
Day (0700 - 1900)		1067
Evening (1900 - 2200)		1177
Night (2200 - 0700)		1957
Complaints by Type of Operation		
Arrivals		1919
Departures		2000
Over-flights		162
Touch & Go		120
Not Linked to an Operation		0
Complaints by Type of Aircraft		
Business Jet		567
Helicopter		36
Jet		2973
Military		0
Not Reported (not linked to an aircraft)		0
Other (Type information not available)		10
Propeller		471
Turbo-prop		144

Number of Callers

June 2024

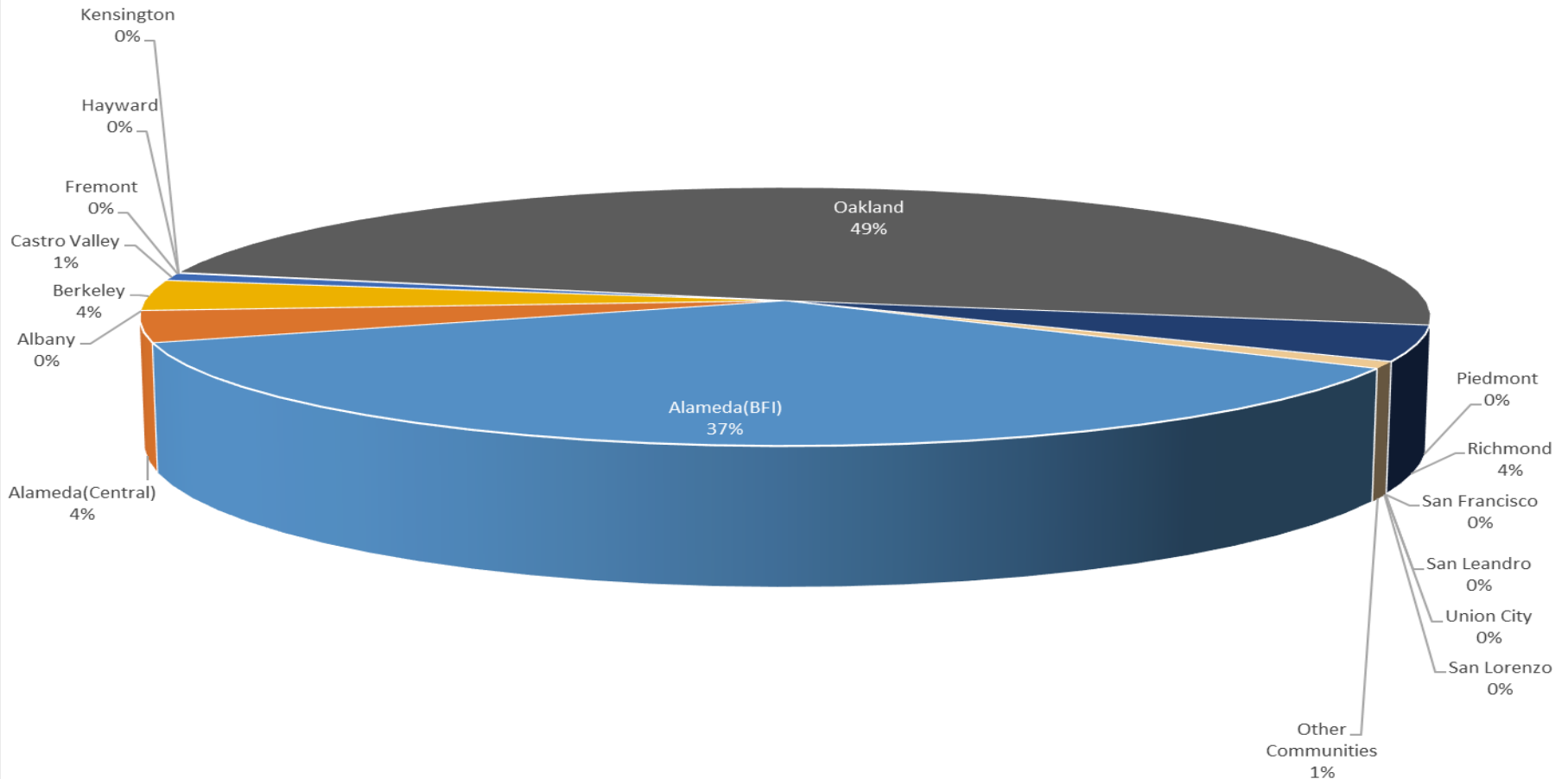
Noise Complaints Summary by Number of Callers

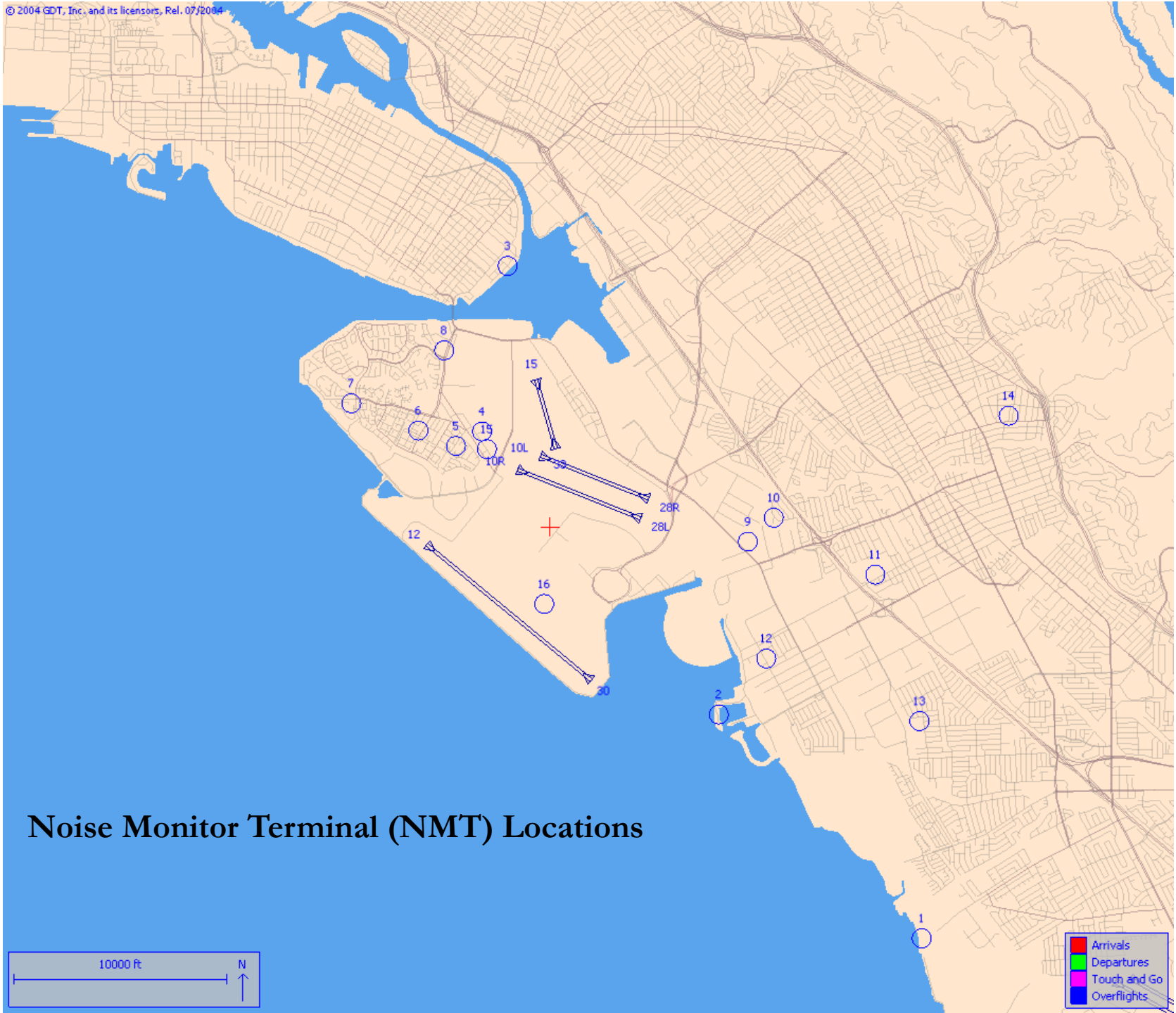


Number of Complaints

June 2024

Noise Complaints Summary by Number of Complaints





Noise Monitor Terminal (NMT) Locations

