

NOISE FORUM SUMMARY

North/South Field Working Groups



NOISE ABATEMENT REPORT

THIRD QUARTER 2024

Disclaimer

The Port of Oakland's Airport Noise and Operations Monitoring System (ANOMS) is the source of the data used in this report. Although ANOMS is a very sophisticated computer program that provides a state-of-the-art solution for collecting aircraft noise complaints. The number of aircraft noise complaints in the report are for informational purposes. Airport staff carefully reviews the data for accuracy and will make corrections whenever possible.

+
•
0

Compliance Monitoring Quarterly Summary Comparison Third Quarter 2024				
	2023Q3		2024Q3	
	Compl.	N/C	Compl.	N/C
Runway 28R/L Jet Departure Compliance	94%	6%	94%	6%
Total Airport-wide Corporate Jet Departures	2,009	128	1,930	127
Runway 10R/L Jet Landing Compliance	96%	4%	100%	0%
Total Southeast Plan Corporate Jet Landings	26	1	0	0
North Field VFR Departure Compliance	95%	5%	94%	6%
Total Runways 28R/L & 33 Departures	242	14	1,455	89
North Field Quiet Hours Compliance	87%	13%	92%	8%
Total North Field Quiet Hours Departures	184	28	314	27
Runway 30 BFI Right Turn Departure Compliance	100%	0%	100%	0%
Total Runway 30 Turbojet Departures	16,391	2	16,113	5
Night Time Departure Compliance	99%	1%	99%	1%
Total Runway 30 Night Turbojet Departures	3,346	29	3,206	28
Runway 12 Night Departure Compliance	100%	0%	100%	0%
Total Runway 12 Night Turbojet Departures	15	0	0	0
Runway 30 East Turn Departure Compliance	100%	0%	100%	0%
Total Runway 30 East Turn Departures	4,166	3	4,129	3
100 Degree Radial Turbojet Landing Compliance	99%	1%	99%	1%
Total 100 Degree Radial Turbojet Landings	932	14	789	8
Engine Runup Program Compliance	82%	18%	100%	0%
Total Evening and Nighttime Engine Runups	11	2	5	0

Operation Details
Beacon Code: 3373
AC Type: H25C
Operation Type: Departure
Runway: 28L
Date/Time: 12/13/2016 8:26:14 AM

© 2004 GDT, Inc. and its licensors, Rel. 07/2004
© MapBox © OpenStreetMap

Runway 28R/L Jet Departure NAP

2024Q3
94% Compliance
(2,057 total departures)
(127 non-compliant)

2023Q3
94% Compliance
(2,137 total departures)
(128 non-compliant)

Heading: 325
Elevation: 15

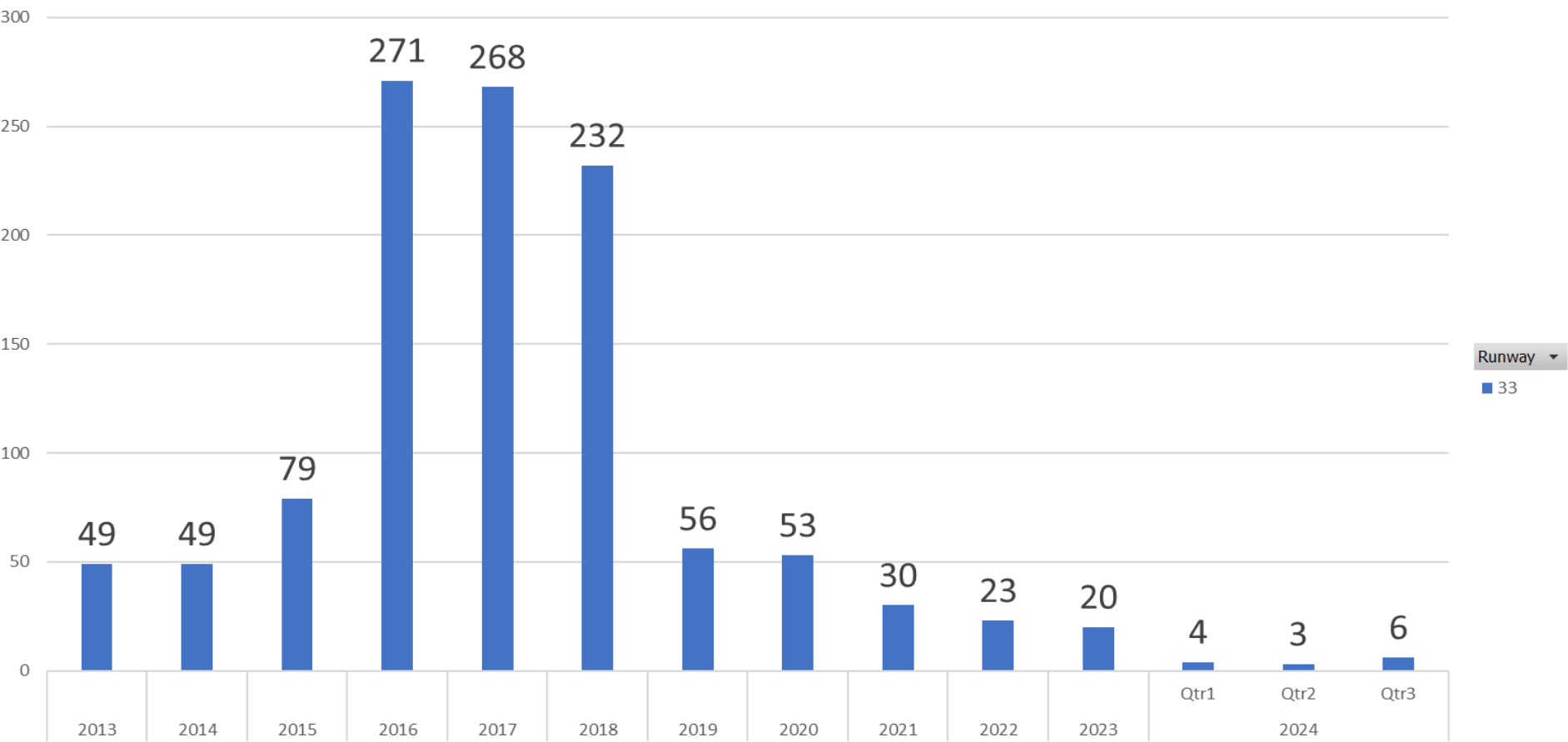
Arrivals
Departures
Touch and Go
Overflights

RUNWAY 33 JET DEPARTURES

THIRD Quarter 2024

Count of Aircraft Type

Runway 33 Jet Departure Trend Analysis



Years Quarters Date Time

+ -

Operation Details	
Beacon Code:	4564
AC Type:	C550
Operation Type:	Arrival
Runway:	10R
Date/Time:	12/15/2016 8:15:42 PM

© 2004 CDL, Inc. and its licensors. Rel. 07/2004
© MapBox © OpenStreetMap

Runway 10R/L Jet Landing NAP

2024Q3

100% Compliance
(0 total landings)
(0 non-compliant)

2023Q3

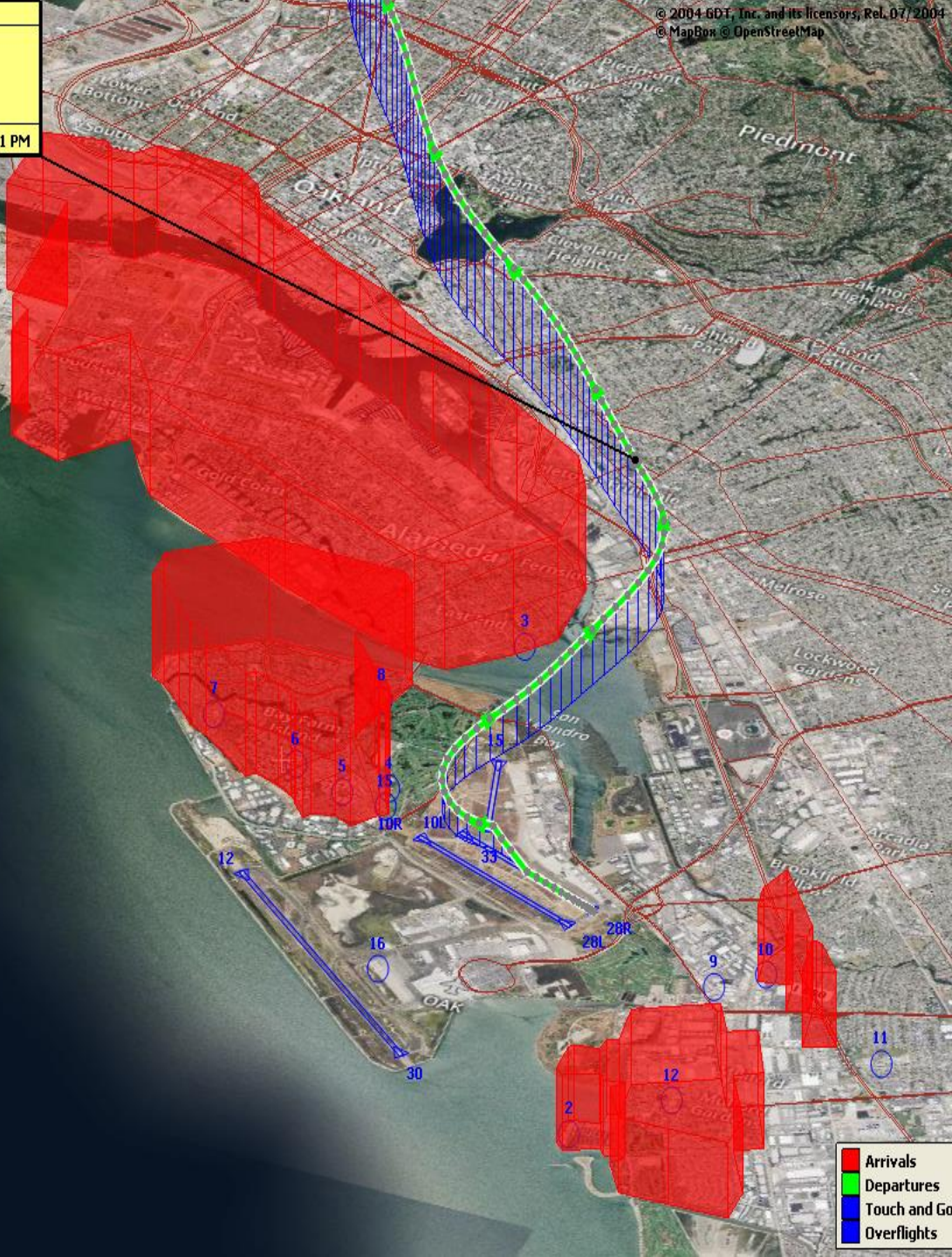
96% Compliance
(27 total landings)
(1 non-compliant)

Heading: 325
Elevation: 15

■ Arrivals
■ Departures
■ Touch and Go
■ Overflights

Operation Details
Beacon Code: 4544
AC Type: P28A
Operation Type: Departure
Runway: 28R
Date/Time: 6/1/2016 6:27:01 PM

Heading: 338
Elevation: 29



VFR Aircraft Departure NAP

2024Q3

94% Compliance
(1,544 total departures)
(89 non-compliant)

2023Q3

95% Compliance
(256 total departures)
(14 non-compliant)

Operation Details
Beacon Code: 3351
AC Type: PC12
Operation Type: Departure
Runway: 28R
Date/Time: 12/13/2016 6:02:33 AM

© 2004 GDT, Inc. and its licensors, Rel. 07/2004
© MapBox © OpenStreetMap

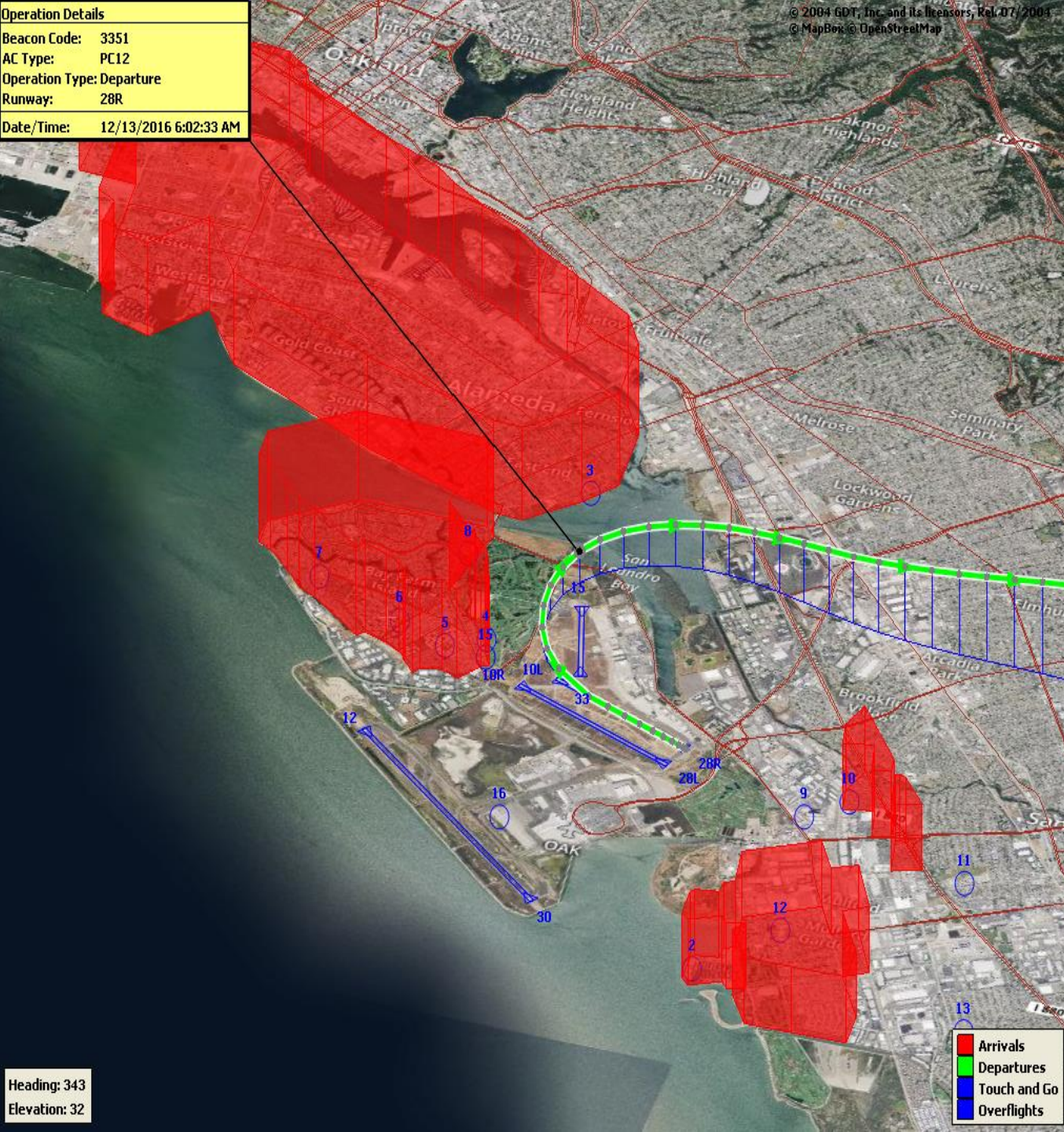
North Field Quiet Hours NAP

2024Q3
92% Compliance
(341 total departures)
(27 non-compliant)

2023Q3
87% Compliance
(212 total departures)
(28 non-compliant)

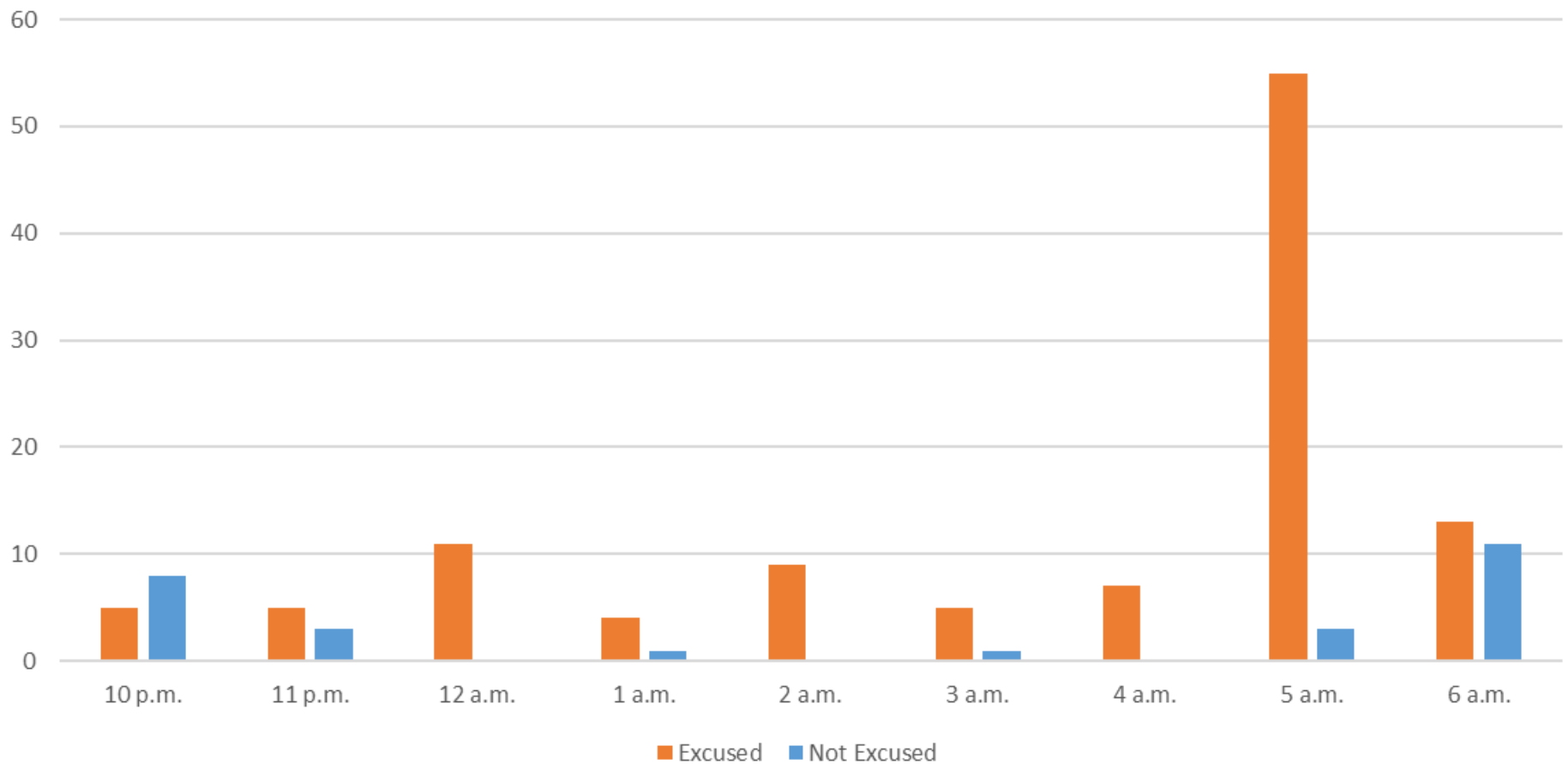
Heading: 343
Elevation: 32

Arrivals
Departures
Touch and Go
Overflights



Quartely North Field Quiet Hours NAP Non-Compliant Per Quarter

Excused/Not Excused Violation Count Per Quarter



Operation Details
 Beacon Code: 3641
 AC Type: B737
 Operation Type: Departure
 Runway: 30
 Date/Time: 8/22/2017 10:16:59 PM



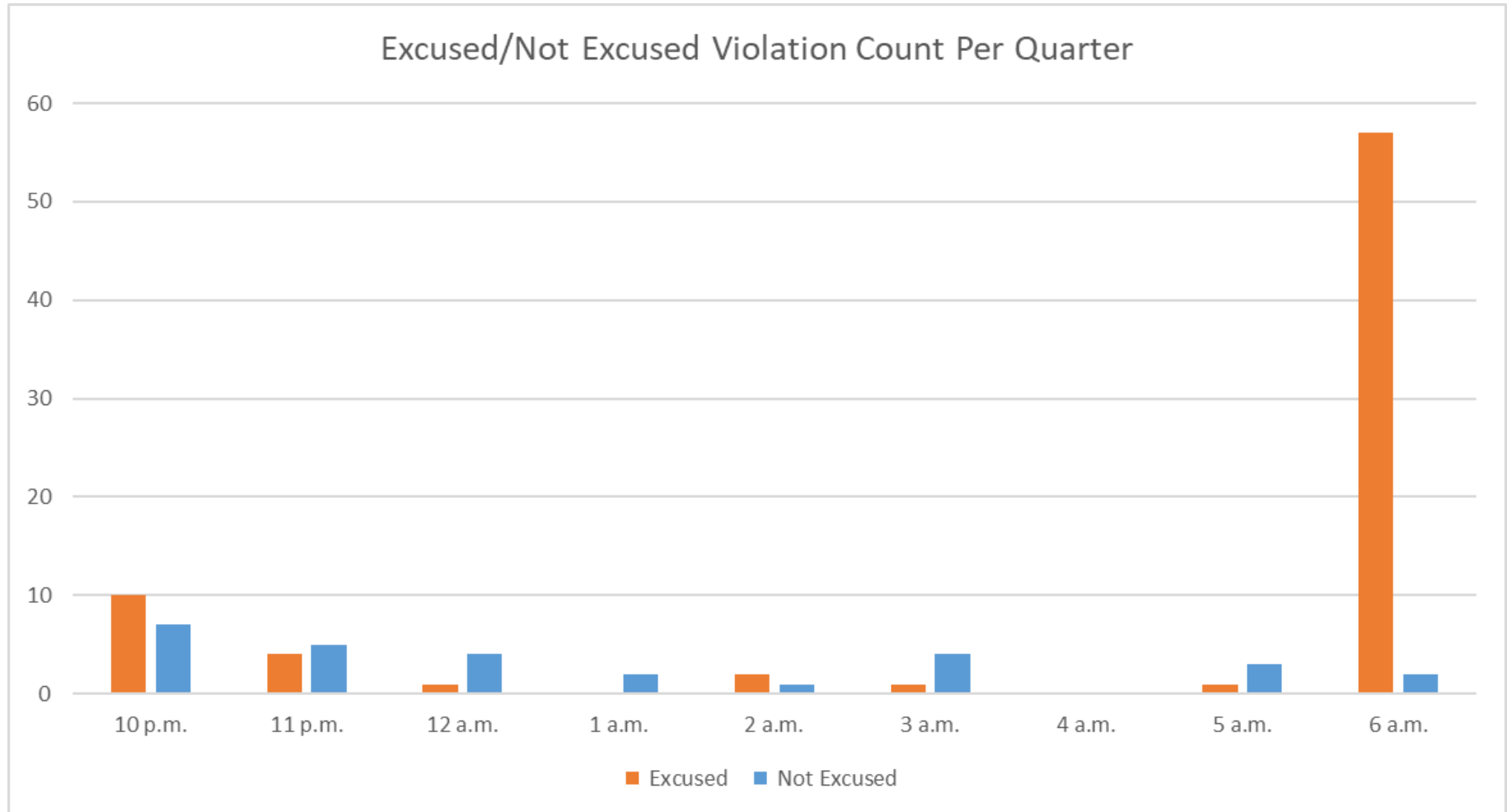
Night Time Departure NAP

2024Q3
99% Compliance
(3,234 total departures)
(28 non-compliant)

*REBAS Gate non-compliant = 25

2023Q3
99% Compliance
(3,375 total departures)
(29 non-compliant)

Quarterly Night Time NAP Non-Compliant Count Per Quarter



Operation Details
Beacon Code: 3345
AC Type: B763
Operation Type: Departure
Runway: 12
Date/Time: 12/15/2016 3:12:56 AM

Heading: 1
Elevation: 38



Runway 12 Night Departure NAP

2024Q3

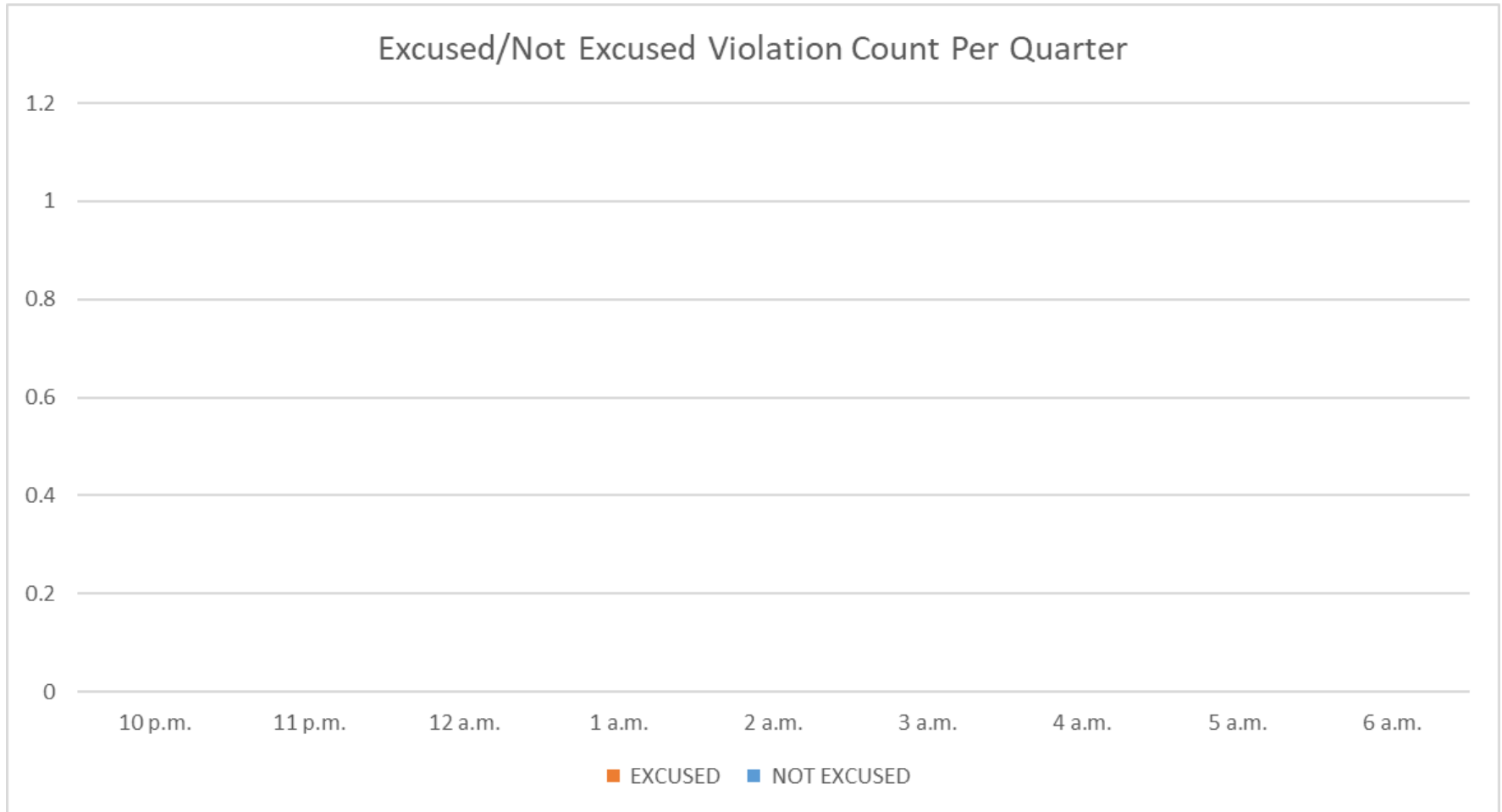
**100% Compliance
(0 total departures)
(0 non-compliant)**

2023Q3

**100% Compliance
(15 total departures)
(0 non-compliant)**

Arrivals
Departures
Touch and Go
Overflights

Quartely Runway 12 Night Departure Non-Compliant Count Per Quarter



Operation Details	
Beacon Code:	3374
AC Type:	B737
Operation Type:	Departure
Runway:	30
Date/Time:	1/7/2019 8:57:05 AM

© 2004 GDT, Inc. and its licensors, Rel. 07/2004
© MapBox © OpenStreetMap

Runway 30 Bay Farm Right Turn NAP

2024Q3
100% Compliance
(16,118 total departures)
(5 non-compliant)

2023Q3
100% Compliance
(16,393 total departures)
(2 non-compliant)

Heading: 299
Elevation: 36



Operation Details
Beacon Code: 3231
AC Type: B738
Operation Type: Departure
Runway: 30
Date/Time: 4/7/2024 8:05:16 PM



Runway 30 East Turn NAP

2024Q3
100% Compliance
(4,132 total departures)
(3 non-compliant)

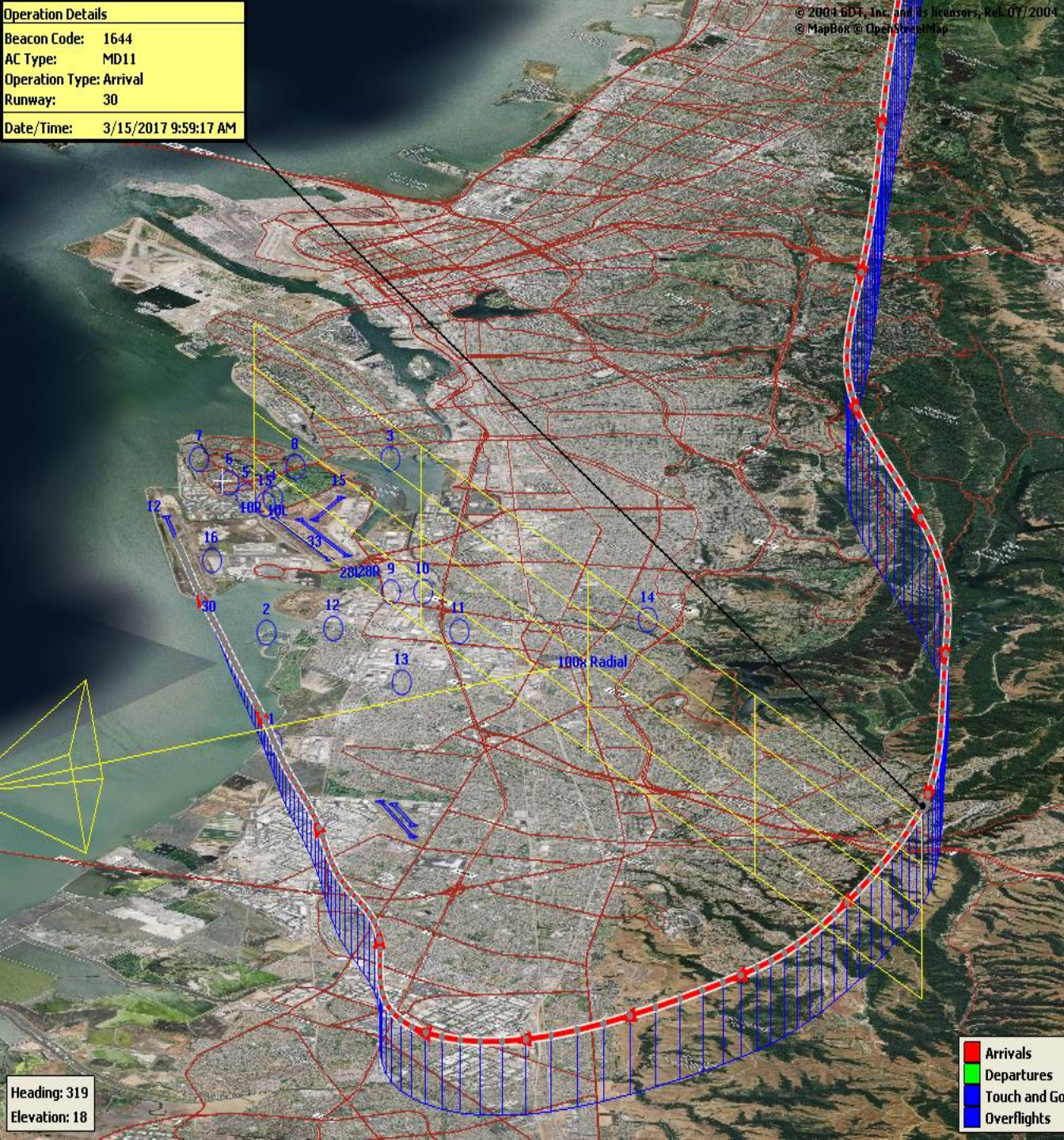
*Excused Departures = 8

2023Q3
100% Compliance
(4,169 total departures)
(3 non-compliant)

Heading 310°
Elevation 24°

Operation Details	
Beacon Code:	1644
AC Type:	MD11
Operation Type:	Arrival
Runway:	30
Date/Time:	3/15/2017 9:59:17 AM

© 2004 GDT, Inc. and its licensors, Rel. 07/2004
© MapBox © OpenStreetMap



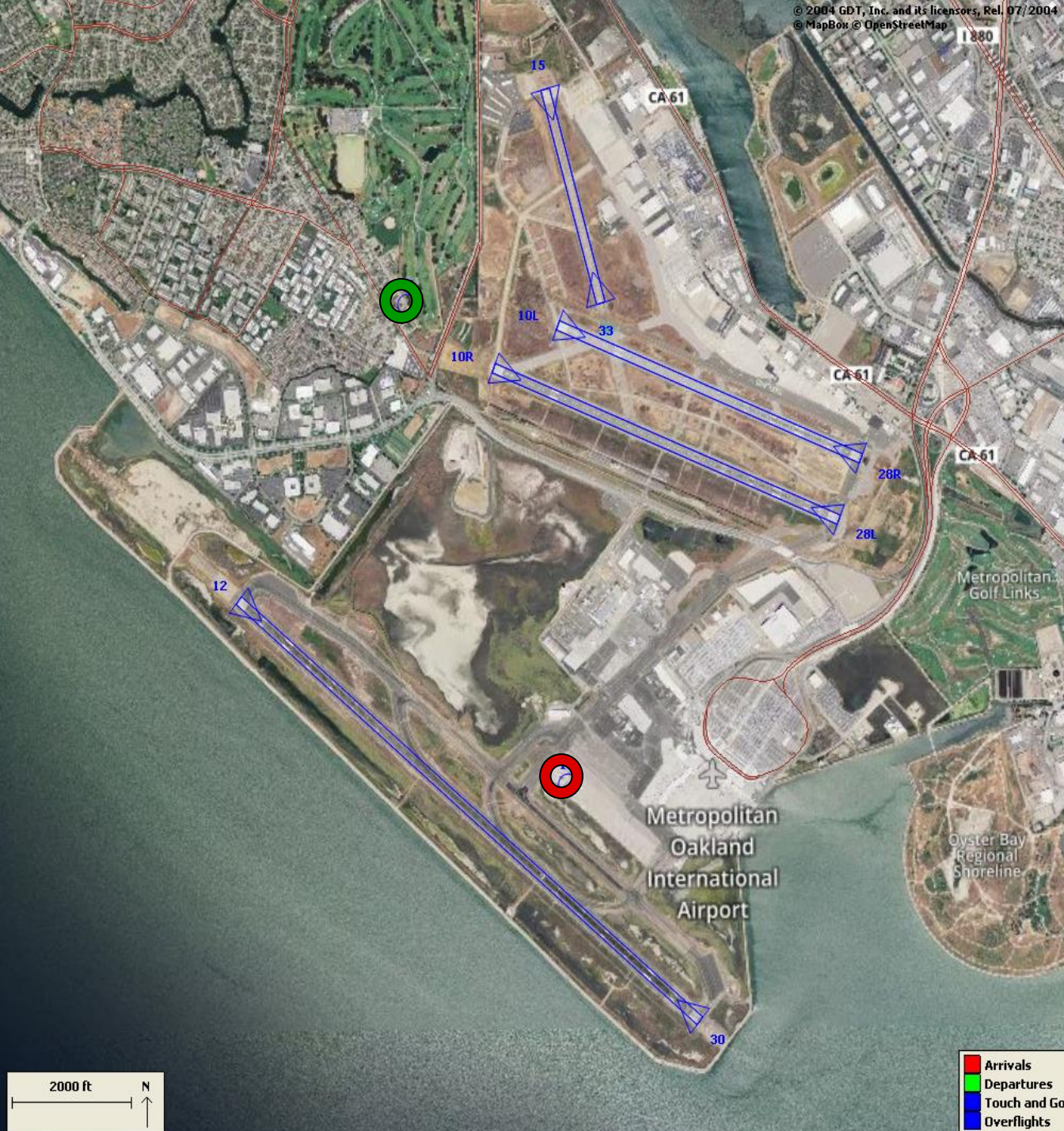
100 Degree Radial At 3,000 ft. NAP

2024Q3
99% Compliance
(797 total landings)
(8 non-compliant)

2023Q3
98% Compliance
(946 total landings)
(14 non-compliant)

Heading: 319
Elevation: 18

- Arrivals
- Departures
- Touch and Go
- Overflights



Engine Run-up NAP

2024Q3

**100% Compliance
(5 engine run-ups)*
(0 non-compliant)**

2023Q3

**82% Compliance
(13 engine run-ups)
(2 non-compliant)**

***Only above idle-power run-ups
recorded.**

Compliance Monitoring Quarterly Summary Comparison Third Quarter 2024 - Quarter-to-Quarter				
	2024Q2		2024Q3	
	Compl.	N/C	Compl.	N/C
Runway 28R/L Jet Departure Compliance	93%	7%	94%	6%
Total Airport-wide Corporate Jet Departures	2,474	180	1,930	127
Runway 10R/L Jet Landing Compliance	88%	12%	100%	0%
Total Southeast Plan Corporate Jet Landings	83	11	0	0
North Field VFR Departure Compliance	97%	3%	94%	6%
Total Runways 28R/L & 33 Departures	309	10	1,455	89
North Field Quiet Hours Compliance	90%	10%	92%	8%
Total North Field Quiet Hours Departures	233	27	314	27
Runway 30 BFI Right Turn Departure Compliance	100%	0%	100%	0%
Total Runway 30 Turbojet Departures	15,693	6	16,113	5
Night Time Departure Compliance	99%	1%	99%	1%
Total Runway 30 Night Turbojet Departures	3,266	35	3,206	28
Runway 12 Night Departure Compliance	98%	2%	100%	0%
Total Runway 12 Night Turbojet Departures	134	3	0	0
Runway 30 East Turn Departure Compliance	100%	0%	100%	0%
Total Runway 30 East Turn Departures	3,939	0	4,129	3
100 Degree Radial Turbojet Landing Compliance	99%	1%	99%	1%
Total 100 Degree Radial Turbojet Landings	835	5	789	8
Engine Runup Program Compliance	100%	0%	100%	0%
Total Evening and Nighttime Engine Runups	5	0	5	0
Note: N/C means non-compliant. Percentage values are rounded out.				

Table 1. North Field Night Aircraft Departure SEL Noise Measurements
Total Aircraft Departures = 341

Third Quarter 2024 (10:00 p.m. to 7:00 a.m.)

NMT Number	Aircraft Noise Events Below SEL 80 dBA	Aircraft Noise Events SEL 80 - 84.9 dBA			Aircraft Noise Events SEL 85 - 89.9 dBA			Aircraft Noise Events SEL ≥ 90 dBA			Total Aircraft Noise Events
		Amount	Nightly Average	As Percentage of Departures	Amount	Nightly Average	As Percentage of Departures	Amount	Nightly Average	As Percentage of Departures	
1	0	0	0.0	0.0%	0	0.0	0.0%	0	0.0	0.0%	0
2	0	0	0.0	0.0%	0	0.0	0.0%	0	0.0	0.0%	0
3	62	3	0.0	0.5%	2	0.0	0.4%	0	0.0	0.0%	67
4	161	57	0.6	10.1%	36	0.4	6.3%	59	0.7	10.4%	313
5	142	23	0.3	4.1%	8	0.1	1.4%	79	0.9	13.9%	252
6	98	12	0.1	2.1%	25	0.3	4.4%	57	0.6	10.1%	192
7	20	14	0.2	2.5%	47	0.5	8.3%	17	0.2	3.0%	98
8	77	25	0.3	4.4%	3	0.0	0.5%	0	0.0	0.0%	105
9	4	0	0.0	0.0%	1	0.0	0.2%	0	0.0	0.0%	5
10	47	5	0.1	0.9%	1	0.0	0.2%	2	0.0	0.4%	55
11	1	0	0.0	0.0%	0	0.0	0.0%	0	0.0	0.0%	1
12	0	0	0.0	0.0%	0	0.0	0.0%	0	0.0	0.0%	0
13	0	0	0.0	0.0%	0	0.0	0.0%	0	0.0	0.0%	0
14	56	1	0.0	0.2%	0	0.0	0.0%	0	0.0	0.0%	57
All NMTs	668	140	2	0	123	1	0	214	2	0	1145

Table 2. Aircraft SEL Noise Measurements in Alameda - Total Aircraft Departures = 337


Third Quarter 2024 (10:00 p.m. to 7:00 a.m.)

NMT Number	Aircraft Noise Events Below SEL 80 dBA	Aircraft Noise Events SEL 80 - 84.9 dBA			Aircraft Noise Events SEL 85 - 89.9 dBA			Aircraft Noise Events SEL ≥ 90 dBA			Total Aircraft Noise Events
		Amount	Nightly Average	As Percentage of Departures	Amount	Nightly Average	As Percentage of Departures	Amount	Nightly Average	As Percentage of Departures	
3	62	3	0.0	1.3%	2	0.0	0.8%	0	0.0	0.0%	67
4	161	57	0.6	23.8%	36	0.4	15.1%	59	0.7	24.7%	313
5	142	23	0.3	9.6%	8	0.1	3.3%	79	0.9	33.1%	252
6	98	12	0.1	5.0%	25	0.3	10.5%	57	0.6	23.8%	192
7	20	14	0.2	5.9%	47	0.5	19.7%	17	0.2	7.1%	98
8	77	25	0.3	10.5%	3	0.0	1.3%	0	0.0	0.0%	105
Total	560	134	1.5		121	1.3		212	2.4		1,027


Table 3. Aircraft SEL Noise Measurements in San Leandro - Total Aircraft Departures = 4

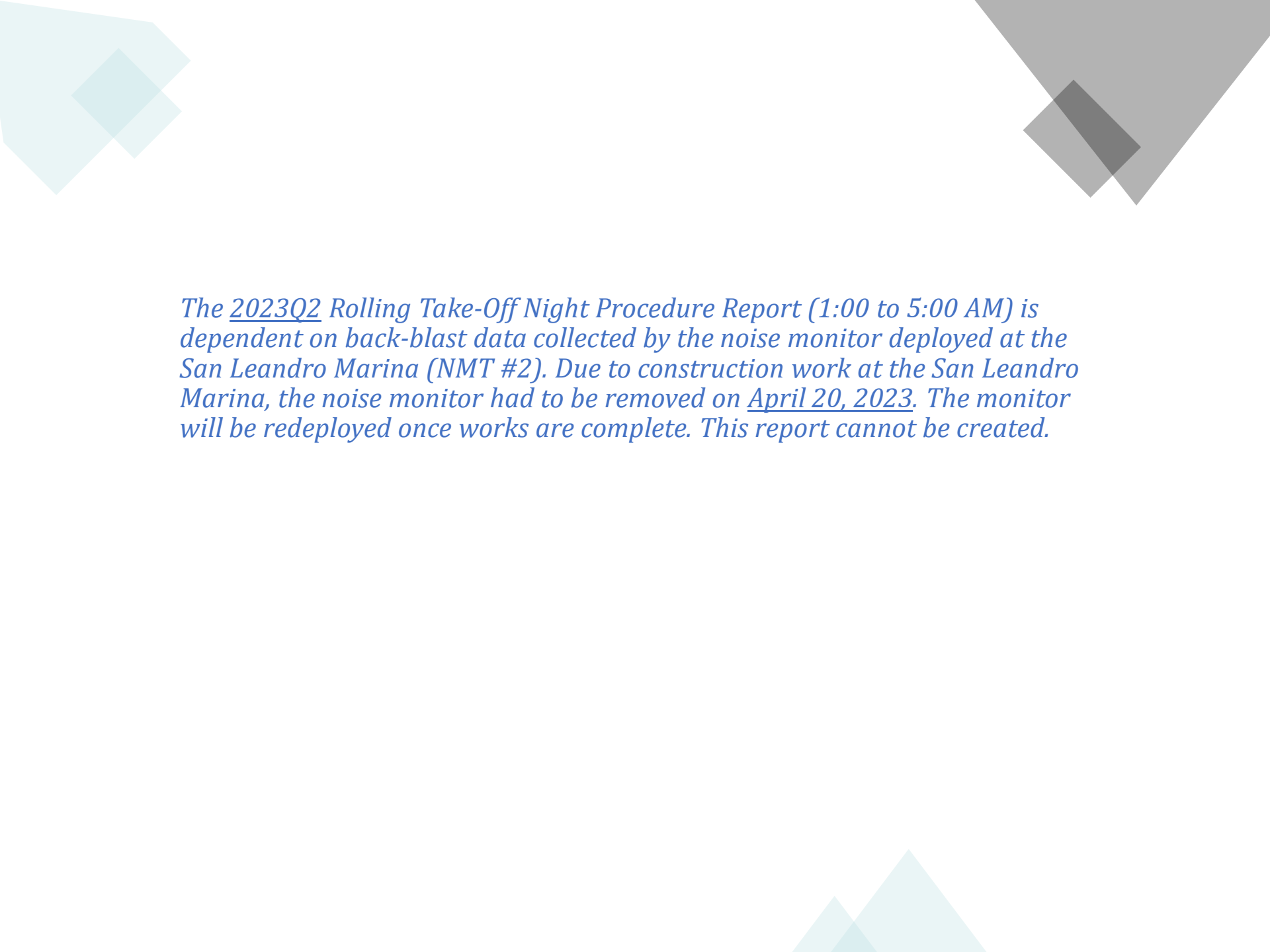
Third Quarter 2024 (10:00 p.m. to 7:00 a.m.)

NMT Number	Aircraft Noise Events Below SEL 80 dBA	Aircraft Noise Events SEL 80 - 84.9 dBA			Aircraft Noise Events SEL 85 - 89.9 dBA			Aircraft Noise Events SEL ≥ 90 dBA			Total Aircraft Noise Events
		Amount	Nightly Average	As Percentage of Departures	Amount	Nightly Average	As Percentage of Departures	Amount	Nightly Average	As Percentage of Departures	
2	0	0	0.0	0.0%	0	0.0	0.0%	0	0.0	0.0%	0
9	4	0	0.0	0.0%	1	0.0	0.3%	0	0.0	0.0%	5
10	47	5	0.1	1.5%	1	0.0	0.3%	2	0.0	0.6%	55
11	1	0	0.0	0.0%	0	0.0	0.0%	0	0.0	0.0%	1
12	0	0	0.0	0.0%	0	0.0	0.0%	0	0.0	0.0%	0
13	0	0	0.0	0.0%	0	0.0	0.0%	0	0.0	0.0%	0
14	56	1	0.0	0.3%	0	0.0	0.0%	0	0.0	0.0%	57
Total	108	6	0.1		2	0.0		2	0.0		118



The 2024Q2 Rolling Take-Off Night Procedure Report (1:00 to 5:00 AM) is dependent on back-blast data collected by the noise monitor deployed at the San Leandro Marina (NMT #2). Due to construction work at the San Leandro Marina, the noise monitor had to be removed on April 20, 2023. The monitor will be redeployed once works are complete. This report cannot be created.





The 2023Q2 Rolling Take-Off Night Procedure Report (1:00 to 5:00 AM) is dependent on back-blast data collected by the noise monitor deployed at the San Leandro Marina (NMT #2). Due to construction work at the San Leandro Marina, the noise monitor had to be removed on April 20, 2023. The monitor will be redeployed once works are complete. This report cannot be created.

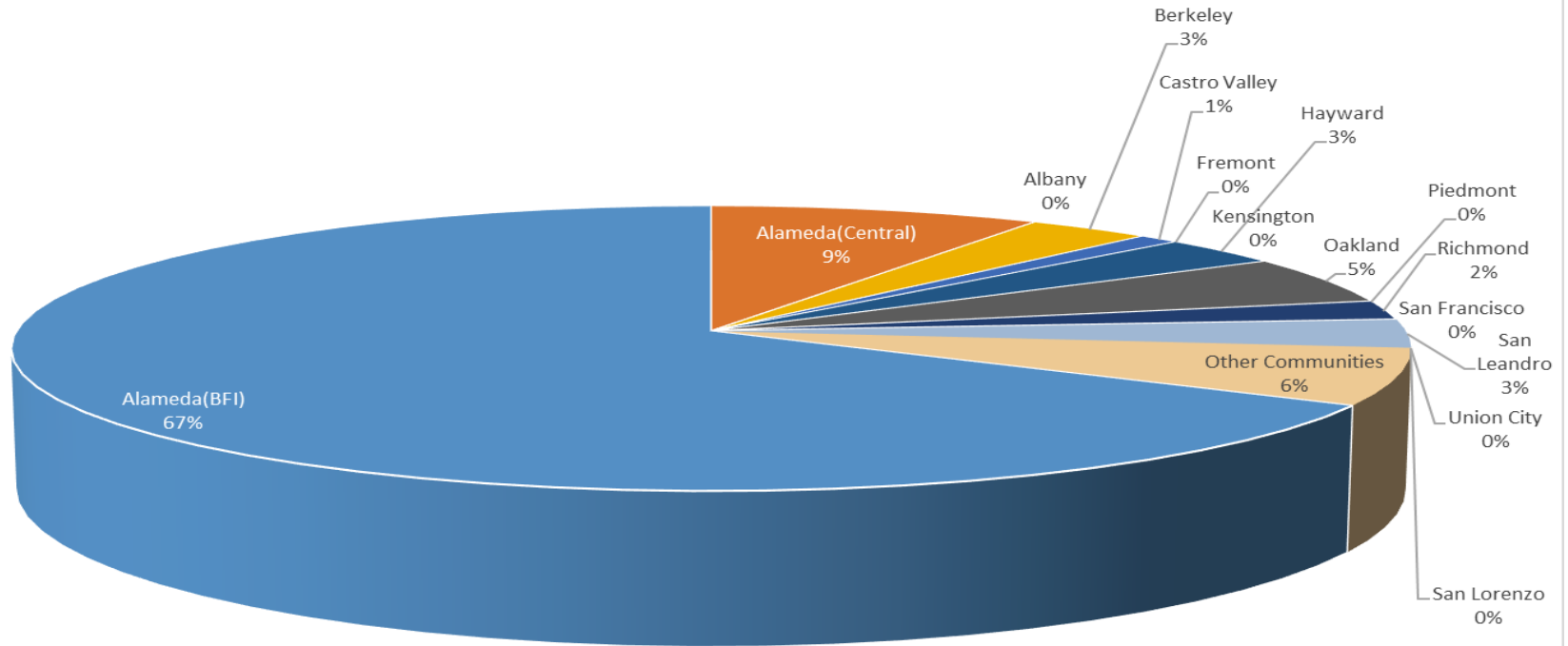
San Francisco Bay Oakland International Airport
Noise Complaint Summary
July 2024

Community	Callers	Complaints
Alameda(BFI)	62	1352
Alameda(Central)	8	83
Albany	0	0
Berkeley	3	173
Castro Valley	1	48
Fremont	0	0
Hayw ard	3	7
Kensington	0	0
Oakland	5	1971
Piedmont	0	0
Richmond	2	241
San Francisco	0	0
San Leandro	3	3
Union City	0	0
San Lorenzo	0	0
Other Communities	6	53
Total	93	3931
Complaints by Type		
E-mail	2124	
View point App	1807	
Complaints by Time of Day		
Day (0700 - 1900)	757	
Evening (1900 - 2200)	184	
Night (2200 - 0700)	2990	
Complaints by Type of Operation		
Arrivals	1621	
Departures	2124	
Over-flights	98	
Touch & Go	88	
Not Linked to an Operation	0	
Complaints by Type of Aircraft		
Business Jet	221	
Helicopter	58	
Jet	3118	
Military	0	
Not Reported (not linked to an aircraft)	0	
Other (Type information not available)	8	
Propeller	468	
Turbo-prop	58	

Number of Callers

July 2024

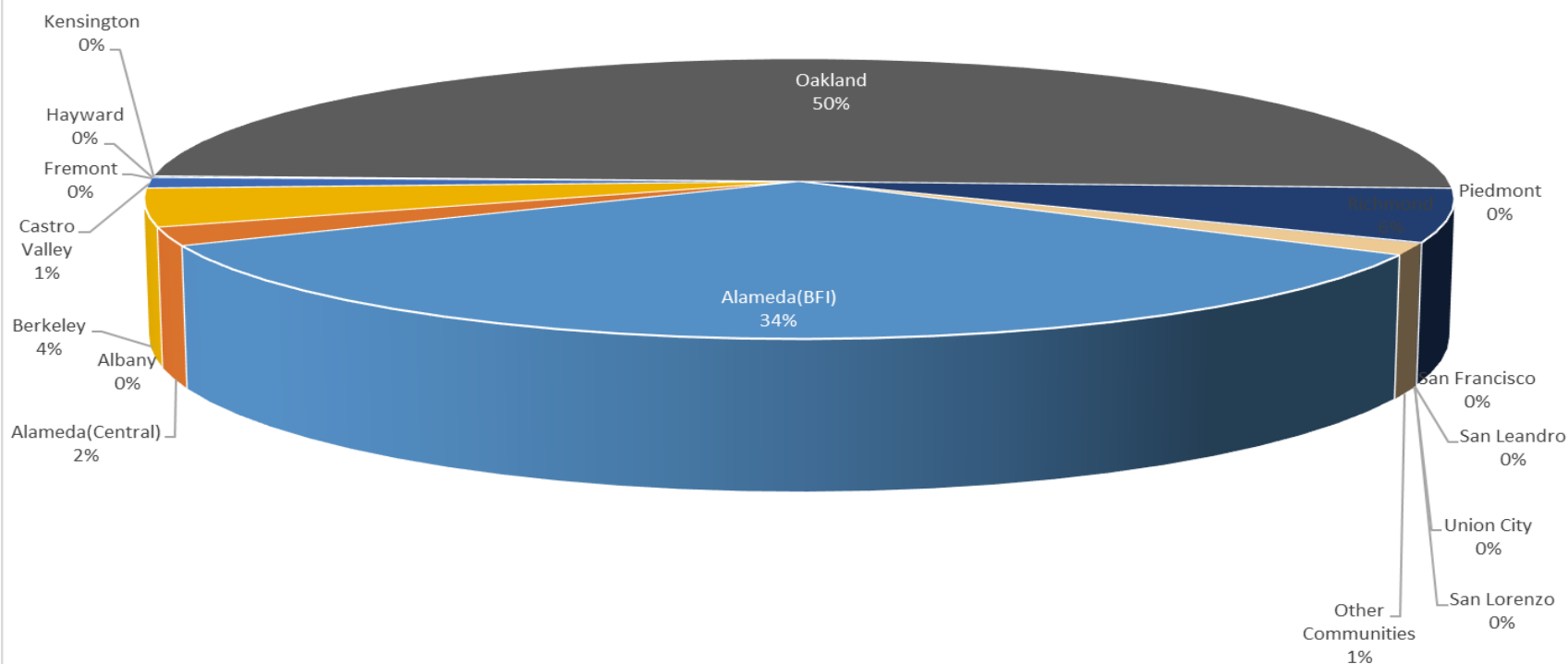
Noise Complaints Summary by Number of Callers



Number of Complaints

July 2024

Noise Complaints Summary by Number of Complaints



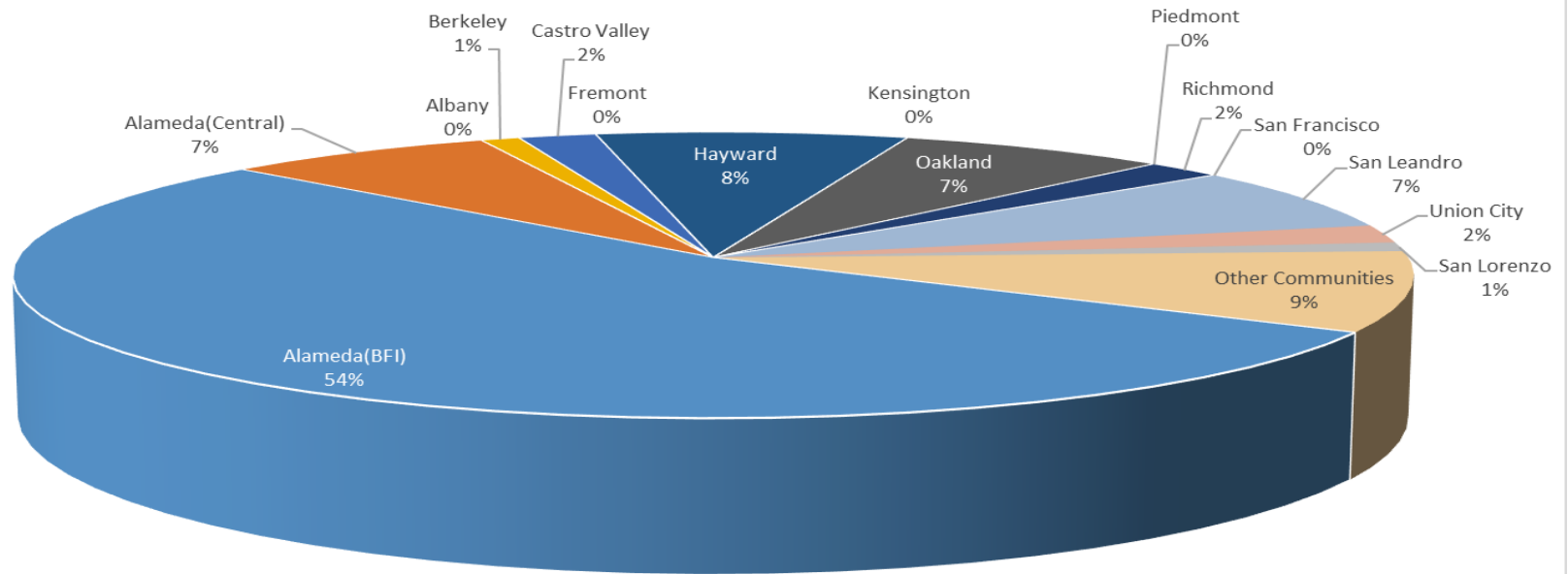
**San Francisco Bay Oakland International Airport
Noise Complaint Summary
August 2024**

Community	Callers	Complaints
Alameda(BFI)	53	673
Alameda(Central)	7	73
Albany	0	0
Berkeley	1	56
Castro Valley	2	24
Fremont	0	0
Hayw ard	8	14
Kensington	0	0
Oakland	7	1418
Piedmont	0	0
Richmond	2	209
San Francisco	0	0
San Leandro	7	9
Union City	2	22
San Lorenzo	1	1
Other Communities	9	45
Total	99	2544
Complaints by Type		
E-mail	1486	
View point App	1058	
Complaints by Time of Day		
Day (0700 - 1900)	627	
Evening (1900 - 2200)	266	
Night (2200 - 0700)	1651	
Complaints by Type of Operation		
Arrivals	1283	
Departures	1131	
Over-flights	30	
Touch & Go	100	
Not Linked to an Operation	0	
Complaints by Type of Aircraft		
Business Jet	146	
Helicopter	49	
Jet	2106	
Military	0	
Not Reported (not linked to an aircraft)	1	
Other (Type information not available)	5	
Propeller	208	
Turbo-prop	29	

Number of Callers

August 2024

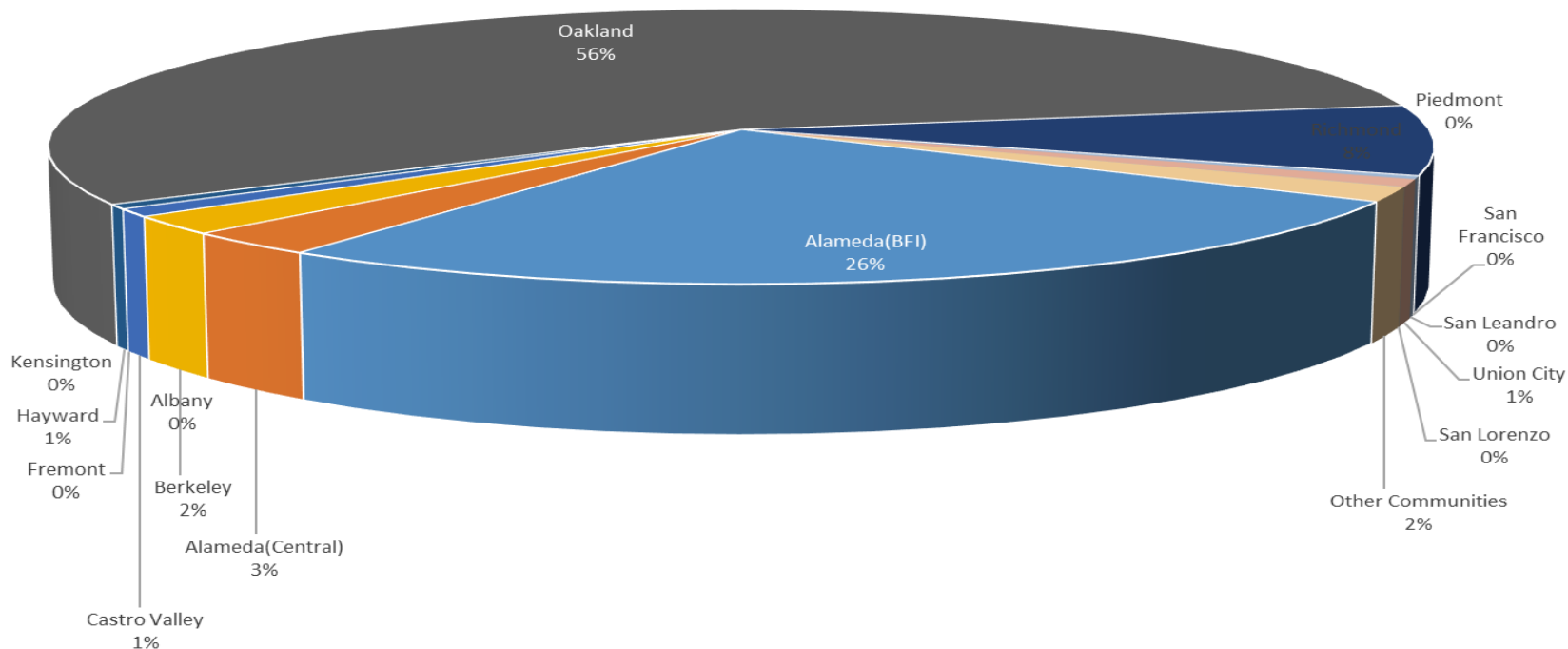
Noise Complaints Summary by Number of Callers



Number of Complaints

August 2024

Noise Complaints Summary by Number of Complaints



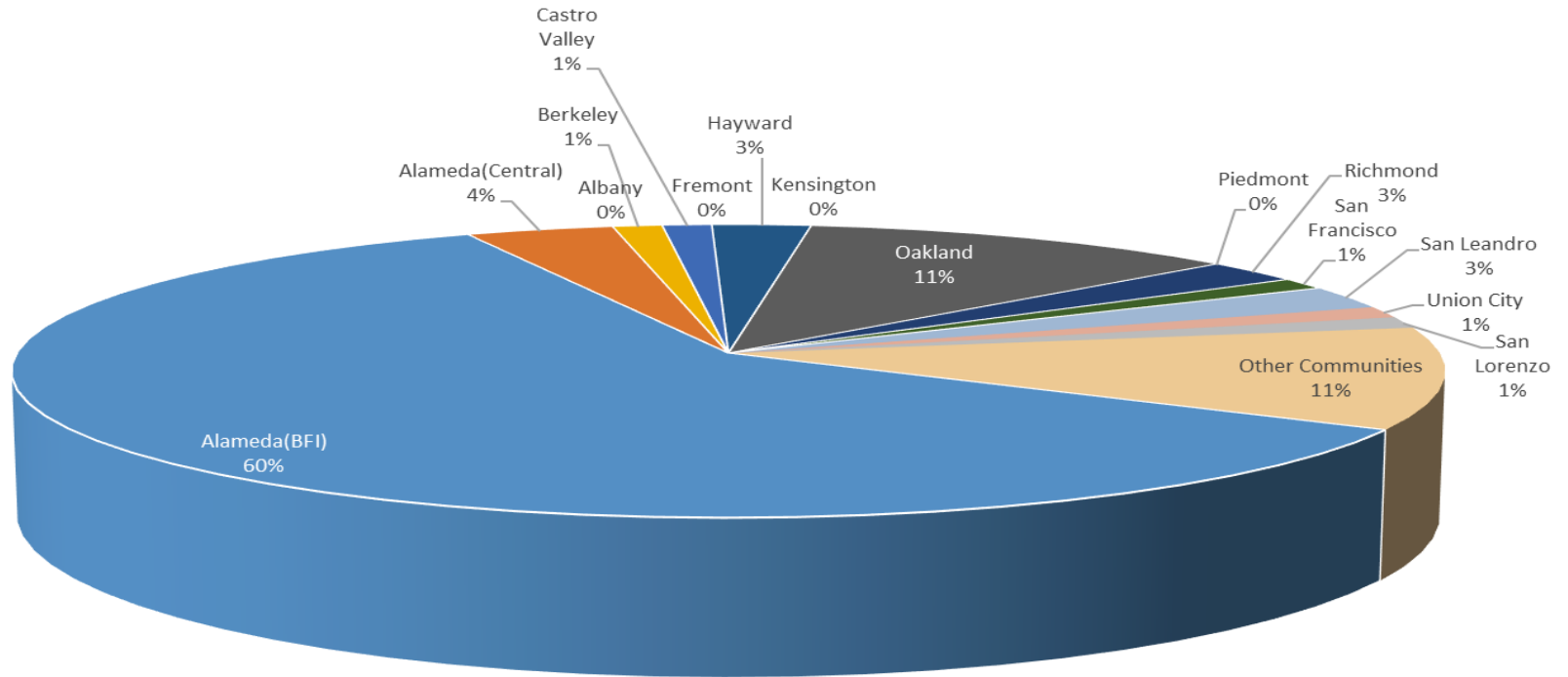
**San Francisco Bay Oakland International Airport
Noise Complaint Summary
September 2024**

Community	Callers	Complaints
Alameda(BFI)	48	931
Alameda(Central)	3	21
Albany	0	0
Berkeley	1	120
Castro Valley	1	53
Fremont	0	0
Hayward	2	7
Kensington	0	0
Oakland	9	3802
Piedmont	0	0
Richmond	2	265
San Francisco	1	1
San Leandro	2	5
Union City	1	53
San Lorenzo	1	1
Other Communities	9	30
Total	80	5289
Complaints by Type		
E-mail		3914
View point App		1362
Complaints by Time of Day		
Day (0700 - 1900)		913
Evening (1900 - 2200)		2174
Night (2200 - 0700)		2202
Complaints by Type of Operation		
Arrivals		2490
Departures		2708
Over-flights		38
Touch & Go		53
Not Linked to an Operation		0
Complaints by Type of Aircraft		
Business Jet		228
Helicopter		31
Jet		4753
Military		0
Not Reported (not linked to an aircraft)		0
Other (Type information not available)		9
Propeller		238
Turbo-prop		30

Number of Callers

September 2024

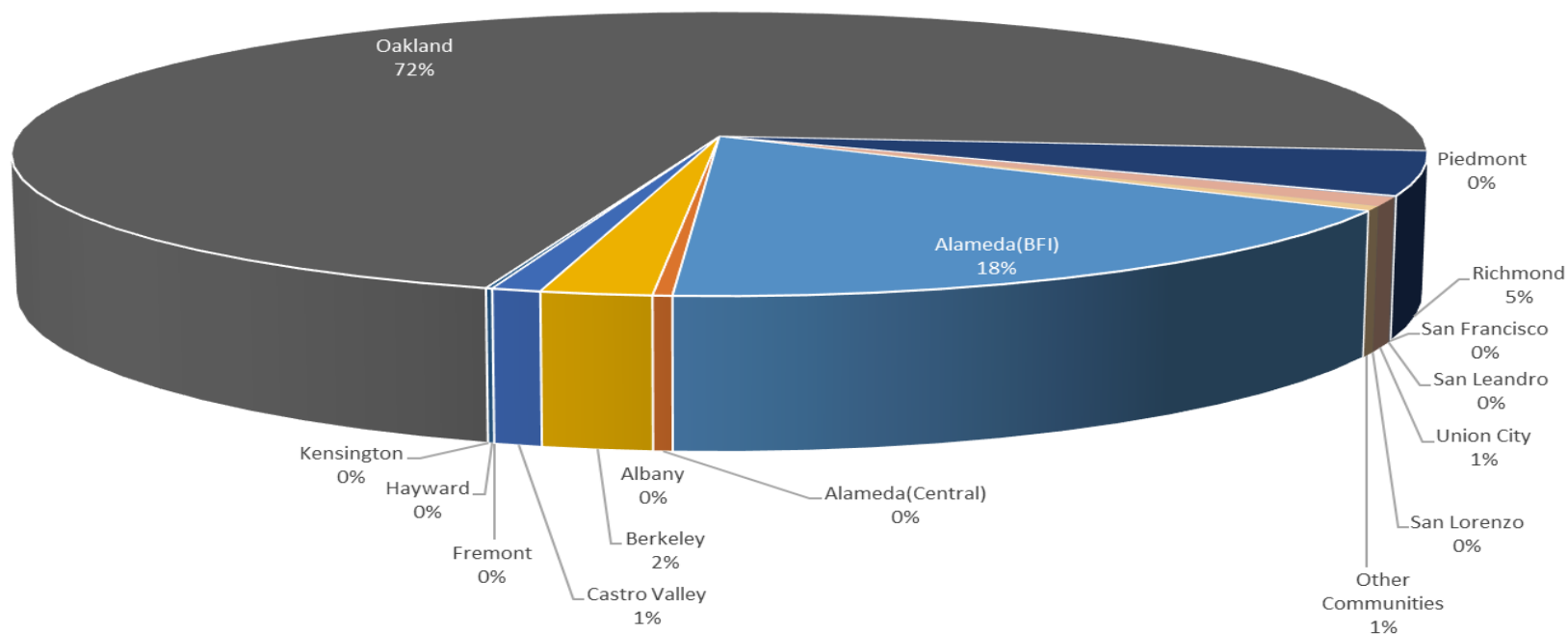
Noise Complaints Summary by Number of Callers

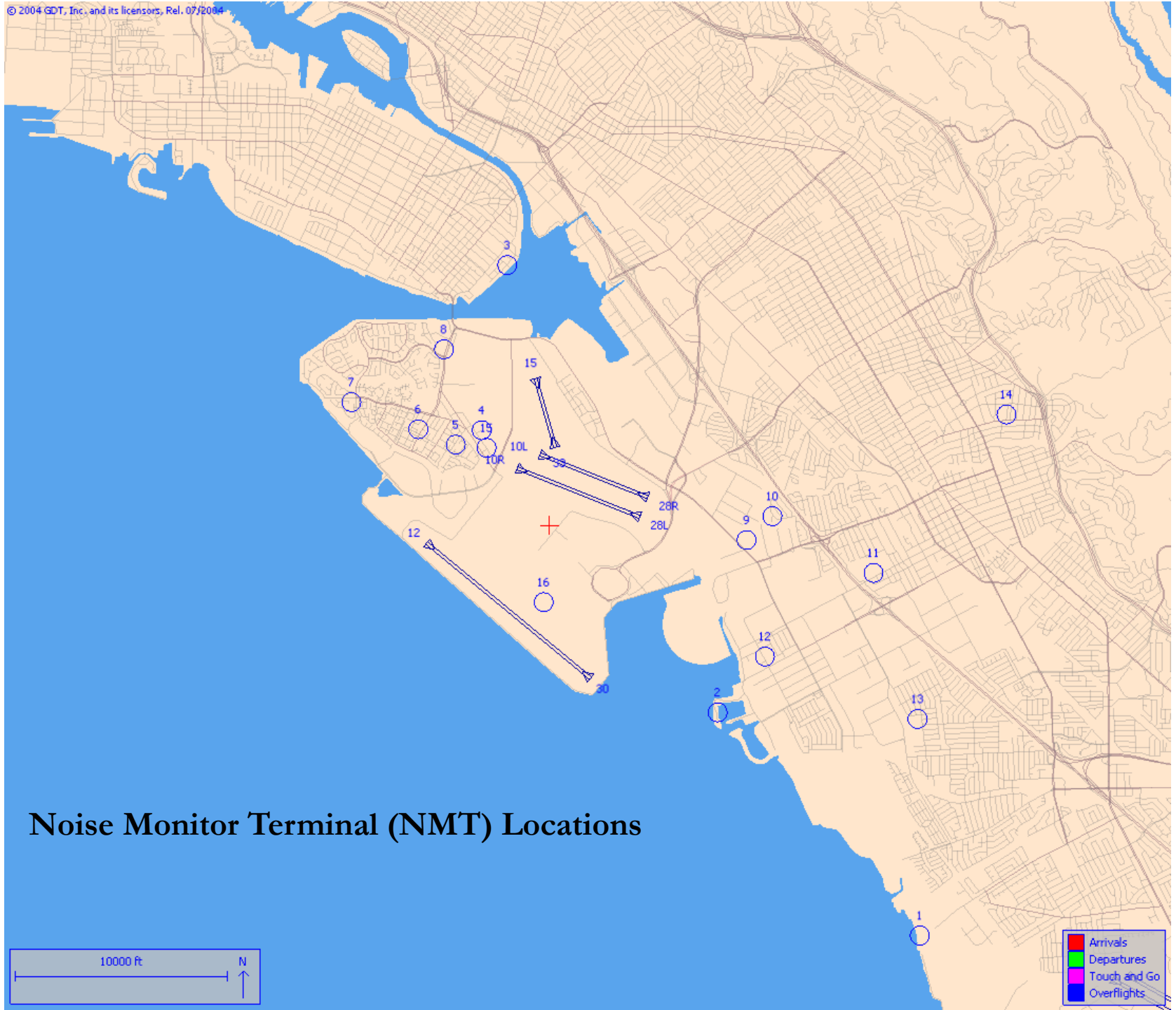


Number of Complaints

September 2024

Noise Complaints Summary by Number of Complaints





Noise Monitor Terminal (NMT) Locations