

NOISE FORUM SUMMARY

North/South Field Working Groups



NOISE ABATEMENT REPORT

FOURTH QUARTER 2024

Disclaimer

The Port of Oakland's Airport Noise and Operations Monitoring System (ANOMS) is the source of the data used in this report. Although ANOMS is a very sophisticated computer program that provides a state-of-the-art solution for collecting aircraft noise complaints. The number of aircraft noise complaints in the report are for informational purposes. Airport staff carefully reviews the data for accuracy and will make corrections whenever possible.

+
•
0

Compliance Monitoring Quarterly Summary Comparison Fourth Quarter 2024				
	2023Q4		2024Q4	
	Compl.	N/C	Compl.	N/C
Runway 28R/L Jet Departure Compliance	93%	7%	93%	7%
Total Airport-wide Corporate Jet Departures	2,111	154	2,306	165
Runway 10R/L Jet Landing Compliance	83%	17%	88%	12%
Total Southeast Plan Corporate Jet Landings	163	33	204	29
North Field VFR Departure Compliance	92%	8%	96%	4%
Total Runways 28R/L & 33 Departures	228	19	1,197	45
North Field Quiet Hours Compliance	82%	18%	86%	14%
Total North Field Quiet Hours Departures	206	46	226	36
Runway 30 BFI Right Turn Departure Compliance	100%	0%	100%	0%
Total Runway 30 Turbojet Departures	15,637	2	14,696	9
Night Time Departure Compliance	99%	1%	99%	1%
Total Runway 30 Night Turbojet Departures	3,260	30	2,791	34
Runway 12 Night Departure Compliance	60%	40%	98%	2%
Total Runway 12 Night Turbojet Departures	32	21	131	2
Runway 30 East Turn Departure Compliance	100%	0%	100%	0%
Total Runway 30 East Turn Departures	3,943	3	3,434	0
100 Degree Radial Turbojet Landing Compliance	98%	2%	99%	1%
Total 100 Degree Radial Turbojet Landings	1,005	19	682	7
Engine Runup Program Compliance	100%	0%	100%	0%
Total Evening and Nighttime Engine Runups	14	0	10	0

Operation Details
Beacon Code: 3373
AC Type: H25C
Operation Type: Departure
Runway: 28L
Date/Time: 12/13/2016 8:26:14 AM

© 2004 GDT, Inc. and its licensors, Rel. 07/2004
© MapBox © OpenStreetMap

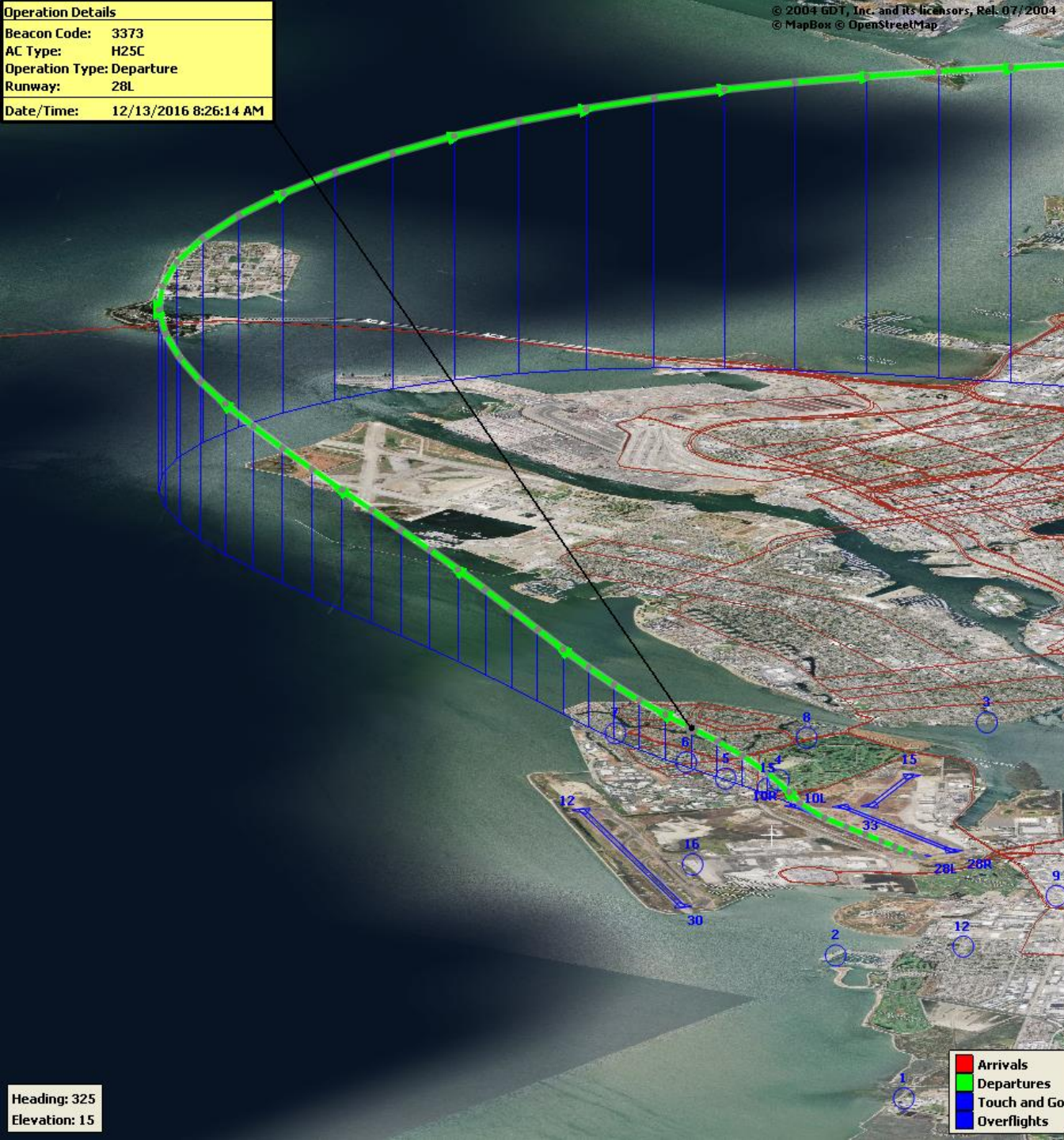
Runway 28R/L Jet Departure NAP

2024Q4
93% Compliance
(2,471 total departures)
(165 non-compliant)

2023Q4
93% Compliance
(2,265 total departures)
(154 non-compliant)

Heading: 325
Elevation: 15

Arrivals
Departures
Touch and Go
Overflights

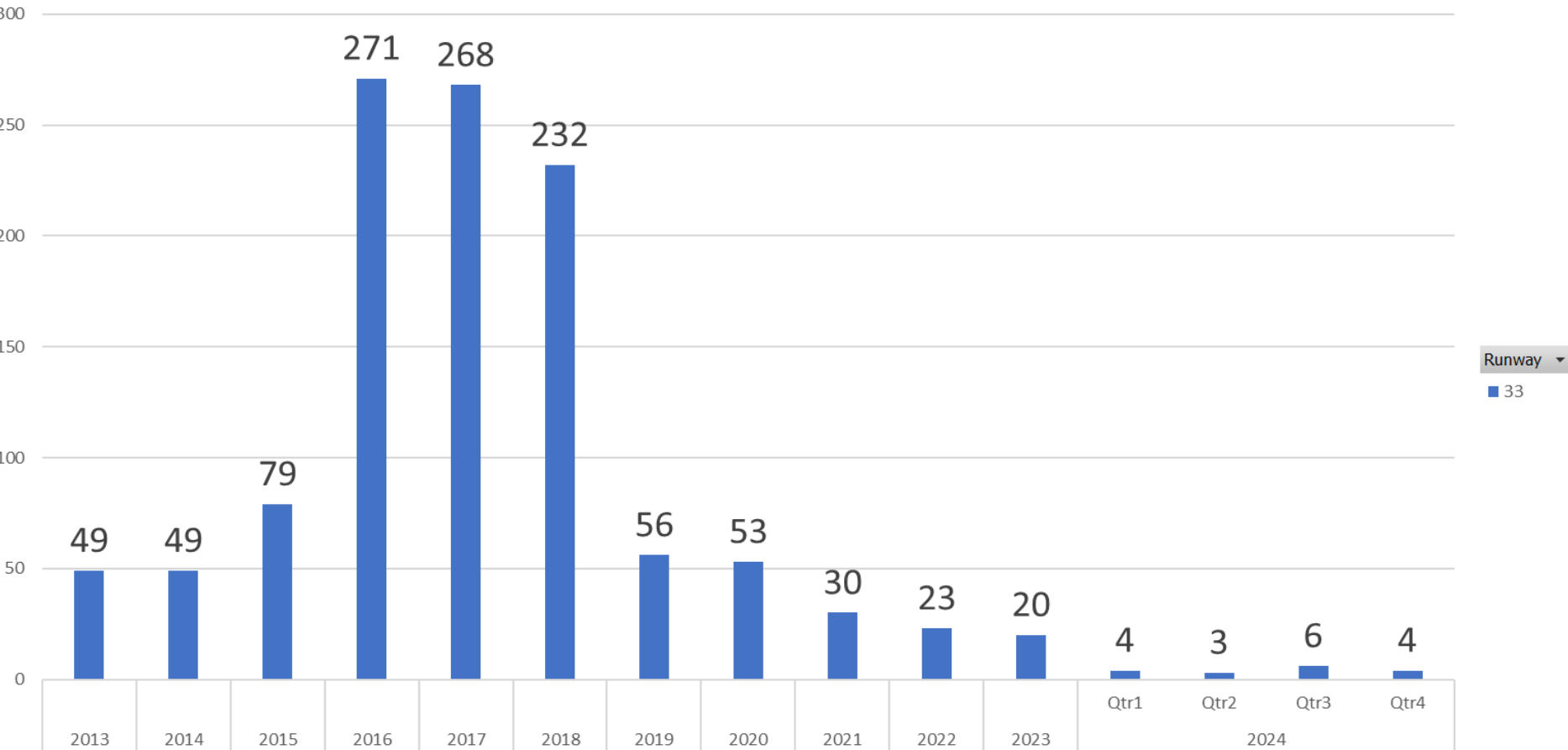


RUNWAY 33 JET DEPARTURES

FOURTH Quarter 2024

Count of Aircraft Type

Runway 33 Jet Departure Trend Analysis



Years Quarters Date Time

+ -

Operation Details
Beacon Code: 4564
AC Type: C550
Operation Type: Arrival
Runway: 10R
Date/Time: 12/15/2016 8:15:42 PM

© 2004 CDL, Inc. and its licensors, Rel. 07/2004
© MapBox © OpenStreetMap

Runway 10R/L Jet Landing NAP

2024Q4

88% Compliance
(233 total landings)
(29 non-compliant)

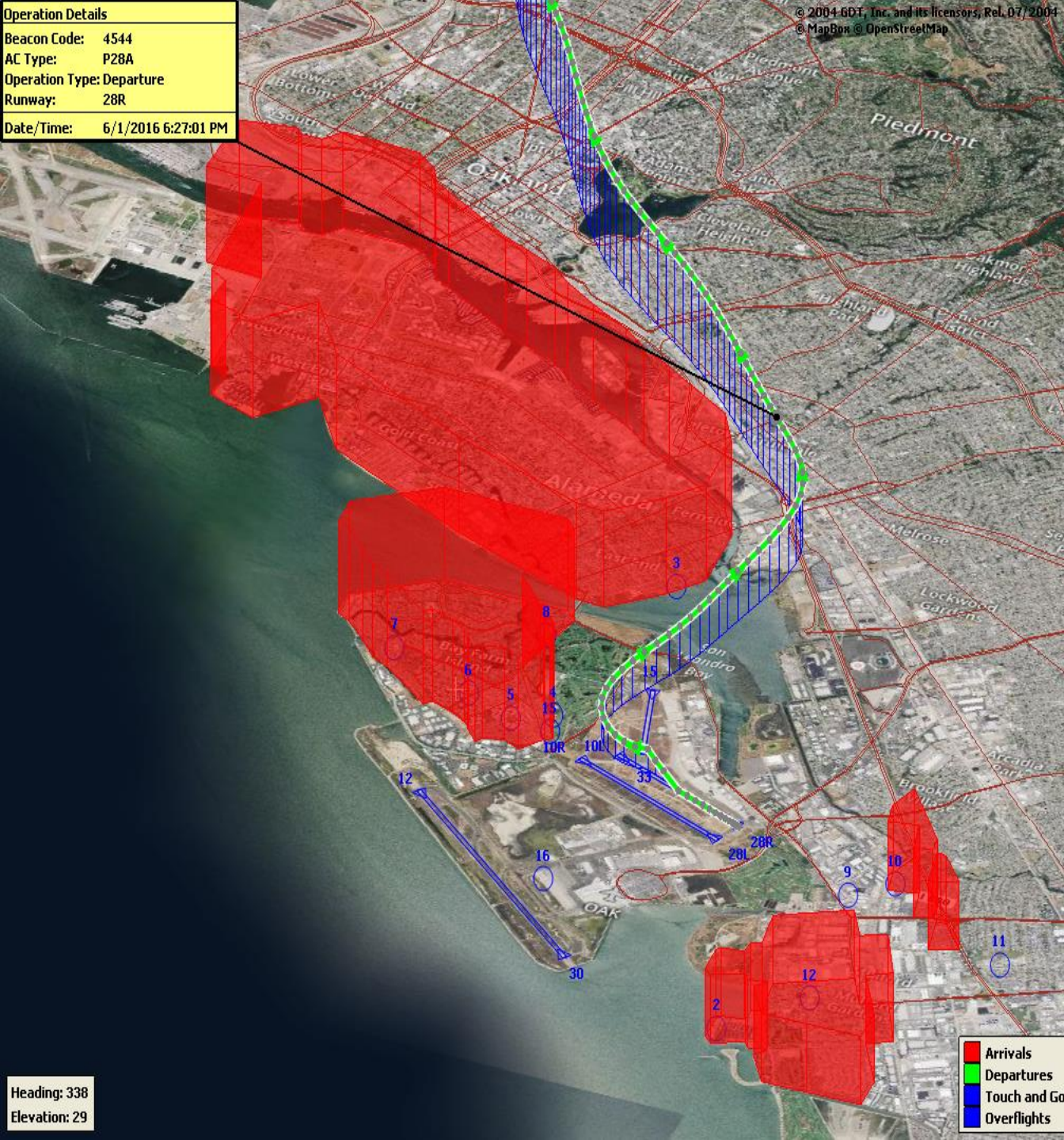
2023Q4

83% Compliance
(196 total landings)
(33 non-compliant)

Heading: 325
Elevation: 15

Arrivals
Departures
Touch and Go
Overflights

Operation Details	
Beacon Code:	4544
AC Type:	P28A
Operation Type:	Departure
Runway:	28R
Date/Time:	6/1/2016 6:27:01 PM



VFR Aircraft Departure NAP

2024Q4
96% Compliance
(1,242 total departures)
(45 non-compliant)

2023Q4
92% Compliance
(247 total departures)
(19 non-compliant)

Heading: 338
Elevation: 29

- Arrivals
- Departures
- Touch and Go
- Overflights

Operation Details
Beacon Code: 3351
AC Type: PC12
Operation Type: Departure
Runway: 28R
Date/Time: 12/13/2016 6:02:33 AM

© 2004 GDT, Inc. and its licensors, Rel. 07/2004
© MapBox © OpenStreetMap

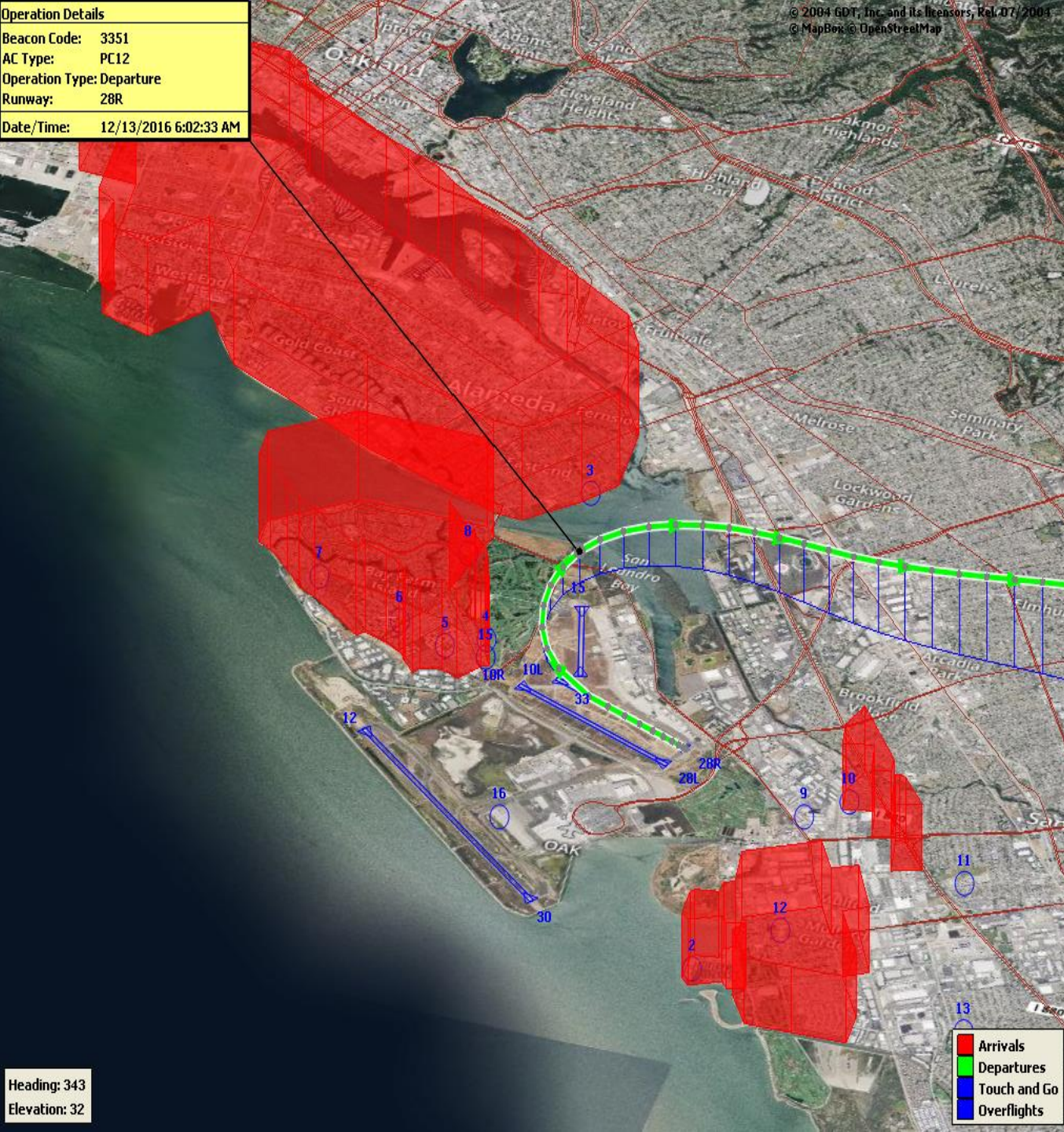
North Field Quiet Hours NAP

2024Q4
86% Compliance
(262 total departures)
(36 non-compliant)

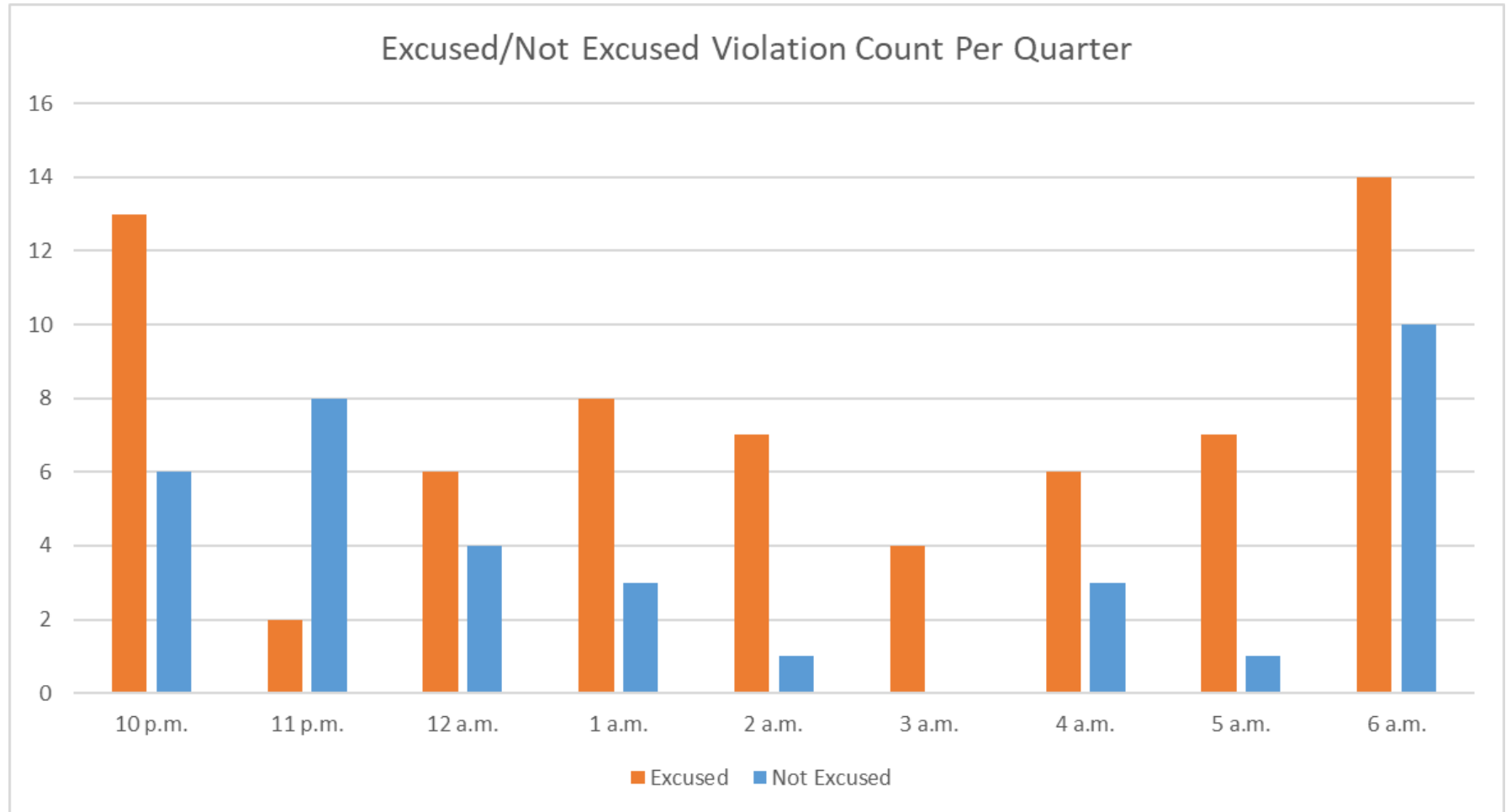
2023Q4
82% Compliance
(252 total departures)
(46 non-compliant)

Heading: 343
Elevation: 32

Arrivals
Departures
Touch and Go
Overflights



Quarterly North Field Quiet Hours NAP Non-Compliant Per Quarter



Operation Details
 Beacon Code: 3641
 AC Type: B737
 Operation Type: Departure
 Runway: 30
 Date/Time: 8/22/2017 10:16:59 PM



Night Time Departure NAP

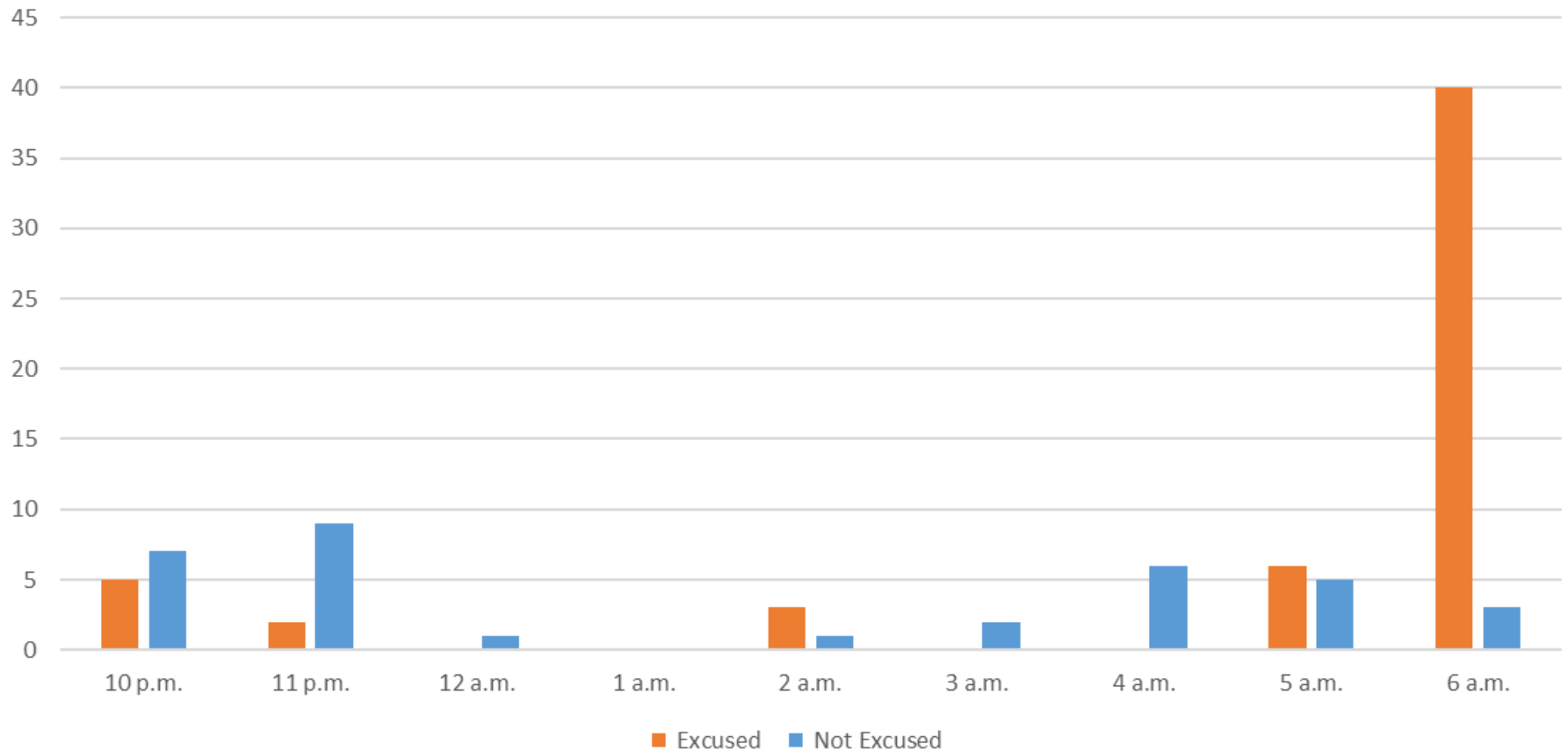
2024Q4
99% Compliance
(2,825 total departures)
(34 non-compliant)

*REBAS Gate non-compliant = 34

2023Q4
99% Compliance
(3,290 total departures)
(30 non-compliant)

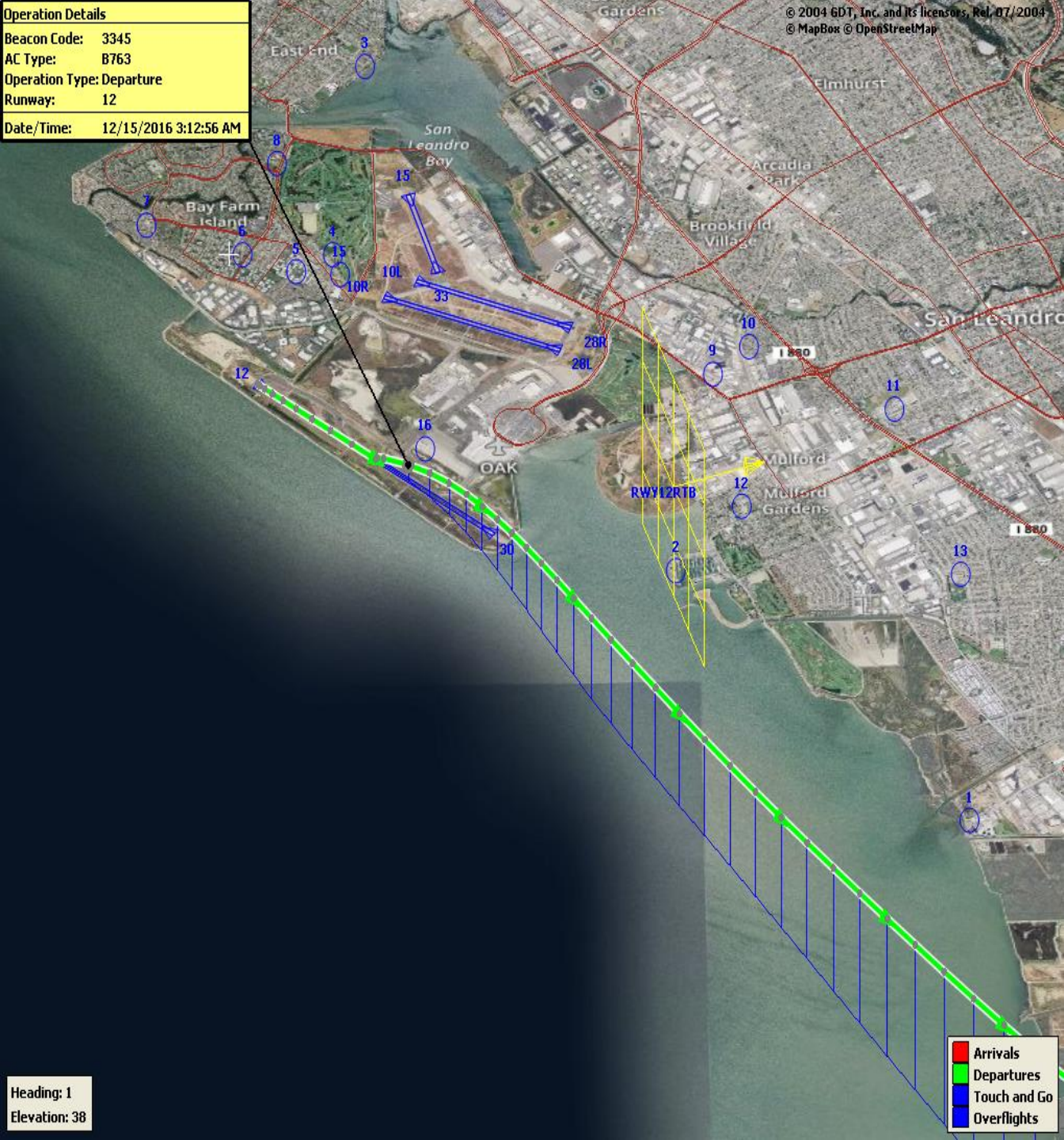
Quarterly Night Time NAP Non-Compliant Count Per Quarter

Excused/Not Excused Violation Count Per Quarter



Operation Details
Beacon Code: 3345
AC Type: B763
Operation Type: Departure
Runway: 12
Date/Time: 12/15/2016 3:12:56 AM

Heading: 1
Elevation: 38



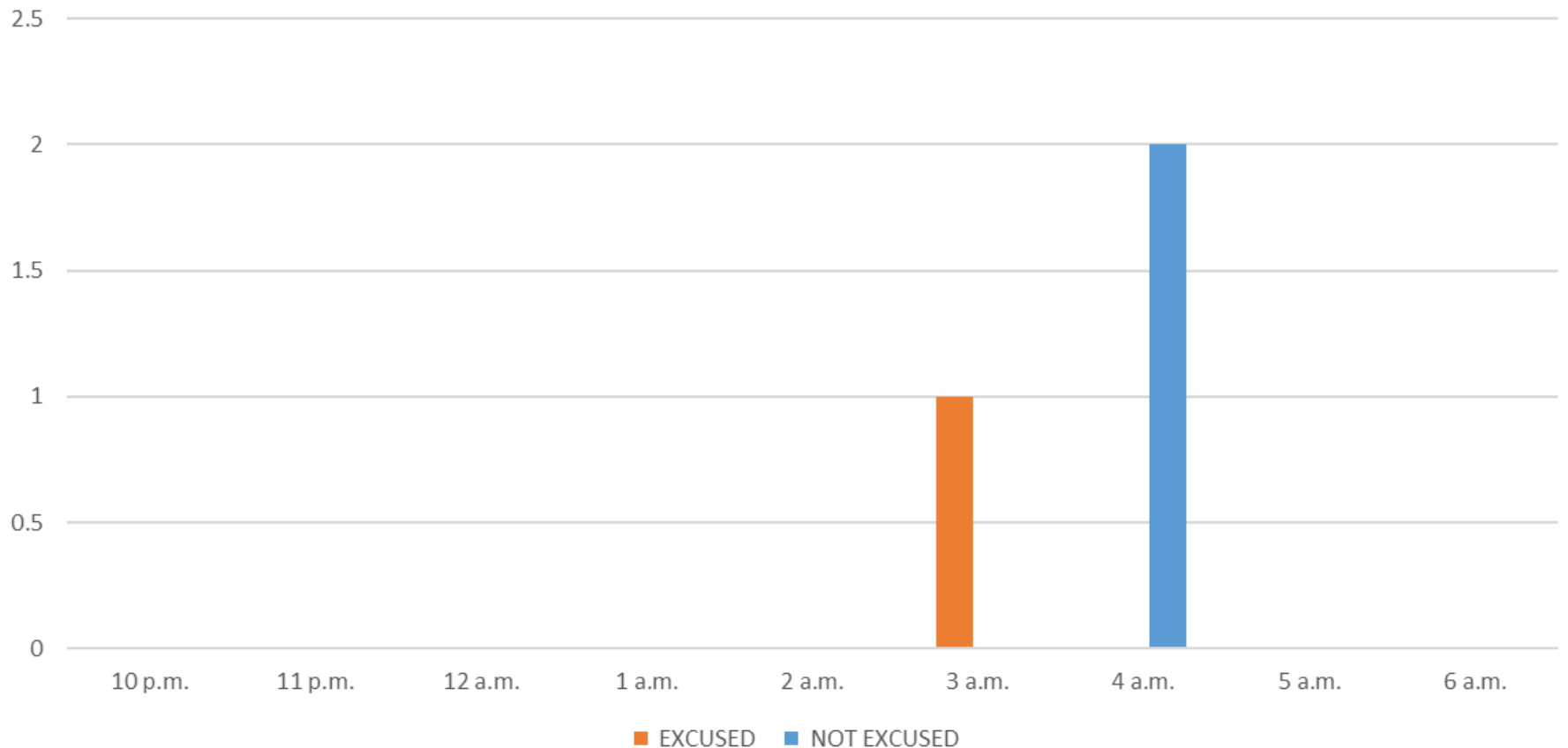
Runway 12 Night Departure NAP

2024Q4
98% Compliance
(133 total departures)
(2 non-compliant)

2023Q4
60% Compliance
(53 total departures)
(21 non-compliant)

Quartely Runway 12 Night Departure Non-Compliant Count Per Quarter

Excused/Not Excused Violation Count Per Quarter



Operation Details	
Beacon Code:	3374
AC Type:	B737
Operation Type:	Departure
Runway:	30
Date/Time:	1/7/2019 8:57:05 AM

© 2004 GDT, Inc. and its licensors, Rel. 07/2004
© MapBox © OpenStreetMap

Runway 30 Bay Farm Right Turn NAP

2024Q4
100% Compliance
(14,705 total departures)
(9 non-compliant)

2023Q4
100% Compliance
(15,639 total departures)
(2 non-compliant)

Heading: 299
Elevation: 36



Arrivals
Departures
Touch and Go
Overflights

Operation Details	
Beacon Code:	3231
AC Type:	B738
Operation Type:	Departure
Runway:	30
Date/Time:	4/7/2024 8:05:16 PM

Heading 310°
Elevation 24°

Runway 30 East Turn NAP

2024Q4
100% Compliance
(3,434 total departures)
(0 non-compliant)

***Excused Departures = 25**

2023Q4
100% Compliance
(3,946 total departures)
(3 non-compliant)

Operation Mode

- Arrivals
- Departures
- Overflights
- Ground Operation
- Touch and Go

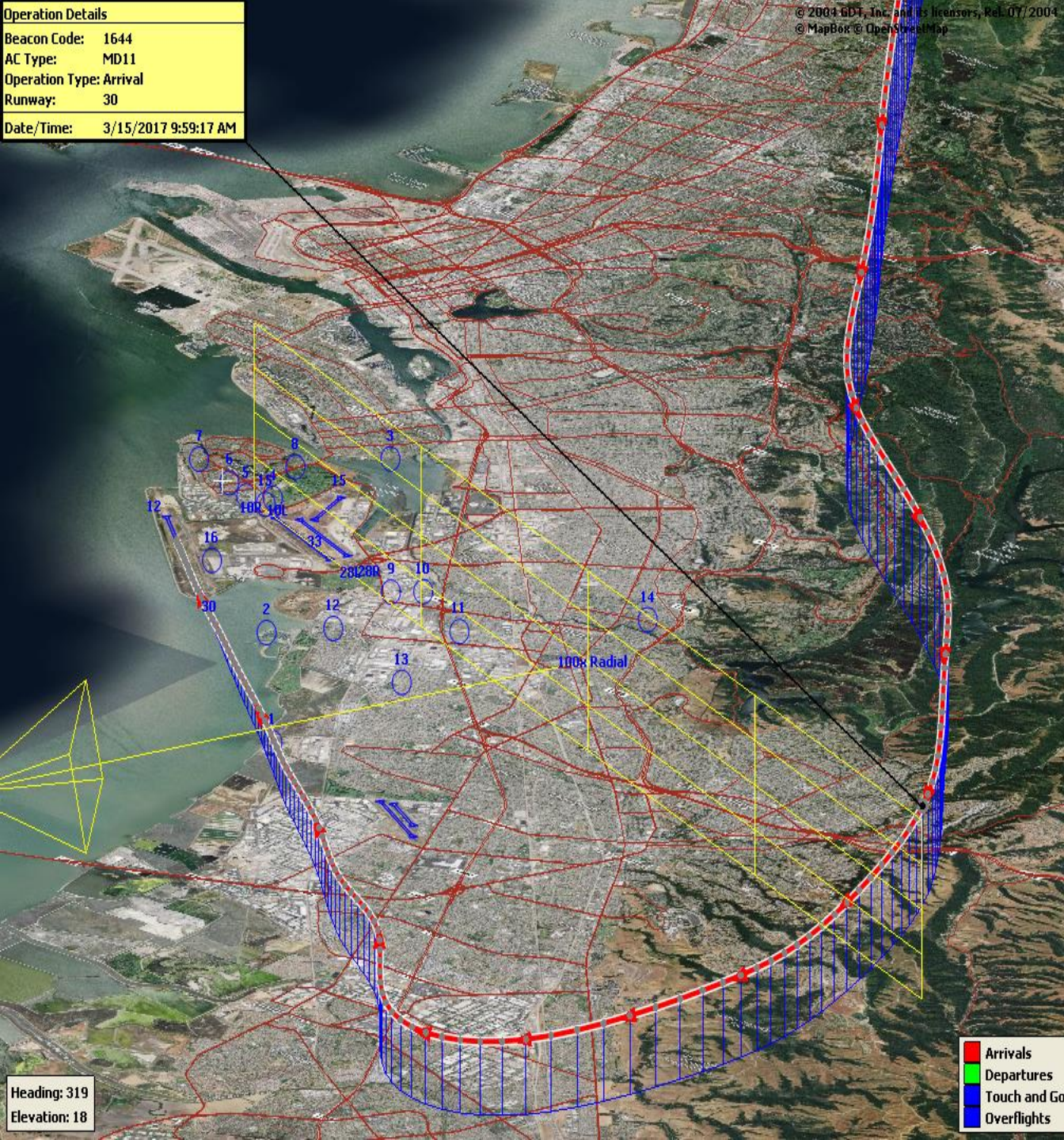
Operation Details	
Beacon Code:	1644
AC Type:	MD11
Operation Type:	Arrival
Runway:	30
Date/Time:	3/15/2017 9:59:17 AM

© 2004 GDT, Inc. and its licensors, Rel. 07/2004
 © MapBox © OpenStreetMap

100 Degree Radial At 3,000 ft. NAP

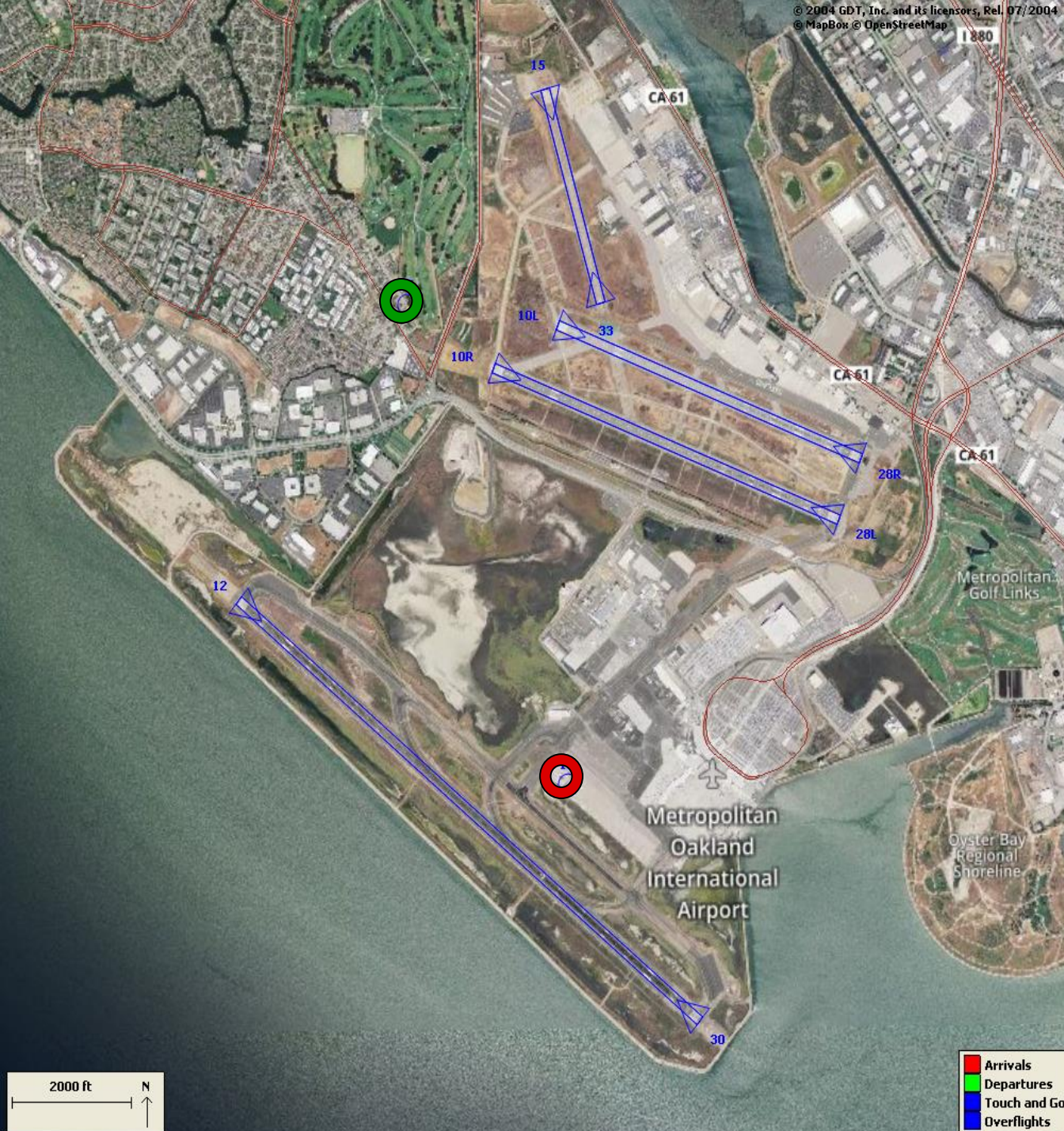
2024Q4
99% Compliance
(689 total landings)
(7 non-compliant)

2023Q4
98% Compliance
(1,024 total landings)
(19 non-compliant)



- Arrivals
- Departures
- Touch and Go
- Overflights

Heading: 319
 Elevation: 18



Engine Run-up NAP

2024Q4

**100% Compliance
(10 engine run-ups)*
(0 non-compliant)**

2023Q4

**100% Compliance
(14 engine run-ups)
(0 non-compliant)**

***Only above idle-power run-ups
recorded.**

Compliance Monitoring Quarterly Summary Comparison Fourth Quarter 2024 - Quarter-to-Quarter				
	2024Q3		2024Q4	
	Compl.	N/C	Compl.	N/C
Runway 28R/L Jet Departure Compliance	94%	6%	93%	7%
Total Airport-wide Corporate Jet Departures	1,930	127	2,306	165
Runway 10R/L Jet Landing Compliance	100%	0%	88%	12%
Total Southeast Plan Corporate Jet Landings	0	0	204	29
North Field VFR Departure Compliance	94%	6%	96%	4%
Total Runways 28R/L & 33 Departures	1,455	89	1,197	45
North Field Quiet Hours Compliance	92%	8%	86%	14%
Total North Field Quiet Hours Departures	314	27	226	36
Runway 30 BFI Right Turn Departure Compliance	100%	0%	100%	0%
Total Runway 30 Turbojet Departures	16,113	5	14,696	9
Night Time Departure Compliance	99%	1%	99%	1%
Total Runway 30 Night Turbojet Departures	3,206	28	2,791	34
Runway 12 Night Departure Compliance	100%	0%	98%	2%
Total Runway 12 Night Turbojet Departures	0	0	131	2
Runway 30 East Turn Departure Compliance	100%	0%	100%	0%
Total Runway 30 East Turn Departures	4,129	3	3,434	0
100 Degree Radial Turbojet Landing Compliance	99%	1%	99%	1%
Total 100 Degree Radial Turbojet Landings	789	8	682	7
Engine Runup Program Compliance	100%	0%	100%	0%
Total Evening and Nighttime Engine Runups	5	0	10	0
Note: N/C means non-compliant. Percentage values are rounded out.				

Table 1. North Field Night Aircraft Departure SEL Noise Measurements
Total Aircraft Departures = 262

Fourth Quarter 2024 (10:00 p.m. to 7:00 a.m.)

NMT Number	Aircraft Noise Events Below SEL 80 dBA	Aircraft Noise Events SEL 80 - 84.9 dBA			Aircraft Noise Events SEL 85 - 89.9 dBA			Aircraft Noise Events SEL ≥ 90 dBA			Total Aircraft Noise Events
		Amount	Nightly Average	As Percentage of Departures	Amount	Nightly Average	As Percentage of Departures	Amount	Nightly Average	As Percentage of Departures	
1	2	1	0.0	0.2%	0	0.0	0.0%	0	0.0	0.0%	3
2	0	0	0.0	0.0%	0	0.0	0.0%	0	0.0	0.0%	0
3	49	3	0.0	0.5%	0	0.0	0.0%	0	0.0	0.0%	52
4	93	76	0.8	13.4%	48	0.5	8.5%	16	0.2	2.8%	233
5	109	25	0.3	4.4%	14	0.2	2.5%	22	0.2	3.9%	170
6	60	8	0.1	1.4%	16	0.2	2.8%	12	0.1	2.1%	96
7	17	12	0.1	2.1%	13	0.1	2.3%	3	0.0	0.5%	45
8	53	19	0.2	3.4%	3	0.0	0.5%	0	0.0	0.0%	75
9	17	10	0.1	1.8%	5	0.1	0.9%	1	0.0	0.2%	33
10	136	43	0.5	7.6%	3	0.0	0.5%	1	0.0	0.2%	183
11	4	2	0.0	0.4%	0	0.0	0.0%	1	0.0	0.2%	7
12	12	7	0.1	1.2%	1	0.0	0.2%	0	0.0	0.0%	20
13	9	0	0.0	0.0%	0	0.0	0.0%	0	0.0	0.0%	9
14	87	0	0.0	0.0%	1	0.0	0.2%	0	0.0	0.0%	88
All NMTs	648	206	2	0	104	1	0	56	1	0	1014

Table 2. Aircraft SEL Noise Measurements in Alameda - Total Aircraft Departures = 234

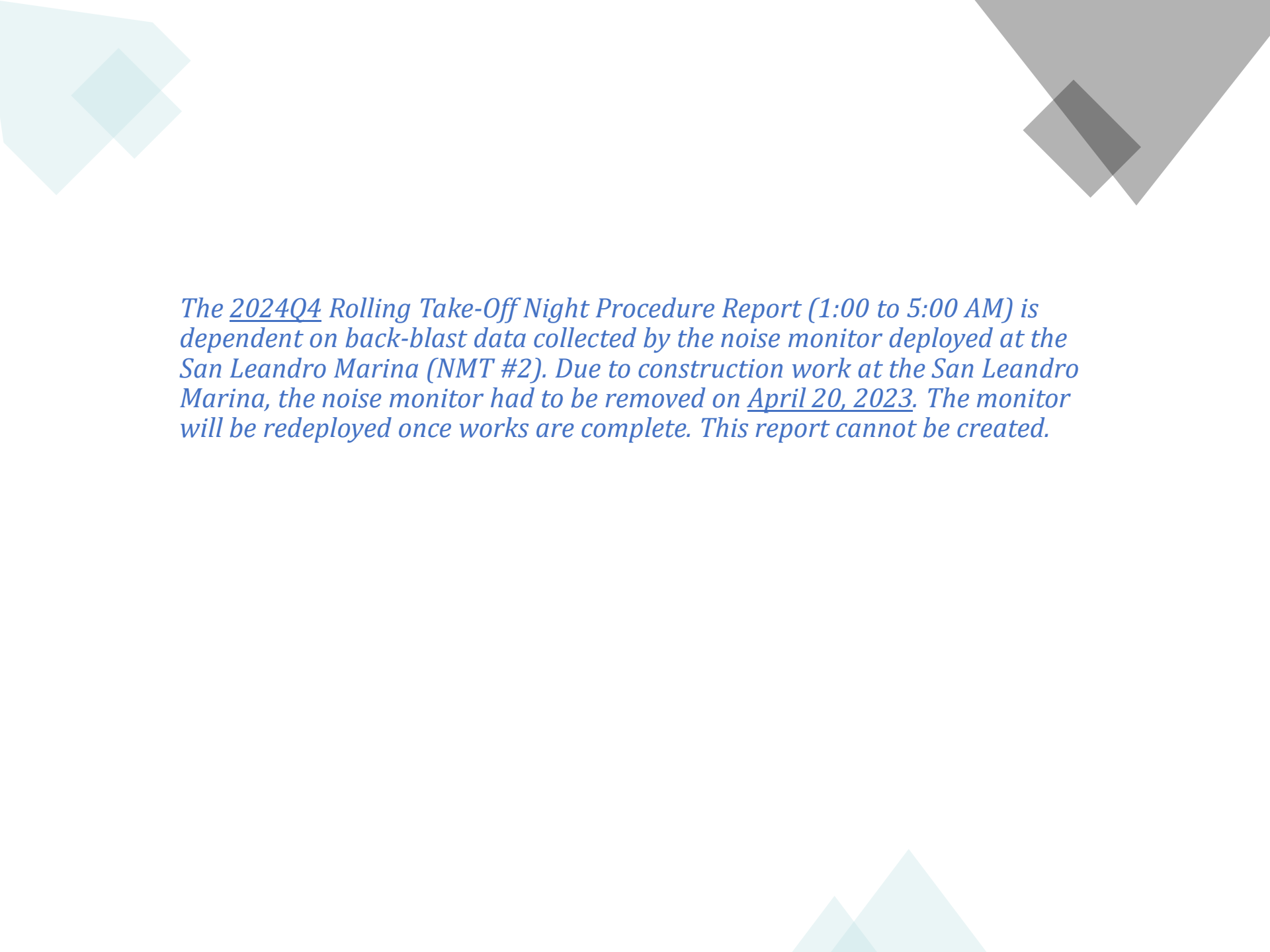
Fourth Quarter 2024 (10:00 p.m. to 7:00 a.m.)

NMT Number	Aircraft Noise Events Below SEL 80 dBA	Aircraft Noise Events SEL 80 - 84.9 dBA			Aircraft Noise Events SEL 85 - 89.9 dBA			Aircraft Noise Events SEL ≥ 90 dBA			Total Aircraft Noise Events
		Amount	Nightly Average	As Percentage of Departures	Amount	Nightly Average	As Percentage of Departures	Amount	Nightly Average	As Percentage of Departures	
3	49	3	0.0	1.3%	0	0.0	0.0%	0	0.0	0.0%	52
4	93	76	0.8	31.8%	48	0.5	20.1%	16	0.2	6.7%	233
5	109	25	0.3	10.5%	14	0.2	5.9%	22	0.2	9.2%	170
6	60	8	0.1	3.3%	16	0.2	6.7%	12	0.1	5.0%	96
7	17	12	0.1	5.0%	13	0.1	5.4%	3	0.0	1.3%	45
8	53	19	0.2	7.9%	3	0.0	1.3%	0	0.0	0.0%	75
Total	381	143	1.6		94	1.0		53	0.6		671

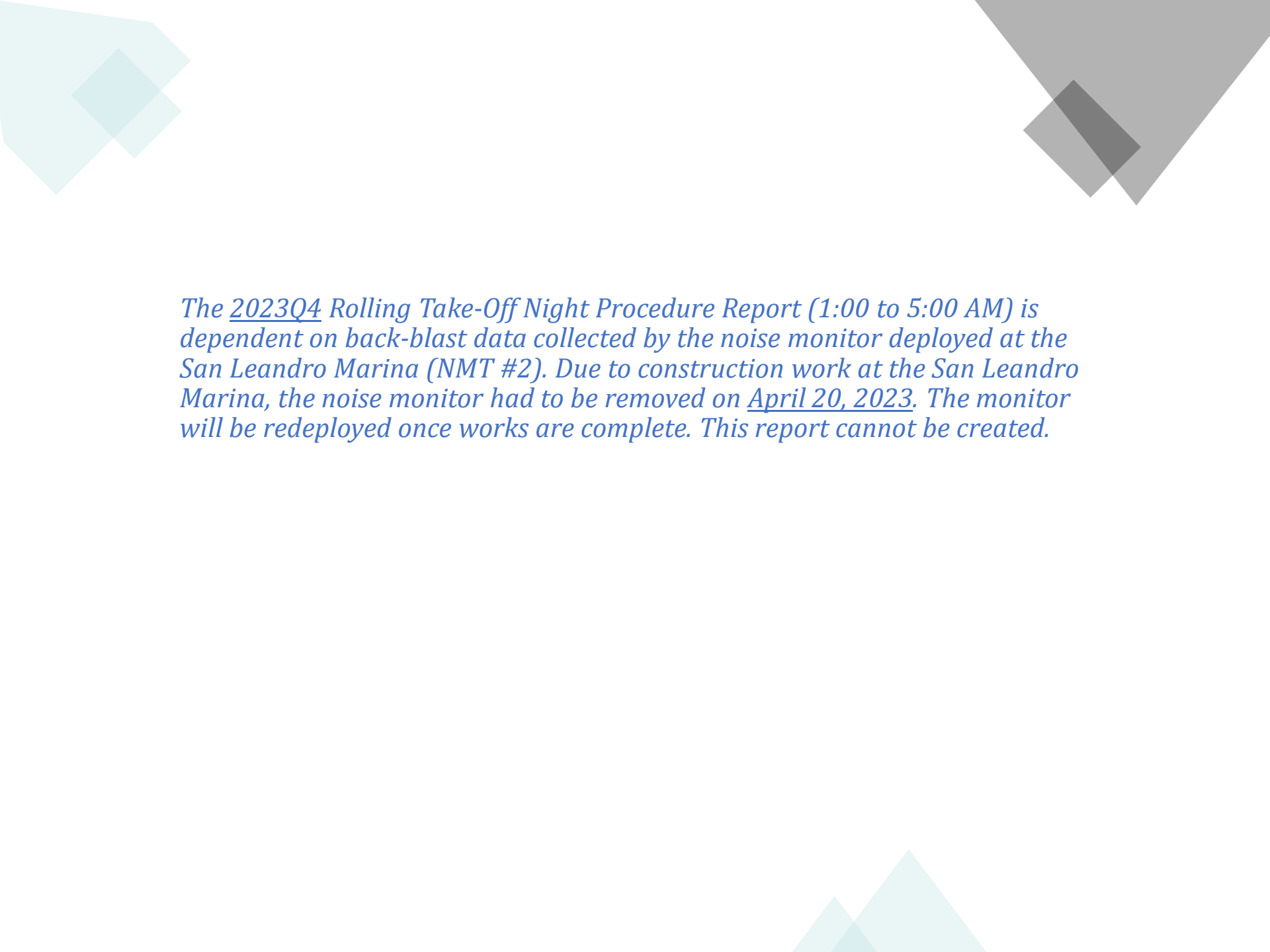
Table 3. Aircraft SEL Noise Measurements in San Leandro - Total Aircraft Departures = 28

Fourth Quarter 2024 (10:00 p.m. to 7:00 a.m.)

NMT Number	Aircraft Noise Events Below SEL 80 dBA	Aircraft Noise Events SEL 80 - 84.9 dBA			Aircraft Noise Events SEL 85 - 89.9 dBA			Aircraft Noise Events SEL ≥ 90 dBA			Total Aircraft Noise Events
		Amount	Nightly Average	As Percentage of Departures	Amount	Nightly Average	As Percentage of Departures	Amount	Nightly Average	As Percentage of Departures	
2	0	0	0.0	0.0%	0	0.0	0.0%	0	0.0	0.0%	0
9	17	10	0.1	3.0%	5	0.1	1.5%	1	0.0	0.3%	33
10	136	43	0.5	13.1%	3	0.0	0.9%	1	0.0	0.3%	183
11	4	2	0.0	0.6%	0	0.0	0.0%	1	0.0	0.3%	7
12	12	7	0.1	2.1%	1	0.0	0.3%	0	0.0	0.0%	20
13	9	0	0.0	0.0%	0	0.0	0.0%	0	0.0	0.0%	9
14	87	0	0.0	0.0%	1	0.0	0.3%	0	0.0	0.0%	88
Total	265	62	0.7		10	0.1		3	0.0		340



The 2024Q4 Rolling Take-Off Night Procedure Report (1:00 to 5:00 AM) is dependent on back-blast data collected by the noise monitor deployed at the San Leandro Marina (NMT #2). Due to construction work at the San Leandro Marina, the noise monitor had to be removed on April 20, 2023. The monitor will be redeployed once works are complete. This report cannot be created.



The 2023Q4 Rolling Take-Off Night Procedure Report (1:00 to 5:00 AM) is dependent on back-blast data collected by the noise monitor deployed at the San Leandro Marina (NMT #2). Due to construction work at the San Leandro Marina, the noise monitor had to be removed on April 20, 2023. The monitor will be redeployed once works are complete. This report cannot be created.

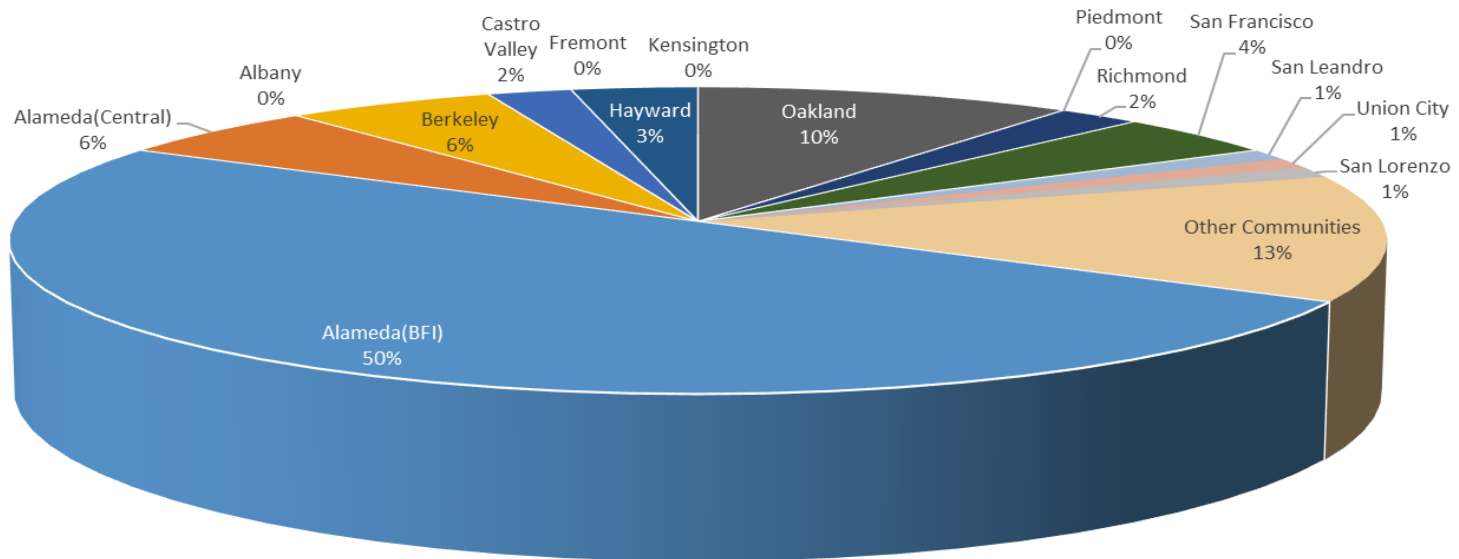
Oakland Airport (OAK)
Noise Complaint Summary
October 2024

Community	Callers	Complaints
Alameda(BFI)	45	324
Alameda(Central)	5	29
Albany	0	0
Berkeley	5	455
Castro Valley	2	36
Fremont	0	0
Hayw ard	3	7
Kensington	0	0
Oakland	9	2555
Piedmont	0	0
Richmond	2	32
San Francisco	4	20
San Leandro	1	1
Union City	1	22
San Lorenzo	1	1
Other Communities	12	43
Total	90	3525
Complaints by Type		
E-mail	2460	
View point App	1065	
Complaints by Time of Day		
Day (0700 - 1900)	889	
Evening (1900 - 2200)	991	
Night (2200 - 0700)	1645	
Complaints by Type of Operation		
Arrivals	2301	
Departures	1017	
Over-flights	134	
Touch & Go	73	
Not Linked to an Operation	0	
Complaints by Type of Aircraft		
Business Jet	294	
Helicopter	54	
Jet	2721	
Military	0	
Not Reported (not linked to an aircraft)	0	
Other (Type information not available)	33	
Propeller	370	
Turbo-prop	53	

Number of Callers

October 2024

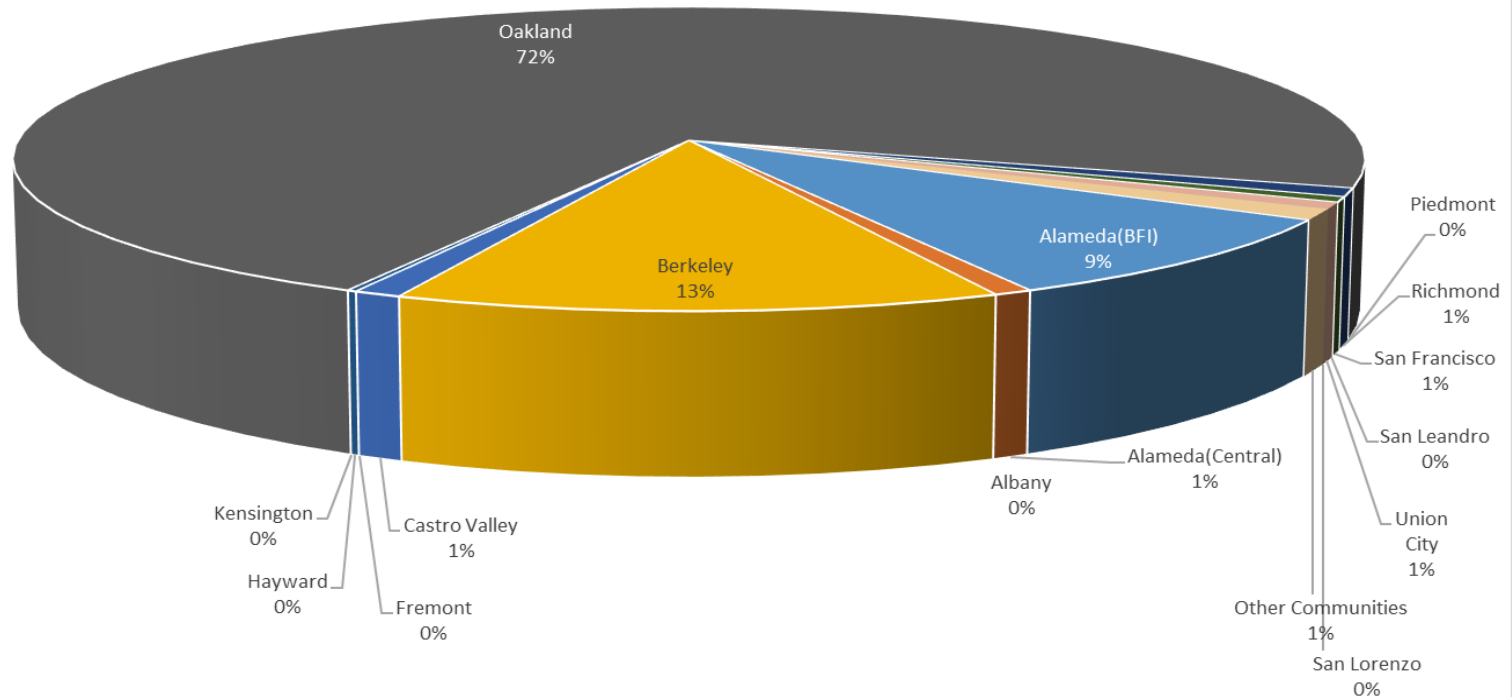
Noise Complaints Summary by Number of Callers



Number of Complaints

October 2024

Noise Complaints Summary by Number of Complaints



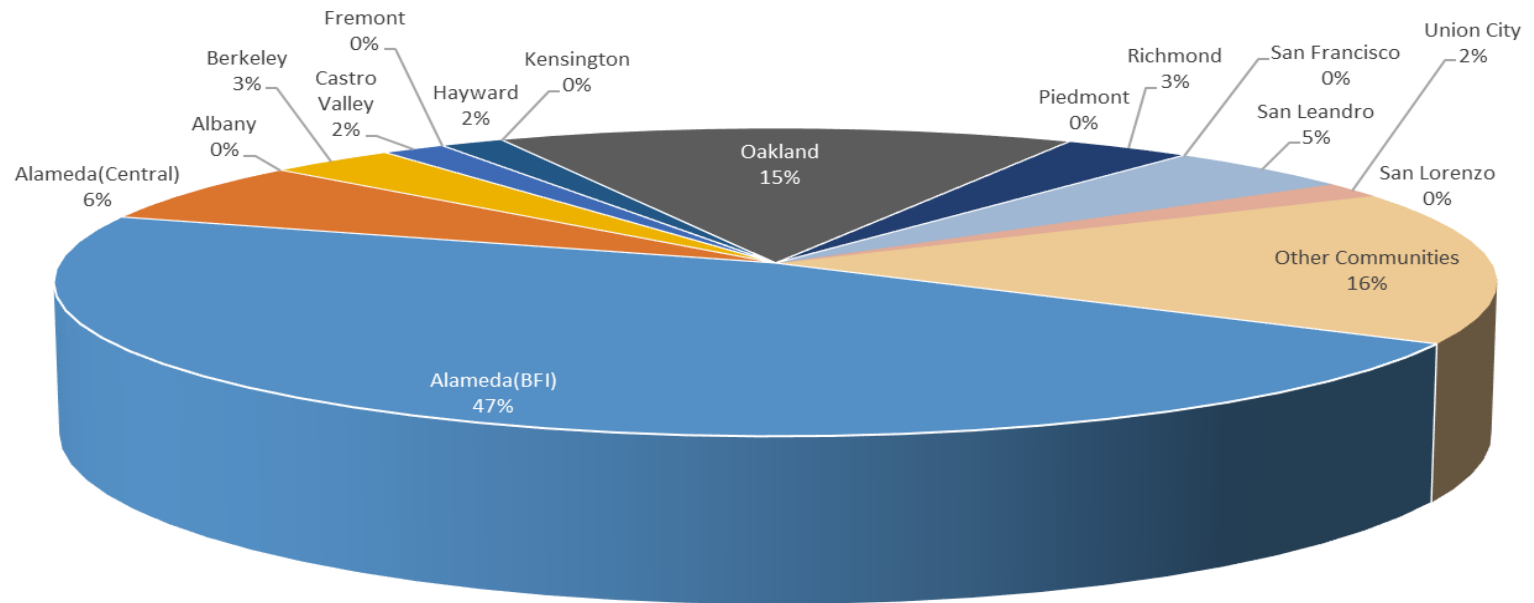
Oakland Airport (OAK)
Noise Complaint Summary
November 2024

Community	Callers	Complaints
Alameda(BFI)	29	322
Alameda(Central)	4	46
Albany	0	0
Berkeley	2	289
Castro Valley	1	20
Fremont	0	0
Hayw ard	1	1
Kensington	0	0
Oakland	9	1790
Piedmont	0	0
Richmond	2	292
San Francisco	0	0
San Leandro	3	16
Union City	1	4
San Lorenzo	0	0
Other Communities	10	26
Total	62	2806
Complaints by Type		
E-mail	2079	
View point App	727	
Complaints by Time of Day		
Day (0700 - 1900)	820	
Evening (1900 - 2200)	899	
Night (2200 - 0700)	1087	
Complaints by Type of Operation		
Arrivals	1591	
Departures	1054	
Over-flights	56	
Touch & Go	105	
Not Linked to an Operation	0	
Complaints by Type of Aircraft		
Business Jet	128	
Helicopter	17	
Jet	2358	
Military	0	
Not Reported (not linked to an aircraft)	0	
Other (Type information not available)	25	
Propeller	227	
Turbo-prop	51	

Number of Callers

November 2024

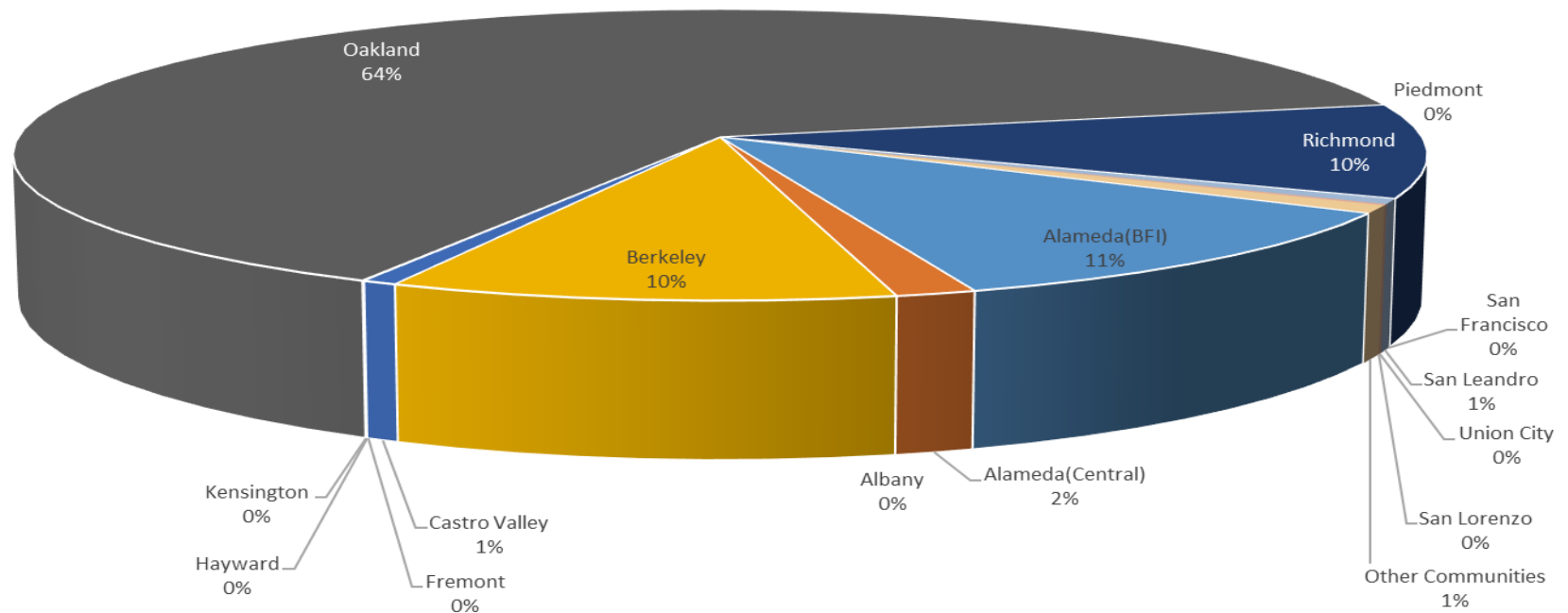
Noise Complaints Summary by Number of Callers



Number of Complaints

November 2024

Noise Complaints Summary by Number of Complaints



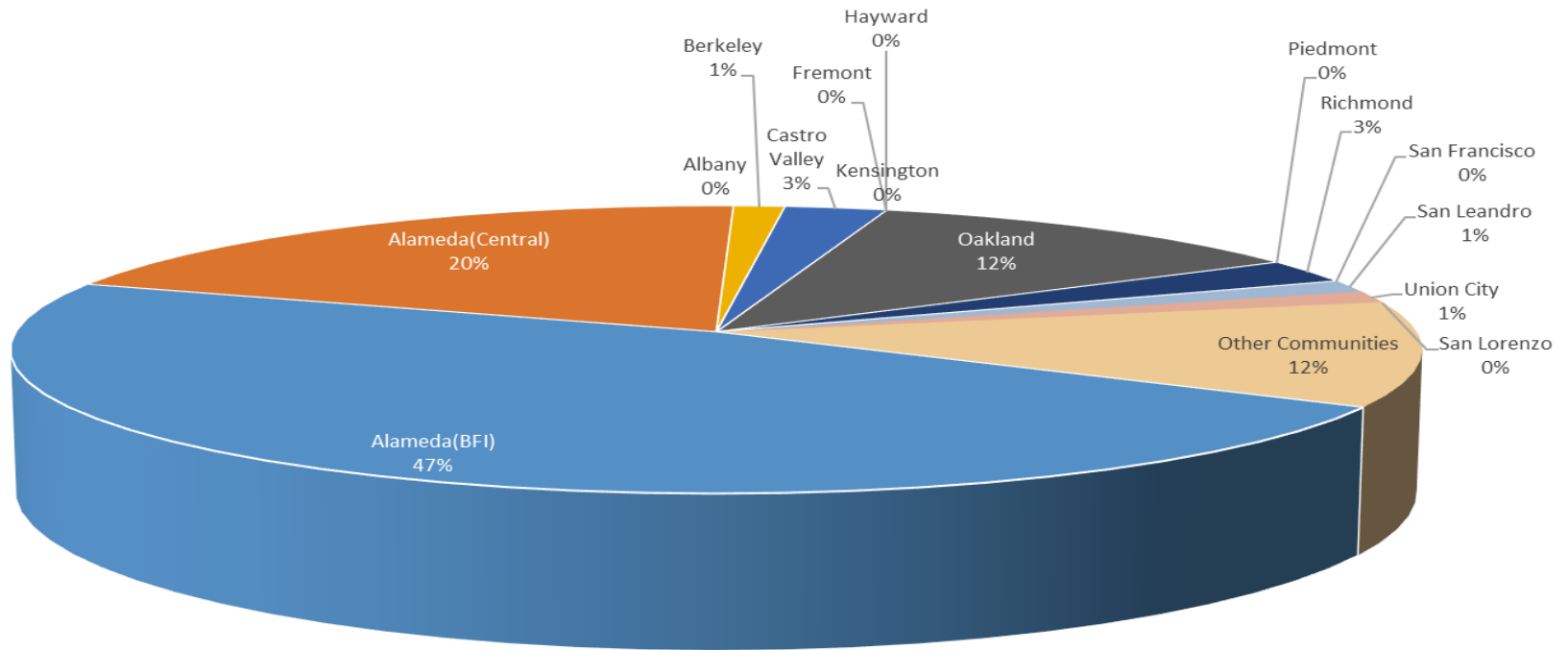
**Oakland Airport (OAK)
Noise Complaint Summary
December 2024**

Community	Callers	Complaints
Alameda(BFI)	36	569
Alameda(Central)	15	60
Albany	0	0
Berkeley	1	435
Castro Valley	2	25
Fremont	0	0
Hayw ard	0	0
Kensington	0	0
Oakland	9	3211
Piedmont	0	0
Richmond	2	288
San Francisco	0	0
San Leandro	1	12
Union City	1	4
San Lorenzo	0	0
Other Communities	9	36
Total	76	4640
Complaints by Type		
E-mail	3348	
View point App	1292	
Complaints by Time of Day		
Day (0700 - 1900)	639	
Evening (1900 - 2200)	884	
Night (2200 - 0700)	3117	
Complaints by Type of Operation		
Arrivals	3266	
Departures	1288	
Over-flights	47	
Touch & Go	39	
Not Linked to an Operation	0	
Complaints by Type of Aircraft		
Business Jet	190	
Helicopter	31	
Jet	4223	
Military	0	
Not Reported (not linked to an aircraft)	0	
Other (Type information not available)	18	
Propeller	106	

Number of Callers

December 2024

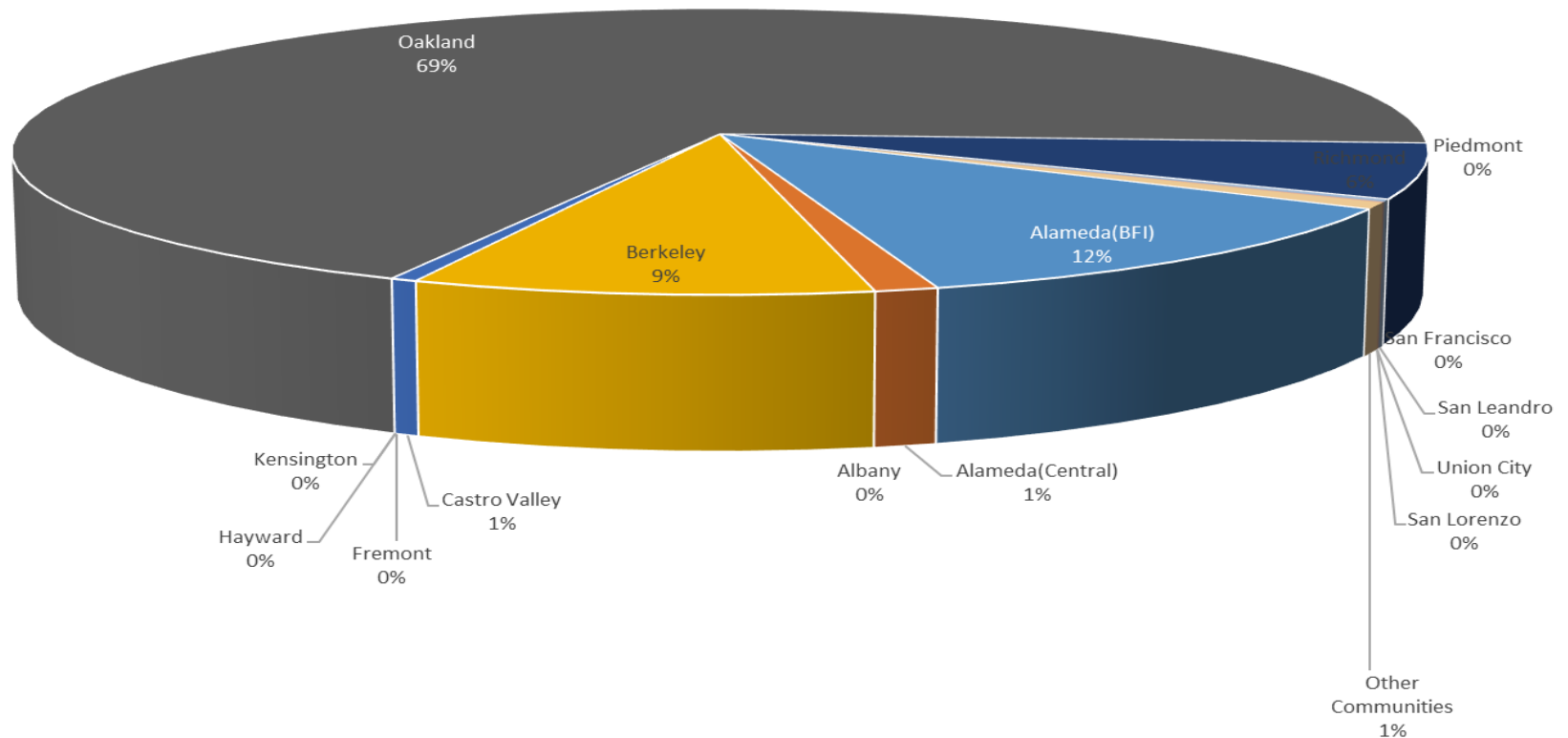
Noise Complaints Summary by Number of Callers

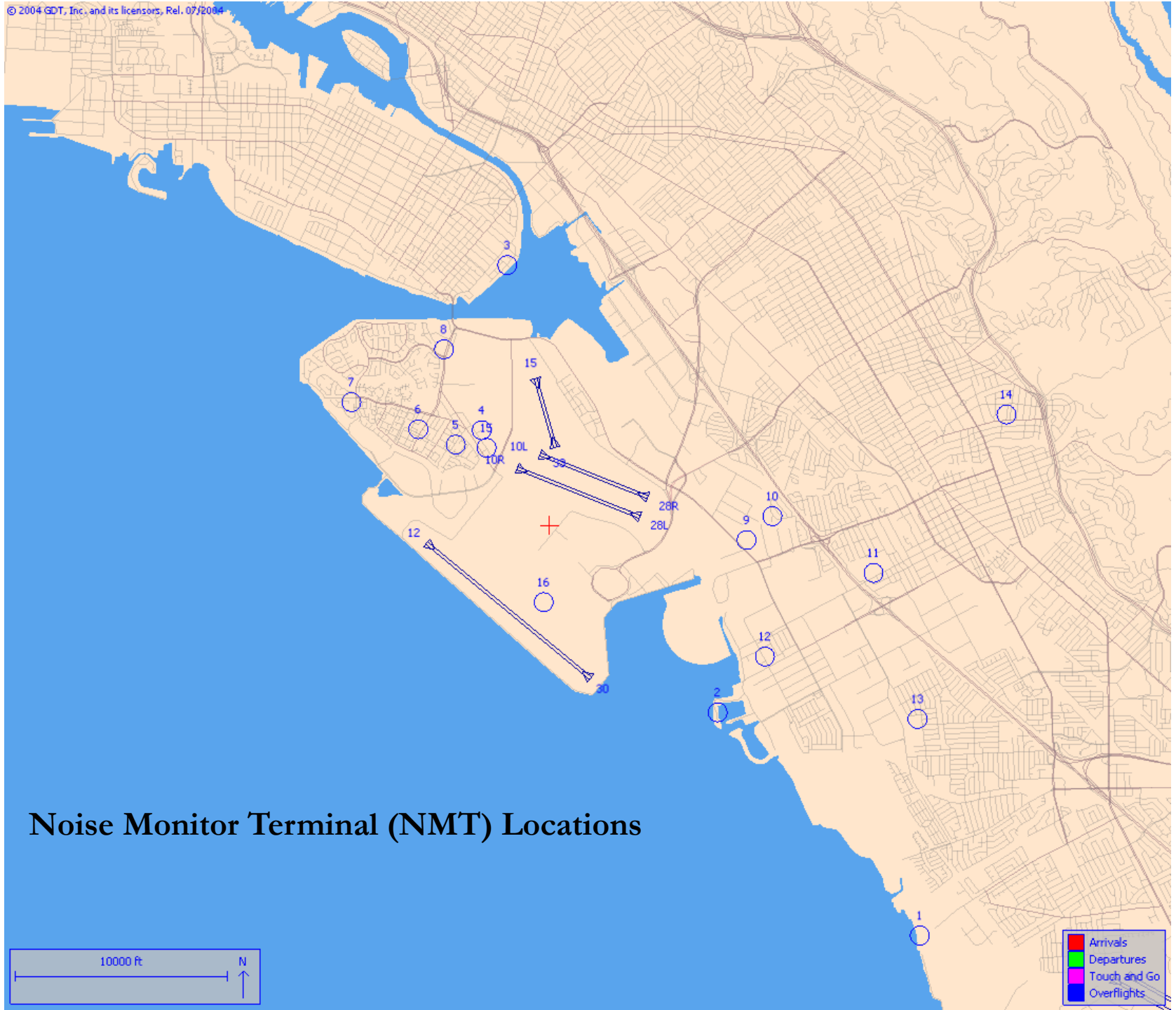


Number of Complaints

December 2024

Noise Complaints Summary by Number of Complaints





Noise Monitor Terminal (NMT) Locations