

# NOISE FORUM SUMMARY

North/South Field Working Groups



**NOISE ABATEMENT REPORT**

**FIRST QUARTER 2025**

# Disclaimer

The Port of Oakland's Airport Noise and Operations Monitoring System (ANOMS) is the source of the data used in this report. Although ANOMS is a very sophisticated computer program that provides a state-of-the-art solution for collecting aircraft noise complaints. The number of aircraft noise complaints in the report are for informational purposes. Airport staff carefully reviews the data for accuracy and will make corrections whenever possible.

+  
•  
0

Compliance Monitoring Quarterly Summary Comparison First Quarter 2025				
	2024Q1		2025Q1	
	Compl.	N/C	Compl.	N/C
Runway 28R/L Jet Departure Compliance	94%	6%	93%	7%
Total Airport-wide Corporate Jet Departures	2,547	156	2,321	169
Runway 10R/L Jet Landing Compliance	87%	13%	89%	11%
Total Southeast Plan Corporate Jet Landings	490	75	321	39
North Field VFR Departure Compliance	95%	5%	96%	4%
Total Runways 28R/L & 33 Departures	175	9	1,263	54
North Field Quiet Hours Compliance	83%	17%	81%	19%
Total North Field Quiet Hours Departures	174	35	248	60
Runway 30 BFI Right Turn Departure Compliance	100%	0%	100%	0%
Total Runway 30 Turbojet Departures	12,780	1	13,048	3
Night Time Departure Compliance	99%	1%	99%	1%
Total Runway 30 Night Turbojet Departures	2,507	22	2,534	13
Runway 12 Night Departure Compliance	100%	0%	97%	3%
Total Runway 12 Night Turbojet Departures	437	0	265	9
Runway 30 East Turn Departure Compliance	100%	0%	100%	0%
Total Runway 30 East Turn Departures	3,083	4	3,009	4
100 Degree Radial Turbojet Landing Compliance	99%	1%	99%	1%
Total 100 Degree Radial Turbojet Landings	610	4	594	4
Engine Runup Program Compliance	100%	0%	100%	0%
Total Evening and Nighttime Engine Runups	4	0	1	0
Note: N/C means non-compliant. Percentage values are rounded out.				



Operation Details  
Beacon Code: 3373  
AC Type: H25C  
Operation Type: Departure  
Runway: 28L  
Date/Time: 12/13/2016 8:26:14 AM

© 2004 GDT, Inc. and its licensors, Rel. 07/2004  
© MapBox © OpenStreetMap

## Runway 28R/L Jet Departure NAP

**2025Q1**  
**93% Compliance**  
**(2,490 total departures)**  
**(169 non-compliant)**

**2024Q1**  
**94% Compliance**  
**(2,703 total departures)**  
**(156 non-compliant)**

Heading: 325  
Elevation: 15

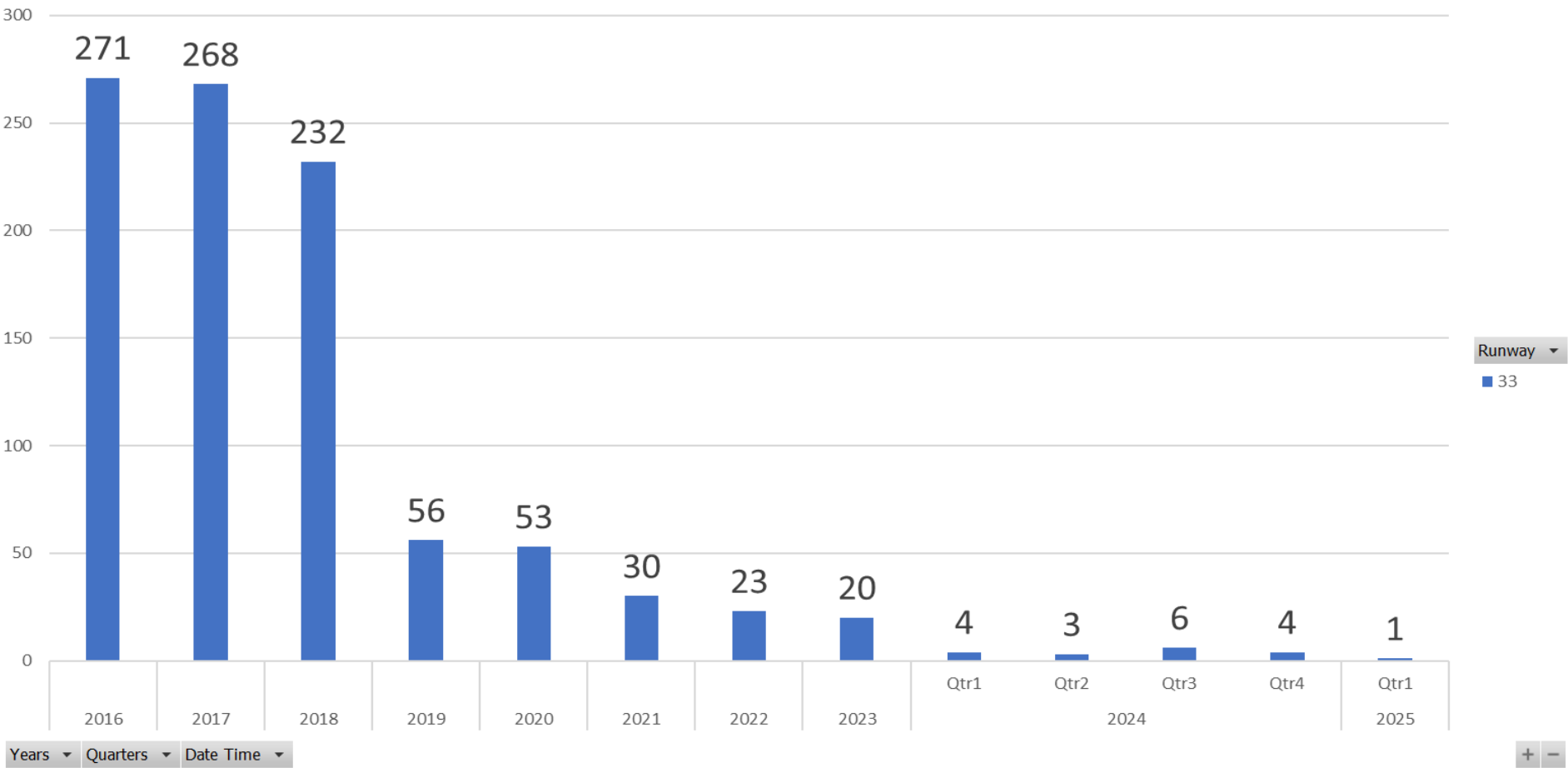
Arrivals  
Departures  
Touch and Go  
Overflights

# RUNWAY 33 JET DEPARTURES

## First Quarter 2025

Count of Aircraft Type

### Runway 33 Jet Departure Trend Analysis





Operation Details  
Beacon Code: 4564  
AC Type: C550  
Operation Type: Arrival  
Runway: 10R  
Date/Time: 12/15/2016 8:15:42 PM

© 2004 CDL, Inc. and its licensors, Rel. 07/2004  
© MapBox © OpenStreetMap

## Runway 10R/L Jet Landing NAP

**2025Q1**

**89% Compliance**  
**(360 total landings)**  
**(39 non-compliant)**

**2024Q1**

**87% Compliance**  
**(565 total landings)**  
**(75 non-compliant)**

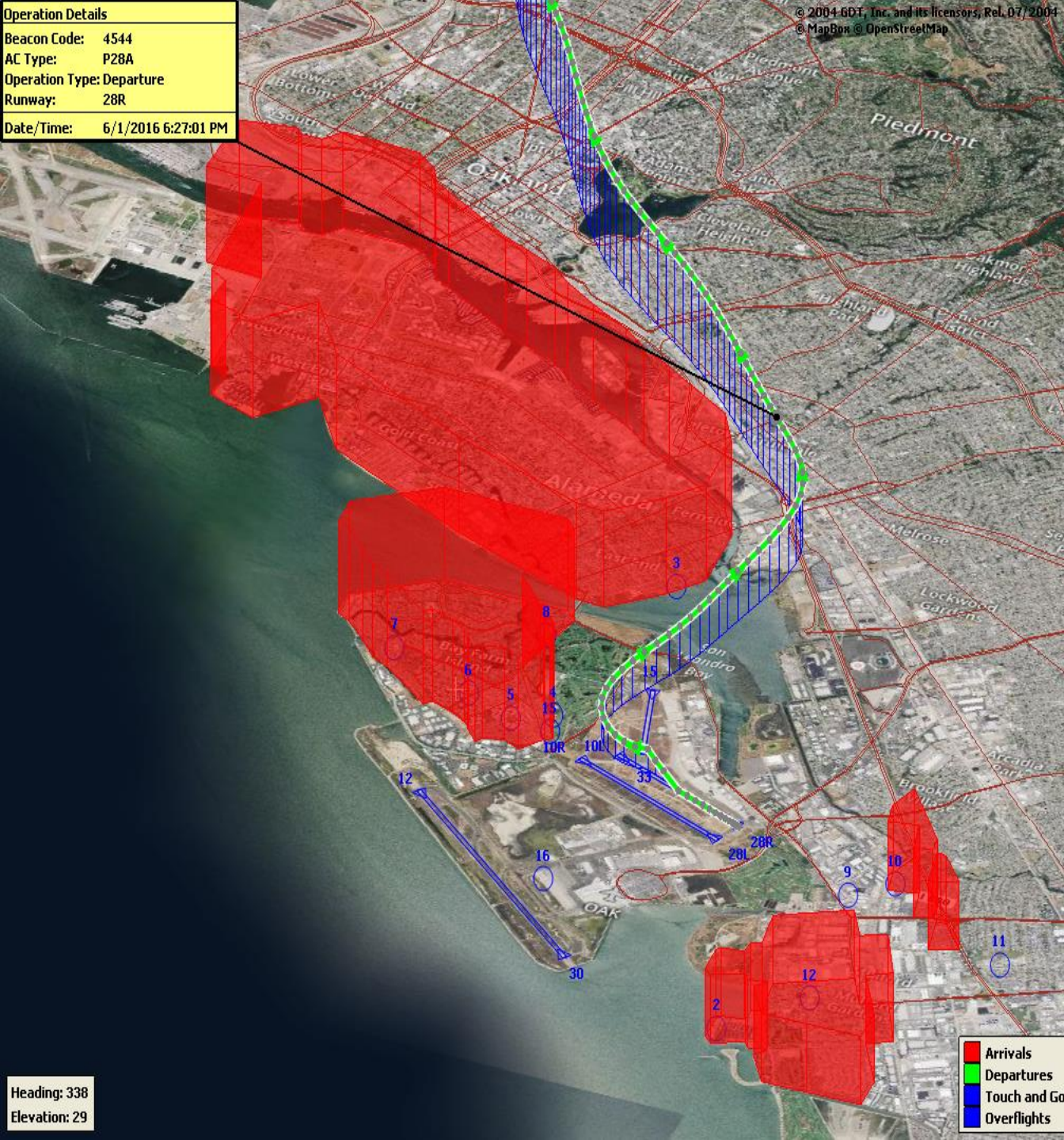
Heading: 325  
Elevation: 15

Arrivals  
Departures  
Touch and Go  
Overflights





Operation Details	
Beacon Code:	4544
AC Type:	P28A
Operation Type:	Departure
Runway:	28R
Date/Time:	6/1/2016 6:27:01 PM



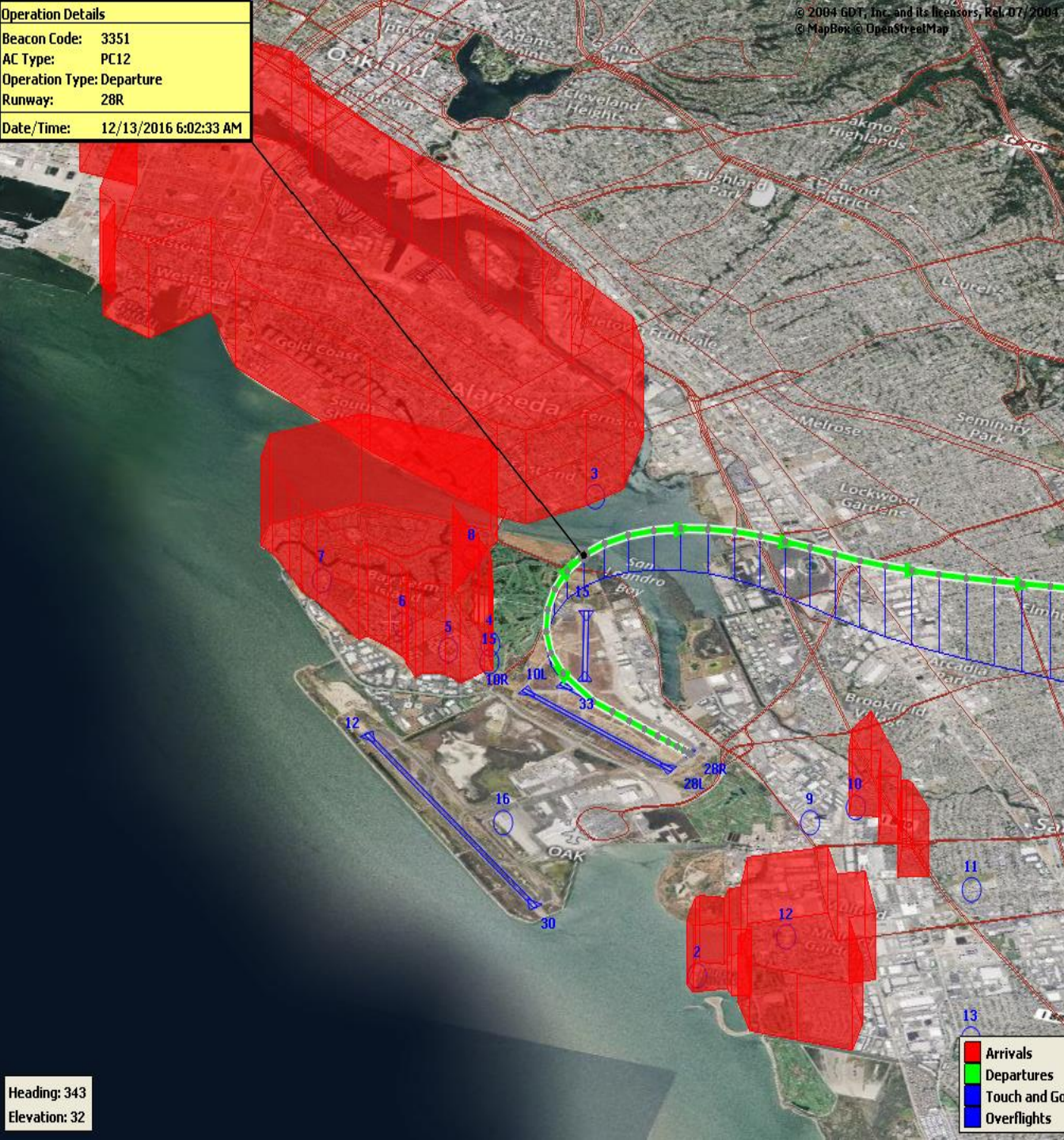
## VFR Aircraft Departure NAP

**2025Q1**  
**96% Compliance**  
**(1,317 total departures)**  
**(54 non-compliant)**

**2024Q1**  
**95% Compliance**  
**(184 total departures)**  
**(9 non-compliant)**



Operation Details  
Beacon Code: 3351  
AC Type: PC12  
Operation Type: Departure  
Runway: 28R  
Date/Time: 12/13/2016 6:02:33 AM



## North Field Quiet Hours NAP

**2025Q1**  
**81% Compliance**  
**(308 total departures)**  
**(60 non-compliant)**

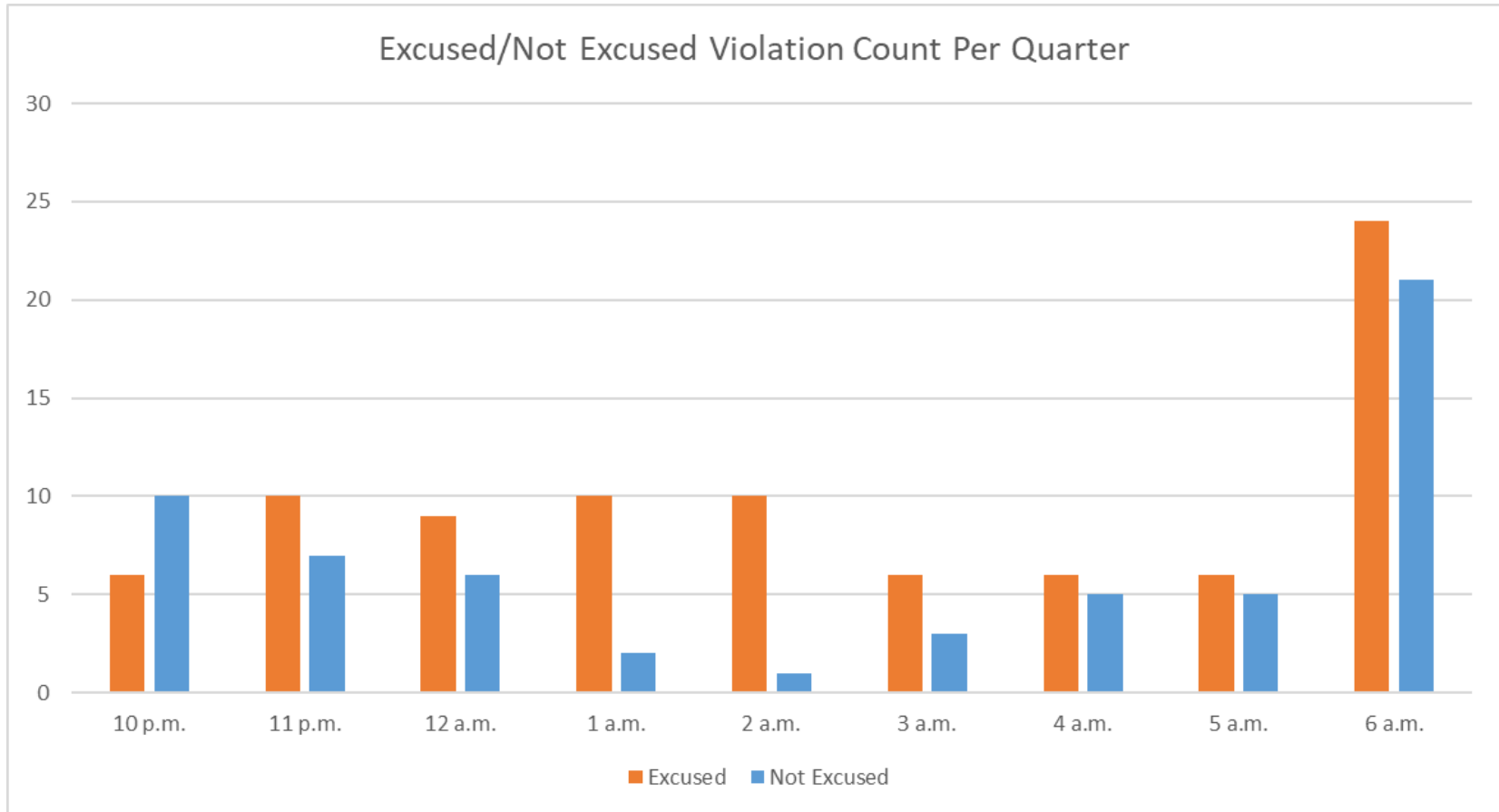
**2024Q1**  
**83% Compliance**  
**(209 total departures)**  
**(35 non-compliant)**

Heading: 343  
Elevation: 32

- Arrivals
- Departures
- Touch and Go
- Overflights



# Quartely North Field Quiet Hours NAP Non-Compliant Per Quarter



**Operation Details**  
 Beacon Code: 3641  
 AC Type: B737  
 Operation Type: Departure  
 Runway: 30  
 Date/Time: 8/22/2017 10:16:59 PM



## Night Time Departure NAP

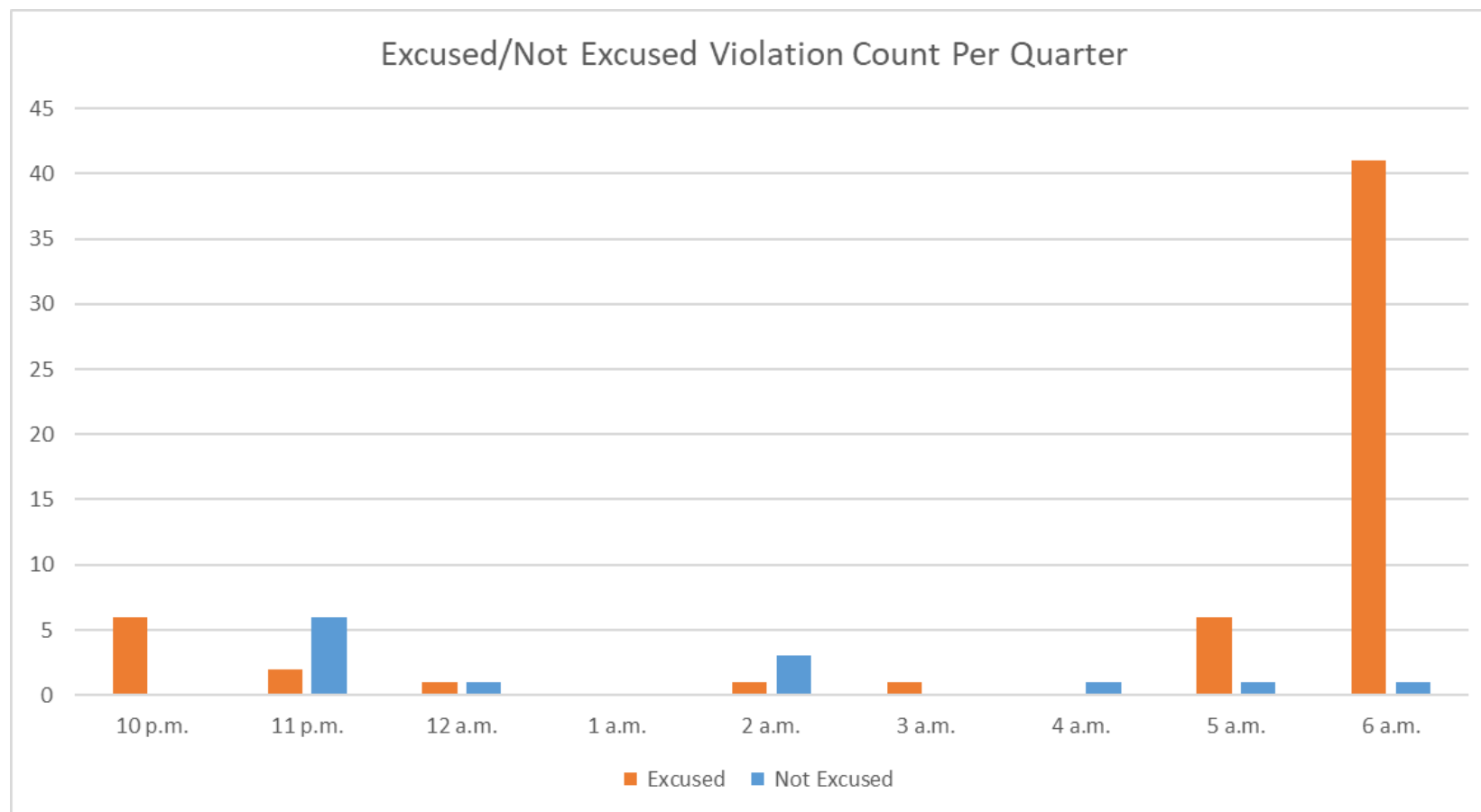
**2025Q1**  
**99% Compliance**  
**(2,547 total departures)**  
**(13 non-compliant)**

\*REBAS Gate non-compliant = 13

**2024Q1**  
**99% Compliance**  
**(2,529 total departures)**  
**(22 non-compliant)**



# Quarterly Night Time NAP Non-Compliant Count Per Quarter



Operation Details  
Beacon Code: 3345  
AC Type: B763  
Operation Type: Departure  
Runway: 12  
Date/Time: 12/15/2016 3:12:56 AM

Heading: 1  
Elevation: 38



## Runway 12 Night Departure NAP

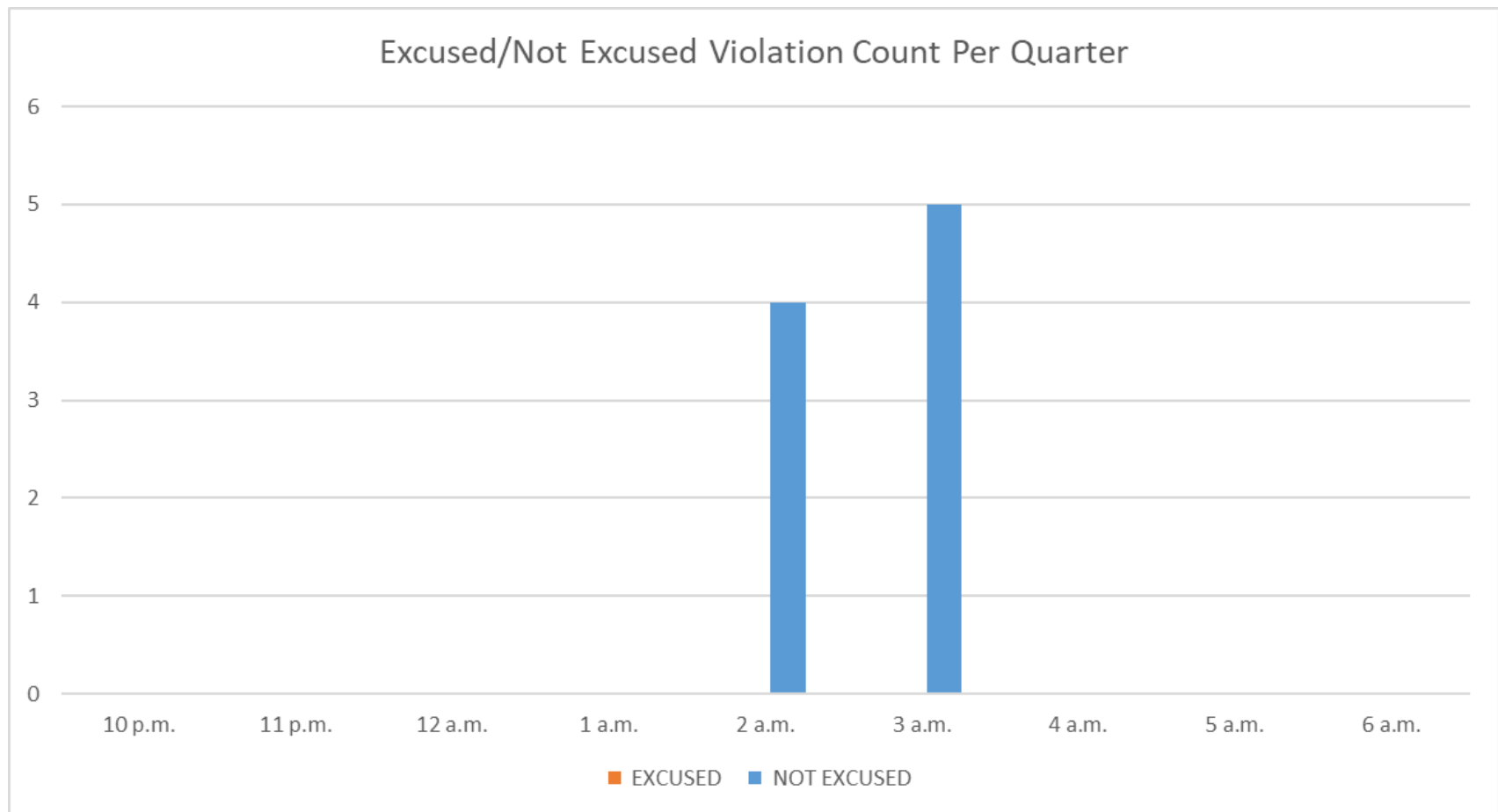
**2025Q1**  
**97% Compliance**  
**(274 total departures)**  
**(9 non-compliant)**

**2024Q1**  
**100% Compliance**  
**(437 total departures)**  
**(0 non-compliant)**

Arrivals  
Departures  
Touch and Go  
Overflights



# Quartely Runway 12 Night Departure Non-Compliant Count Per Quarter



Operation Details	
Beacon Code:	3374
AC Type:	B737
Operation Type:	Departure
Runway:	30
Date/Time:	1/7/2019 8:57:05 AM

© 2004 GDT, Inc. and its licensors, Rel. 07/2004  
© MapBox © OpenStreetMap

## Runway 30 Bay Farm Right Turn NAP

**2025Q1**  
**100% Compliance**  
**(13,051 total departures)**  
**(3 non-compliant)**

**2024Q1**  
**100% Compliance**  
**(12,781 total departures)**  
**(1 non-compliant)**

Heading: 299  
Elevation: 36





Operation Details  
Beacon Code: 3231  
AC Type: B738  
Operation Type: Departure  
Runway: 30  
Date/Time: 4/7/2024 8:05:16 PM



## Runway 30 East Turn NAP

**2025Q1**  
**100% Compliance**  
**(3,013 total departures)**  
**(4 non-compliant)**

\*Excused Departures = 3

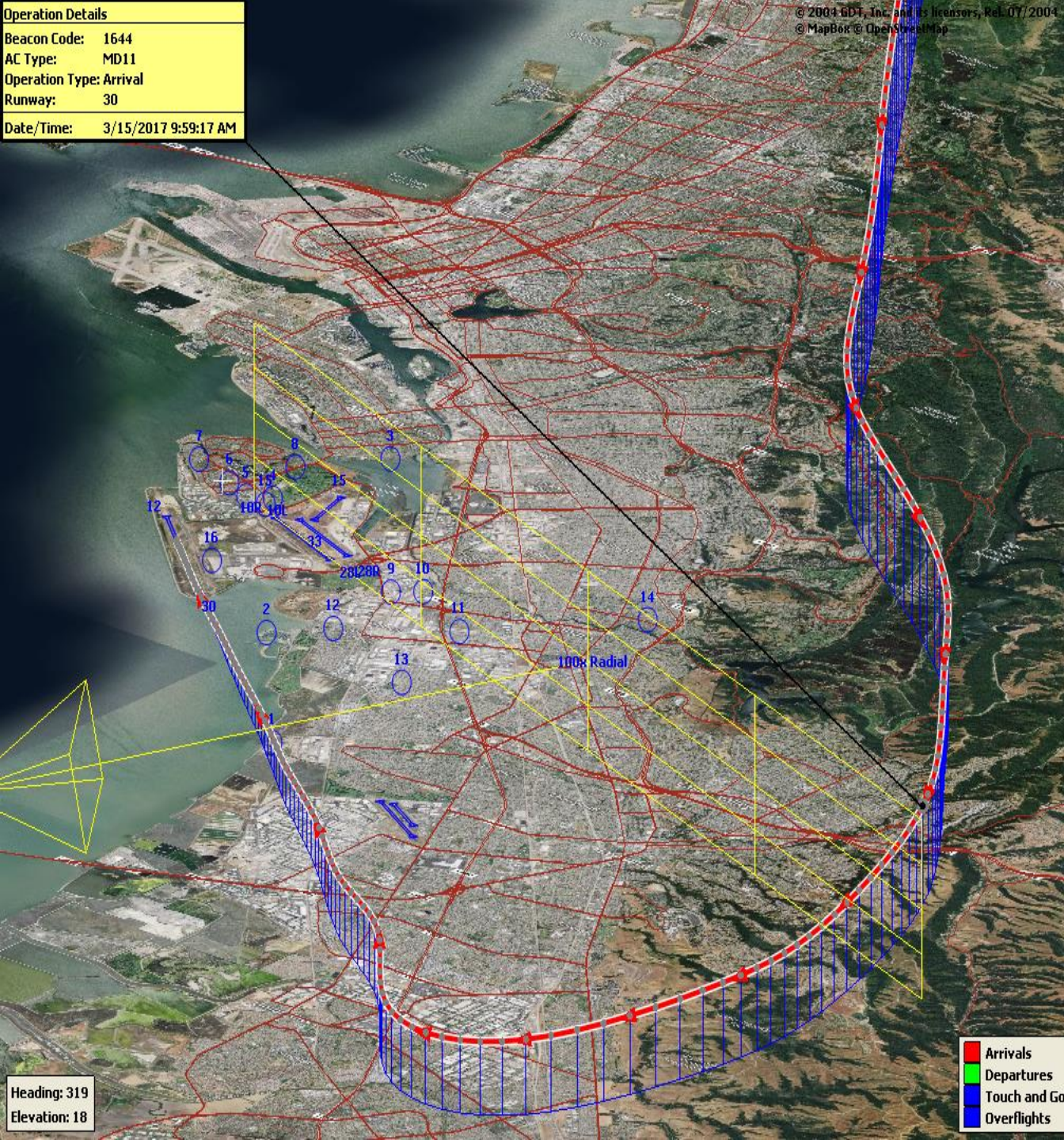
**2024Q1**  
**100% Compliance**  
**(3,087 total departures)**  
**(4 non-compliant)**

Heading 310°  
Elevation 24°



Operation Details	
Beacon Code:	1644
AC Type:	MD11
Operation Type:	Arrival
Runway:	30
Date/Time:	3/15/2017 9:59:17 AM

© 2004 GDT, Inc. and its licensors, Rel. 07/2004  
© MapBox © OpenStreetMap



## 100 Degree Radial At 3,000 ft. NAP

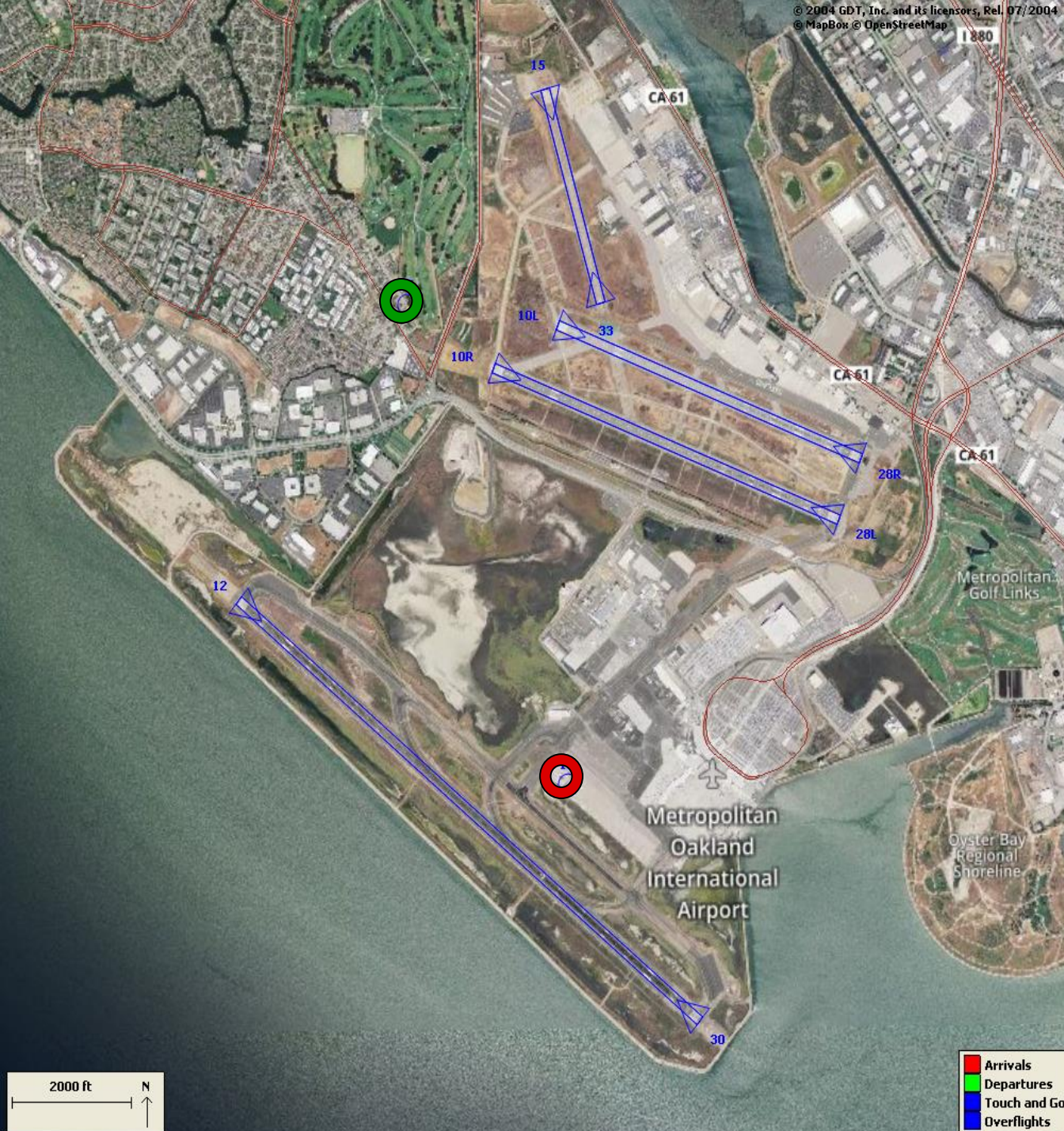
**2025Q1**  
**99% Compliance**  
**(598 total landings)**  
**(4 non-compliant)**

**2024Q1**  
**99% Compliance**  
**(614 total landings)**  
**(4 non-compliant)**

Heading: 319  
Elevation: 18

- Arrivals
- Departures
- Touch and Go
- Overflights





## Engine Run-up NAP

**2025Q1**

**100% Compliance  
(1 engine run-ups)\*  
(0 non-compliant)**

**2024Q1**

**100% Compliance  
(4 engine run-ups)  
(0 non-compliant)**

**\*Only above idle-power run-ups  
recorded.**

Compliance Monitoring Quarterly Summary Comparison First Quarter 2025 - Quarter-to-Quarter				
	2024Q4		2025Q1	
	Compl.	N/C	Compl.	N/C
Runway 28R/L Jet Departure Compliance	93%	7%	93%	7%
Total Airport-wide Corporate Jet Departures	2,306	165	2,321	169
Runway 10R/L Jet Landing Compliance	88%	12%	89%	11%
Total Southeast Plan Corporate Jet Landings	204	29	321	39
North Field VFR Departure Compliance	96%	4%	96%	4%
Total Runways 28R/L & 33 Departures	1,197	45	1,263	54
North Field Quiet Hours Compliance	86%	14%	81%	19%
Total North Field Quiet Hours Departures	226	36	248	60
Runway 30 BFI Right Turn Departure Compliance	100%	0%	100%	0%
Total Runway 30 Turbojet Departures	14,696	9	13,048	3
Night Time Departure Compliance	99%	1%	99%	1%
Total Runway 30 Night Turbojet Departures	2,791	34	2,534	13
Runway 12 Night Departure Compliance	98%	2%	97%	3%
Total Runway 12 Night Turbojet Departures	131	2	265	9
Runway 30 East Turn Departure Compliance	100%	0%	100%	0%
Total Runway 30 East Turn Departures	3,434	0	3,009	4
100 Degree Radial Turbojet Landing Compliance	99%	1%	99%	1%
Total 100 Degree Radial Turbojet Landings	682	7	594	4
Engine Runup Program Compliance	100%	0%	100%	0%
Total Evening and Nighttime Engine Runups	10	0	1	0
Note: N/C means non-compliant. Percentage values are rounded out.				



**Table 1. North Field Night Aircraft Departure SEL Noise Measurements**  
**Total Aircraft Departures = 308**

First Quarter 2025 (10:00 p.m. to 7:00 a.m.)

NMT Number	Aircraft Noise Events Below SEL 80 dBA	Aircraft Noise Events SEL 80 - 84.9 dBA			Aircraft Noise Events SEL 85 - 89.9 dBA			Aircraft Noise Events SEL ≥ 90 dBA			Total Aircraft Noise Events
		Amount	Nightly Average	As Percentage of Departures	Amount	Nightly Average	As Percentage of Departures	Amount	Nightly Average	As Percentage of Departures	
1	3	1	0.0	0.2%	0	0.0	0.0%	0	0.0	0.0%	4
2	0	0	0.0	0.0%	0	0.0	0.0%	0	0.0	0.0%	0
3	73	5	0.1	0.9%	0	0.0	0.0%	0	0.0	0.0%	78
4	98	101	1.1	17.8%	55	0.6	9.7%	22	0.2	3.9%	276
5	159	30	0.3	5.3%	27	0.3	4.8%	16	0.2	2.8%	232
6	40	19	0.2	3.4%	24	0.3	4.2%	5	0.1	0.9%	88
7	22	21	0.2	3.7%	14	0.2	2.5%	1	0.0	0.2%	58
8	83	26	0.3	4.6%	0	0.0	0.0%	0	0.0	0.0%	109
9	17	14	0.2	2.5%	4	0.0	0.7%	6	0.1	1.1%	41
10	120	49	0.5	8.6%	12	0.1	2.1%	1	0.0	0.2%	182
11	14	3	0.0	0.5%	1	0.0	0.2%	0	0.0	0.0%	18
12	11	5	0.1	0.9%	1	0.0	0.2%	0	0.0	0.0%	17
13	12	3	0.0	0.5%	1	0.0	0.2%	0	0.0	0.0%	16
14	87	1	0.0	0.2%	0	0.0	0.0%	0	0.0	0.0%	88
<b>All NMTs</b>	739	278	3	0	139	2	0	51	1	0	1207

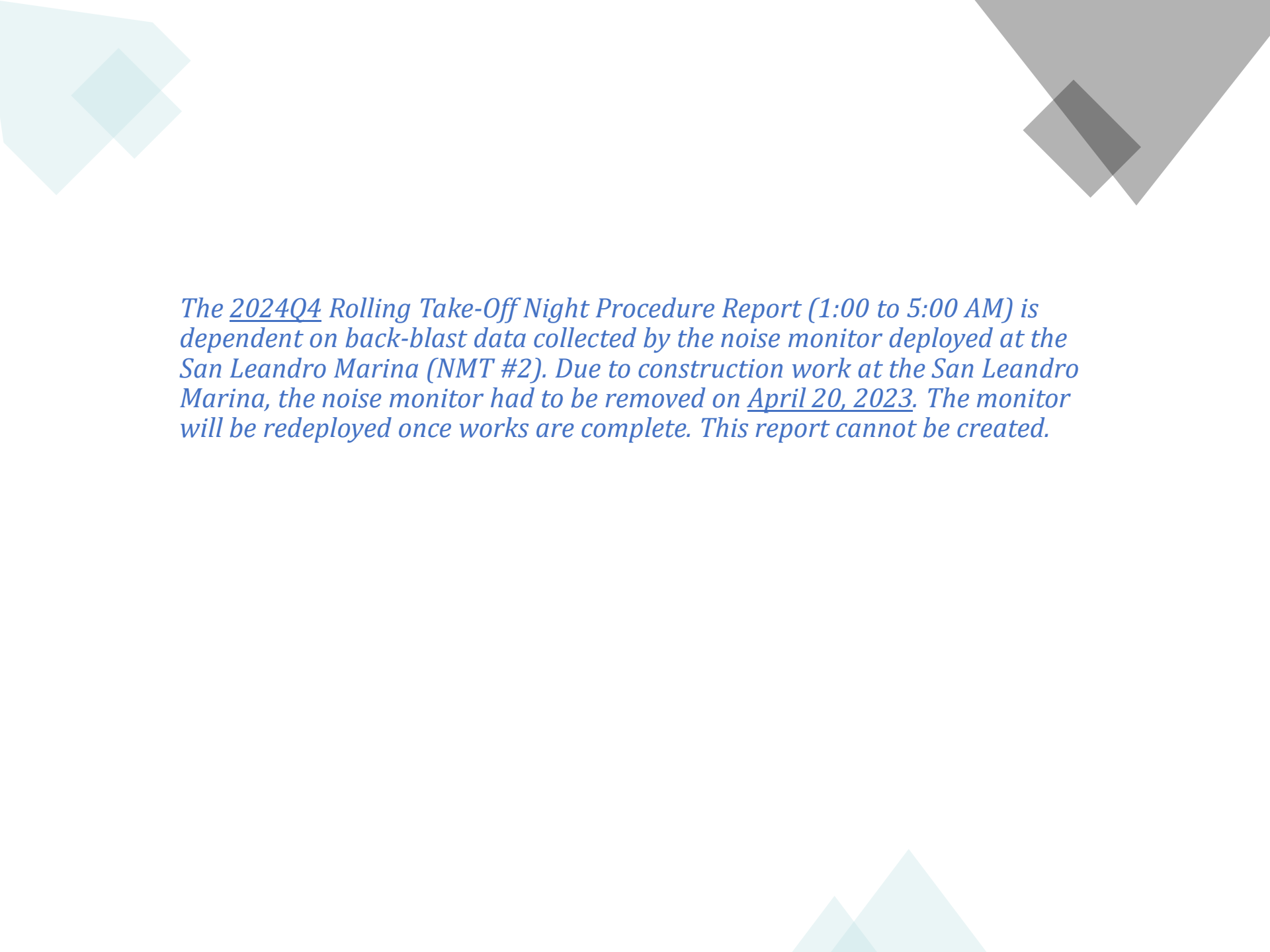
**Table 2. Aircraft SEL Noise Measurements in Alameda - Total Aircraft Departures = 271**

First Quarter 2025 (10:00 p.m. to 7:00 a.m.)											
NMT Number	Aircraft Noise Events Below SEL 80 dBA	Aircraft Noise Events SEL 80 - 84.9 dBA			Aircraft Noise Events SEL 85 - 89.9 dBA			Aircraft Noise Events SEL ≥ 90 dBA			Total Aircraft Noise Events
		Amount	Nightly Average	As Percentage of Departures	Amount	Nightly Average	As Percentage of Departures	Amount	Nightly Average	As Percentage of Departures	
3	73	5	0.1	2.1%	0	0.0	0.0%	0	0.0	0.0%	78
4	98	101	1.1	42.3%	55	0.6	23.0%	22	0.2	9.2%	276
5	159	30	0.3	12.6%	27	0.3	11.3%	16	0.2	6.7%	232
6	40	19	0.2	7.9%	24	0.3	10.0%	5	0.1	2.1%	88
7	22	21	0.2	8.8%	14	0.2	5.9%	1	0.0	0.4%	58
8	83	26	0.3	10.9%	0	0.0	0.0%	0	0.0	0.0%	109
<b>Total</b>	<b>475</b>	<b>202</b>	<b>2.2</b>		<b>120</b>	<b>1.3</b>		<b>44</b>	<b>0.5</b>		<b>841</b>

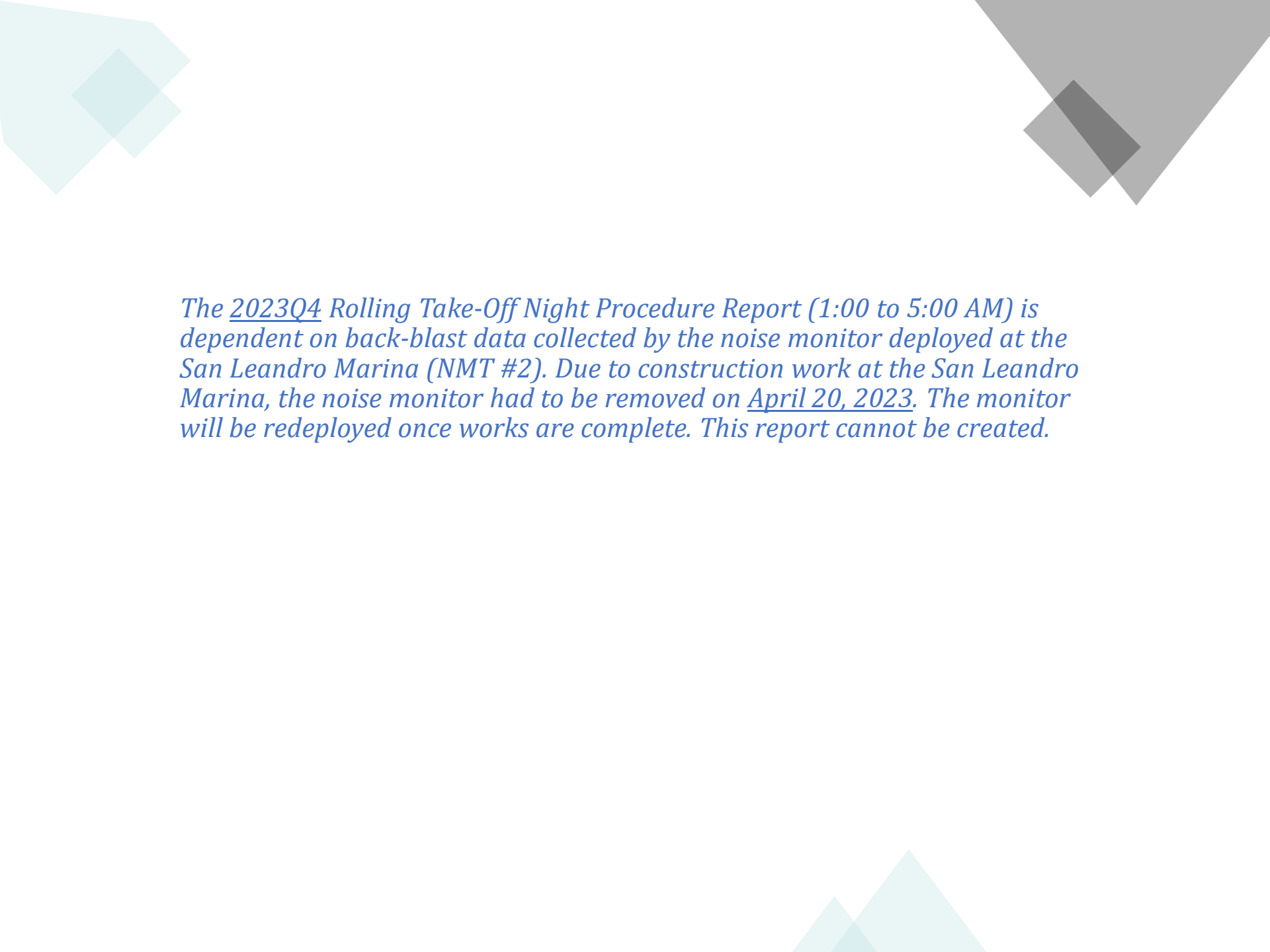
**Table 3. Aircraft SEL Noise Measurements in San Leandro - Total Aircraft Departures = 37**

First Quarter 2025 (10:00 p.m. to 7:00 a.m.)											
NMT Number	Aircraft Noise Events Below SEL 80 dBA	Aircraft Noise Events SEL 80 - 84.9 dBA			Aircraft Noise Events SEL 85 - 89.9 dBA			Aircraft Noise Events SEL ≥ 90 dBA			Total Aircraft Noise Events
		Amount	Nightly Average	As Percentage of Departures	Amount	Nightly Average	As Percentage of Departures	Amount	Nightly Average	As Percentage of Departures	
2	0	0	0.0	0.0%	0	0.0	0.0%	0	0.0	0.0%	0
9	17	14	0.2	4.3%	4	0.0	1.2%	6	0.1	1.8%	41
10	120	49	0.5	14.9%	12	0.1	3.7%	1	0.0	0.3%	182
11	14	3	0.0	0.9%	1	0.0	0.3%	0	0.0	0.0%	18
12	11	5	0.1	1.5%	1	0.0	0.3%	0	0.0	0.0%	17
13	12	3	0.0	0.9%	1	0.0	0.3%	0	0.0	0.0%	16
14	87	1	0.0	0.3%	0	0.0	0.0%	0	0.0	0.0%	88
<b>Total</b>	<b>261</b>	<b>75</b>	<b>0.8</b>		<b>19</b>	<b>0.2</b>		<b>7</b>	<b>0.1</b>		<b>362</b>





*The 2024Q4 Rolling Take-Off Night Procedure Report (1:00 to 5:00 AM) is dependent on back-blast data collected by the noise monitor deployed at the San Leandro Marina (NMT #2). Due to construction work at the San Leandro Marina, the noise monitor had to be removed on April 20, 2023. The monitor will be redeployed once works are complete. This report cannot be created.*



*The 2023Q4 Rolling Take-Off Night Procedure Report (1:00 to 5:00 AM) is dependent on back-blast data collected by the noise monitor deployed at the San Leandro Marina (NMT #2). Due to construction work at the San Leandro Marina, the noise monitor had to be removed on April 20, 2023. The monitor will be redeployed once works are complete. This report cannot be created.*



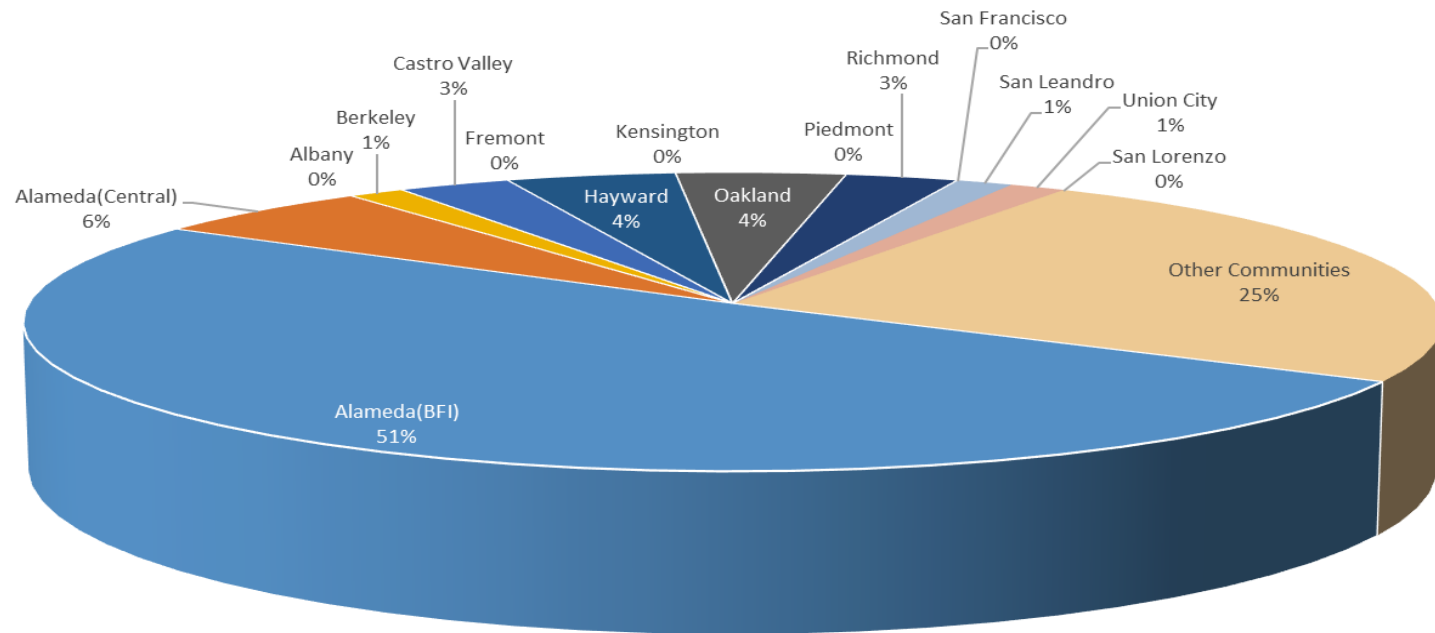
**Oakland Airport (OAK)**  
**Noise Complaint Summary**  
**January 2025**

Community	Callers	Complaints
Alameda(BFI)	35	353
Alameda(Central)	4	23
Albany	0	0
Berkeley	1	81
Castro Valley	2	24
Fremont	0	0
Hayw ard	3	4
Kensington	0	0
Oakland	3	2238
Piedmont	0	0
Richmond	2	180
San Francisco	0	0
San Leandro	1	1
Union City	1	10
San Lorenzo	0	0
Other Communities	17	63
Total	69	2977
Complaints by Type		
E-mail	2320	
View point App	657	
Complaints by Time of Day		
Day ( 0700 - 1900 )	555	
Evening ( 1900 - 2200 )	759	
Night ( 2200 - 0700 )	1663	
Complaints by Type of Operation		
Arrivals	2218	
Departures	662	
Over-flights	48	
Touch & Go	49	
Not Linked to an Operation	0	
Complaints by Type of Aircraft		
Business Jet	124	
Helicopter	47	
Jet	2677	
Military	0	
Not Reported (not linked to an aircraft)	0	
Other (Type information not available)	11	
Propeller	84	
Turbo-prop	34	

# Number of Callers

## January 2025

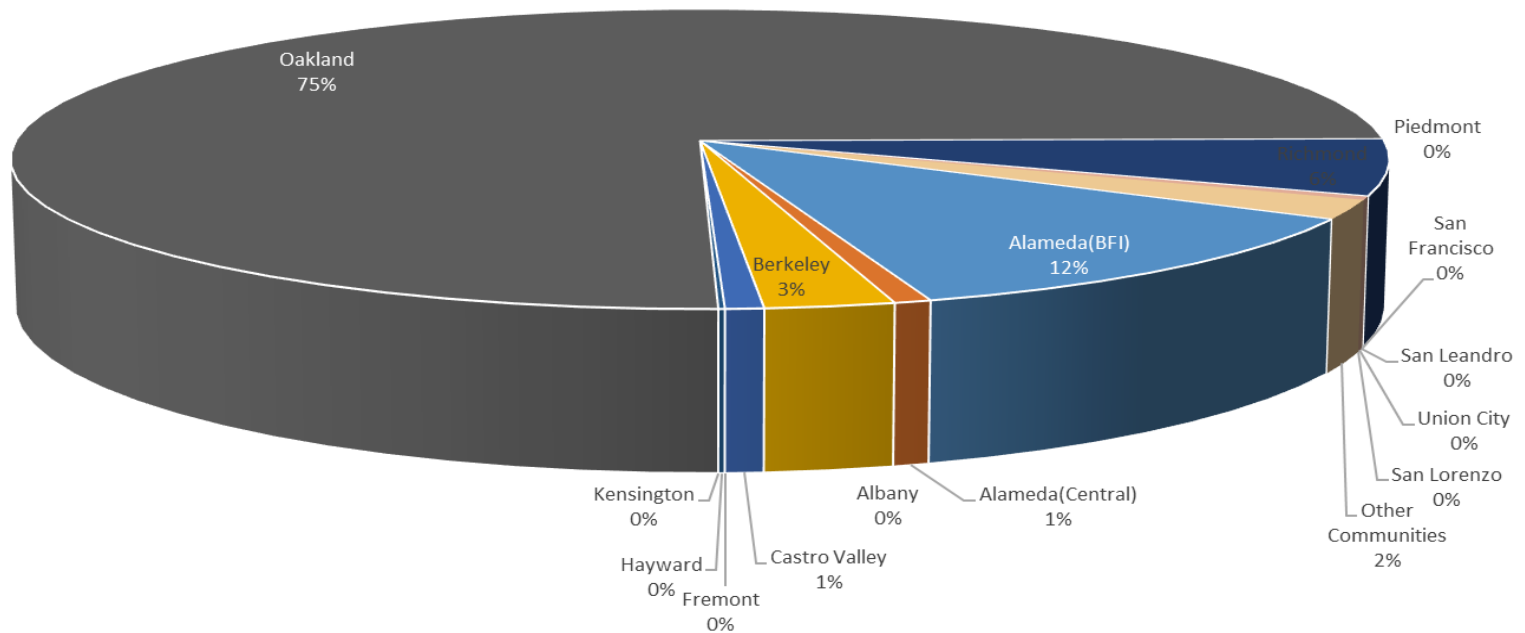
### Noise Complaints Summary by Number of Callers





# Number of Complaints January 2025

## Noise Complaints Summary by Number of Complaints



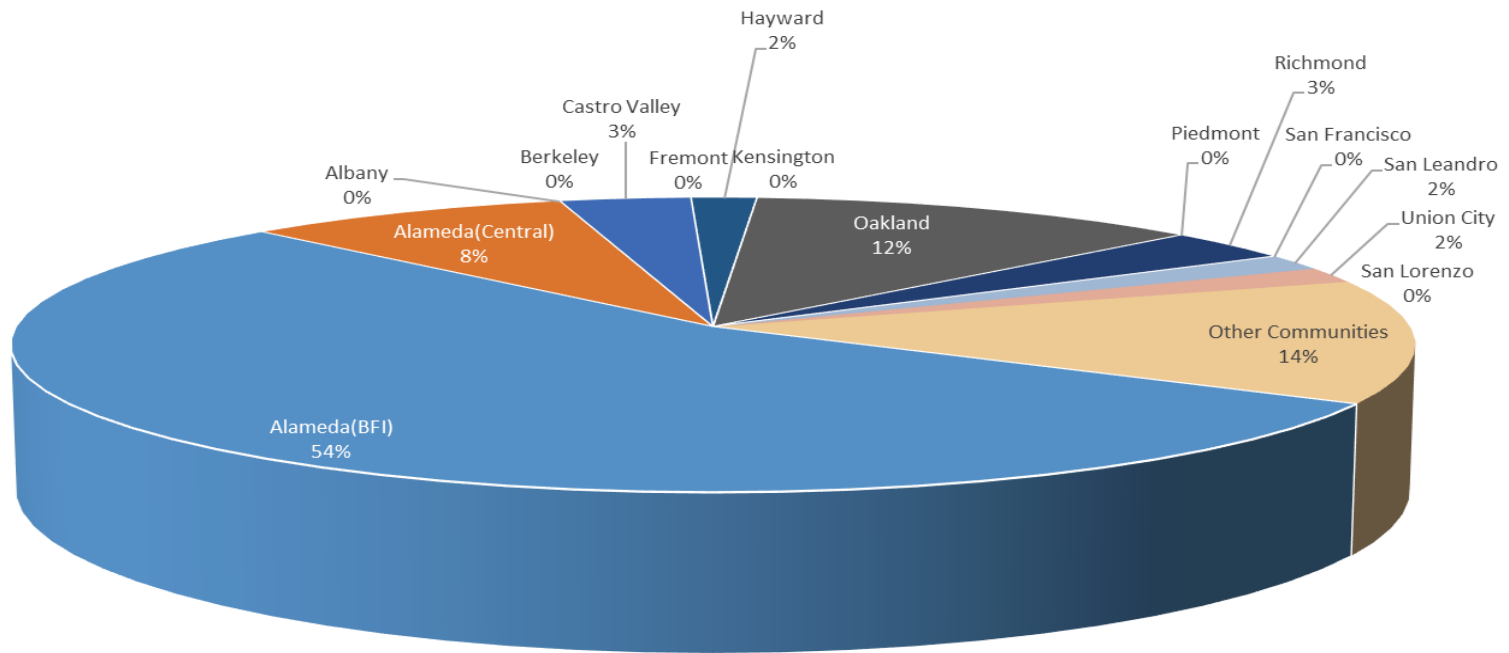
**Oakland Airport (OAK)**  
**Noise Complaint Summary**  
**February 2025**

Community	Callers	Complaints
Alameda(BFI)	32	317
Alameda(Central)	5	12
Albany	0	0
Berkeley	0	0
Castro Valley	2	38
Fremont	0	0
Hayw ard	1	1
Kensington	0	0
Oakland	7	2130
Piedmont	0	0
Richmond	2	203
San Francisco	0	0
San Leandro	1	58
Union City	1	5
San Lorenzo	0	0
Other Communities	8	41
Total	59	2805
Complaints by Type		
E-mail	2226	
View point App	566	
Complaints by Time of Day		
Day ( 0700 - 1900 )	328	
Evening ( 1900 - 2200 )	545	
Night ( 2200 - 0700 )	1932	
Complaints by Type of Operation		
Arrivals	2019	
Departures	721	
Over-flights	33	
Touch & Go	32	
Not Linked to an Operation	0	
Complaints by Type of Aircraft		
Business Jet	229	
Helicopter	10	
Jet	2368	
Military	0	
Not Reported (not linked to an aircraft)	0	
Other (Type information not available)	4	
Propeller	71	
Turbo-prop	123	

# Number of Callers

## February 2025

### Noise Complaints Summary by Number of Callers

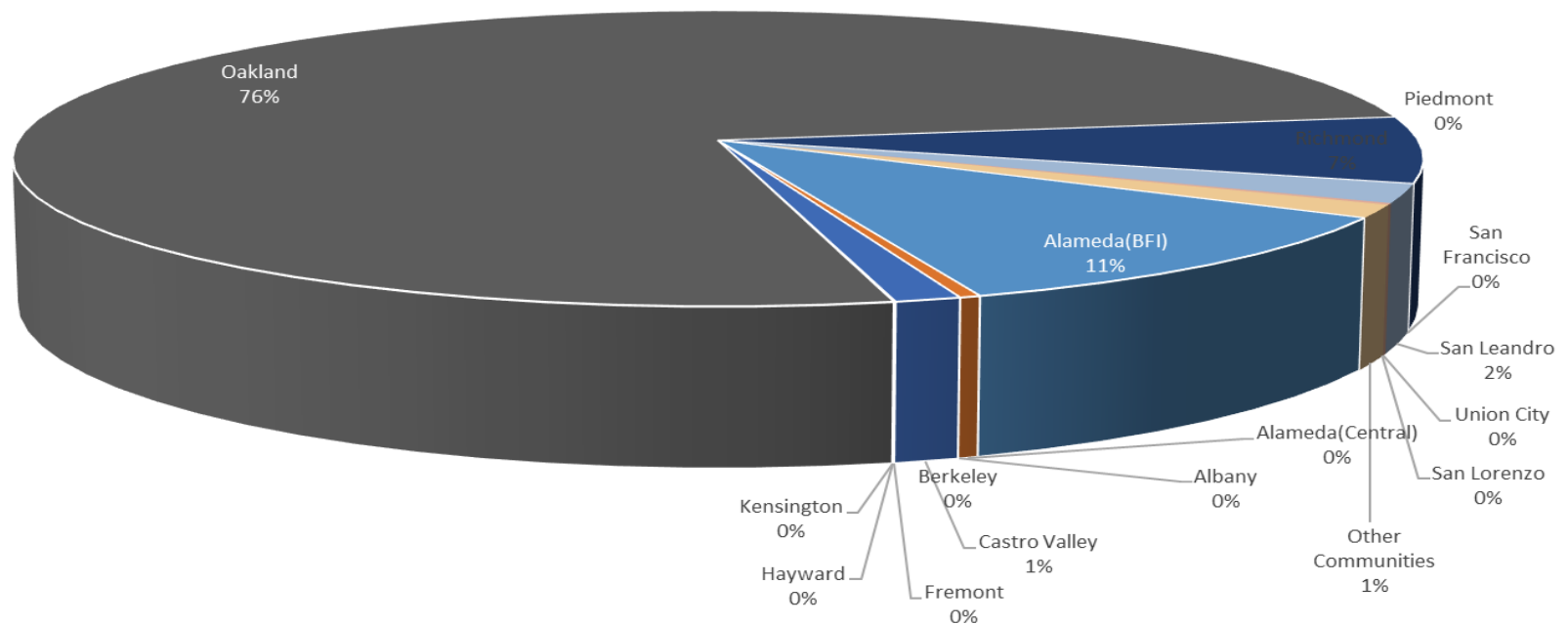




# Number of Complaints

## February 2025

### Noise Complaints Summary by Number of Complaints



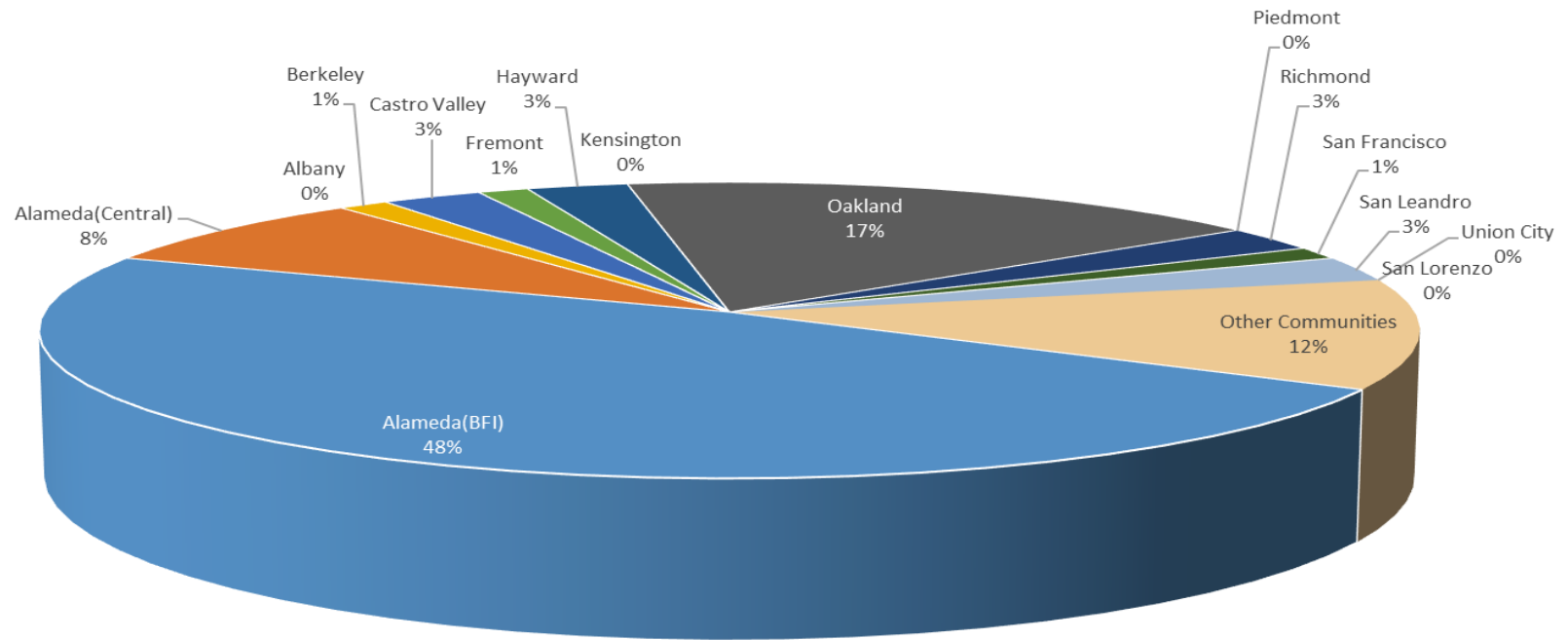
**Oakland Airport (OAK)**  
**Noise Complaint Summary**  
**March 2025**

Community	Callers	Complaints
Alameda(BFI)	36	618
Alameda(Central)	6	12
Albany	0	0
Berkeley	1	2
Castro Valley	2	93
Fremont	1	12
Hayw ard	2	4
Kensington	0	0
Oakland	13	2722
Piedmont	0	0
Richmond	2	240
San Francisco	1	2
San Leandro	2	27
Union City	0	0
San Lorenzo	0	0
Other Communities	9	56
Total	75	3788
Complaints by Type		
E-mail	2791	
View point App	997	
Complaints by Time of Day		
Day ( 0700 - 1900 )	465	
Evening ( 1900 - 2200 )	883	
Night ( 2200 - 0700 )	2440	
Complaints by Type of Operation		
Arrivals	1937	
Departures	1718	
Over-flights	84	
Touch & Go	49	
Not Linked to an Operation	0	
Complaints by Type of Aircraft		
Business Jet	173	
Helicopter	20	
Jet	3287	
Military	0	
Not Reported (not linked to an aircraft)	0	
Other (Type information not available)	83	
Propeller	148	
Turbo-prop	77	

# Number of Callers

## March 2025

Noise Complaints Summary by Number of Callers

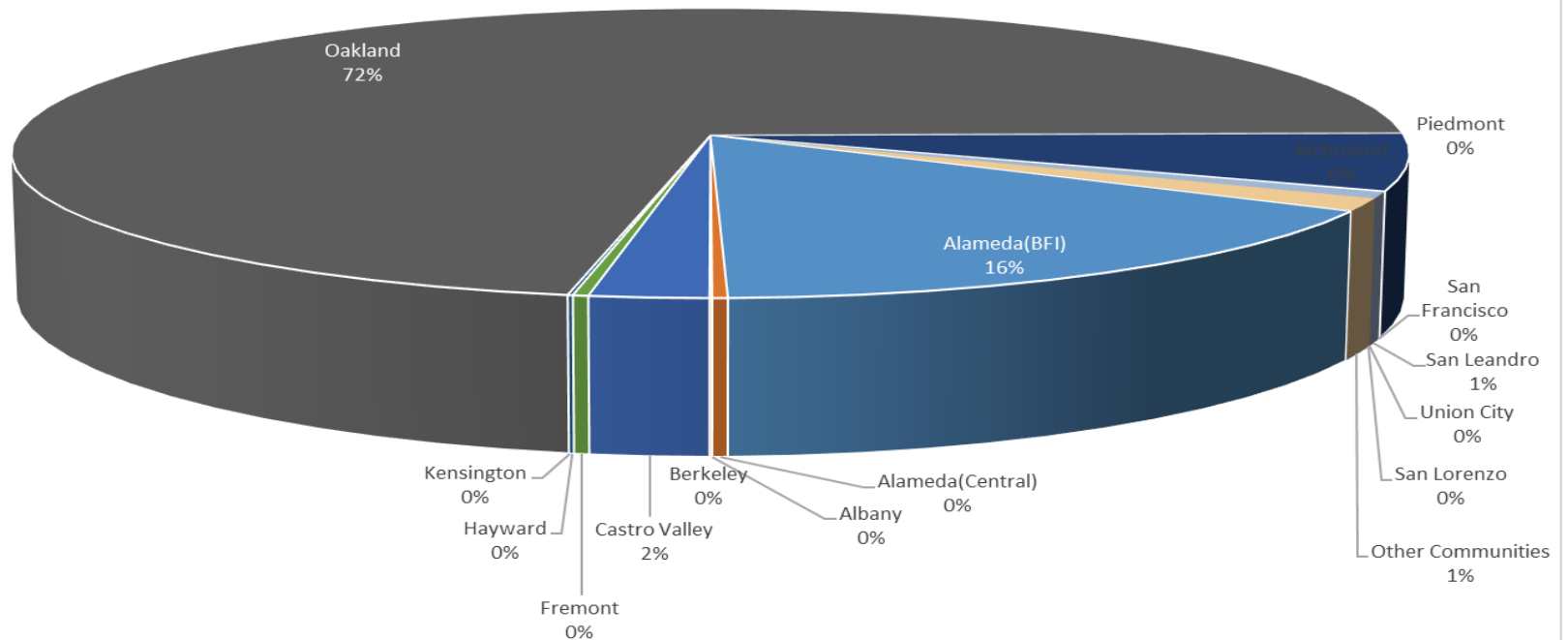


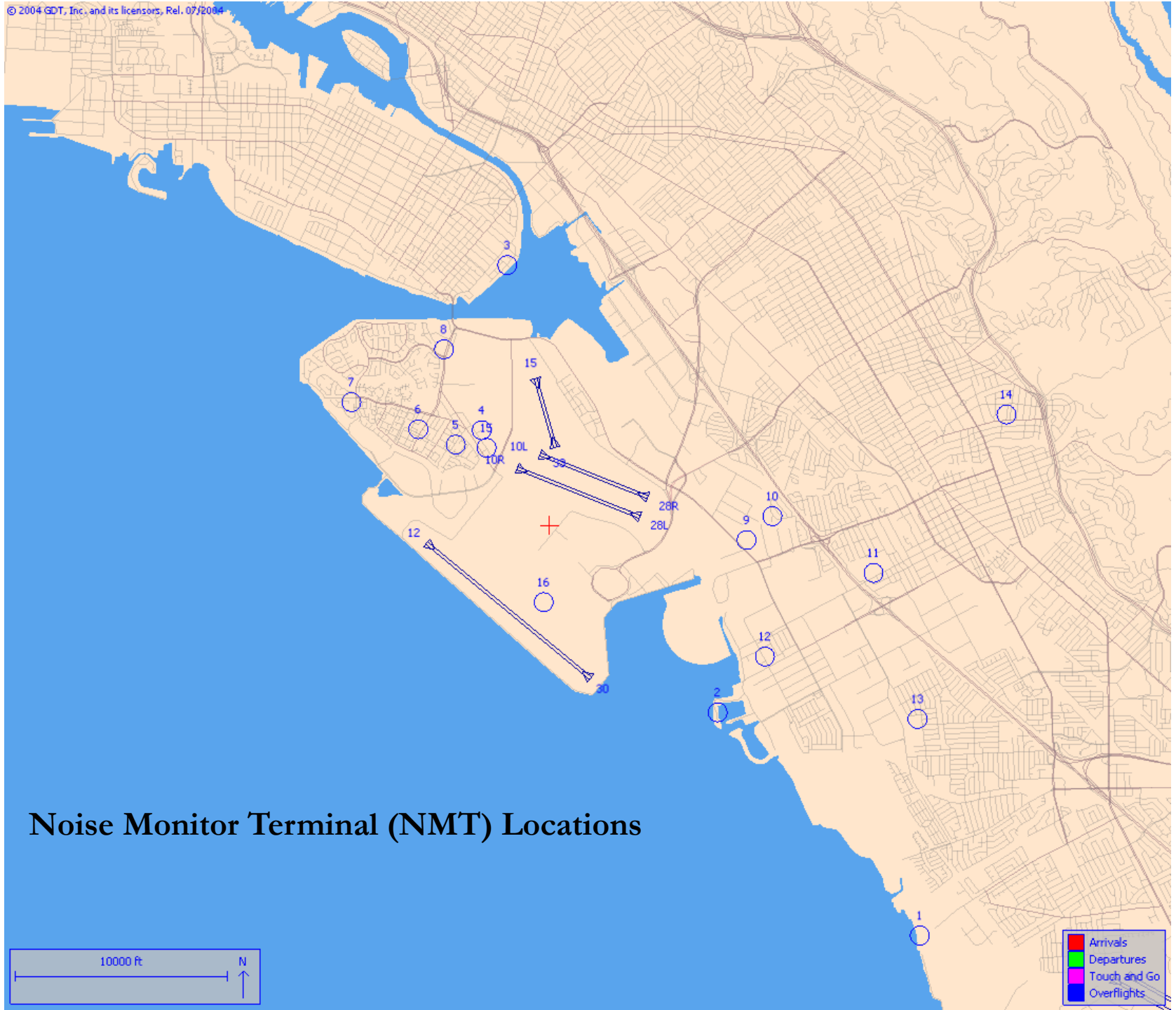


# Number of Complaints

## March 2025

### Noise Complaints Summary by Number of Complaints





## Noise Monitor Terminal (NMT) Locations