

NOISE FORUM SUMMARY

North/South Field Working Groups



NOISE ABATEMENT REPORT

SECOND QUARTER 2025

Disclaimer

The Port of Oakland's Airport Noise and Operations Monitoring System (ANOMS) is the source of the data used in this report. Although ANOMS is a very sophisticated computer program that provides a state-of-the-art solution for collecting aircraft noise complaints. The number of aircraft noise complaints in the report are for informational purposes. Airport staff carefully reviews the data for accuracy and will make corrections whenever possible.

+
•
0

Compliance Monitoring Quarterly Summary Comparison Second Quarter 2025				
	2024Q2		2025Q2	
	Compl.	N/C	Compl.	N/C
Runway 28R/L Jet Departure Compliance	93%	7%	92%	8%
Total Airport-wide Corporate Jet Departures	2,474	180	2,021	185
Runway 10R/L Jet Landing Compliance	88%	12%	100%	0%
Total Southeast Plan Corporate Jet Landings	83	11	0	0
North Field VFR Departure Compliance	97%	3%	96%	5%
Total Runways 28R/L & 33 Departures	309	10	1,477	59
North Field Quiet Hours Compliance	90%	10%	87%	13%
Total North Field Quiet Hours Departures	233	27	312	46
Runway 30 BFI Right Turn Departure Compliance	100%	0%	100%	0%
Total Runway 30 Turbojet Departures	15,693	6	15,181	6
Night Time Departure Compliance	99%	1%	99%	1%
Total Runway 30 Night Turbojet Departures	3,266	35	3,184	23
Runway 12 Night Departure Compliance	98%	2%	100%	0%
Total Runway 12 Night Turbojet Departures	134	3	8	0
Runway 30 East Turn Departure Compliance	100%	0%	100%	0%
Total Runway 30 East Turn Departures	3,939	0	3,330	7
100 Degree Radial Turbojet Landing Compliance	99%	1%	98%	2%
Total 100 Degree Radial Turbojet Landings	835	5	607	10
Engine Runup Program Compliance	100%	0%	100%	0%
Total Evening and Nighttime Engine Runups	5	0	7	0
Note: N/C means non-compliant. Percentage values are rounded out.				

Operation Details
Beacon Code: 3373
AC Type: H25C
Operation Type: Departure
Runway: 28L
Date/Time: 12/13/2016 8:26:14 AM

© 2004 GDT, Inc. and its licensors, Rel. 07/2004
© MapBox © OpenStreetMap

Runway 28R/L Jet Departure NAP

2025Q2

92% Compliance
(2,206 total departures)
(185 non-compliant)

2024Q2

93% Compliance
(2,472 total departures)
(180 non-compliant)

Heading: 325
Elevation: 15

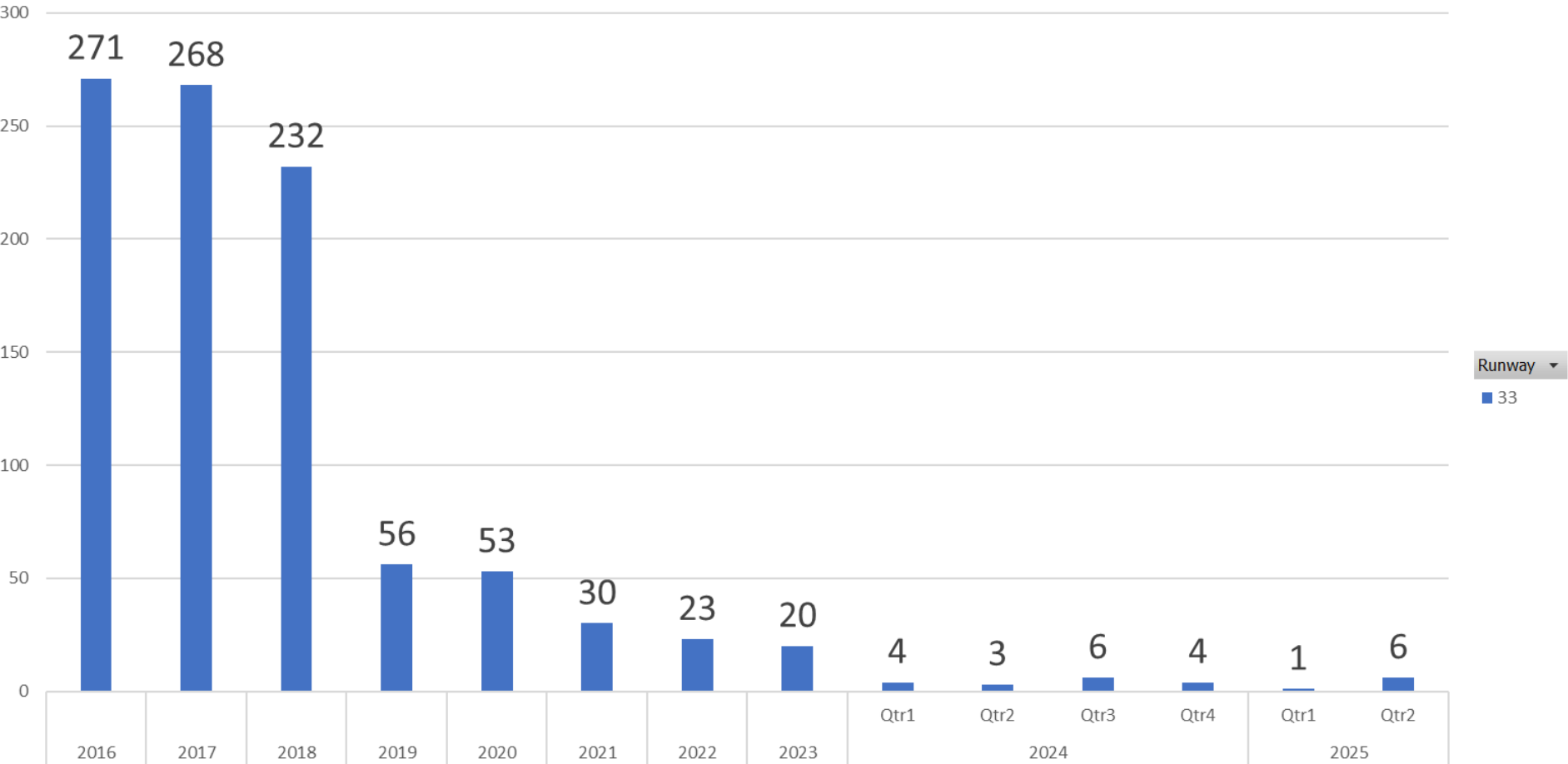
Arrivals
Departures
Touch and Go
Overflights

RUNWAY 33 JET DEPARTURES

Second Quarter 2025

Count of Aircraft Type

Runway 33 Jet Departure Trend Analysis



Years ▾ Quarters ▾ Date Time ▾

+ -

Operation Details
Beacon Code: 4564
AC Type: C550
Operation Type: Arrival
Runway: 10R
Date/Time: 12/15/2016 8:15:42 PM

© 2004 CDL, Inc. and its licensors, Rel. 07/2004
© MapBox © OpenStreetMap

Runway 10R/L Jet Landing NAP

2025Q2

100% Compliance
(0 total landings)
(0 non-compliant)

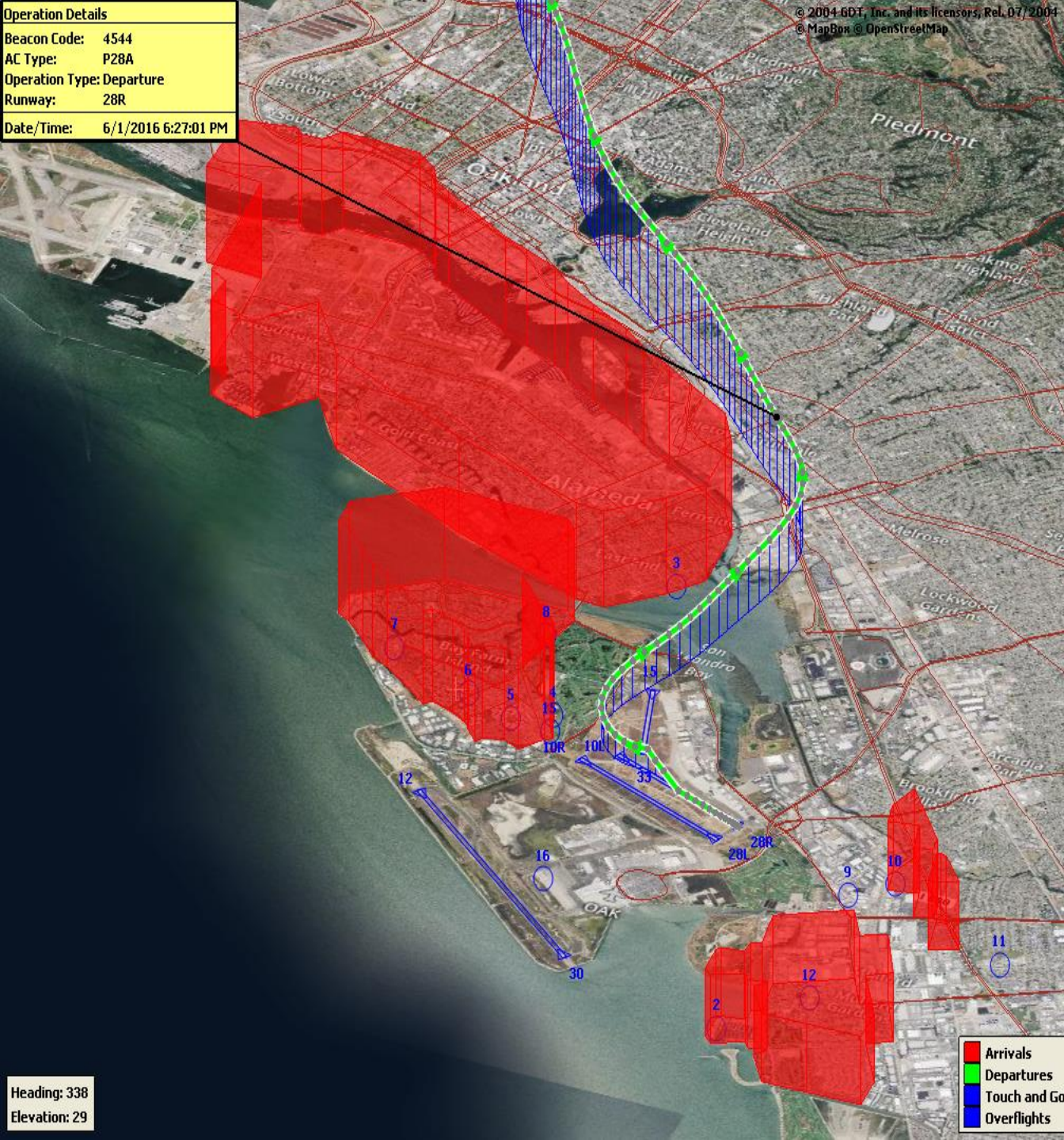
2024Q2

88% Compliance
(94 total landings)
(11 non-compliant)

Heading: 325
Elevation: 15

Arrivals
Departures
Touch and Go
Overflights

Operation Details	
Beacon Code:	4544
AC Type:	P28A
Operation Type:	Departure
Runway:	28R
Date/Time:	6/1/2016 6:27:01 PM

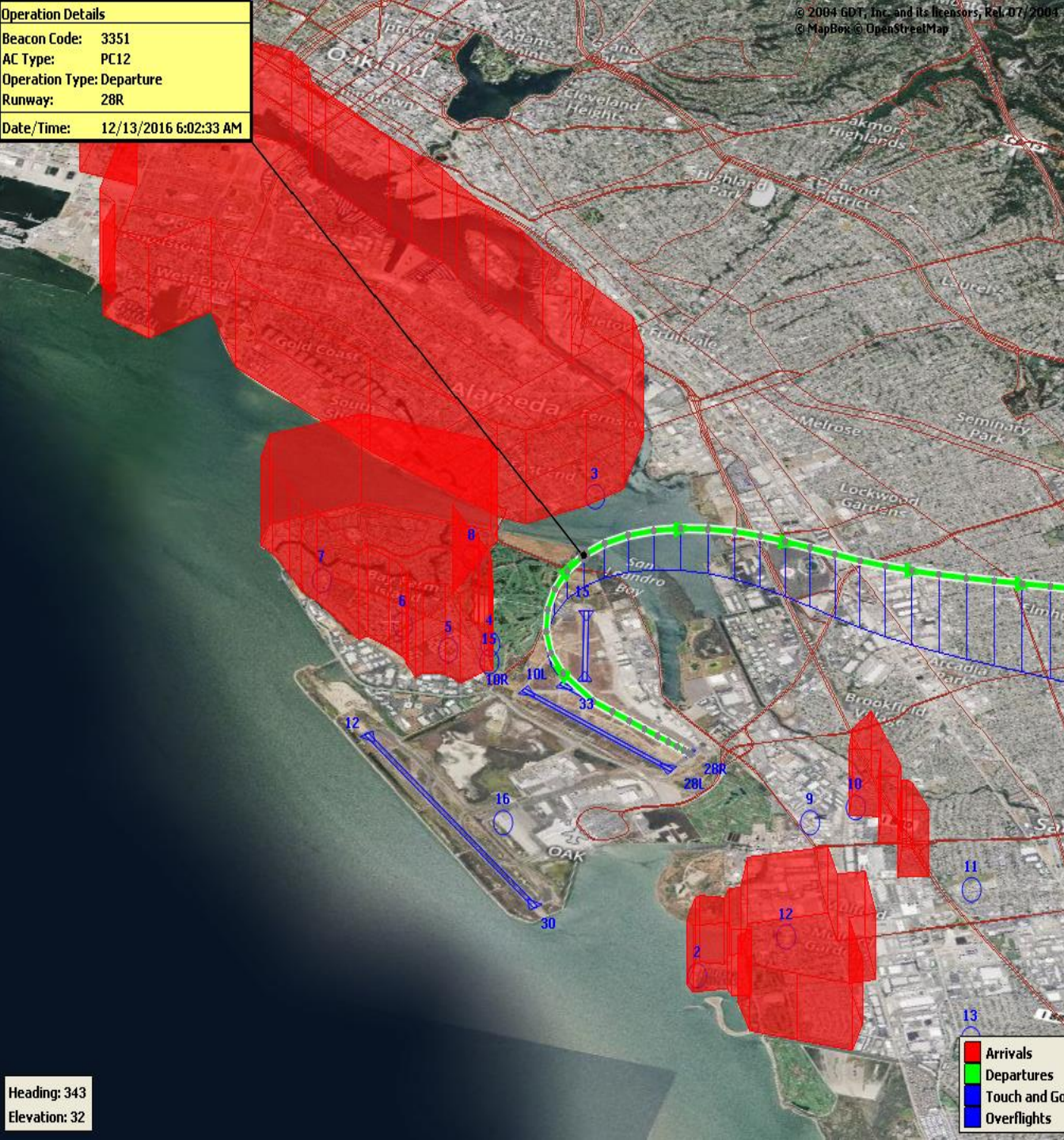


VFR Aircraft Departure NAP

2025Q2
96% Compliance
(1,536 total departures)
(59 non-compliant)

2024Q2
97% Compliance
(319 total departures)
(10 non-compliant)

Operation Details
Beacon Code: 3351
AC Type: PC12
Operation Type: Departure
Runway: 28R
Date/Time: 12/13/2016 6:02:33 AM



North Field Quiet Hours NAP

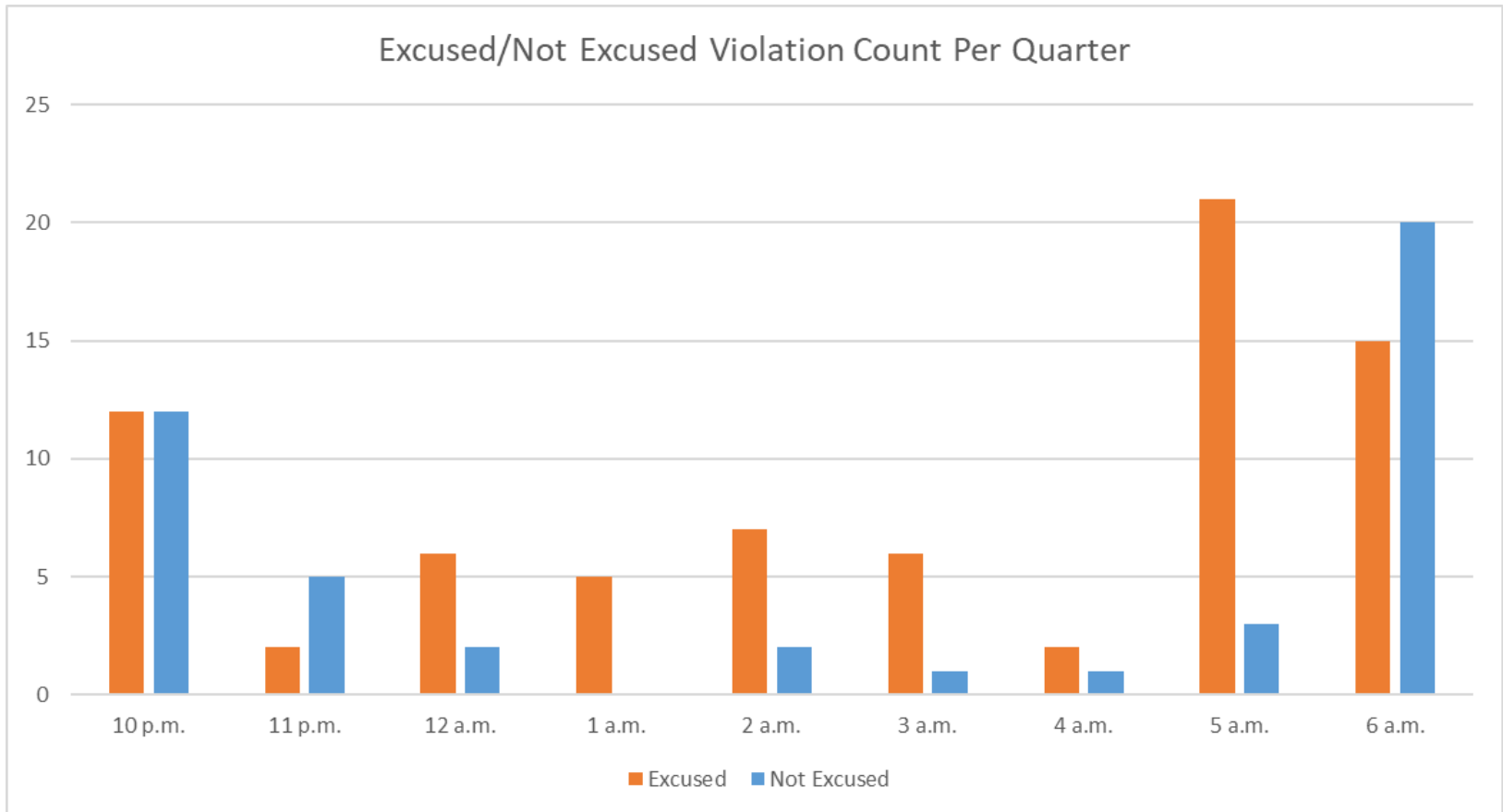
2025Q2
87% Compliance
(358 total departures)
(46 non-compliant)

2024Q2
90% Compliance
(260 total departures)
(27 non-compliant)

Heading: 343
Elevation: 32

- Arrivals
- Departures
- Touch and Go
- Overflights

Quarterly North Field Quiet Hours NAP Non-Compliant Per Quarter



Operation Details
 Beacon Code: 3641
 AC Type: B737
 Operation Type: Departure
 Runway: 30
 Date/Time: 8/22/2017 10:16:59 PM



Night Time Departure NAP

2025Q2

99% Compliance
(3,207 total departures)
(23 non-compliant)

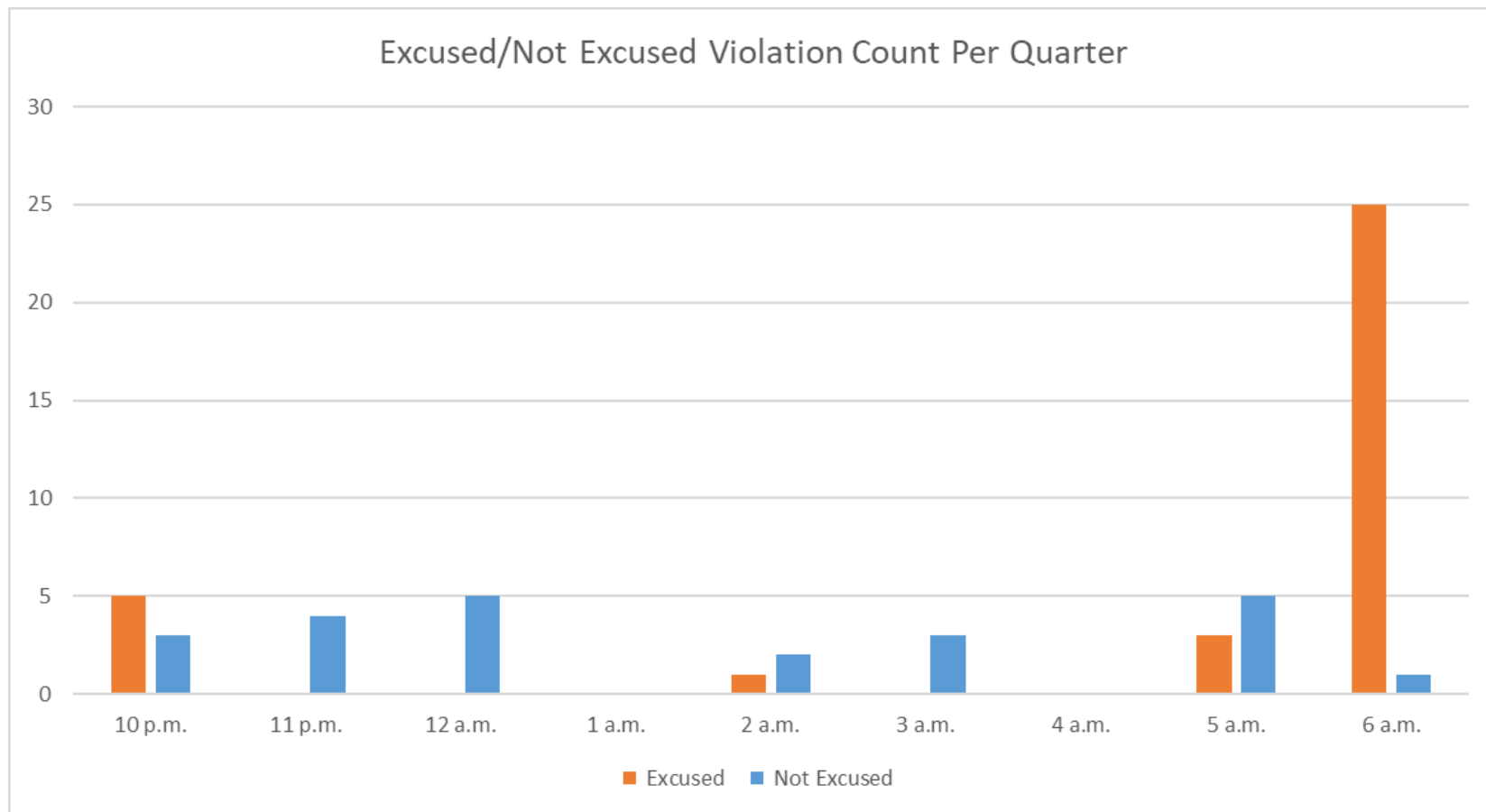
*REBAS Gate non-compliant = 22

2024Q2

99% Compliance
(3,301 total departures)
(35 non-compliant)

Heading: 349
 Elevation: 59

Quarterly Night Time NAP Non-Compliant Count Per Quarter



Operation Details
Beacon Code: 3345
AC Type: B763
Operation Type: Departure
Runway: 12
Date/Time: 12/15/2016 3:12:56 AM

Heading: 1
Elevation: 38



Runway 12 Night Departure NAP

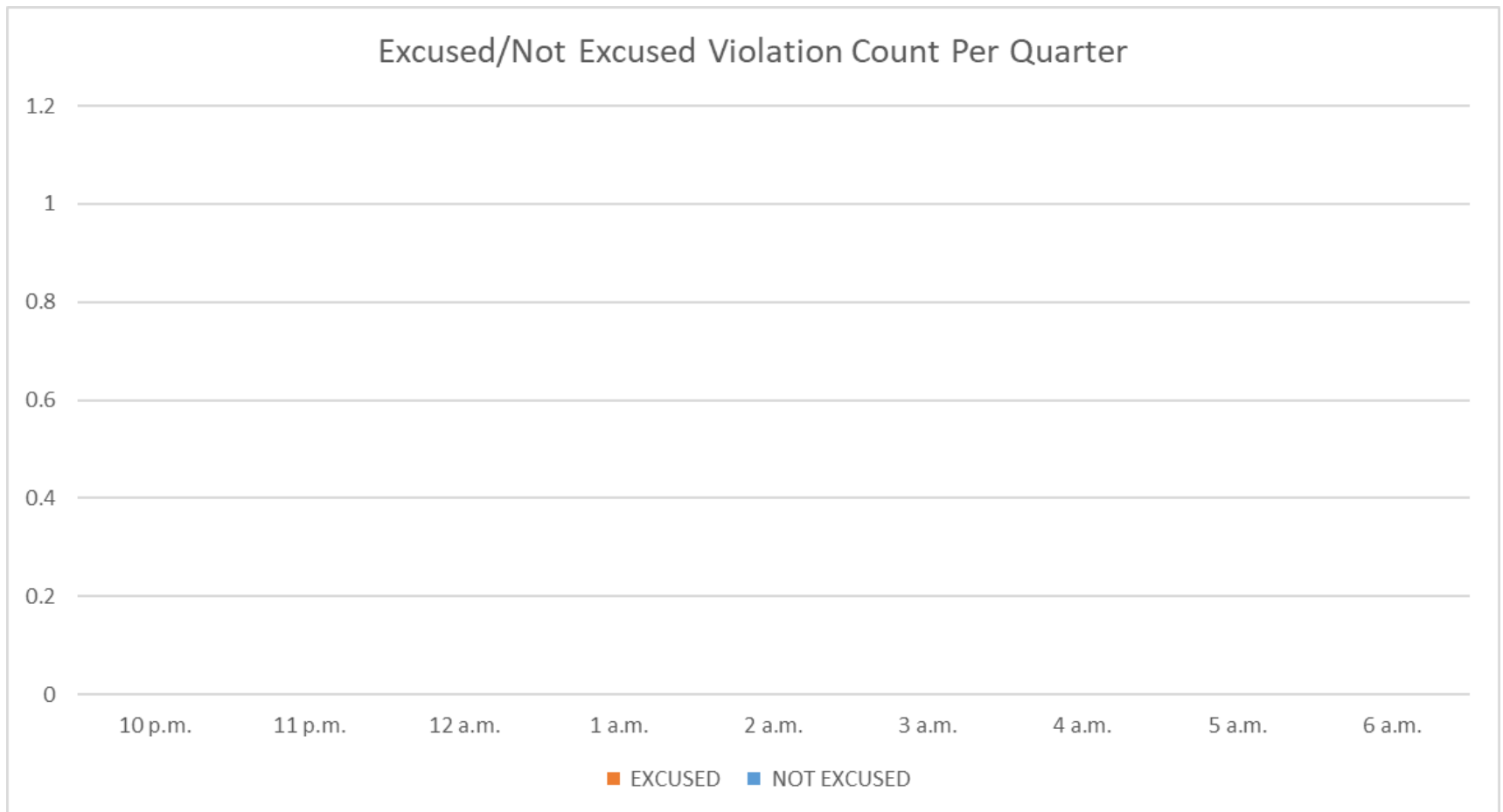
2025Q2

**100% Compliance
(8 total departures)
(0 non-compliant)**

2024Q2

**98% Compliance
(137 total departures)
(3 non-compliant)**

Quartely Runway 12 Night Departure Non-Compliant Count Per Quarter



Operation Details	
Beacon Code:	3374
AC Type:	B737
Operation Type:	Departure
Runway:	30
Date/Time:	1/7/2019 8:57:05 AM

© 2004 GDT, Inc. and its licensors, Rel. 07/2004
© MapBox © OpenStreetMap

Runway 30 Bay Farm Right Turn NAP

2025Q2
100% Compliance
(15,187 total departures)
(6 non-compliant)

2024Q2
100% Compliance
(15,699 total departures)
(6 non-compliant)

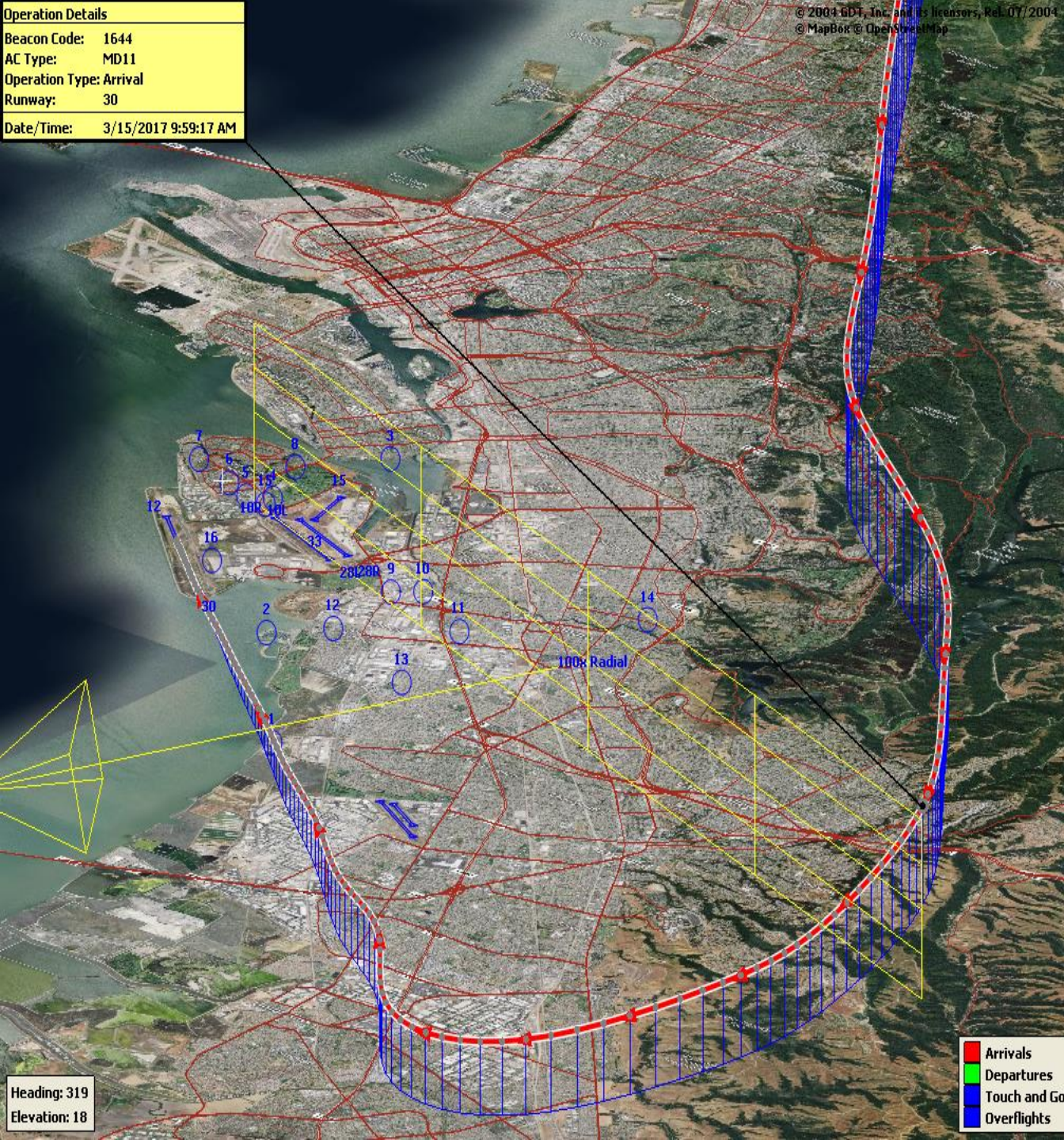
Heading: 299
Elevation: 36



Arrivals
Departures
Touch and Go
Overflights

Operation Details	
Beacon Code:	1644
AC Type:	MD11
Operation Type:	Arrival
Runway:	30
Date/Time:	3/15/2017 9:59:17 AM

© 2004 GDT, Inc. and its licensors, Rel. 07/2004
© MapBox © OpenStreetMap



100 Degree Radial At 3,000 ft. NAP

2025Q2

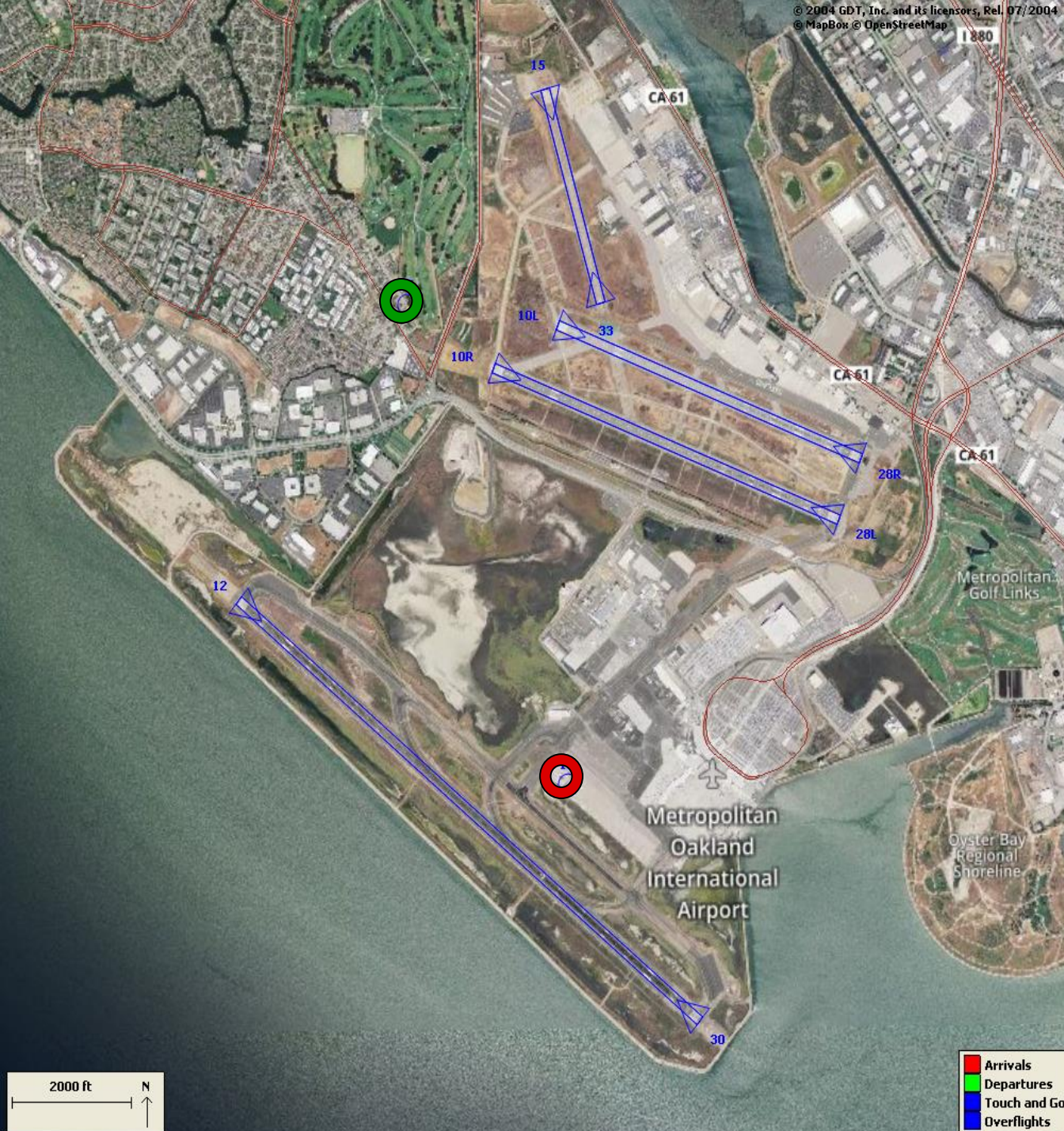
98% Compliance
(617 total landings)
(10 non-compliant)

2024Q2

99% Compliance
(840 total landings)
(5 non-compliant)

- Arrivals
- Departures
- Touch and Go
- Overflights

Heading: 319
Elevation: 18



Engine Run-up NAP

2025Q2

**100% Compliance
(7 engine run-ups)*
(0 non-compliant)**

2024Q2

**100% Compliance
(5 engine run-ups)
(0 non-compliant)**

***Only above idle-power run-ups
recorded.**

Compliance Monitoring Quarterly Summary Comparison Second Quarter 2025 - Quarter-to-Quarter				
	2025Q1		2025Q2	
	Compl.	N/C	Compl.	N/C
Runway 28R/L Jet Departure Compliance	93%	7%	92%	8%
Total Airport-wide Corporate Jet Departures	2,321	169	2,021	185
Runway 10R/L Jet Landing Compliance	89%	11%	100%	0%
Total Southeast Plan Corporate Jet Landings	321	39	0	0
North Field VFR Departure Compliance	96%	4%	96%	5%
Total Runways 28R/L & 33 Departures	1,263	54	1,477	59
North Field Quiet Hours Compliance	81%	19%	87%	13%
Total North Field Quiet Hours Departures	248	60	312	46
Runway 30 BFI Right Turn Departure Compliance	100%	0%	100%	0%
Total Runway 30 Turbojet Departures	13,048	3	15,181	6
Night Time Departure Compliance	99%	1%	99%	1%
Total Runway 30 Night Turbojet Departures	2,534	13	3,184	23
Runway 12 Night Departure Compliance	97%	3%	100%	0%
Total Runway 12 Night Turbojet Departures	265	9	8	0
Runway 30 East Turn Departure Compliance	100%	0%	100%	0%
Total Runway 30 East Turn Departures	3,009	4	3,330	7
100 Degree Radial Turbojet Landing Compliance	99%	1%	98%	2%
Total 100 Degree Radial Turbojet Landings	594	4	607	10
Engine Runup Program Compliance	100%	0%	100%	0%
Total Evening and Nighttime Engine Runups	1	0	7	0
Note: N/C means non-compliant. Percentage values are rounded out.				

Table 1. North Field Night Aircraft Departure SEL Noise Measurements
Total Aircraft Departures = 358

Second Quarter 2025 (10:00 p.m. to 7:00 a.m.)

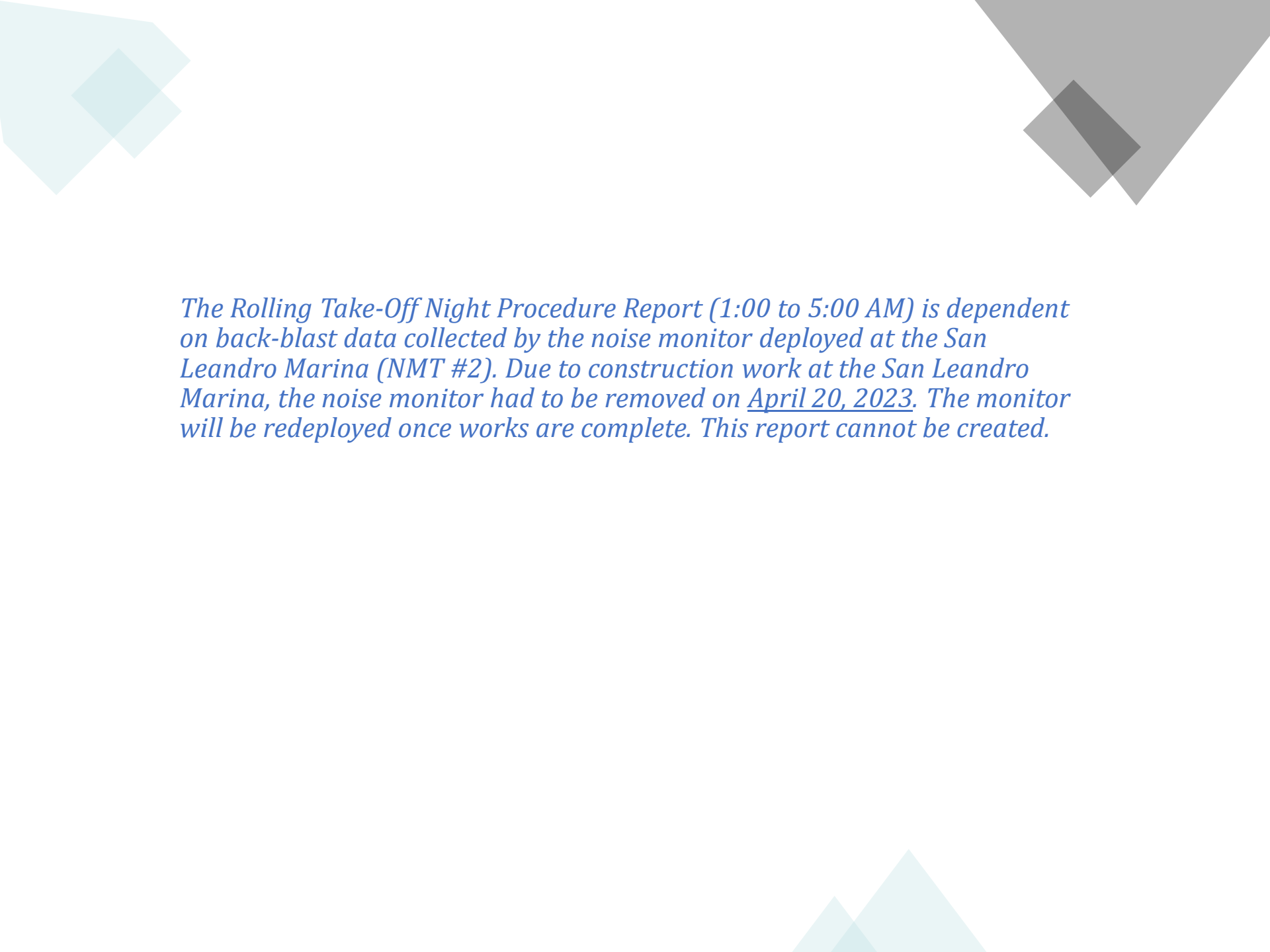
NMT Number	Aircraft Noise Events Below SEL 80 dBA	Aircraft Noise Events SEL 80 - 84.9 dBA			Aircraft Noise Events SEL 85 - 89.9 dBA			Aircraft Noise Events SEL ≥ 90 dBA			Total Aircraft Noise Events
		Amount	Nightly Average	As Percentage of Departures	Amount	Nightly Average	As Percentage of Departures	Amount	Nightly Average	As Percentage of Departures	
1	0	0	0.0	0.0%	0	0.0	0.0%	0	0.0	0.0%	0
2	0	0	0.0	0.0%	0	0.0	0.0%	0	0.0	0.0%	0
3	60	6	0.1	1.1%	0	0.0	0.0%	0	0.0	0.0%	66
4	157	111	1.2	19.6%	42	0.5	7.4%	23	0.3	4.1%	333
5	172	41	0.5	7.2%	18	0.2	3.2%	23	0.3	4.1%	254
6	45	14	0.2	2.5%	17	0.2	3.0%	16	0.2	2.8%	92
7	25	15	0.2	2.6%	17	0.2	3.0%	4	0.0	0.7%	61
8	65	31	0.3	5.5%	3	0.0	0.5%	0	0.0	0.0%	99
9	2	1	0.0	0.2%	2	0.0	0.4%	0	0.0	0.0%	5
10	61	9	0.1	1.6%	4	0.0	0.7%	1	0.0	0.2%	75
11	3	0	0.0	0.0%	0	0.0	0.0%	0	0.0	0.0%	3
12	1	0	0.0	0.0%	1	0.0	0.2%	0	0.0	0.0%	2
13	3	0	0.0	0.0%	0	0.0	0.0%	0	0.0	0.0%	3
14	89	0	0.0	0.0%	0	0.0	0.0%	0	0.0	0.0%	89
All NMTs	683	228	3	0	104	1	0	67	1	0	1082

Table 2. Aircraft SEL Noise Measurements in Alameda - Total Aircraft Departures = 350

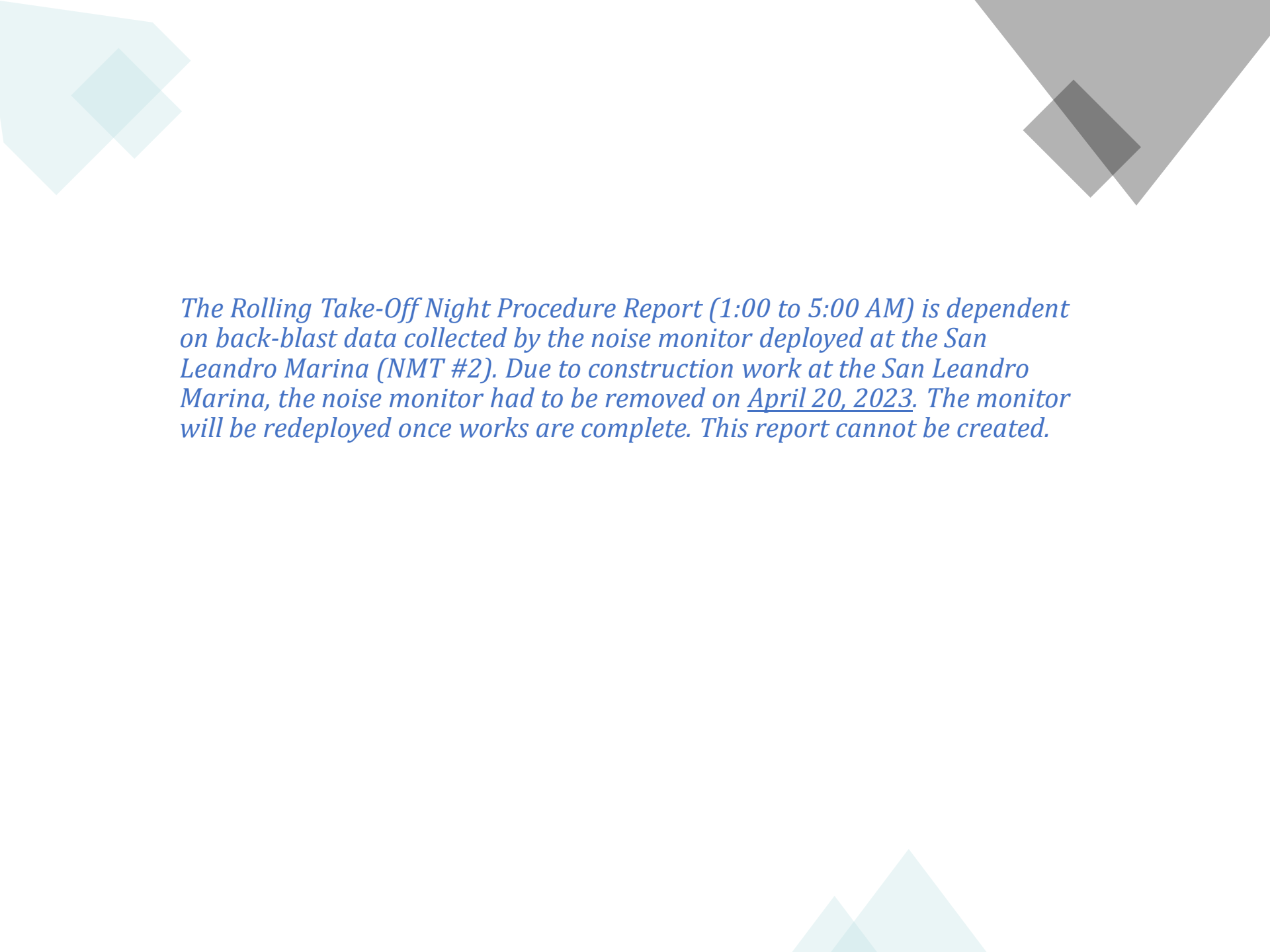
Second Quarter 2025 (10:00 p.m. to 7:00 a.m.)											
NMT Number	Aircraft Noise Events Below SEL 80 dBA	Aircraft Noise Events SEL 80 - 84.9 dBA			Aircraft Noise Events SEL 85 - 89.9 dBA			Aircraft Noise Events SEL ≥ 90 dBA			Total Aircraft Noise Events
		Amount	Nightly Average	As Percentage of Departures	Amount	Nightly Average	As Percentage of Departures	Amount	Nightly Average	As Percentage of Departures	
3	60	6	0.1	2.5%	0	0.0	0.0%	0	0.0	0.0%	66
4	157	111	1.2	46.4%	42	0.5	17.6%	23	0.3	9.6%	333
5	172	41	0.5	17.2%	18	0.2	7.5%	23	0.3	9.6%	254
6	45	14	0.2	5.9%	17	0.2	7.1%	16	0.2	6.7%	92
7	25	15	0.2	6.3%	17	0.2	7.1%	4	0.0	1.7%	61
8	65	31	0.3	13.0%	3	0.0	1.3%	0	0.0	0.0%	99
Total	524	218	2.4		97	1.1		66	0.7		905

Table 3. Aircraft SEL Noise Measurements in San Leandro - Total Aircraft Departures = 8

Second Quarter 2025 (10:00 p.m. to 7:00 a.m.)											
NMT Number	Aircraft Noise Events Below SEL 80 dBA	Aircraft Noise Events SEL 80 - 84.9 dBA			Aircraft Noise Events SEL 85 - 89.9 dBA			Aircraft Noise Events SEL ≥ 90 dBA			Total Aircraft Noise Events
		Amount	Nightly Average	As Percentage of Departures	Amount	Nightly Average	As Percentage of Departures	Amount	Nightly Average	As Percentage of Departures	
2	0	0	0.0	0.0%	0	0.0	0.0%	0	0.0	0.0%	0
9	2	1	0.0	0.3%	2	0.0	0.6%	0	0.0	0.0%	5
10	61	9	0.1	2.7%	4	0.0	1.2%	1	0.0	0.3%	75
11	3	0	0.0	0.0%	0	0.0	0.0%	0	0.0	0.0%	3
12	1	0	0.0	0.0%	1	0.0	0.3%	0	0.0	0.0%	2
13	3	0	0.0	0.0%	0	0.0	0.0%	0	0.0	0.0%	3
14	89	0	0.0	0.0%	0	0.0	0.0%	0	0.0	0.0%	89
Total	159	10	0.1		7	0.1		1	0.0		177



The Rolling Take-Off Night Procedure Report (1:00 to 5:00 AM) is dependent on back-blast data collected by the noise monitor deployed at the San Leandro Marina (NMT #2). Due to construction work at the San Leandro Marina, the noise monitor had to be removed on April 20, 2023. The monitor will be redeployed once works are complete. This report cannot be created.



The Rolling Take-Off Night Procedure Report (1:00 to 5:00 AM) is dependent on back-blast data collected by the noise monitor deployed at the San Leandro Marina (NMT #2). Due to construction work at the San Leandro Marina, the noise monitor had to be removed on April 20, 2023. The monitor will be redeployed once works are complete. This report cannot be created.

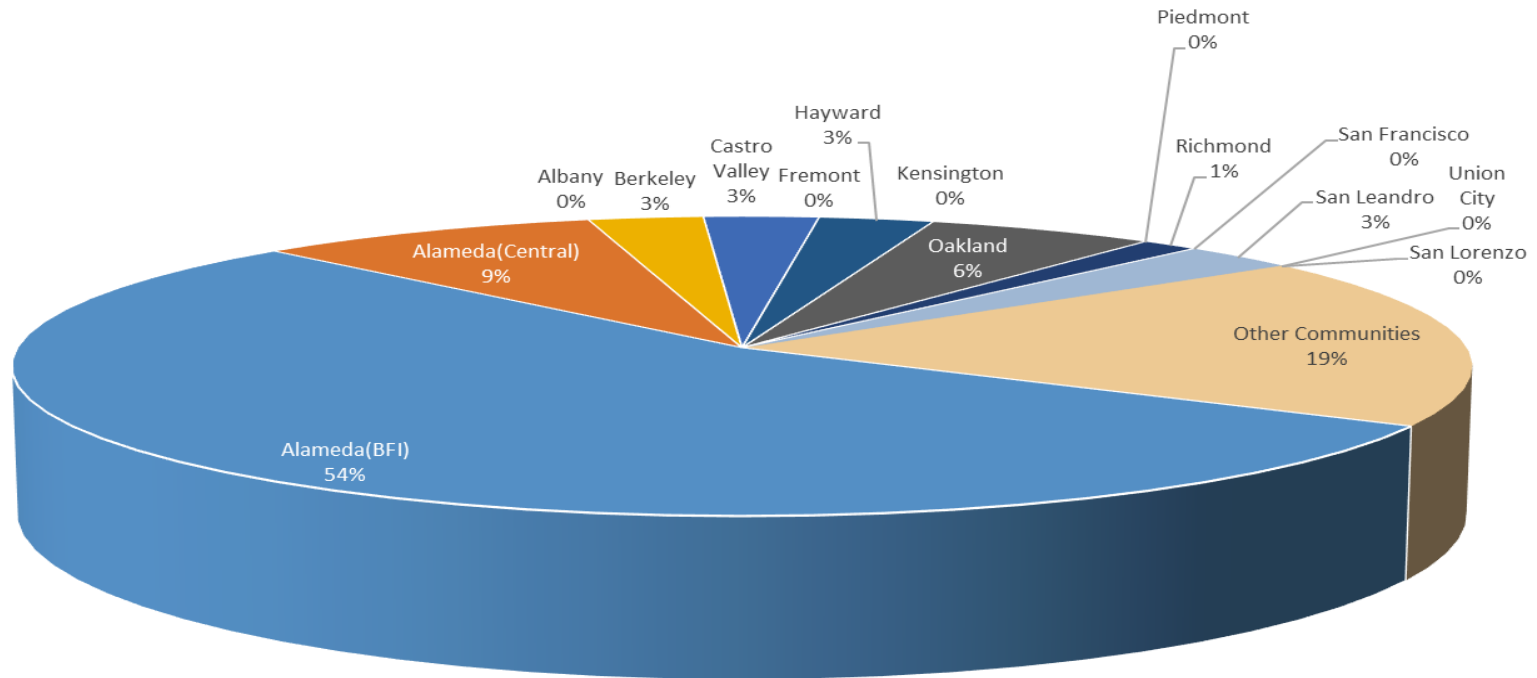
Oakland Airport (OAK)
Noise Complaint Summary
April 2025

Community	Callers	Complaints
Alameda(BFI)	38	519
Alameda(Central)	6	20
Albany	0	0
Berkeley	2	110
Castro Valley	2	54
Fremont	0	0
Hayw ard	2	2
Kensington	0	0
Oakland	4	2138
Piedmont	0	0
Richmond	1	76
San Francisco	0	0
San Leandro	2	6
Union City	0	0
San Lorenzo	0	0
Other Communities	13	101
Total	70	3026
Complaints by Type		
E-mail	2204	
View point App	822	
Complaints by Time of Day		
Day (0700 - 1900)	316	
Evening (1900 - 2200)	391	
Night (2200 - 0700)	2319	
Complaints by Type of Operation		
Arrivals	2085	
Departures	773	
Over-flights	37	
Touch & Go	131	
Not Linked to an Operation	0	
Complaints by Type of Aircraft		
Business Jet	143	
Helicopter	7	
Jet	2614	
Military	0	
Not Reported (not linked to an aircraft)	0	
Other (Type information not available)	11	
Propeller	219	
Turbo-prop	32	

Number of Callers

April 2025

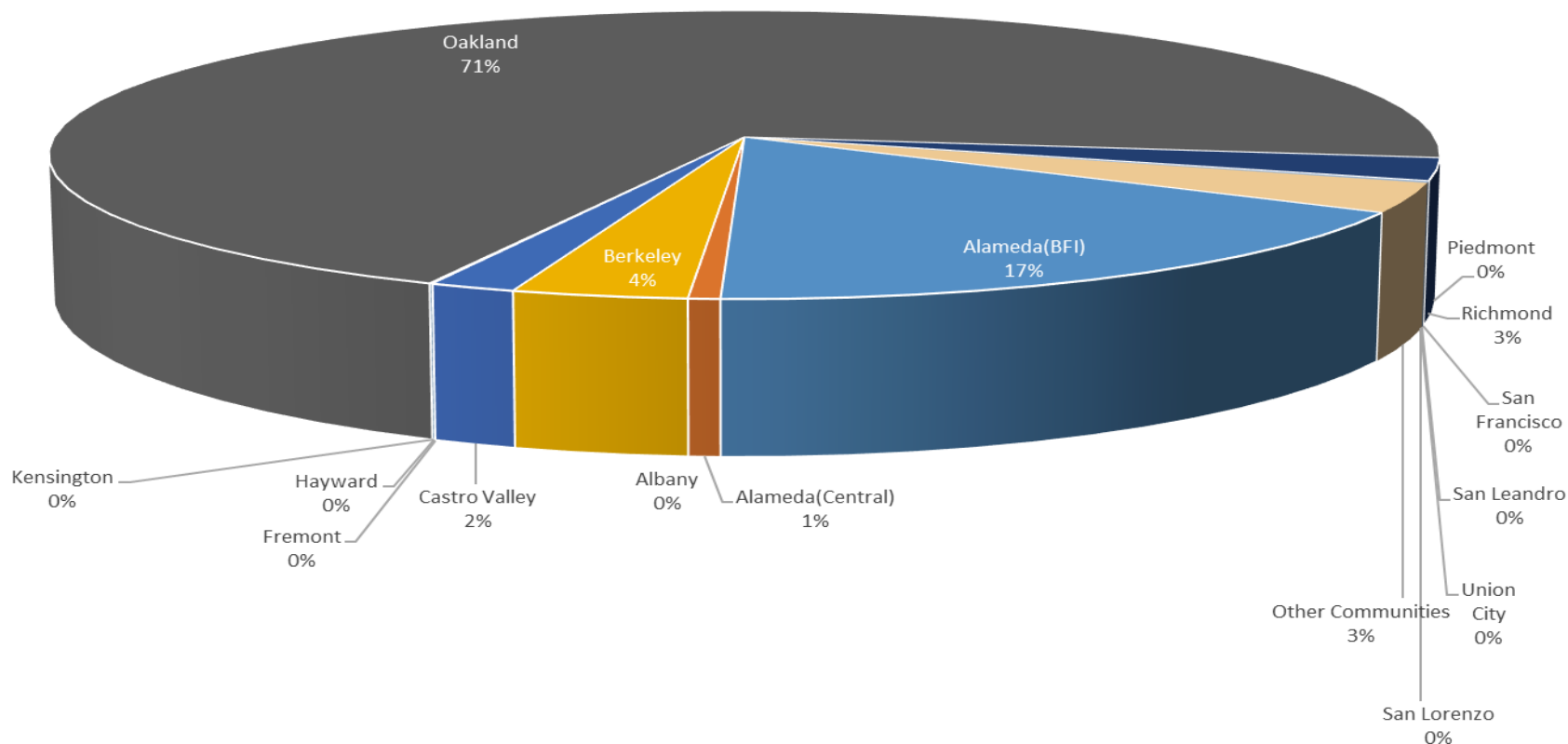
Noise Complaints Summary by Number of Callers



Number of Complaints

April 2025

Noise Complaints Summary by Number of Complaints



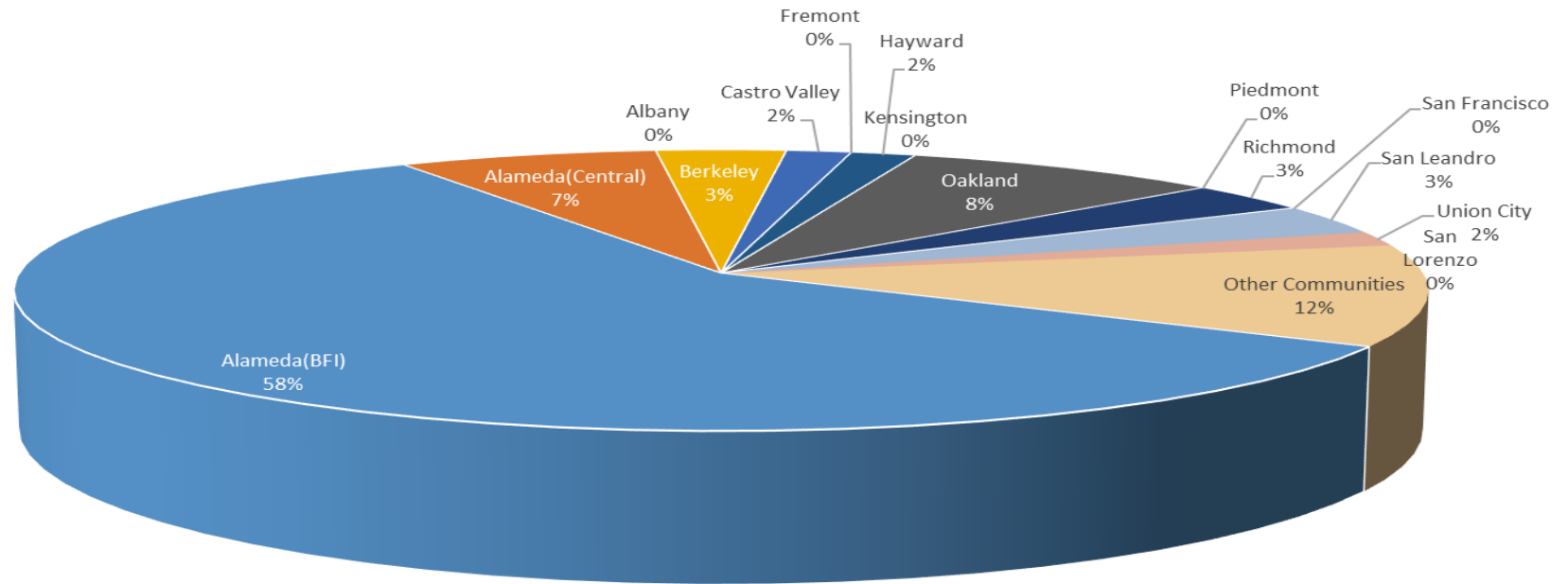
Oakland Airport (OAK)
Noise Complaint Summary
May 2025

Community	Callers	Complaints
Alameda(BFI)	35	595
Alameda(Central)	4	10
Albany	0	0
Berkeley	2	408
Castro Valley	1	84
Fremont	0	0
Hayw ard	1	1
Kensington	0	0
Oakland	5	2431
Piedmont	0	0
Richmond	2	179
San Francisco	0	0
San Leandro	2	3
Union City	1	14
San Lorenzo	0	0
Other Communities	7	128
Total	60	3853
Complaints by Type		
E-mail	2651	
View point App	1202	
Complaints by Time of Day		
Day (0700 - 1900)	717	
Evening (1900 - 2200)	1127	
Night (2200 - 0700)	2009	
Complaints by Type of Operation		
Arrivals	2239	
Departures	1137	
Over-flights	242	
Touch & Go	235	
Not Linked to an Operation	0	
Complaints by Type of Aircraft		
Business Jet	148	
Helicopter	146	
Jet	2913	
Military	0	
Not Reported (not linked to an aircraft)	0	
Other (Type information not available)	47	
Propeller	526	
Turbo-prop	73	

Number of Callers

May 2025

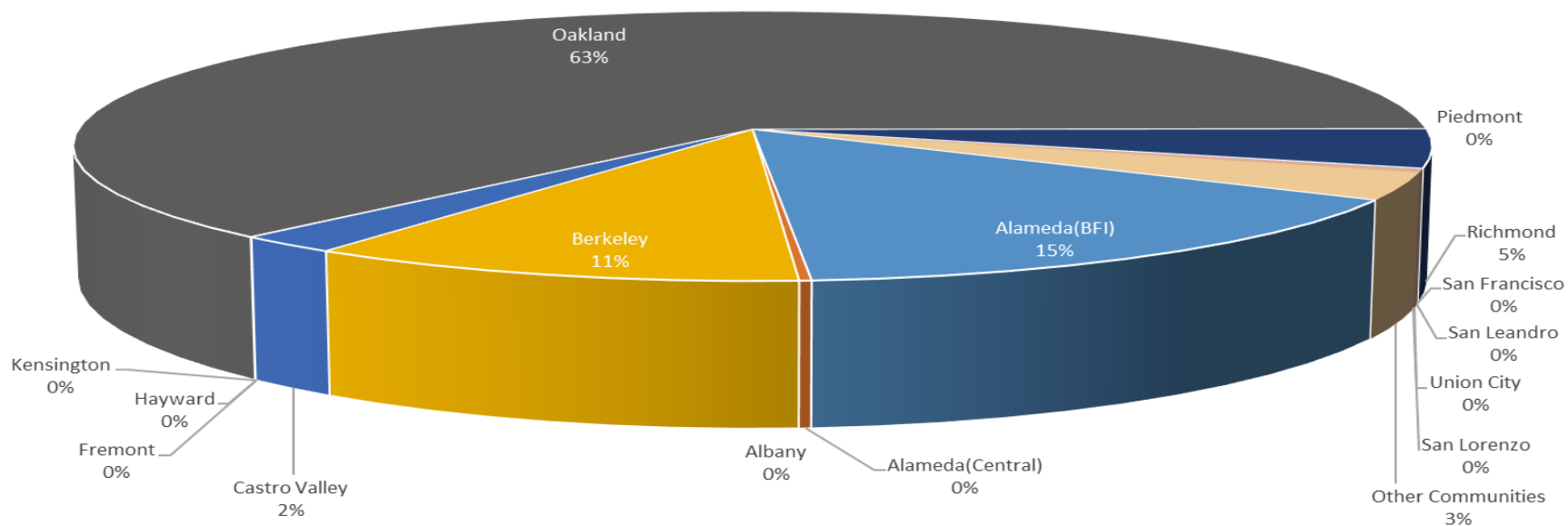
Noise Complaints Summary by Number of Callers



Number of Complaints

May 2025

Noise Complaints Summary by Number of Complaints



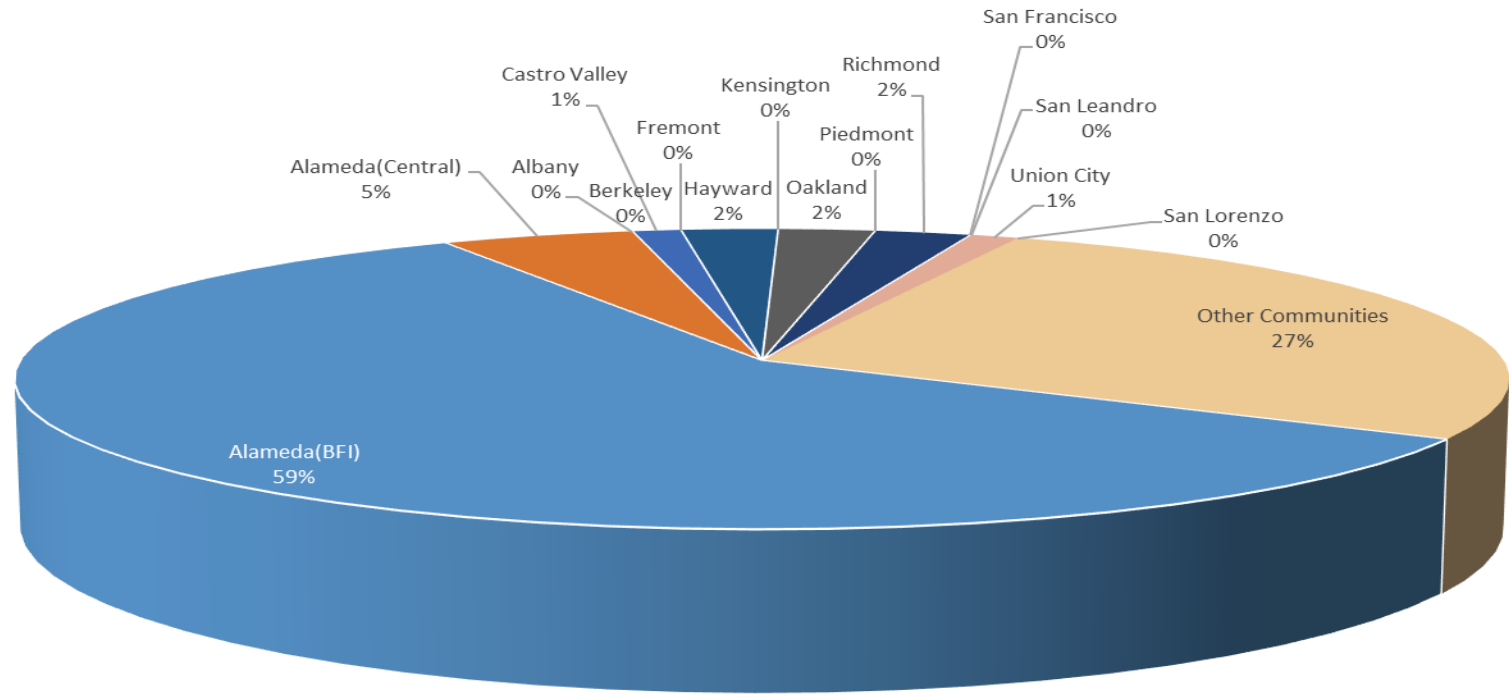
**Oakland Airport (OAK)
Noise Complaint Summary
June 2025**

Community	Callers	Complaints
Alameda(BFI)	50	692
Alameda(Central)	4	25
Albany	0	0
Berkeley	0	0
Castro Valley	1	29
Fremont	0	0
Hayw ard	2	2
Kensington	0	0
Oakland	2	1860
Piedmont	0	0
Richmond	2	36
San Francisco	0	0
San Leandro	0	0
Union City	1	2
San Lorenzo	0	0
Other Communities	23	1337
Total	85	3983
Complaints by Type		
E-mail	1964	
View point App	1996	
Complaints by Time of Day		
Day (0700 - 1900)	1377	
Evening (1900 - 2200)	1234	
Night (2200 - 0700)	1372	
Complaints by Type of Operation		
Arrivals	1988	
Departures	1364	
Over-flights	252	
Touch & Go	379	
Not Linked to an Operation	0	
Complaints by Type of Aircraft		
Business Jet	349	
Helicopter	58	
Jet	2402	
Military	0	
Not Reported (not linked to an aircraft)	0	
Other (Type information not available)	83	
Propeller	826	

Number of Callers

June 2025

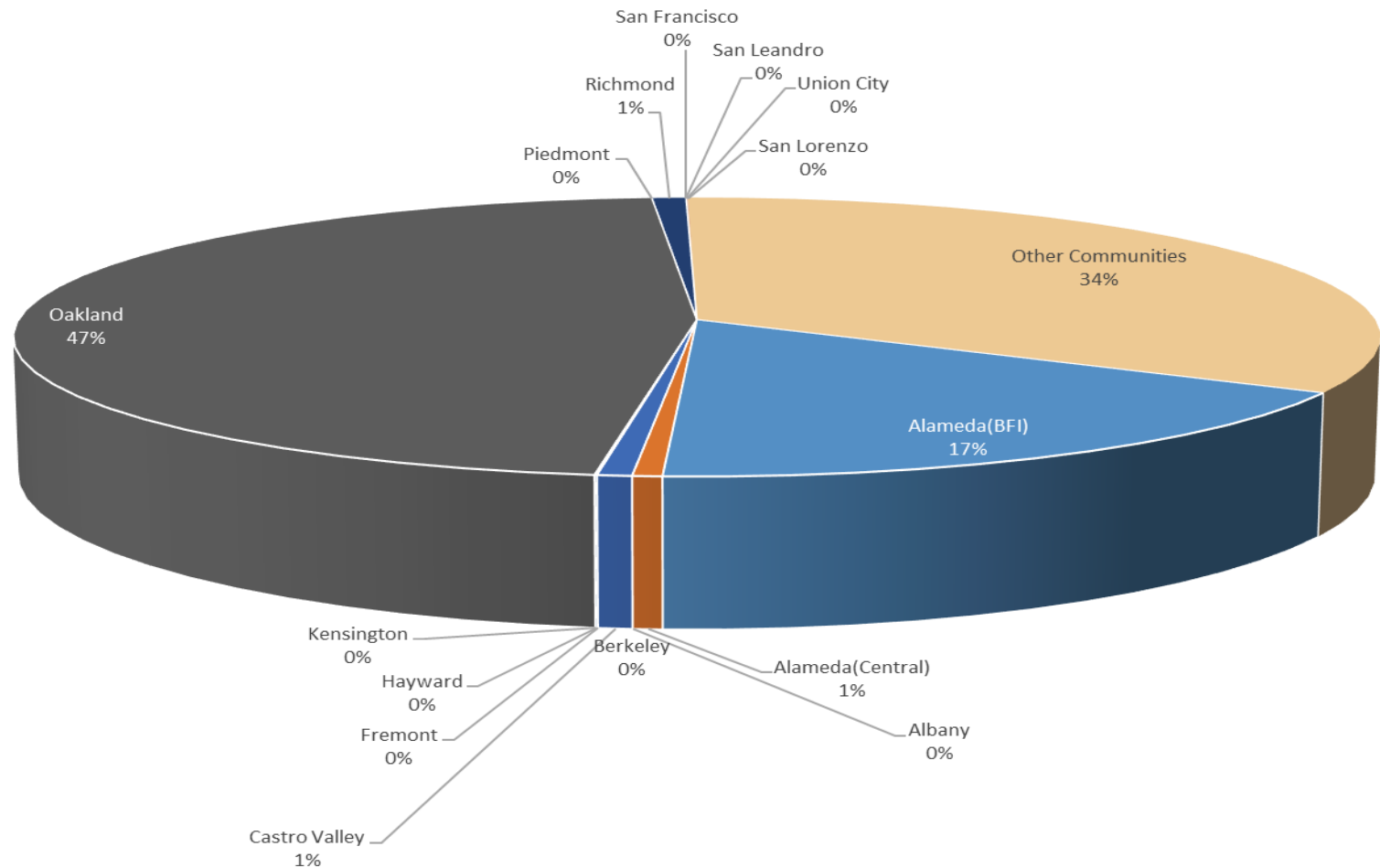
Noise Complaints Summary by Number of Callers

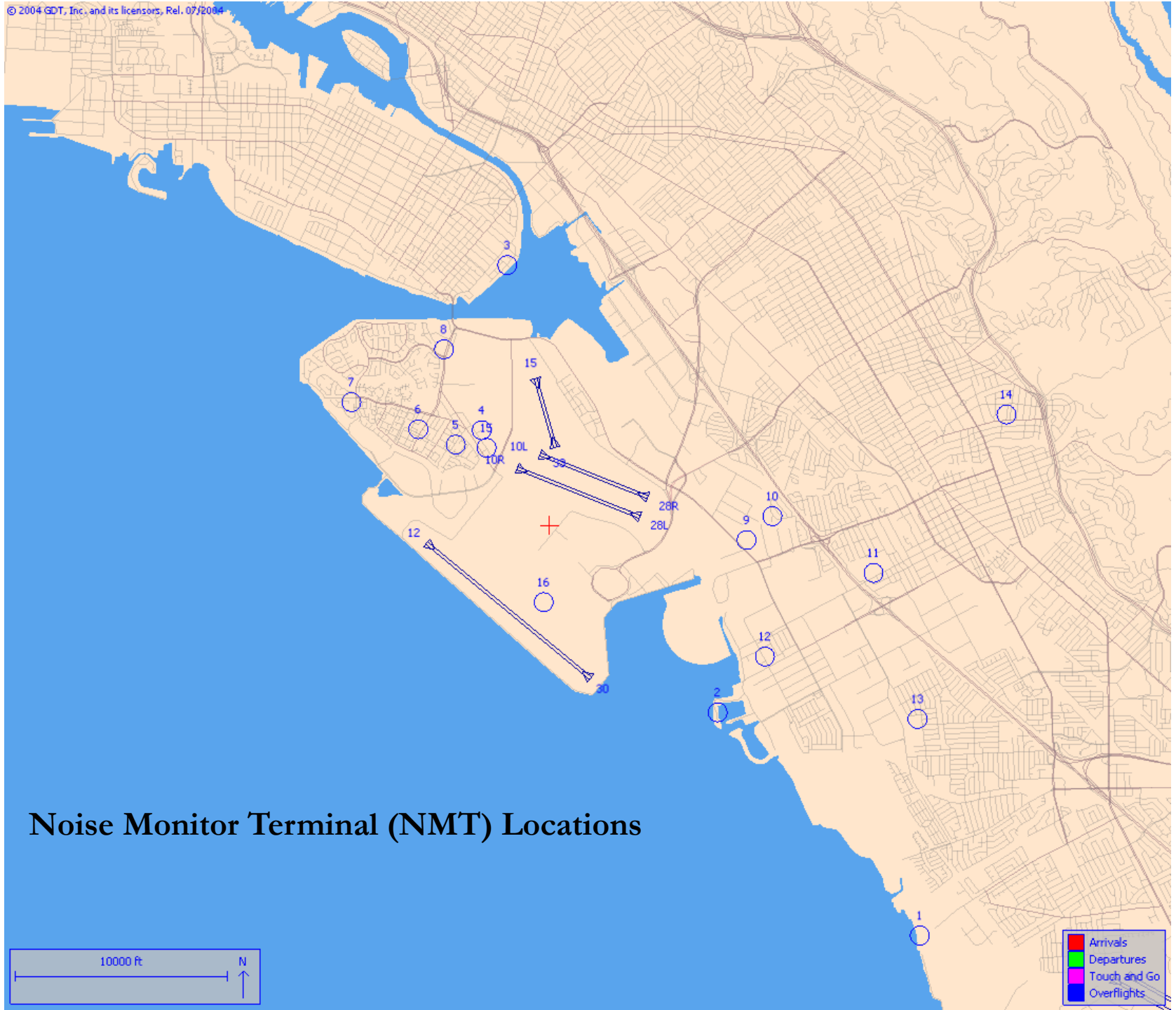


Number of Complaints

June 2025

Noise Complaints Summary by Number of Complaints





Noise Monitor Terminal (NMT) Locations